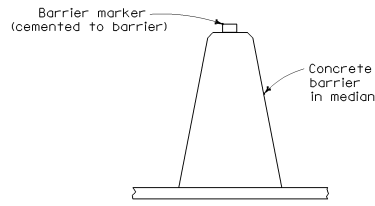




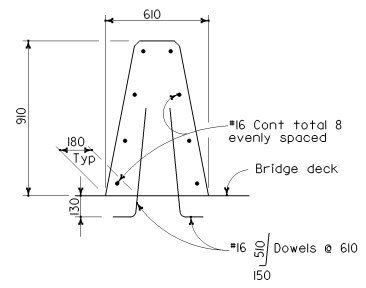
DIST	COUNTY	ROUTE	KILOMETER POST TOTAL PROJECT	SHEET NO.	TOTAL SHEETS

Ellis K. Hirst
 REGISTERED CIVIL ENGINEER
 July 1, 2004
 PLANS APPROVAL DATE
 The State of California or its officers or agents shall not be responsible for the accuracy or completeness of electronic copies of this plan sheet.
 To get to the Caltrans web site, go to: <http://www.dot.ca.gov>

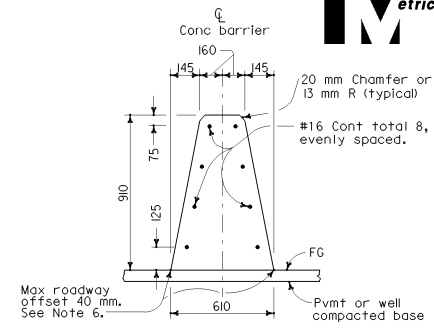
REGISTERED PROFESSIONAL ENGINEER
 Ellis K. Hirst
 No. C17926
 Exp. 6-30-05
 CIVIL
 STATE OF CALIFORNIA



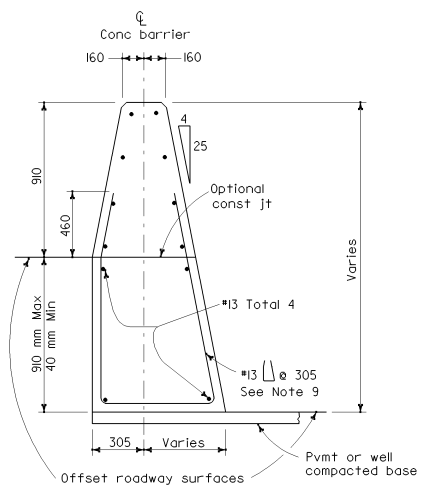
CONCRETE BARRIER TYPE 60 DELINEATION
See Notes 7 and 8



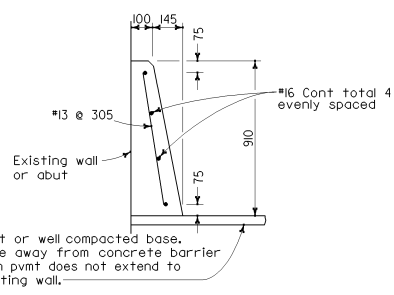
CONCRETE BARRIER TYPE 60A
Details similar to Type 60 except as noted.



CONCRETE BARRIER TYPE 60



CONCRETE BARRIER TYPE 60C
Details similar to Type 60 except as noted. Concrete barrier end anchor when necessary.



CONCRETE BARRIER TYPE 60D

NOTES

- See Standard Plan A76B for details of Concrete Barrier Type 60 end anchors, connection to structures and transitions to Concrete Barrier Type 50 and Concrete Barrier Type 60S.
- See Standard Plan A76C for Concrete Barrier Type 60 transitions at bridge column and sign pedestals.
- Where glare screen is required on Concrete Barrier Type 60, use Concrete Barrier Type 60G.
- Where the concrete barrier is added to the face of existing concrete structure, match existing weep holes.
- Expansion joints in concrete barrier shall be located at all deck, pavement and principal wall joints. Expansion joint filler material shall be the same size as joint or 13 mm minimum.
- Where roadway offset is greater than 40 mm, see Concrete Barrier Type 60C.
- Barrier delineation to be used when required by the Special Provisions.
- Spacing of barrier markers to match spacing of raised pavement markers on the adjacent median edgeline pavement delineation.
- Reinforcing stirrup not required for roadway offsets less than 305 mm.

STATE OF CALIFORNIA
DEPARTMENT OF TRANSPORTATION
CONCRETE BARRIER TYPE 60
NO SCALE
ALL DIMENSIONS ARE IN MILLIMETERS UNLESS OTHERWISE SHOWN
A76A

2004 Std Plan A76A