

D16+	COUNTY	ROUTE	POST MILES TOTAL PROJECT	SHEET TOTAL SHEETS

Florida E. Bautista
 REGISTERED CIVIL ENGINEER

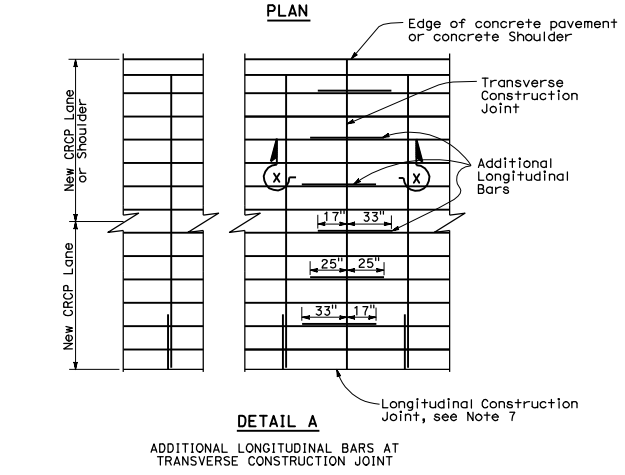
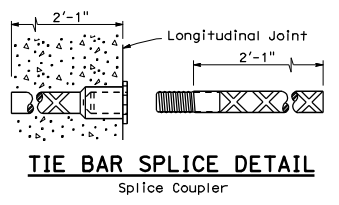
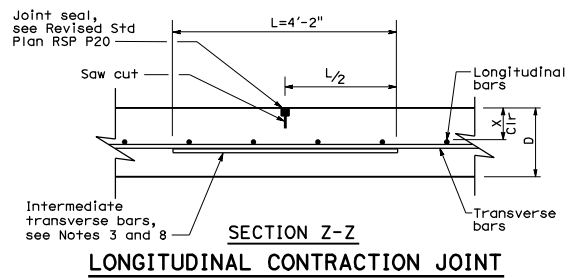
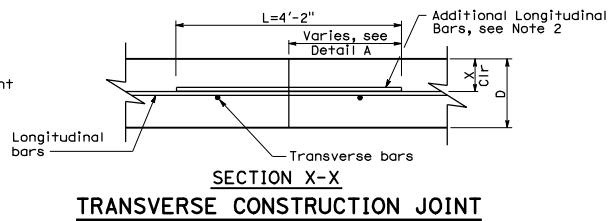
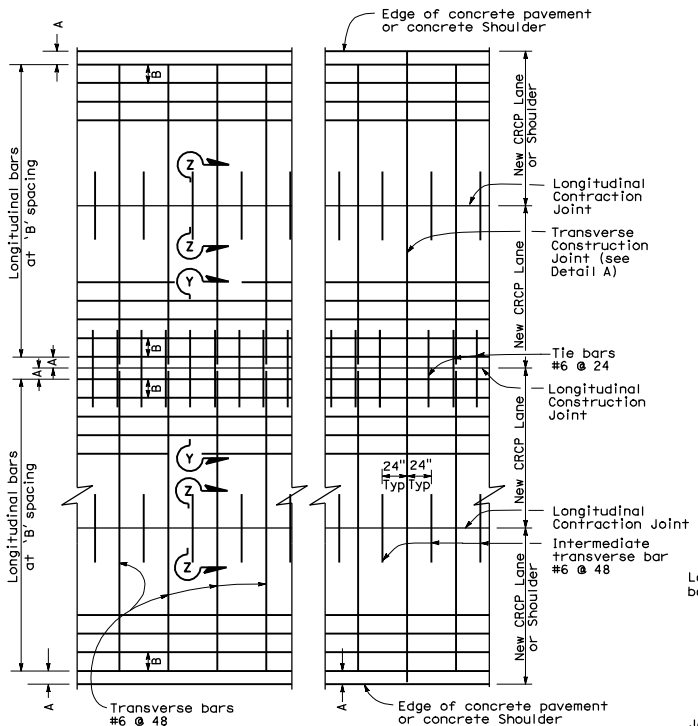
April 20, 2012
 PLANS APPROVAL DATE

The State of California or its officers or agents shall not be responsible for the accuracy or completeness of electronic copies of this plan sheet.

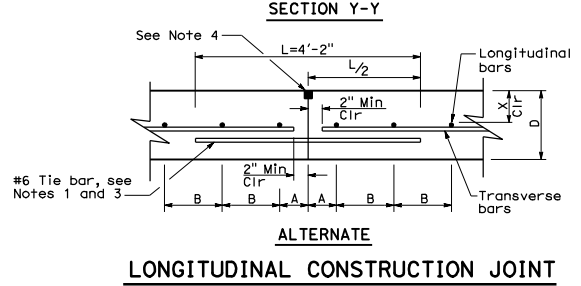
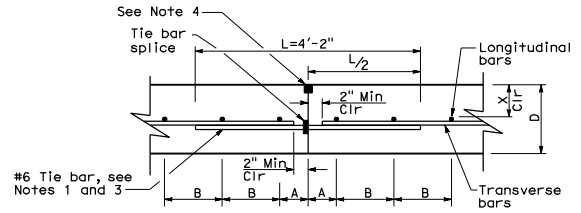
REGISTERED PROFESSIONAL ENGINEER
 Florante E. Bautista
 No. C54859
 Exp. 6-30-12
 CIVIL
 STATE OF CALIFORNIA

TABLE No. 1 LONGITUDINAL BAR REINFORCEMENT

D	SLAB THICKNESS AND BAR SIZE	FIRST SPACING AT EDGE OR JOINT		REGULAR BARS		ADDITIONAL BARS AT TRANSVERSE CONSTRUCTION JOINT		CIR
		SPACING A	SPACING B	SPACING 2 x B	LENGTH L	X		
.80'	#6	3" TO 4"	7.5"	15"	50"	4"		
.85'	#6	3" TO 4"	7.0"	14"	50"	4"		
.90'	#6	3" TO 4"	6.5"	13"	50"	4"		
.95'	#6	3" TO 4"	6.25"	12.5"	50"	4"		
1.00'	#6	3" TO 4"	6.0"	12"	50"	6"		
1.05'	#6	3" TO 4"	5.75"	11.5"	50"	6"		
1.10'	#6	3" TO 4"	5.5"	11"	50"	6"		



- NOTES:**
- Place tie bar in the same plane as transverse bars.
 - Place additional longitudinal bars in the same horizontal plane as the longitudinal bars.
 - Place tie bars and intermediate transverse bars parallel to transverse bars.
 - Joint seals at longitudinal construction joints shall conform to the details shown on Standard Plan P20 for Type C joint.
 - Intermediate transverse bar spacing shall be equal to transverse bar spacing.
 - Reinforcing bar splices shall be a minimum of 25".
 - Additional longitudinal bars symmetrical about longitudinal construction joint.
 - Place intermediate transverse bar in the same plane as transverse bars.



STATE OF CALIFORNIA
 DEPARTMENT OF TRANSPORTATION
**CONTINUOUSLY REINFORCED
 CONCRETE PAVEMENT**
 NO SCALE

RNSP P4 DATED APRIL 20, 2012 SUPERSEDES RNSP P4 DATED JUNE 5, 2009 AND NSP P4 DATED MAY 15, 2009 THAT SUPPLEMENTS THE STANDARD PLANS BOOK DATED MAY 2006.

REVISED NEW STANDARD PLAN RNSP P4

2006 REVISED NEW STANDARD PLAN RNSP P4