

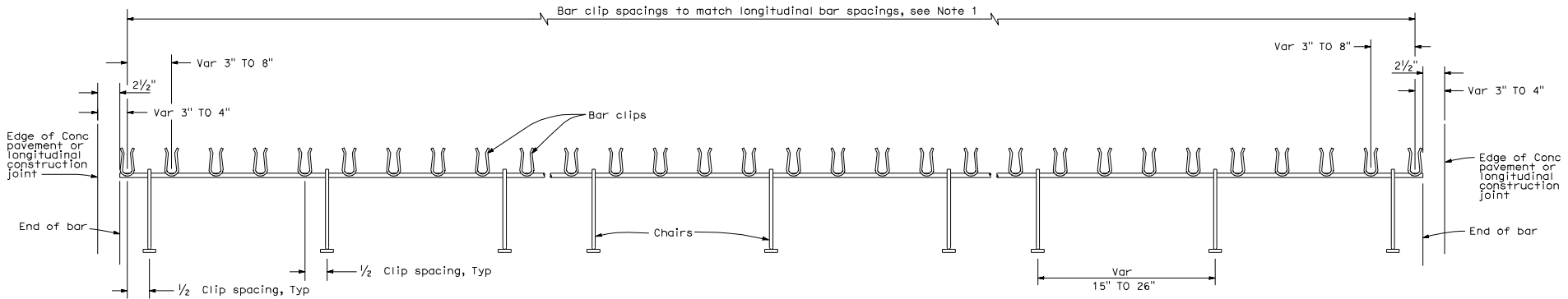
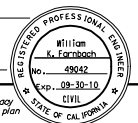
DIST.	COUNTY	ROUTE	POST MILES TOTAL PROJECT	SHEET NO.	TOTAL SHEETS

*William K. Farbach*  
 REGISTERED CIVIL ENGINEER

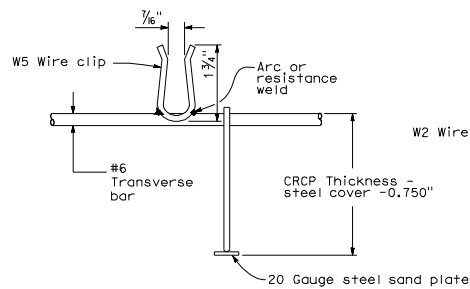
June 5, 2009  
 PLANS APPROVAL DATE

The State of California or its officers or agents shall not be responsible for the accuracy or completeness of electronic copies of this plan sheet.

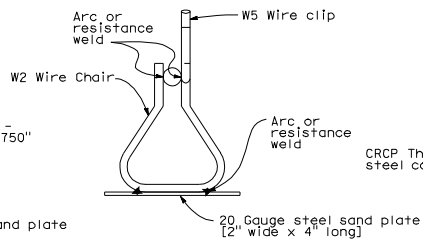
To accompany plans dated \_\_\_\_\_



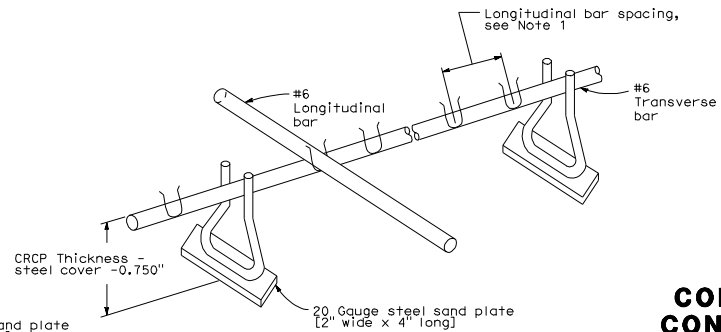
**TRANSVERSE BAR ASSEMBLY**



**#6 BAR CLIP DETAIL**



**CHAIR DETAIL**



**ISOMETRIC VIEW OF CHAIR ASSEMBLY**

**NOTES:**

1. See New Standard Plan NSP P4 for spacing of longitudinal bars.
2. Tensile strength of chair shall be at least 50,000 psi.
3. Wire sizes shown are minimum required.

STATE OF CALIFORNIA  
DEPARTMENT OF TRANSPORTATION

**CONTINUOUSLY REINFORCED  
CONCRETE PAVEMENT-SINGLE  
PIECE TRANSVERSE BAR  
ASSEMBLY**

NO SCALE

NSP P13 DATED JUNE 5, 2009 SUPPLEMENTS THE STANDARD  
PLANS BOOK DATED MAY 2006.

**NEW STANDARD PLAN NSP P13**

2006 NEW STANDARD PLAN NSP P13