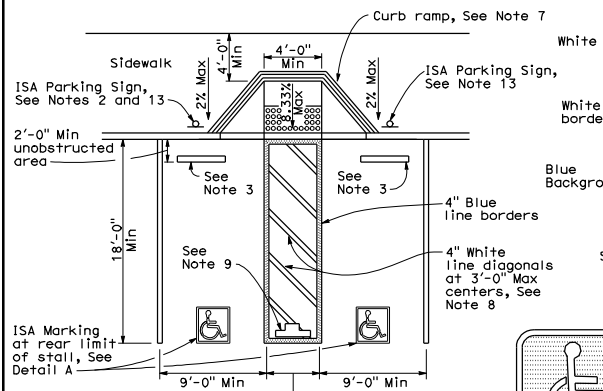


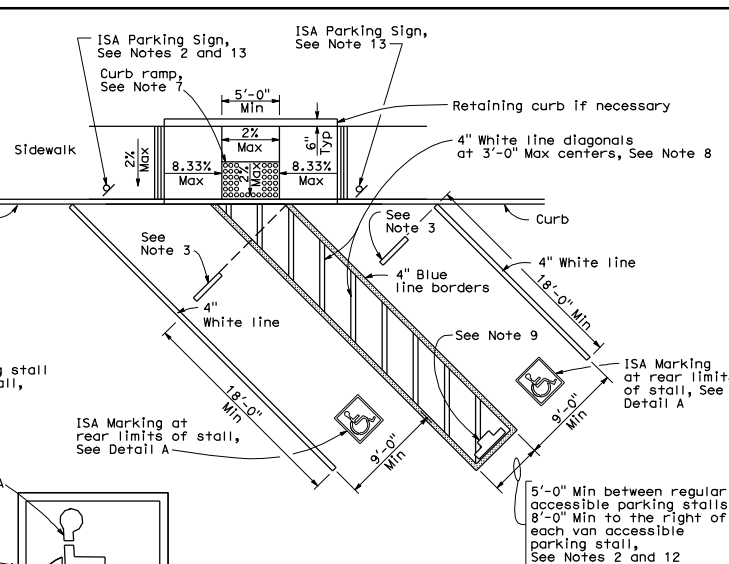
**SINGLE PARKING STALL**



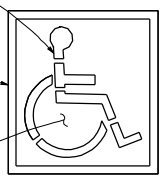
**DOUBLE PARKING STALL**

**TABLE A**

Total Number of Parking Spaces or Stalls	Minimum Number of Disabled Accessible Parking Spaces or Stalls
1-25	1
26-50	2
51-75	3
76-100	4
101-150	5
151-200	6
201-300	7
301-400	8
401-500	9
501-1000	2 percent of total
Greater than 1001	20 plus 1 for each 100 or fraction thereof over 1001



**DIAGONAL DOUBLE PARKING STALLS**



ISA MARKING See Revised Std Plan RSP A24C

**DETAIL A**



SIGN R99 (CA)



PLAQUE R99B (CA)

SIGN R99 (CA) with PLAQUE R99B (CA) See Note 6



SIGN R99C (CA) See Note 6



SIGN R100B (CA) See Note 10



SIGN R7-8b See Notes 2 and 6

**OFF-STREET PARKING SIGNS**

(Parking lot or garage) See Note 6

DIST	COUNTY	ROUTE	POST MILES TOTAL PROJECT	SHEET NO.	TOTAL SHEETS

*H. David Cordova*  
REGISTERED CIVIL ENGINEER  
No. C41957  
Exp. 3-31-10  
CIVIL  
STATE OF CALIFORNIA

June 6, 2008  
PLANS APPROVAL DATE  
The State of California or its officers or agents shall not be responsible for the accuracy or completeness of electronic copies of this plan sheet.

**NOTES:**

1. Accessible parking spaces serving a particular building shall be located on the shortest accessible route of travel from adjacent parking to an accessible entrance. In parking facilities that do not serve a particular building, accessible parking shall be located on the shortest accessible route of travel to an accessible pedestrian entrance of the parking facility.
2. One in every eight accessible off-street parking stalls, but not less than one, shall be served by an accessible aisle of 8'-0" minimum width and shall be signed van accessible. The R7-8b sign shall be mounted below the R99B (CA) plaque or the R99C (CA) sign.
3. In each parking stall, a curb or bumper shall be provided and located to prevent encroachment of vehicles over the required width of walkways. Parking stalls shall be so located that persons with disabilities are not compelled to wheel or walk behind parked cars other than their own.
4. Surface slopes of accessible off-street parking stalls shall be the minimum possible and shall not exceed 2 percent in any direction.
5. Table A shall be used to determine the required number of accessible parking stalls in each parking lot or garage.
6. Where Plaque R99B (CA), Sign R99C (CA) or Sign R7-8b are installed, the bottom of the sign or plaque panel shall be a minimum of 7'-0" above the surrounding surface.
7. Curb ramps shall conform to the details shown on Revised Standard Plan RSP A88A.
8. Blue paint, instead of white may be used for marking accessibility aisles in areas where snow may cause white markings to not be visible.
9. The words "NO PARKING", shall be painted in white letters no less than 1'-0" high and located so that it is visible to traffic enforcement officials. See Revised Standard Plan RSP A90B for details of the "NO PARKING" pavement marking.
10. A R100B (CA) sign shall be posted in a conspicuous place at each entrance to off-street parking facilities or immediately adjacent to and visible from each stall. The sign shall include the address where the towed vehicle may be reclaimed and the telephone number of the local traffic law enforcement agency.
11. Where a single (non-van) accessible parking space is provided, the loading and unloading access aisle shall be on the passenger side of the vehicle as the vehicle is going forward into the parking space.
12. Where a van accessible parking space is provided, the loading and unloading access aisle shall be 8'-0" wide minimum, and shall be on the passenger side of the vehicle as the vehicle is going forward into the parking space.
13. Accessible Parking Only Sign shall be Sign R99C (CA) or Sign R99 (CA) with Plaque R99B (CA).

STATE OF CALIFORNIA  
DEPARTMENT OF TRANSPORTATION  
**ACCESSIBLE PARKING  
OFF-STREET**

NO SCALE  
RSP A90A DATED JUNE 6, 2008 SUPERSEDES STANDARD PLAN A90A  
DATED MAY 1, 2006 - PAGE 117 OF THE STANDARD PLANS BOOK DATED MAY 2006.  
**REVISED STANDARD PLAN RSP A90A**