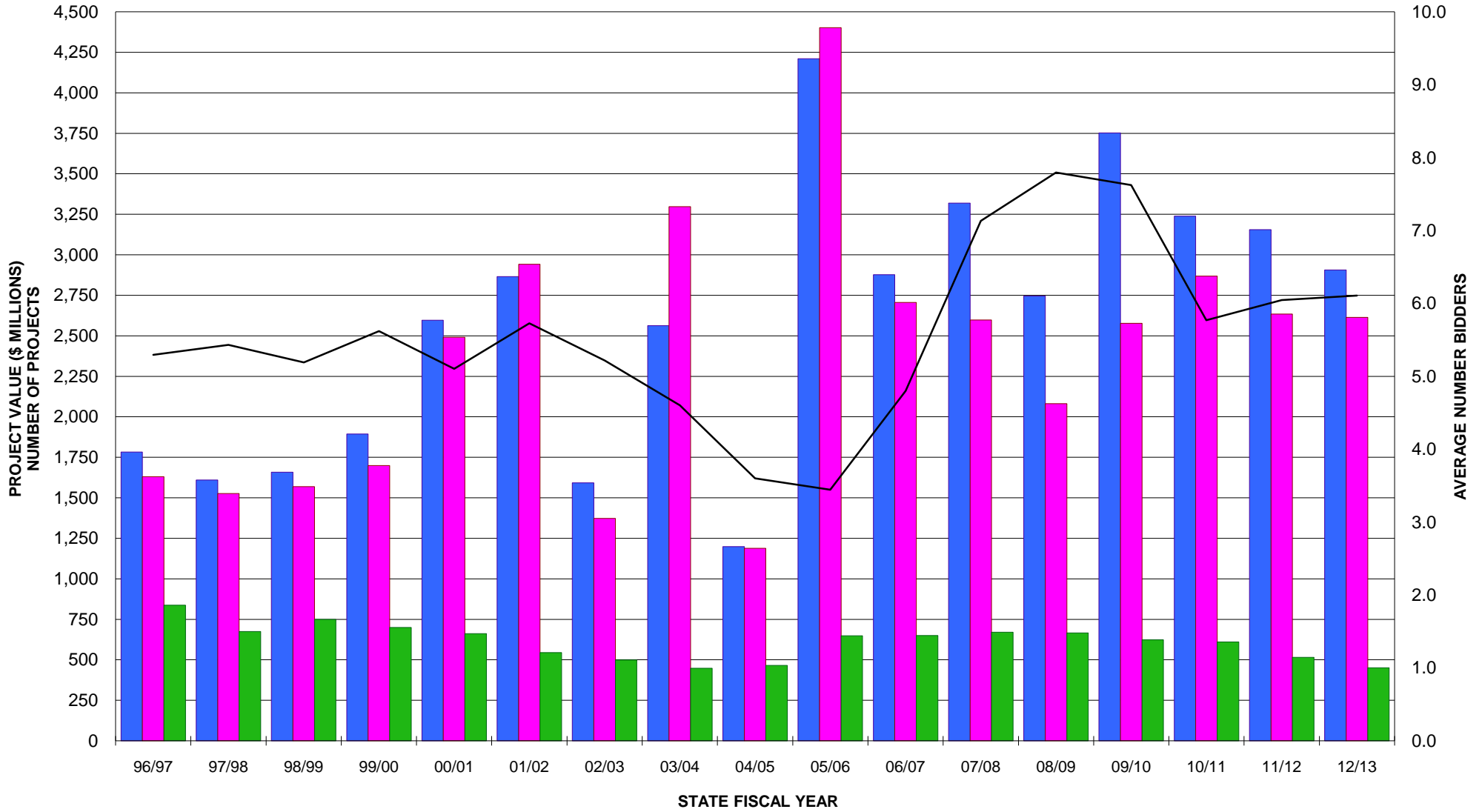
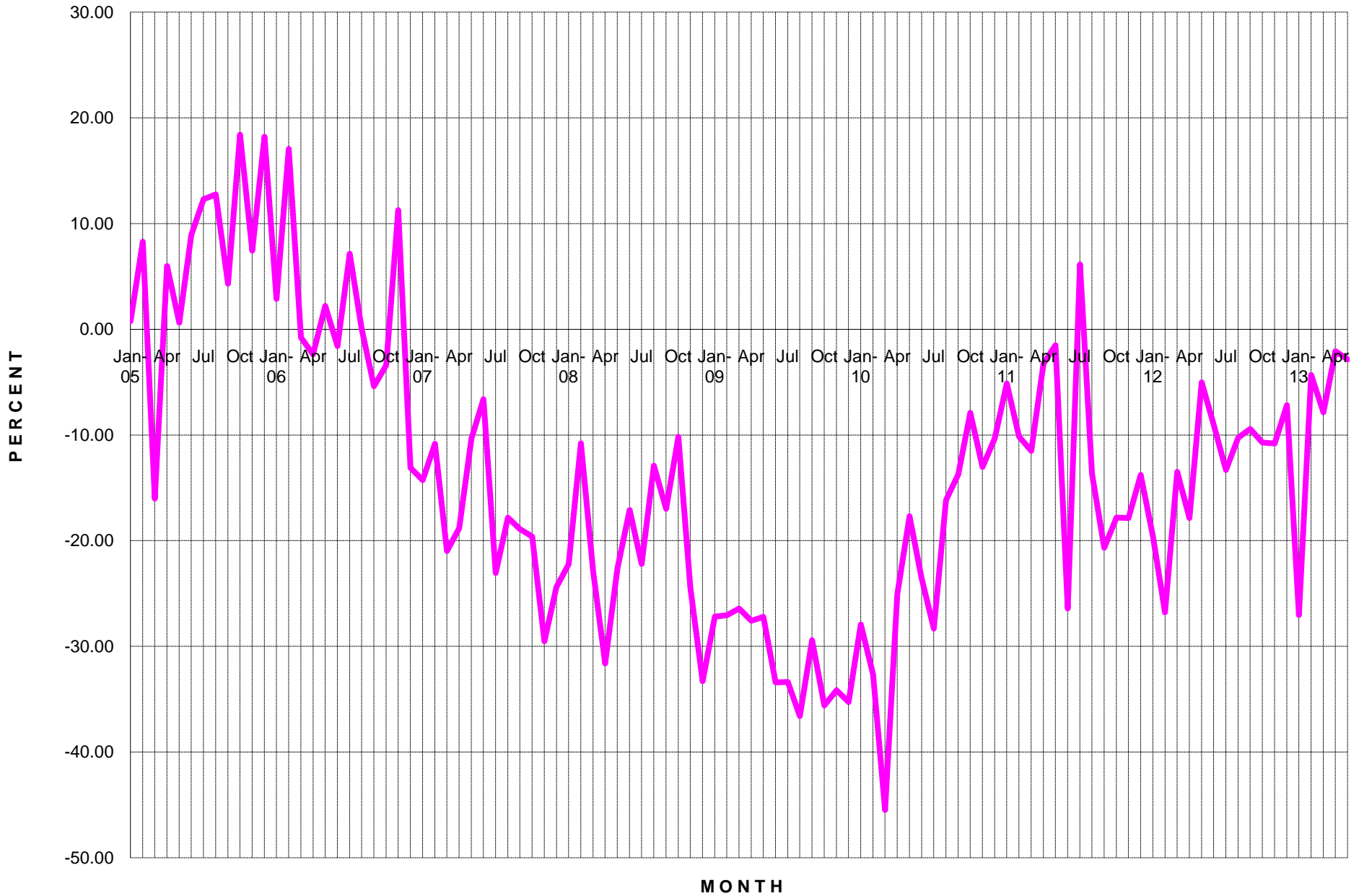


DIVISION OF ENGINEERING SERVICES - EXECUTIVE SUMMARY
LOW BID VS ENGINEER'S ESTIMATE
NUMBER OF PROJECTS & AVERAGE NUMBER OF BIDDERS
96/97 STATE FY THRU 12/13



■ Engineer's Estimate
 ■ Low Bid
 ■ Number of Projects
 — Average Number of Bidders

**DIVISION OF ENGINEERING SERVICES - EXECUTIVE SUMMARY
PERCENTAGE DIFFERENCE BETWEEN LOW BID (Shown in red)
AND ENGINEER'S ESTIMATE
JANUARY 2005 THRU MAY 2013**



DIVISION OF ENGINEERING SERVICES - EXECUTIVE SUMMARY
LOW BID VS ENGINEER'S ESTIMATE
AVERAGE NUMBER OF BIDDERS
JANUARY 2005 THRU MAY 2013

