



Handwritten signature

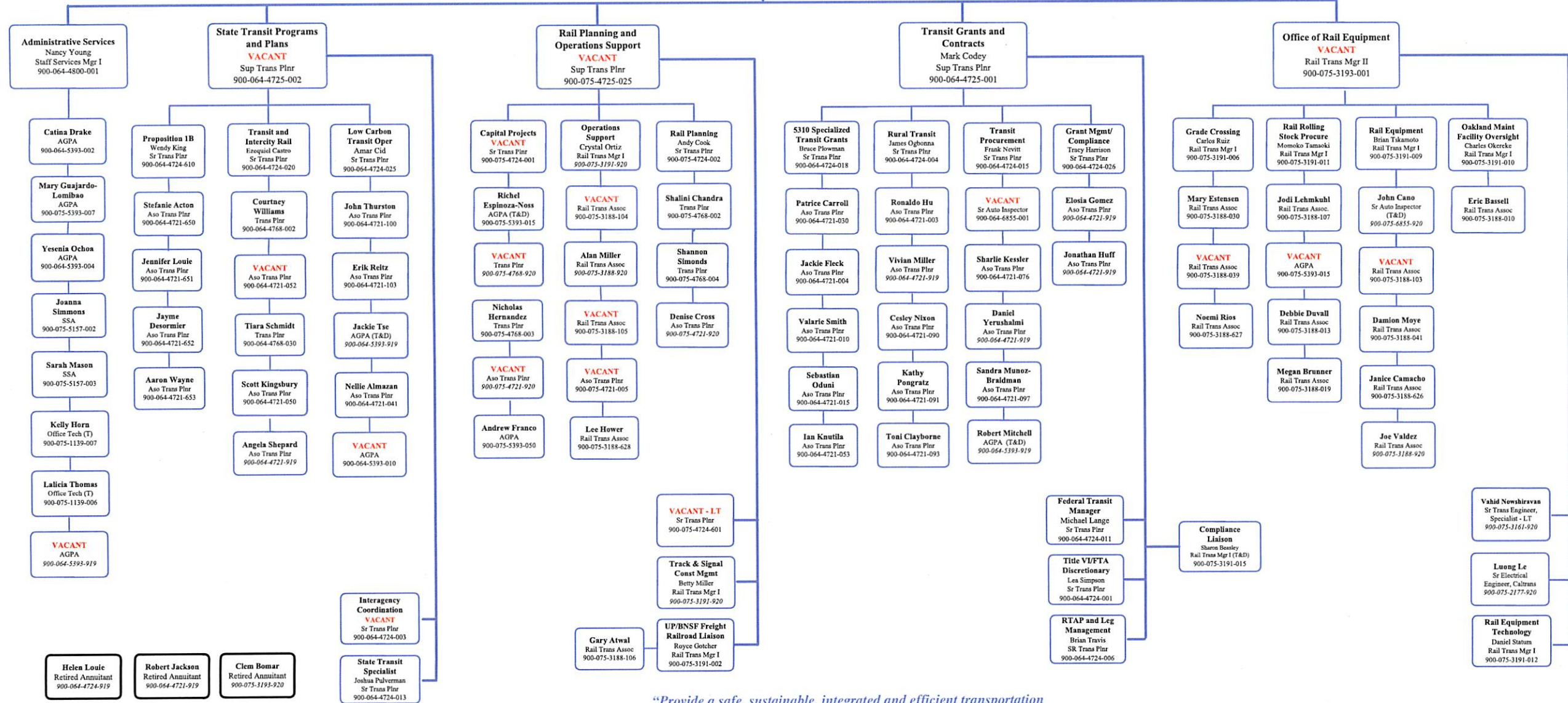
Executive Secretary
Ebony Allen
900-064-1247-001

DIVISION OF RAIL AND MASS TRANSPORTATION
Acting Division Chief
KYLE GRADINGER
CEA (B)
900-075-7500-002

Kyle Gradinger
Principal Transportation Planner
900-075-4723-050

Project Mgmt Engineer
(On Loan to DLA)
Sr Trans Engineer
900-075-3161-001

CURRENT/PROPOSED



"Provide a safe, sustainable, integrated and efficient transportation system to enhance California's economy and livability"