



State Route 29-Troutdale Creek Bridge Replacement Project



The Project

Caltrans will replace the State Route 29 (SR-29) Troutdale Creek Bridge in northwest Napa County with a new bridge and widen the northbound and southbound SR-29 bridge approaches.

What to Expect

The SR-29 Troutdale Creek Bridge will remain open while Caltrans constructs a new Troutdale Creek Bridge. The new bridge will replace the old existing bridge which is necessary because of scouring at its base from the Troutdale Creek. The new bridge will be built in phases at the existing bridge location.

Intermittent Delays

Motorists should expect delays. During one-way traffic controls, one lane of traffic will remain open on the bridge at all times with flaggers alternating northbound and southbound traffic. Regular work hours are Monday-Friday from 8:00 AM until 3:30 PM each day.

Project Schedule

The initial work to clear trees in preparation of the project is scheduled to start the week of January 6, 2015. The main construction work on the new bridge is scheduled to start in Spring 2015 and be completed as early as late 2016. All work is weather permitting. Caltrans will inform the public once detailed bridge construction schedule is determined.

Project Updates

Stationary mounted signs and changeable message signs (CMS) will be strategically placed to provide information regarding scheduled lane closures and detours.

Online Information

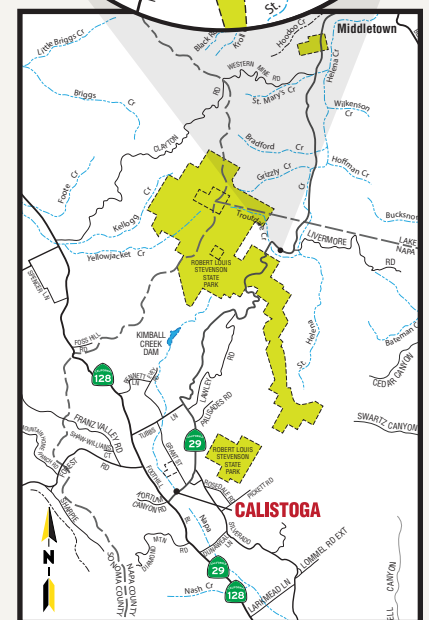
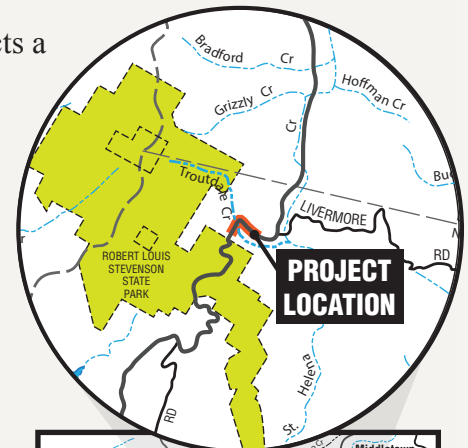
Get the very latest project information on our Caltrans project webpage at: <http://www.dot.ca.gov/dist4/29troutdalecreek/>

Or follow us on Twitter at: <https://twitter.com/CaltransD4>

Make Contact

For more information, you can also call or email:

Vince Jacala, Caltrans Public Information Officer
vince.jacala@dot.ca.gov or 510-286-5206



PRSRT STD
ECRWSS
US POSTAGE
PAID
EDDM RETAIL

Local
Postal Customer



EXISTING STATE ROUTE 29 TROUTDALE CREEK BRIDGE