

**Willits Bypass Draft EIS/EIR
Environmental Atlas**

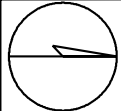
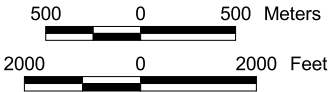
Volume 2 of 2

**01-Men-101
KP R69.4 / 84.2 (PM R43.1 / 52.3)
EA: 01-262000**

**U.S. Department of Transportation
California Department of Transportation**

WILLITS BYPASS EIR / EIS

01-Men-101: KP R69.4/84.2 (PM R43.1/52.3)
EA: 01-262000



Map 1. Project Location

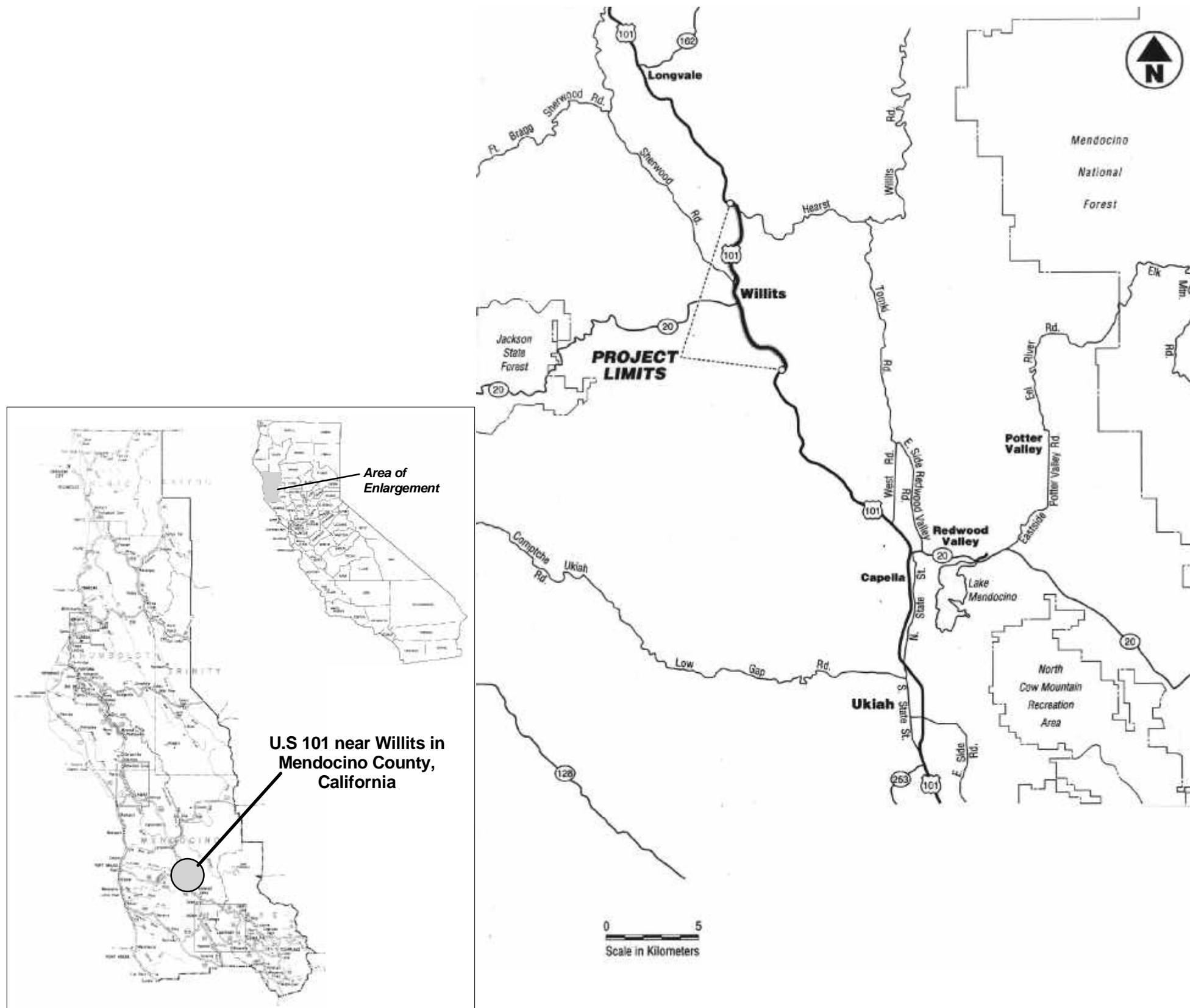
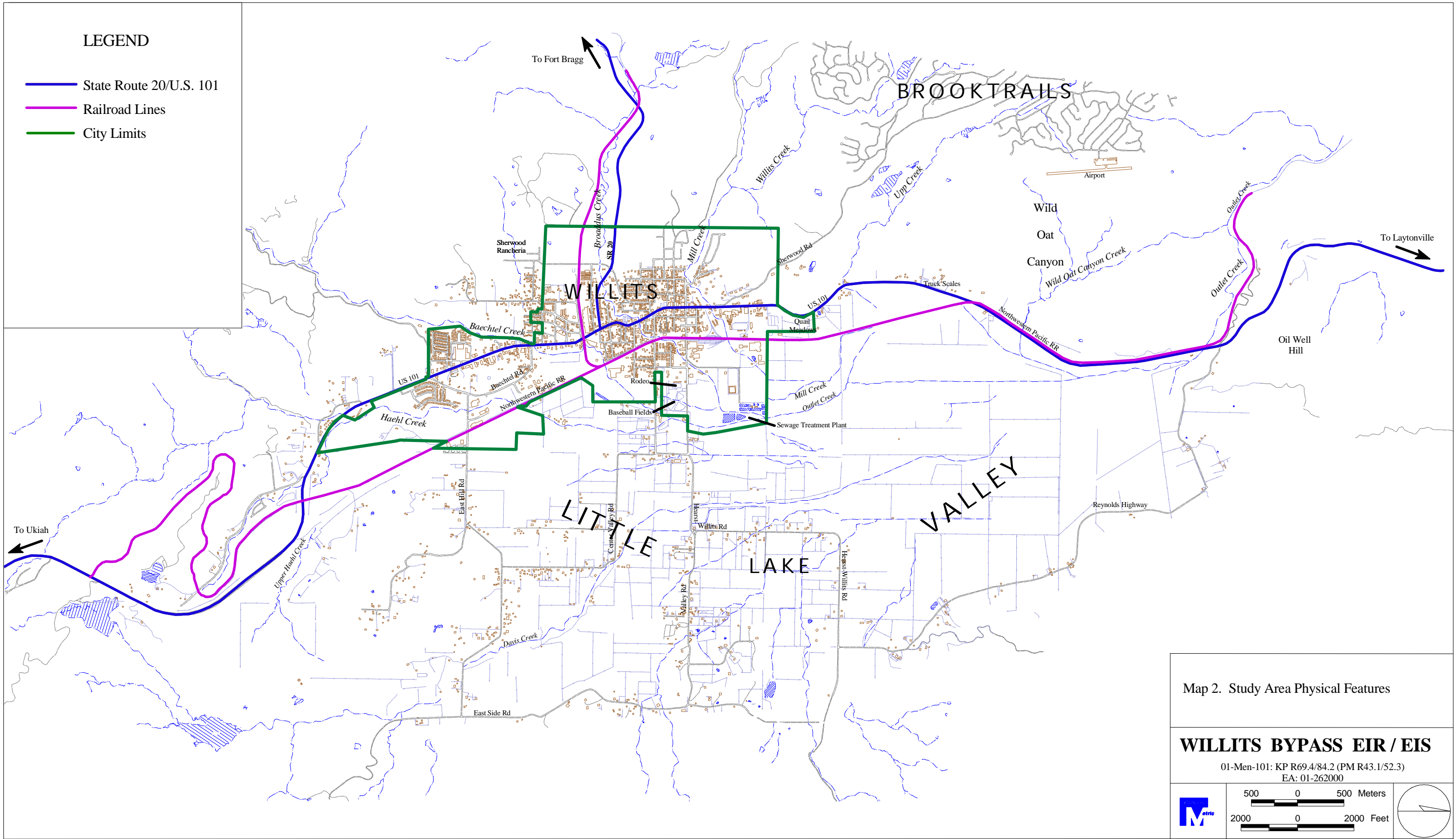


Table of Contents

	Page
Map 1	1
Map 2	2
Map 3	3
Map 4	4
Map 5	5
Map 6	6
Map 7	7
Map 8	8
Map 9	9
Map 10	10
Map 11	11
Map 12	12
Map 13	13
Map 14	14
Map 15	15
Map 16	16
Map 17	17
Map 18	18
Map 19	19
Map 20	20
Map 21	21
Map 22	22
Map 23	23
Map 24	24
Map 24b	25
Map 25a	26
Map 25b	27
Map 25b(2)	28
Map 25c	29
Map 26a	30
Map 26b	31
Map 27a	32
Map 27b	33
Map 27c	34
Map 28a	35
Map 28b	36
Map 28c	37
Map 29	38



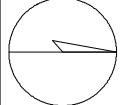
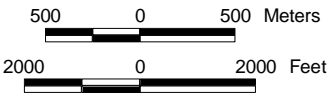
LEGEND

- State Route 20/U.S. 101
- Railroad Lines
- City Limits

Map 2. Study Area Physical Features

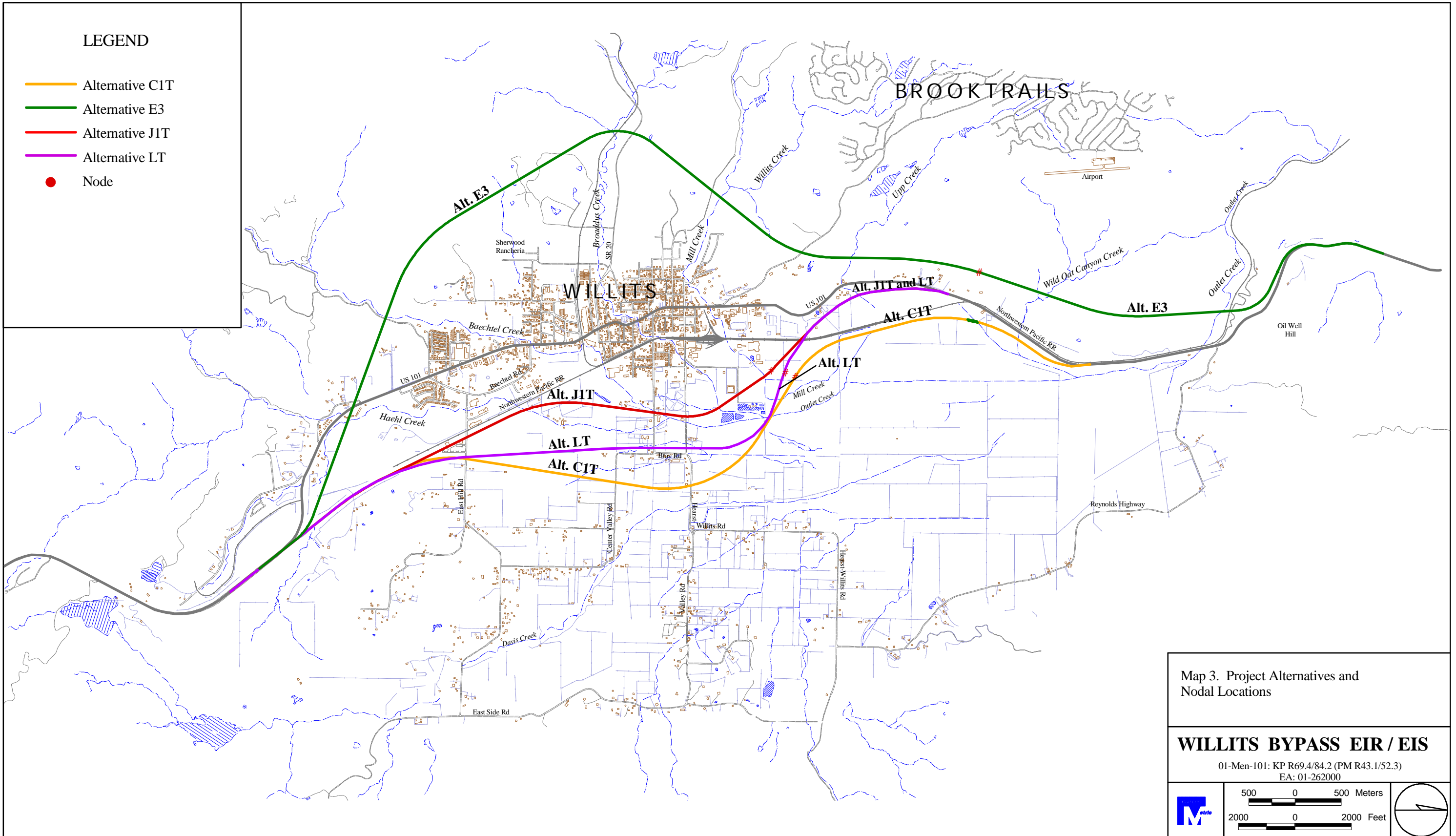
WILLITS BYPASS EIR / EIS

01-Men-101: KP R69.4/84.2 (PM R43.1/52.3)
EA: 01-262000



LEGEND

- Alternative C1T
- Alternative E3
- Alternative JIT
- Alternative LT
- Node

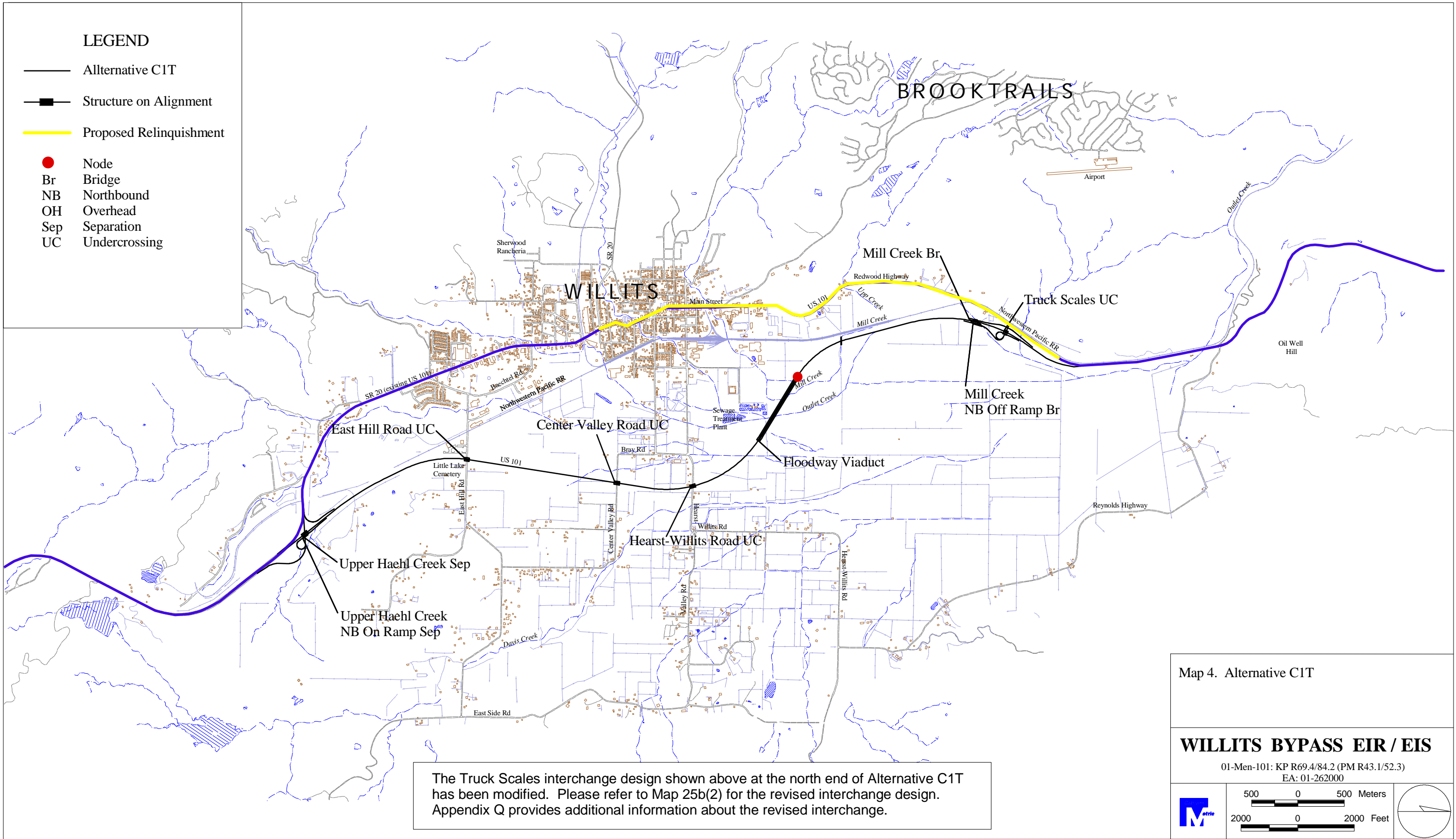


Map 3. Project Alternatives and Nodal Locations

WILLITS BYPASS EIR / EIS

01-Men-101: KP R69.4/84.2 (PM R43.1/52.3)
EA: 01-262000

	500 0 500 Meters	
	2000 0 2000 Feet	



LEGEND

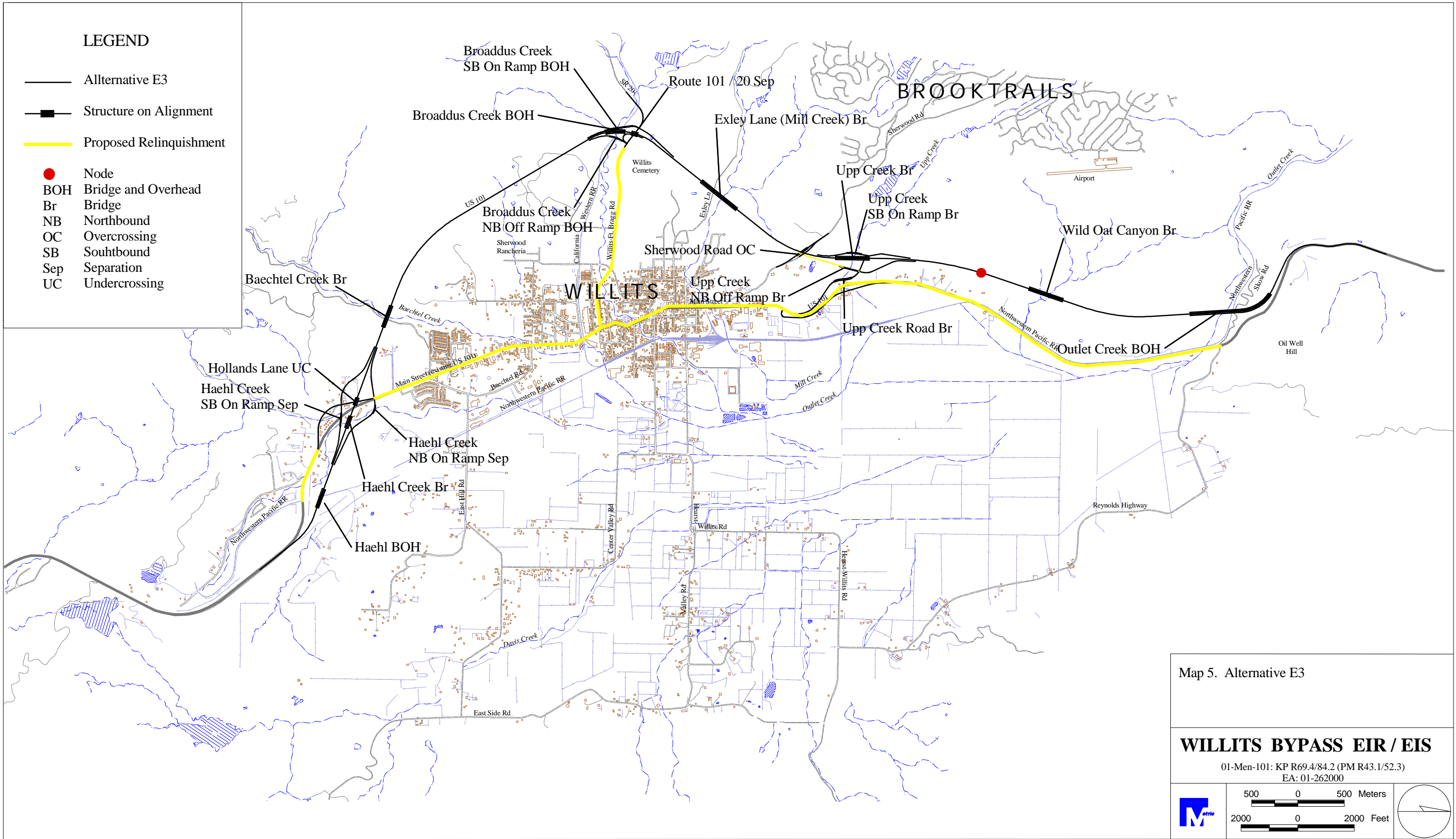
- Alternative C1T
- Structure on Alignment
- Proposed Relinquishment
- Node
- Br Bridge
- NB Northbound
- OH Overhead
- Sep Separation
- UC Undercrossing

The Truck Scales interchange design shown above at the north end of Alternative C1T has been modified. Please refer to Map 25b(2) for the revised interchange design. Appendix Q provides additional information about the revised interchange.

Map 4. Alternative C1T

WILLITS BYPASS EIR / EIS

01-Men-101: KP R69.4/84.2 (PM R43.1/52.3)
EA: 01-262000



LEGEND

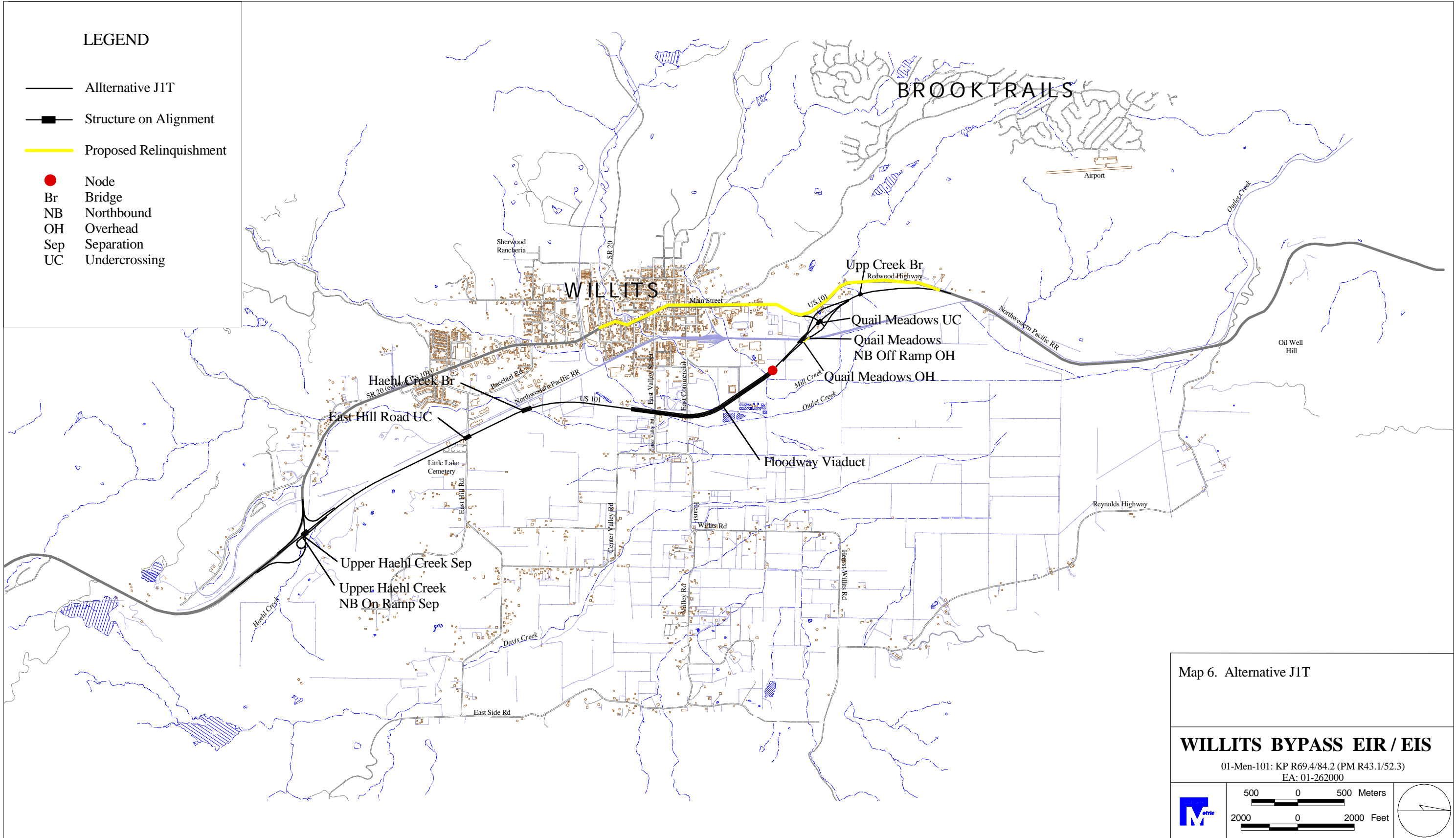
- Alternative E3
- Structure on Alignment
- Proposed Relinquishment
- Node
- BOH Bridge and Overhead
- Br Bridge
- NB Northbound
- OC Overcrossing
- SB Southbound
- Sep Separation
- UC Undercrossing

Map 5. Alternative E3

WILLITS BYPASS EIR / EIS

01-Men-101: KP R69.4/84.2 (PM R43.1/52.3)
EA: 01-262000

	500 0 500 Meters	
	2000 0 2000 Feet	



LEGEND

- Alternative JIT
- Structure on Alignment
- Proposed Relinquishment
- Node
- Br Bridge
- NB Northbound
- OH Overhead
- Sep Separation
- UC Undercrossing

Map 6. Alternative JIT

WILLITS BYPASS EIR / EIS

01-Men-101: KP R69.4/84.2 (PM R43.1/52.3)
EA: 01-262000

	500 0 500 Meters	
	2000 0 2000 Feet	

