

Park and Ride Lots

Free 72 Hour Parking

2,656
Total Spaces

FACILITY OPERATOR
● Caltrans ● OCTA

- 1 Lincoln Park and Ride**
2555 Tustin Ave., Orange · 59 spaces
- 2 Federal SW Regional Lab**
4655 Lampson Ave., Los Alamitos · 66 spaces
- 3 Good Shepard United Methodist Church**
8152 McFadden Ave., Westminster · 42 spaces*
- 4 Mile Square Regional Park**
16400 Brookhurst St., Fountain Valley · 56 spaces
- 5 King of Glory Lutheran Church**
10280 Slater Ave., Fountain Valley · 36 spaces*
- 6 South Coast Plaza**
3333 Bear St., Costa Mesa · 30 spaces
- 7 Jeffrey Rd Park and Ride**
Jeffrey Rd and I-5, Irvine · 593 spaces
- 8 Saddleback Church**
1 Saddleback Pkwy., Lake Forest · 62 spaces
- 9 Light of Christ Lutheran Church**
18182 Culver Dr., Irvine · 90 spaces
- 10 University Park and Ride**
SR 73 and University Dr., Irvine · 40 spaces*
- 11 William S. Craycraft Park**
23682 Alicia Pkwy., Mission Viejo · 38 spaces
- 12 Junipero Serra North/South Park and Ride**
I-5 and Junipero Serra Rd., San Juan Capistrano · 113 spaces

OCTA Lots

Contact Kevin McMichael at (714) 560-5319 for inquiries

- 13 Brea (Lambert) Park and Ride**
SR 57 and Lambert Rd., Brea · 68 spaces
- 14 Fullerton Park & Ride**
3000 W Orangethorpe Ave., Fullerton · 791 spaces
- 15 Goldenwest Transportation Center**
7301 Center St., Huntington Beach · 349 spaces
- 16 Newport Transportation Center**
1550 Avocado Ave., Newport Beach · 76 spaces
- 17 Laguna Hills Transportation Center**
24282 Calle De Los Caballeros, Laguna Hills · 117 spaces

*Permit required. Please contact parkandride.info.d12@dot.ca.gov



What is park and ride?

Park and ride lots are a convenient place for individuals to park and connect with carpools, vanpool, bus, and rail. Park and ride lots take vehicles off local streets and the State Highway System. It encourages transit and carpool usage, which improves the performance of the entire transportation system.



Orange County Park and Ride

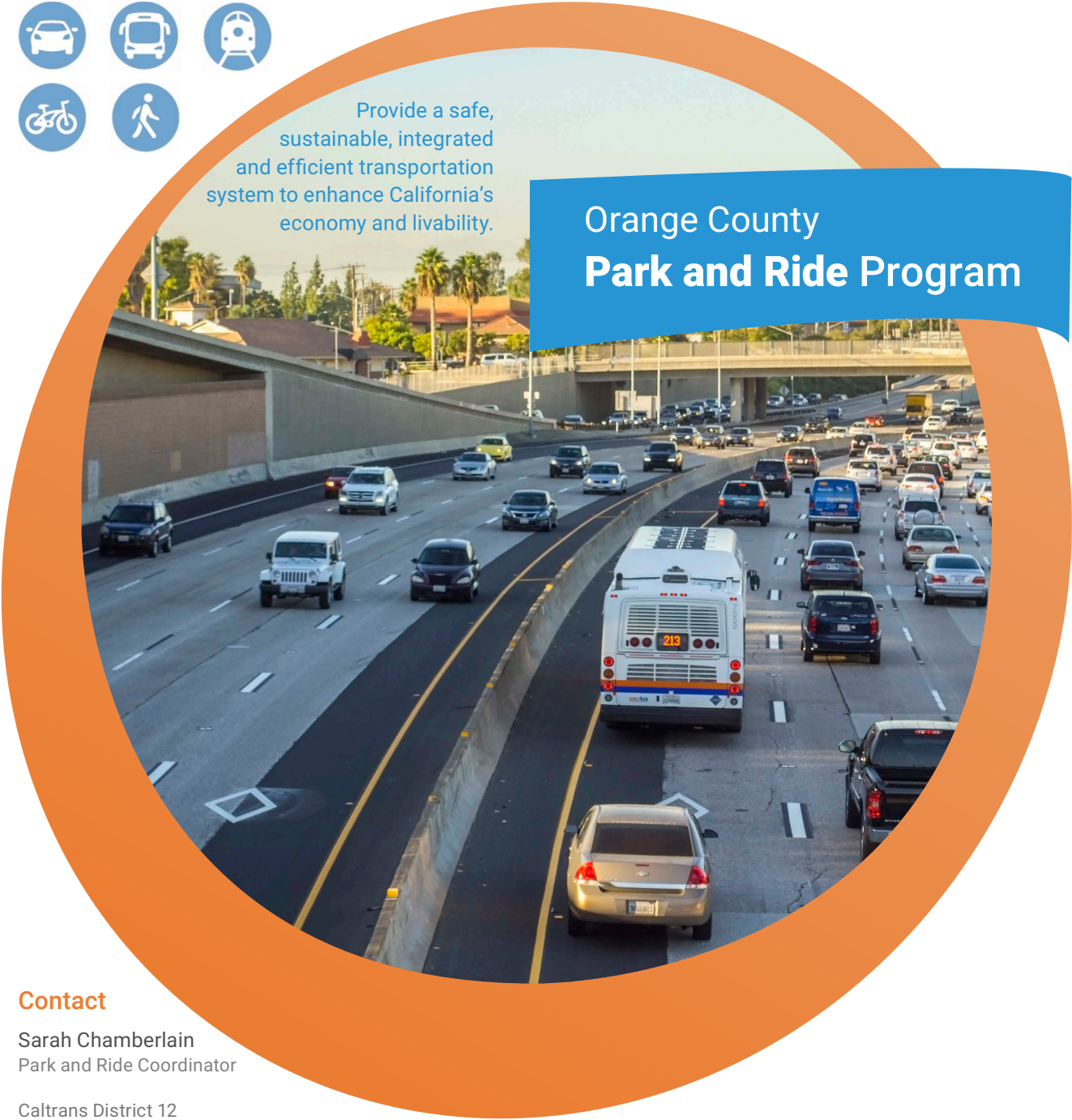
Caltrans District 12 owns and operates park and ride lots strategically located near freeways and rail stations in Orange County. In addition, planning staff work with private land owners, particularly churches and shopping centers near freeways and transit hubs, to dedicate a portion of their parking lots as park and ride facilities during the work week.

Under formal agreements executed and managed by planning staff, the lots are kept paved, striped, and well-lit. Patrons can park **free of charge** for a maximum of **72 hours**.



Provide a safe, sustainable, integrated and efficient transportation system to enhance California's economy and livability.

Orange County Park and Ride Program



Contact

Sarah Chamberlain
Park and Ride Coordinator

Caltrans District 12
1750 E 4th St, Suite 100
Santa Ana, CA 92705

(855) 209-7939
parkandride.info.d12@dot.ca.gov



Caltrans District 12
February 2019

