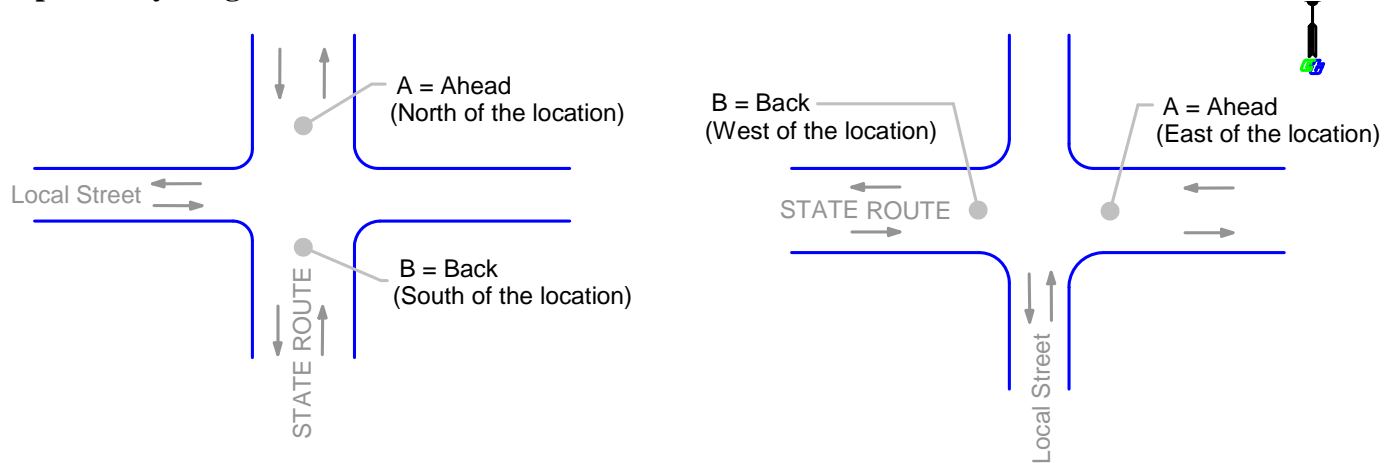


# Explanation of Traffic Counts

## Explanatory Diagram of Traffic Counts



Generally, in California West to East routes are even numbered, while South to North routes are odd numbered. In addition, the postmile values increase from South to North or West to East depending upon the general direction the highway follows within the state, except the following 5 backward routes, Route 71 (North to South), Route 224 (East to West), Route 282 (East to West), Route 580 (East to West), and Route 780 (East to West).