



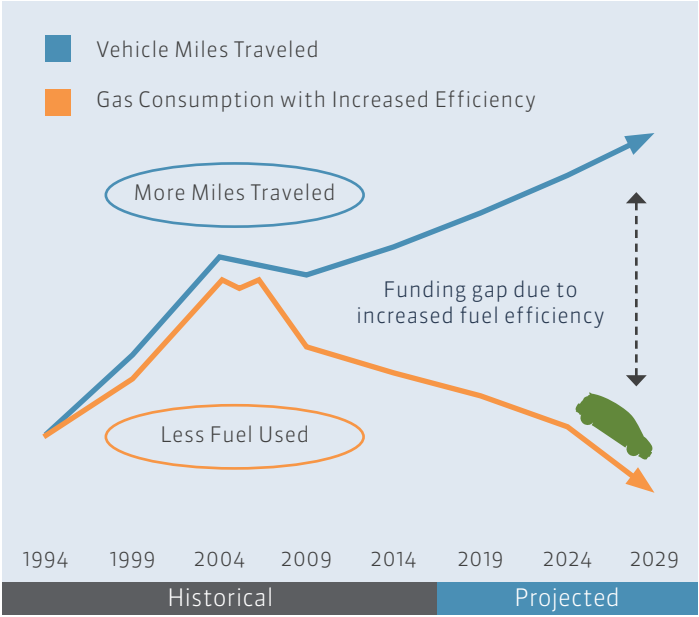
# California Road Charge Pilot Program

## Background

The revenues currently available for highway and local roads are insufficient for preserving and maintaining road infrastructure. While the fuel efficiency of the fleet is increasing, the funding available for our transportation infrastructure is on a steady decline. In an effort to find a funding solution, the State of California set forth on the journey to examine a new transportation funding model—road charge. In 2014, the

Legislature called for a pilot program to study a road charge model as an alternative to the gas tax. The nine-month pilot began in July 2016, with over 5,000 participating vehicles statewide. The California State Transportation Agency (CalSTA) will report findings in July 2017. The California Transportation Commission (CTC) will make recommendations to the Legislature in December.

## FUEL EFFICIENCY REVENUE LOSS



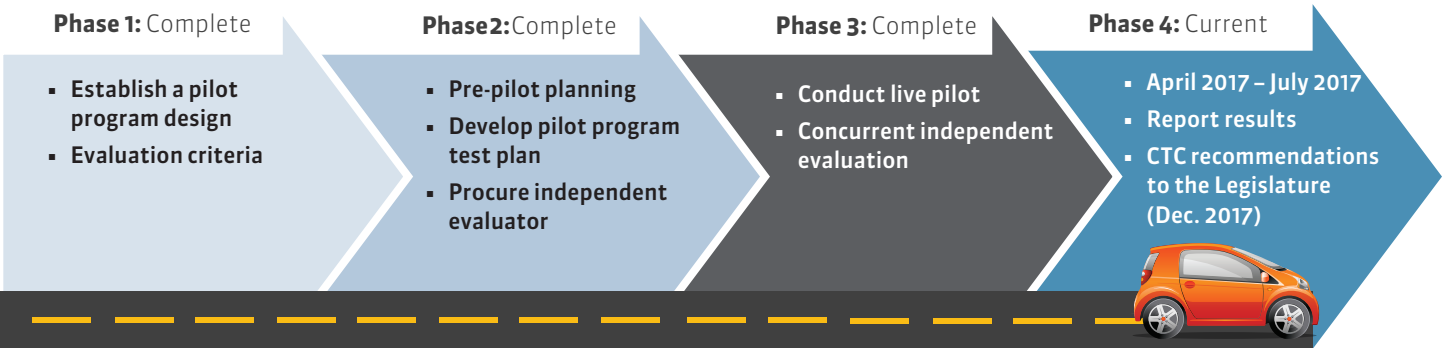
## SENATE BILL 1077 HIGHLIGHTS

- Gather Public Input
- Address Privacy & Data Security
- Provide at Least One Non-Technological Reporting Method Option
- Implement Pilot by January 2017 (Accelerated to July 2016)
- Report Findings
- Make Recommendations

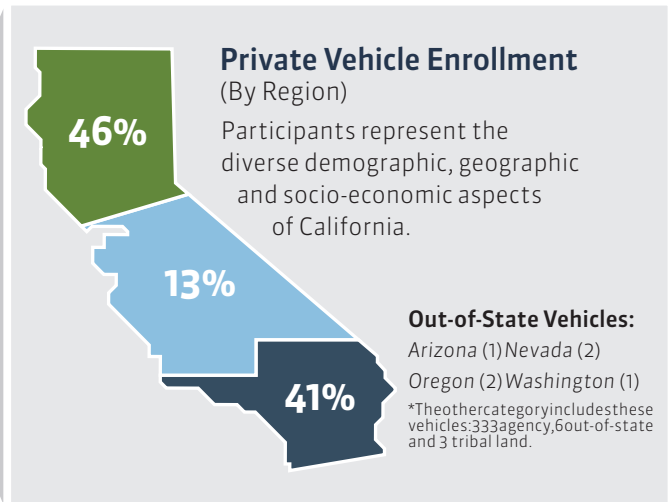
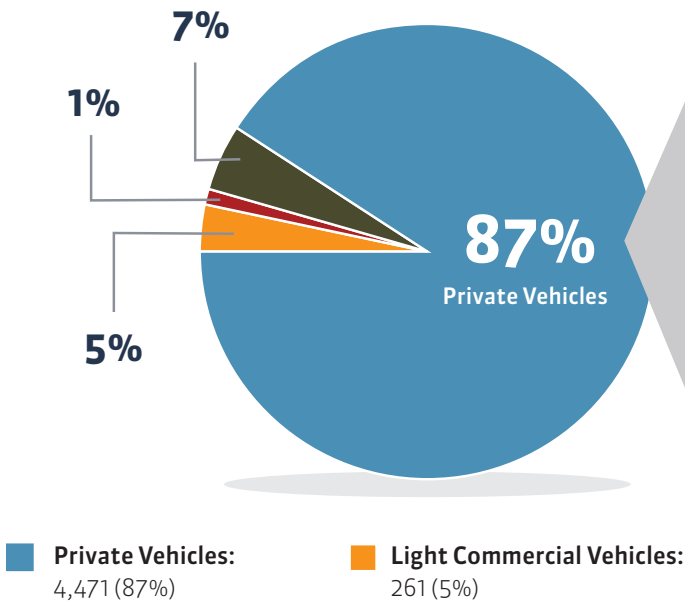
## PILOT OUTLINE

- Include 5,000 Participating Vehicles Statewide
- Represent Diversity in Vehicle Types
- Include Commercial & State Account Managers
- Represent Multiple Mileage Reporting Methods
- Protect Privacy
- Ensure Data Security
- Include an Independent Evaluation

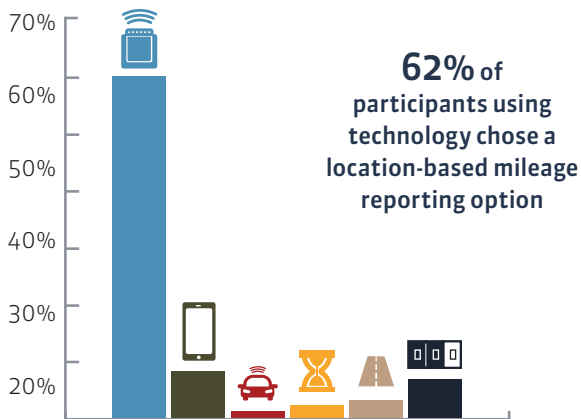
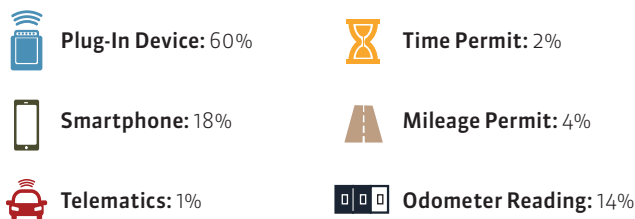
## PROGRAM TIMELINE



## WHO IS TAKING PART?



## MILEAGE REPORTING METHODS



Note: The heavy vehicle mileage meter used by our heavy vehicles represented in the pilot makes up 1% of the total of 5,129 enrolled vehicles.

**80%**

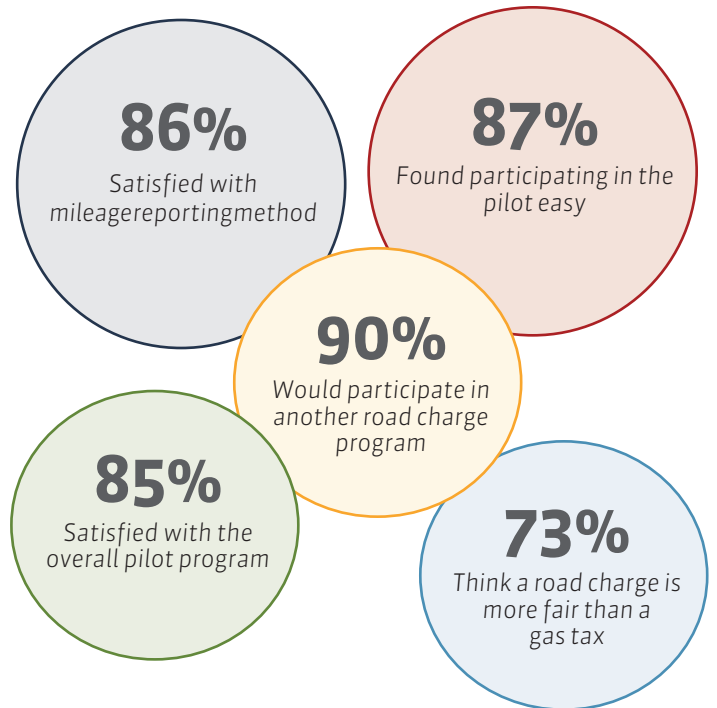
Using an automated reporting method

**20%**

Using a manual reporting method

## PARTICIPANT FEEDBACK

Participant perceptions from the final-pilot survey:



**290**

Toyota Prius is the #1 participating vehicle

**231**

Ford F-150 is the #2 participating vehicle