

STATE OF CALIFORNIA - DEPARTMENT OF TRANSPORTATION
Caltrans TRAFFIC DESIGN

FUNCTIONAL SUPERVISOR
 MOHAMMED QATAMI

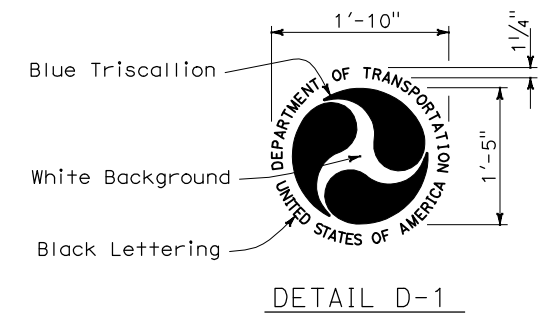
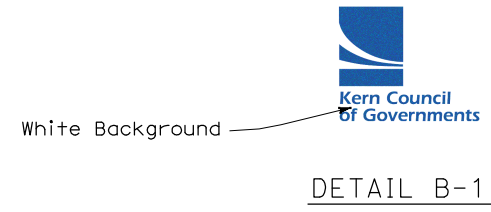
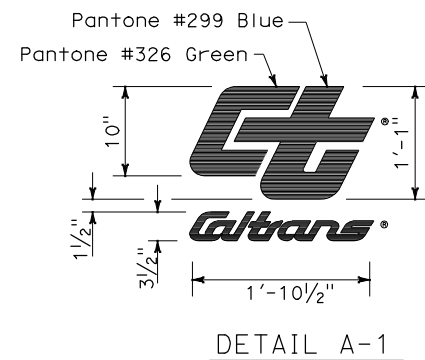
DESIGNED BY
 SANDY LE

CHECKED BY
 HASSAN TAHA

REVISIONS

REVISION NO. DATE REVISION BY DATE REVISOR

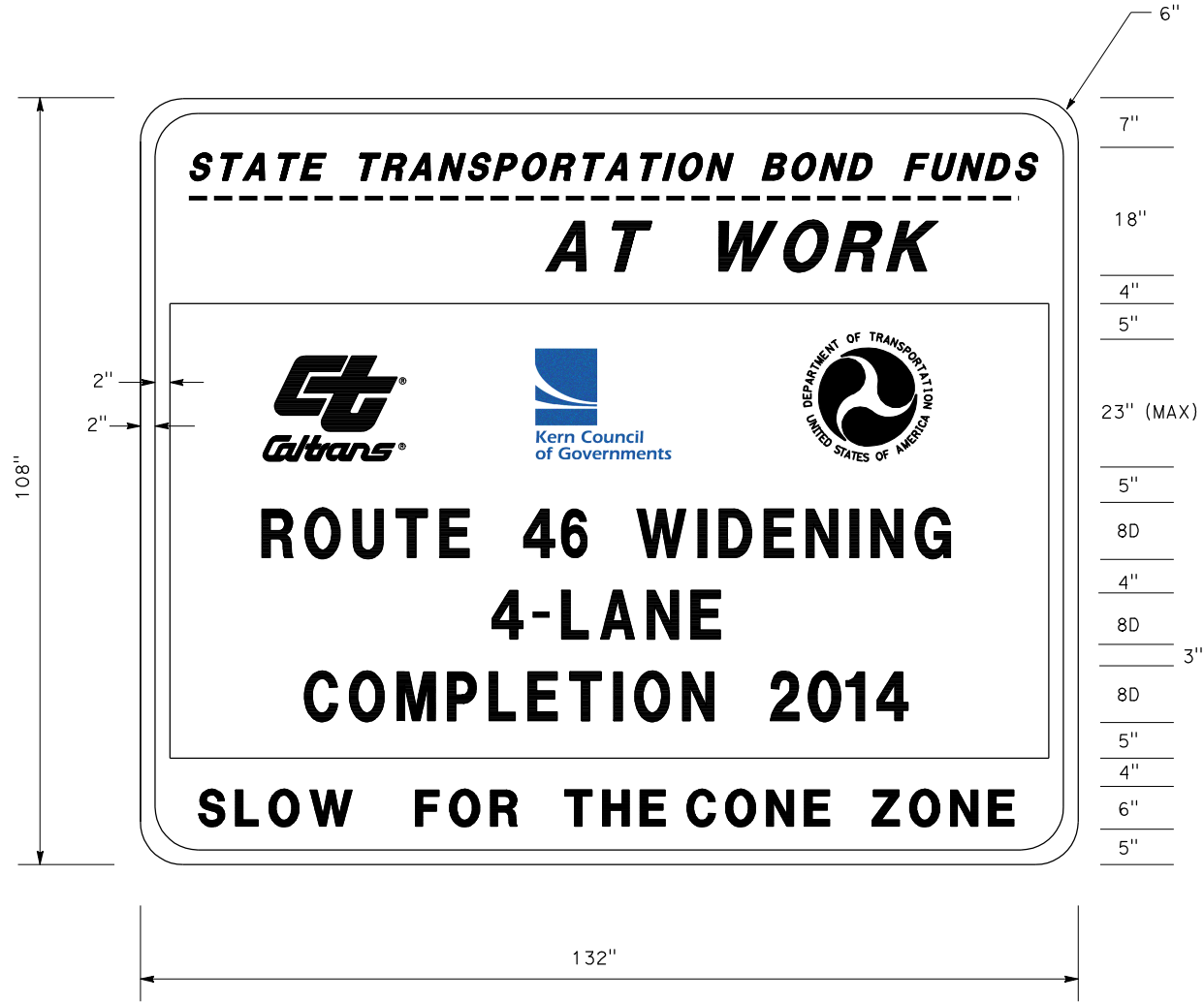
DIST	COUNTY	ROUTE	POST MILES TOTAL PROJECT	SHEET No.	TOTAL SHEETS
06	Ker	46	6.8/19.8		



REGISTERED CIVIL ENGINEER DATE _____

PLANS APPROVAL DATE _____

THE STATE OF CALIFORNIA OR ITS OFFICERS OR AGENTS SHALL NOT BE RESPONSIBLE FOR THE ACCURACY OR COMPLETENESS OF SCANNED COPIES OF THIS PLAN SHEET.



- NOTES:**
1. THE BORDER OF THE SIGN SHALL BE PURPLE. (PANTONE #520)
 2. EXCEPT AS OTHERWISE SHOWN, THE LEGEND OF THE SIGNS SHALL BE BLACK, WHITE AND ORANGE.
 3. THE BACKGROUND OF THE SIGNS SHALL BE PURPLE (PANTONE #520) AND WHITE.
 4. ALL COLORS EXCEPT BLACK ARE TO BE RETROREFLECTIVE. (RSTM II)
 5. SIGN PANELS SHALL COMPLY WITH STANDARD PLANS S93 AND S94.
 6. OVERLAY ENTIRE SIGN FACE WITH PREMIUM GRADE GRAFFITI FILM.
 7. VECTOR FILES FOR THE KERN COUNTY LOGO TO BE SUPPLIED TO THE SIGN MANUFACTURER UPON REQUEST.

CONSTRUCTION PROJECT FUNDING IDENTIFICATION SIGN

NO SCALE

CS-X