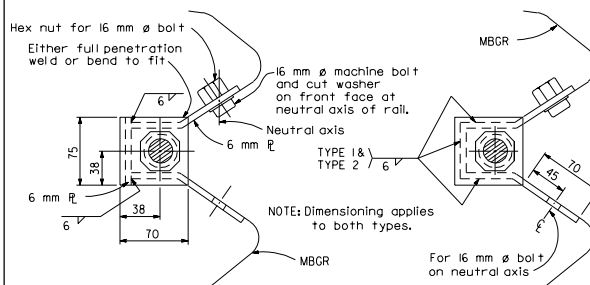
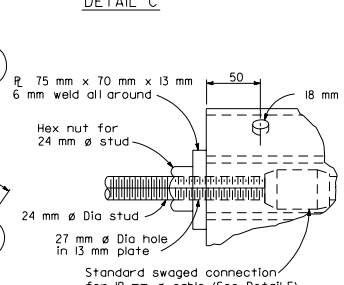


**ELEVATION**  
**TERMINAL ANCHOR ASSEMBLY**  
**(TYPE CA)**  
(Wood post guard railing shown)

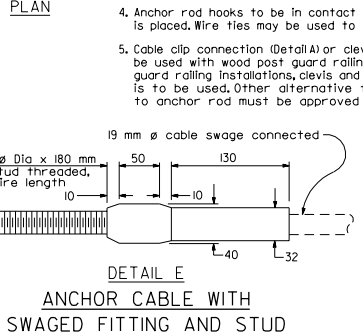
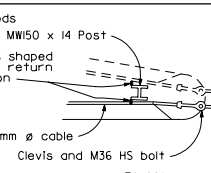


**SECTION A-A**  
(Alternative Type 1)

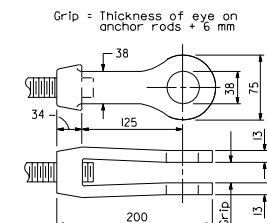


**SECTION A-A**  
(Alternative Type 2)

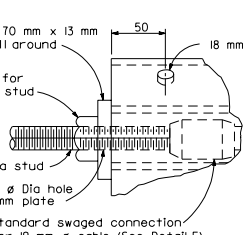
**ANCHOR PLATE DETAILS**



**DETAIL E**  
**ANCHOR CABLE WITH SWAGED FITTING AND STUD**



**CLEVIS**



**DETAIL D**



**ELEVATION**  
**DETAIL B**  
**CLEVIS AND BOLT CONNECTION**  
(Steel post guard railing shown)  
See Note 5

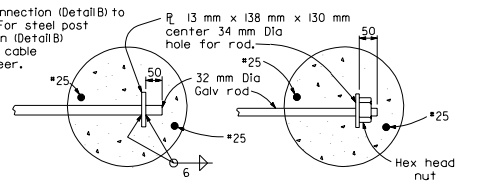
**NOTES**

- For typical use of this terminal anchor, see metal beam guard railing Layout Types 3A, 4A, 5A and 6A on Standard Plans A770 and A771.
- Anchor cable to be parallel to guard railing for straight runs of rail. Anchor cable may have angle point at anchor plate if guard rail is curved.
- Distance between end post and concrete anchor is 1.7 m with terminal section. May be less than 1.7 m with return sections if separate rods connect to concrete anchor.
- Anchor rod hooks to be in contact with anchor reinforcement when concrete is placed. Wire ties may be used to position anchor rods.
- Cable clip connection (Detail A) or clevis and bolt connection (Detail B) to be used with wood post guard railing installation. For steel post guard railing installations, clevis and bolt connection (Detail B) is to be used. Other alternative for attaching cable to anchor rod must be approved by the Engineer.



DIST	COUNTY	ROUTE	KILOMETER TOTAL PROJECT	POST NO.	SHEET NO.	TOTAL SHEETS

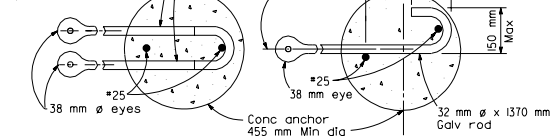
REGISTERED CIVIL ENGINEER  
 July 1, 1999  
 PLANS APPROVAL DATE  
 The State of California or its officers or agents shall not be responsible for the accuracy or completeness of electronic copies of this plan sheet.



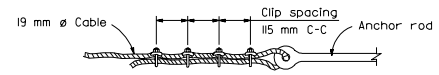
**OPTIONAL ENDS ON SINGLE ANCHOR ROD**  
(Not to be used for double anchors)

**NOTE**

Use two 32 mm diameter galvanized rods with hook and eye for double guard rail anchor.



**DOUBLE ANCHOR**  
**SINGLE ANCHOR**  
**ANCHOR RODS**



"U" bolts of clip on short end of cable only  
"U" bolts tightened to 70 N-m torque

**DETAIL A**  
**CABLE CLIP CONNECTION**  
See Note 5

STATE OF CALIFORNIA  
DEPARTMENT OF TRANSPORTATION  
**METAL BEAM GUARD RAILING**  
**END TREATMENT**  
**TERMINAL ANCHOR ASSEMBLY**  
**(TYPE CA)**

NO SCALE  
ALL DIMENSIONS ARE IN MILLIMETERS UNLESS OTHERWISE SHOWN