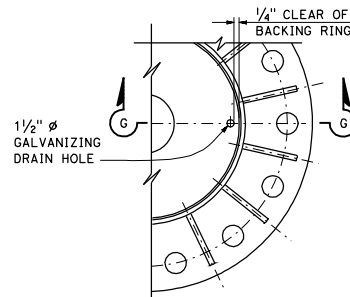
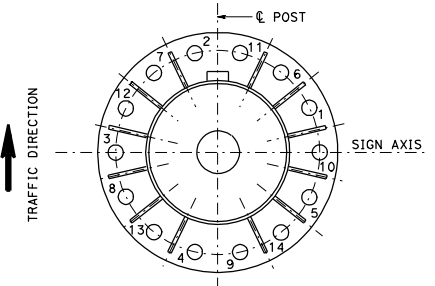


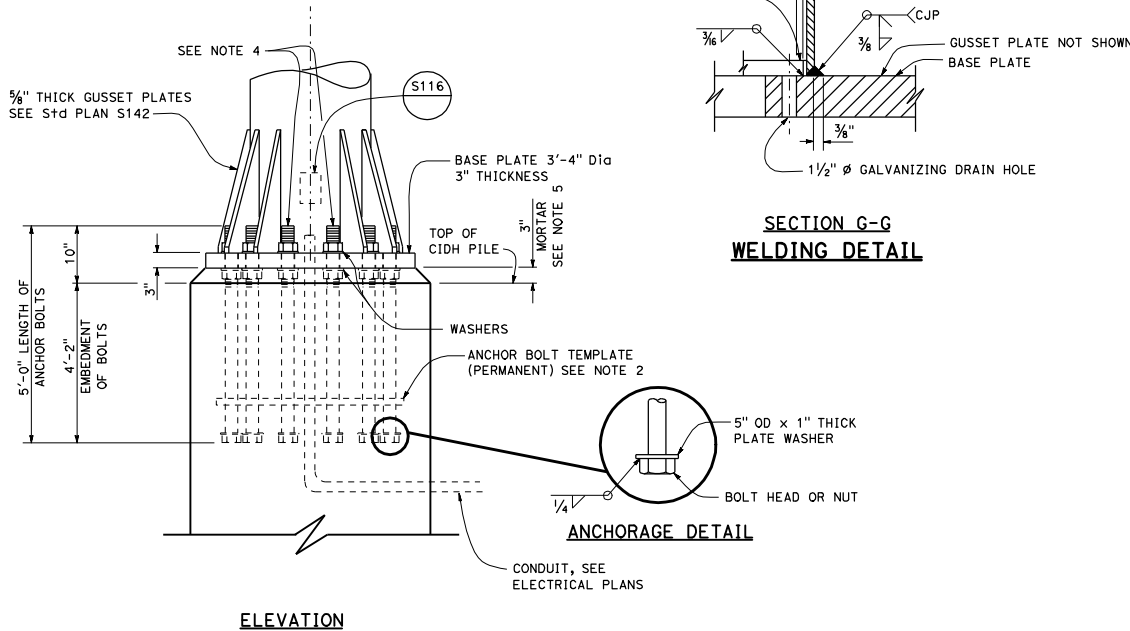
**14 BOLTS
BASE PLATE DETAILS**



GALVANIZING HOLE LAYOUT



TIGHTENING SEQUENCE



NOTES:

1. Thread upper 10" and galvanize upper 1'-0" of the anchor bolts.
2. Provide anchor bolt templates during installation of anchor bolts. Templates to match base plate anchor bolts pattern. See Standard Plans S3 for typical use of templates. OD = 3'-2", ID = 2'-6", hole = 2 5/8" Max. Permanent template thick = 3/4", temporary template thick = 1/2"
3. Following initial tightening. Upper nuts shall be brought to a snug tight condition. This can be obtained by a few impacts of an impact wrench or the full effort of a man using an ordinary spud wrench. Snug tightening shall progress systematically according to the tightening sequence as shown. Upper nuts and washers to have full even bearing on base plate.
4. 2 1/2" Ø Anchor bolts with nut, leveling nut, 2 flat washers, and plate washer per bolt. Leveling nuts and washers to be adjusted for full even bearing on base plate prior to final tightening of upper nuts. (See Note 3).
5. For drain holes and central void in mortar see Standard Plan ES-6B detail N.

STATE OF CALIFORNIA
DEPARTMENT OF TRANSPORTATION

**OVERHEAD SIGN-TRUSS
SINGLE POST TYPE
ANCHORAGE AND BASE
PLATE DETAILS
CHANGEABLE MESSAGE SIGNS
MODEL 500**

NO SCALE

S115

DIST	COUNTY	ROUTE	POST MILES TOTAL PROJECT	SHEET NO.	TOTAL SHEETS

Stanley P. Johnson
REGISTERED CIVIL ENGINEER

May 20, 2011
PLANS APPROVAL DATE

Stanley P. Johnson
No. CS793
Exp. 3-31-12
CIVIL
STATE OF CALIFORNIA

REGISTERED PROFESSIONAL ENGINEER

THE STATE OF CALIFORNIA OR ITS OFFICERS OR AGENTS SHALL NOT BE RESPONSIBLE FOR THE ACCURACY OR COMPLETENESS OF SCANNED COPIES OF THIS PLAN SHEET.