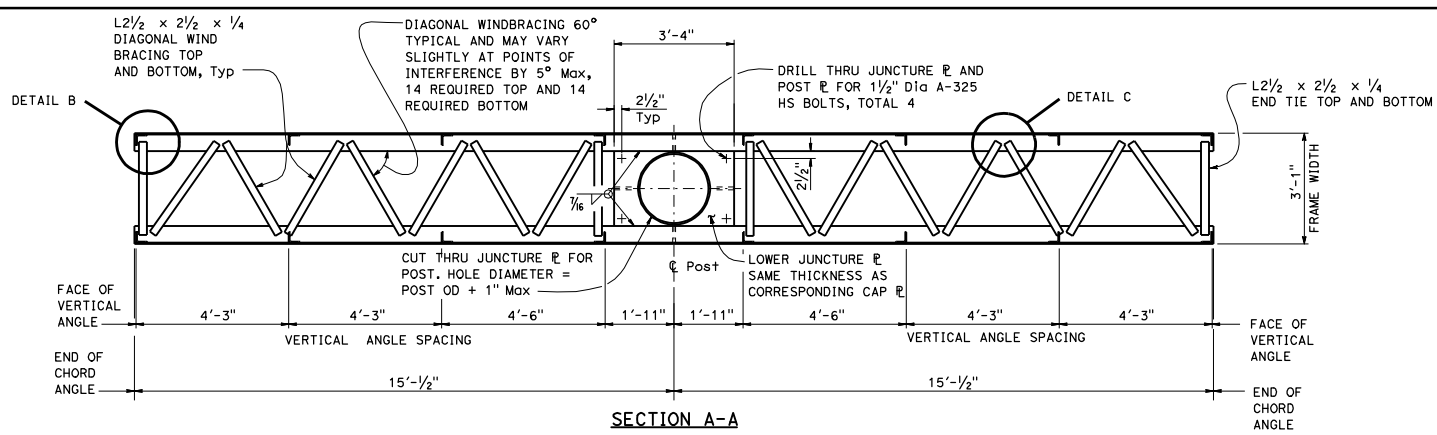


397

DIST	COUNTY	ROUTE	POST MILES TOTAL PROJECT	SHEET NO.	TOTAL SHEETS

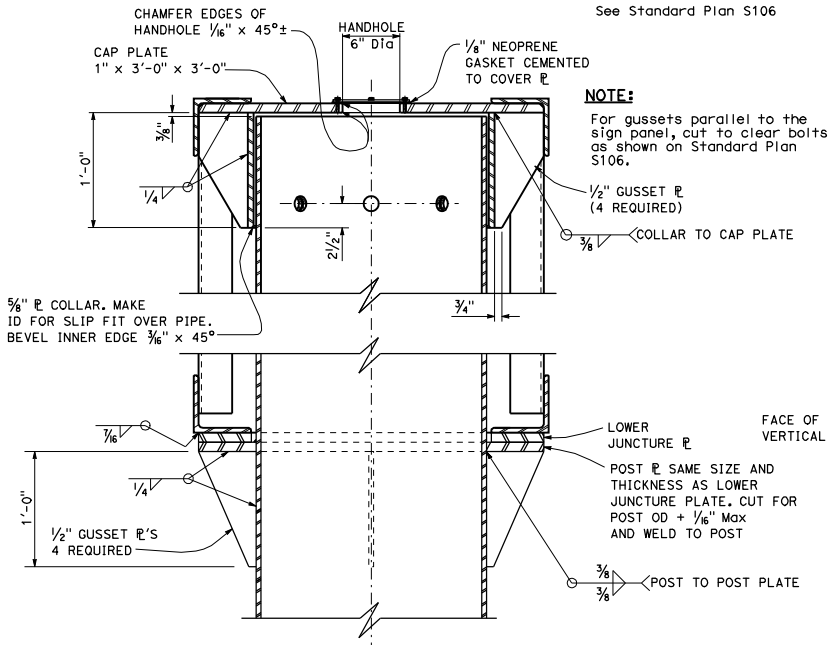
Stanley P. Johnson  
 REGISTERED CIVIL ENGINEER  
 No. CS7793  
 Exp. 3-31-12  
 CIVIL  
 STATE OF CALIFORNIA

May 20, 2011  
 PLANS APPROVAL DATE  
 THE STATE OF CALIFORNIA OR ITS OFFICERS OR AGENTS SHALL NOT BE RESPONSIBLE FOR THE ACCURACY OR COMPLETENESS OF SCANNED COPIES OF THIS PLAN SHEET.

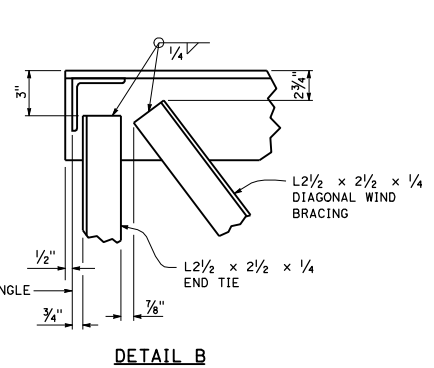


**SECTION A-A**  
**LOWER JUNCTURE CONNECTION**  
 See Standard Plan S106

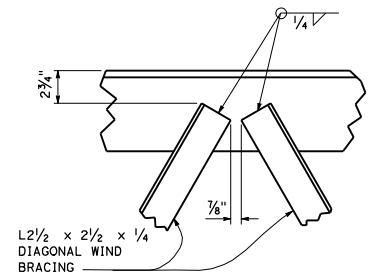
- NOTES:**
1. In all cases, truss shall be supported at lower juncture connection.
  2. Post to truss connections shall be fitted in shop.



**SECTION B-B**  
 See Standard Plan S106



**DETAIL B**



**DETAIL C**

STATE OF CALIFORNIA  
 DEPARTMENT OF TRANSPORTATION  
**OVERHEAD SIGN-TRUSS**  
**SINGLE POST TYPE**  
**FRAME JUNCTURE DETAILS**  
**BALANCED BUTTERFLY**  
**CHANGEABLE MESSAGE SIGNS**  
**MODEL 500**

NO SCALE

**S108**

2010 STANDARD PLAN S108