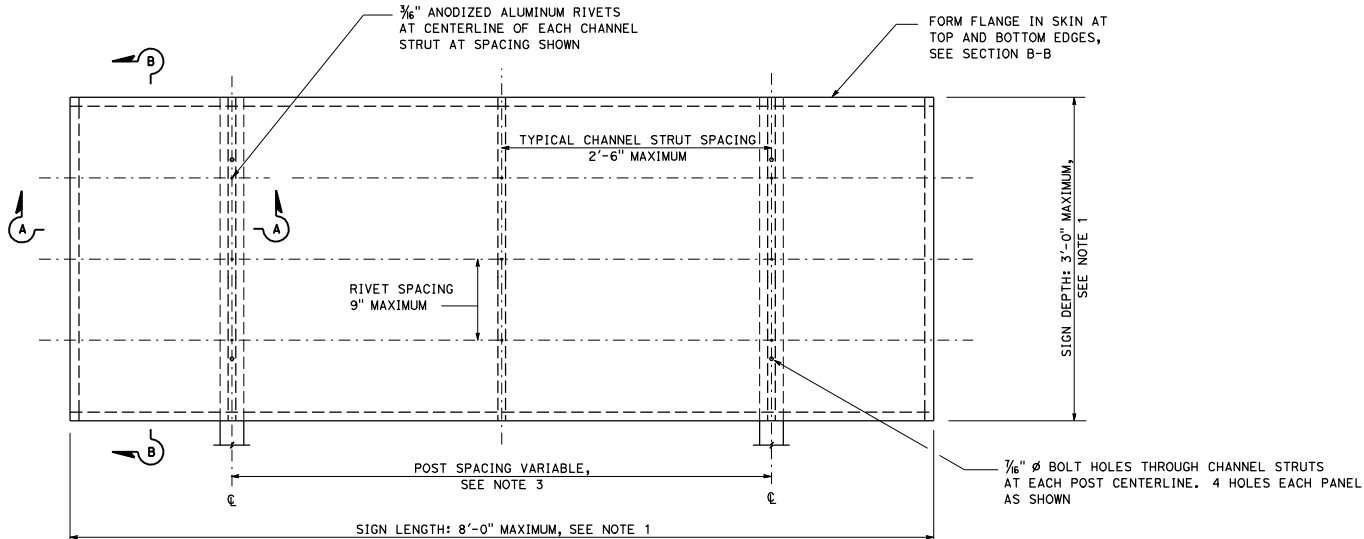


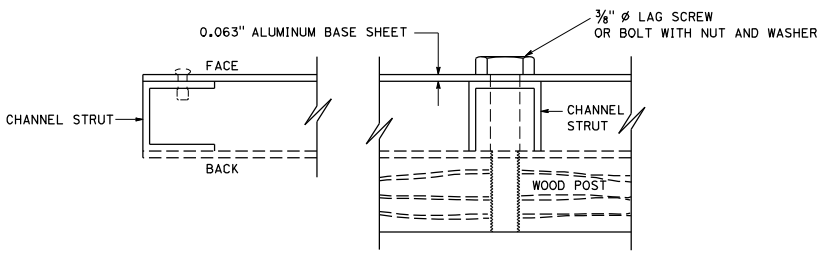
DIST	COUNTY	ROUTE	POST MILES TOTAL PROJECT	SHEET NO.	TOTAL SHEETS

*Stanley P. Johnson*  
 REGISTERED CIVIL ENGINEER  
 No. CS793  
 Exp. 3-31-12  
 CIVIL  
 STATE OF CALIFORNIA

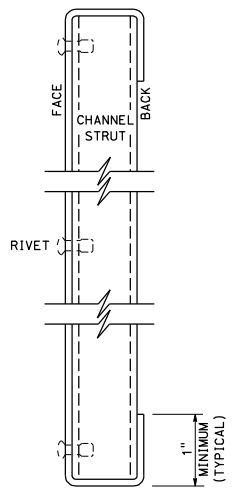
May 20, 2011  
 PLANS APPROVAL DATE  
 THE STATE OF CALIFORNIA OR ITS OFFICERS OR AGENTS SHALL NOT BE RESPONSIBLE FOR THE ACCURACY OR COMPLETENESS OF SCANNED COPIES OF THIS PLAN SHEET.



FACE VIEW OF FORMED PANEL



SECTION A-A



SECTION B-B

NOTES:

1. Sign size to be graduated in 6" increments, both vertically and horizontally. Area of sign not to exceed 20 square feet.
2. Channel strut extrusions shall be 1" x 1" x  $\frac{1}{16}$ " aluminum alloy 6063-T6.
3. See Standard Plan RS2 for post spacing and mounting details.

STATE OF CALIFORNIA  
 DEPARTMENT OF TRANSPORTATION  
**ROADSIDE SIGN-FORMED  
 SINGLE SHEET ALUMINUM PANEL**

NO SCALE

S89