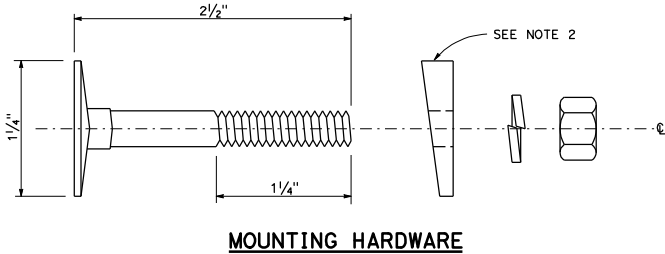


**A-2 HARDWARE QUANTITY TABLE
(STANDARD TUBULAR)**

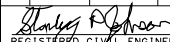
SIGN LENGTH	SIGN DEPTH SEE NOTE 6	UNITS REQUIRED SEE NOTE 5
14'-0" OR LESS	4'-2" TO 5'-0"	9
15'-0" TO 20'-0"	4'-2" TO 5'-0"	13
21'-0" TO 24'-0"	4'-2" TO 5'-0"	17
14'-0" OR LESS	5'-10" TO 10'-0"	17
15'-0" TO 20'-0"	5'-10" TO 10'-0"	25
21'-0" TO 24'-0"	5'-10" TO 10'-0"	33



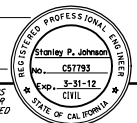
NOTES:

1. Refer to applicable Standard Plan for additional mounting details.
2. Beveled washer for tapered flange only.
3. Elevator head bolt, hexagon nut, and lock washer shall be 5/8" diameter (18-8) stainless steel.
4. Furnish retroreflective stick-ons for bolt head in same color as sign. Retroreflective stick-ons are applied at time of installation.
5. One unit of A-2 hardware shall consist of one each; bolt nut, lock washer and beveled washer. Quantity listed includes 1 spare unit.
6. Signs 9'-2" and 10'-0" in depth may be fabricated in three panel sections to avoid legend from being placed on a horizontal seam. Increase number of units of mounting hardware accordingly.

DIST	COUNTY	ROUTE	POST MILES TOTAL PROJECT	SHEET NO.	TOTAL SHEETS


 REGISTERED CIVIL ENGINEER

May 20, 2011
 PLANS APPROVAL DATE



THE STATE OF CALIFORNIA OR ITS OFFICERS OR AGENTS SHALL NOT BE RESPONSIBLE FOR THE ACCURACY OR COMPLETENESS OF SCANNED COPIES OF THIS PLAN SHEET.

STATE OF CALIFORNIA
 DEPARTMENT OF TRANSPORTATION
**TYPE A-2 MOUNTING HARDWARE
 FOR OVERHEAD LAMINATED
 TYPE A PANEL
 (BRIDGE MOUNTED AND
 TUBULAR SIGN STRUCTURES)**

NO SCALE

S88