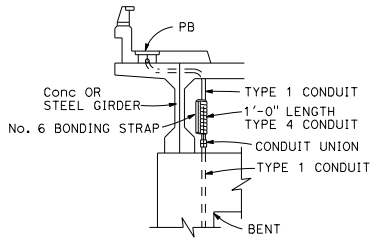
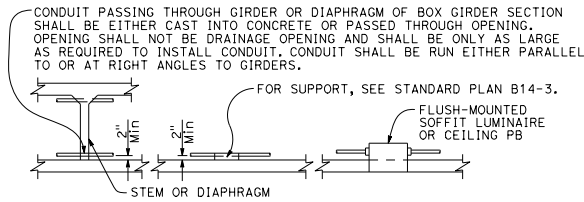


DIST	COUNTY	ROUTE	POST MILES TOTAL PROJECT	SHEET NO.	TOTAL SHEETS

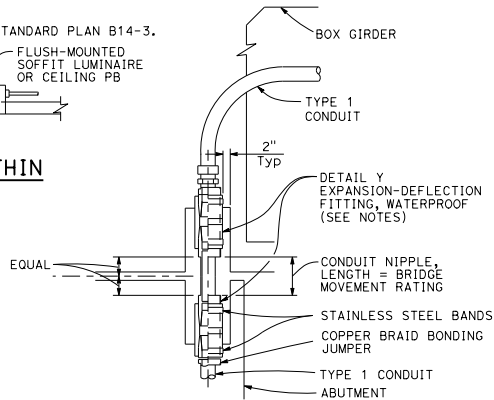
Raymond S. Gilii
 REGISTERED ELECTRICAL ENGINEER
 No. E18551
 Exp. 12-31-16
 THE STATE OF CALIFORNIA OR ITS OFFICERS OR AGENTS SHALL NOT BE RESPONSIBLE FOR THE ACCURACY OR COMPLETENESS OF SCANNED COPIES OF THIS PLAN SHEET.



CONDUIT RISER CONNECTION
DETAIL R



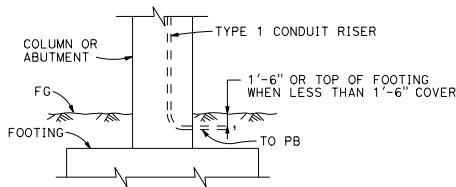
CONDUIT INSTALLATION WITHIN BOX GIRDER SECTIONS
DETAIL S



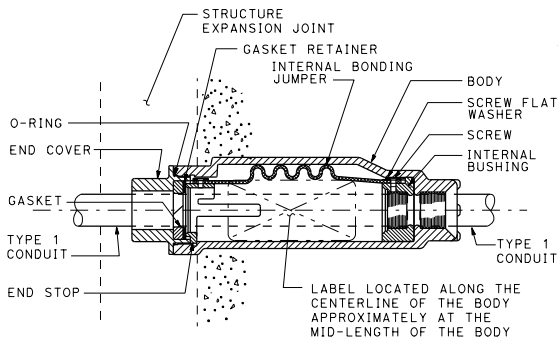
NOTES:

1. Fitting and pocket required only where movement can occur between girder and abutment.
2. Fill pocket around fitting with resilient waterproof compound.

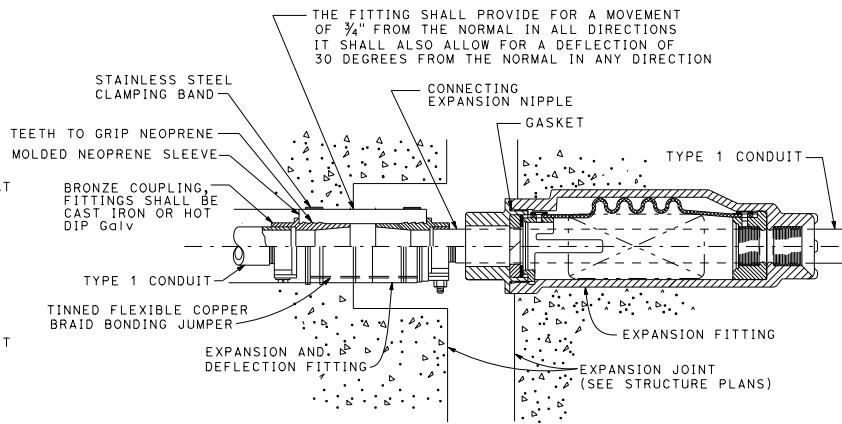
CONDUIT RISER CONNECTION AT COLUMN, ABUTMENT OR STRUCTURE WING WALL
DETAIL U



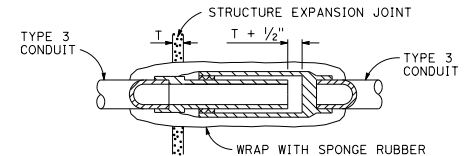
LOWER END OF CONDUIT RISER AT COLUMN OR ABUTMENT
DETAIL T



CONDUIT EXPANSION FITTING
DETAIL X

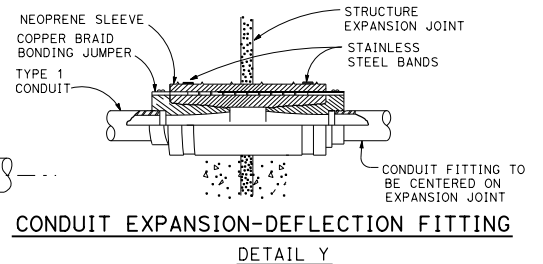


COMBINATION EXPANSION-DEFLECTION FITTINGS METALLIC CONDUIT INSTALLATION
DETAIL XY



NON-METALLIC CONDUIT EXPANSION FITTING INSTALLATION DETAIL
DETAIL V

To be used only when shown or specified on Project Plans



CONDUIT EXPANSION-DEFLECTION FITTING
DETAIL Y

STATE OF CALIFORNIA
DEPARTMENT OF TRANSPORTATION
ELECTRICAL SYSTEMS (CONDUIT RISER AND EXPANSION FITTING, STRUCTURE INSTALLATIONS)
NO SCALE

RSP ES-9B DATED OCTOBER 30, 2015 SUPERSEDES STANDARD PLAN ES-9B DATED MAY 20, 2011 - PAGE 482 OF THE STANDARD PLANS BOOK DATED 2010.

REVISED STANDARD PLAN RSP ES-9B

2010 REVISED STANDARD PLAN RSP ES-9B