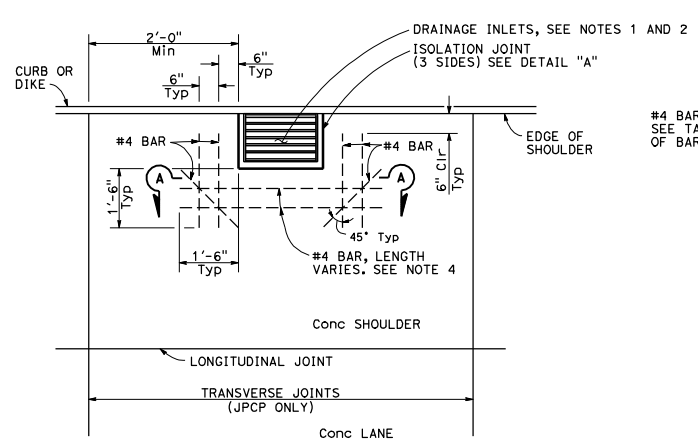


D16+	COUNTY	ROUTE	POST MILES TOTAL PROJECT	SHEET NO.	TOTAL SHEETS
------	--------	-------	--------------------------	-----------	--------------

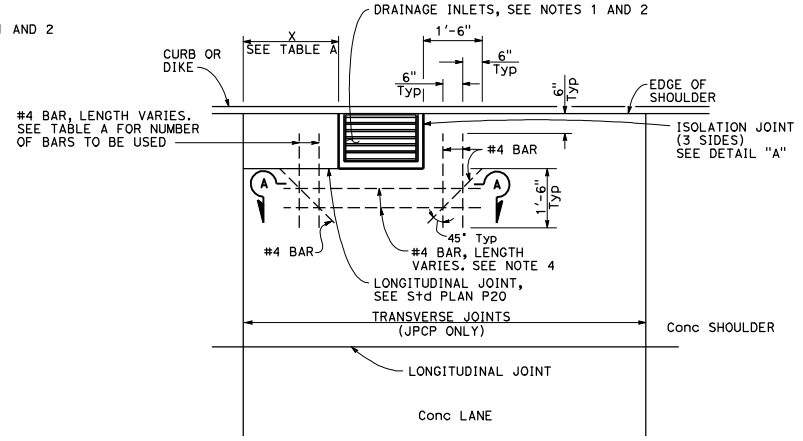
William K. Farnbach  
 REGISTERED CIVIL ENGINEER  
 May 20, 2011  
 PLANS APPROVAL DATE  
 THE STATE OF CALIFORNIA OR ITS OFFICERS OR AGENTS SHALL NOT BE RESPONSIBLE FOR THE ACCURACY OR COMPLETENESS OF SCANNED COPIES OF THIS PLAN SHEET.

REGISTERED PROFESSIONAL ENGINEER  
 William K. Farnbach  
 No. C49042  
 Exp. 9-30-12  
 CIVIL  
 STATE OF CALIFORNIA



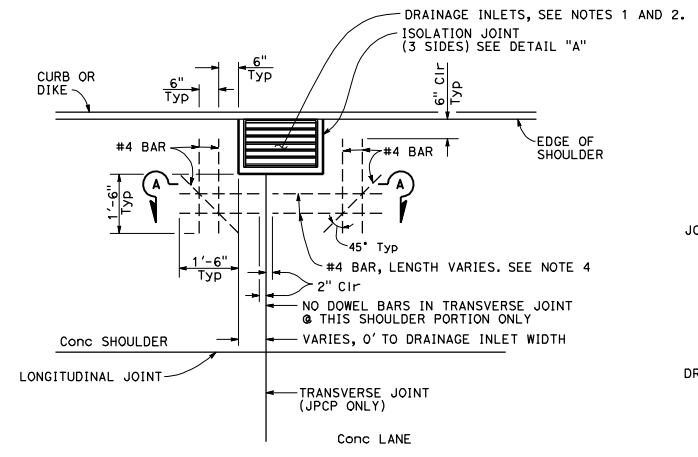
**CASE 1**

Transverse joint more than 2'-0" clear of drainage inlet wall or no transverse joint



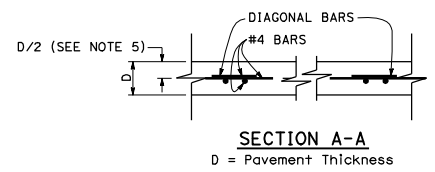
**CASE 3**

Transverse joint within 2'-0" of drainage inlet wall, or matches drainage inlet wall.



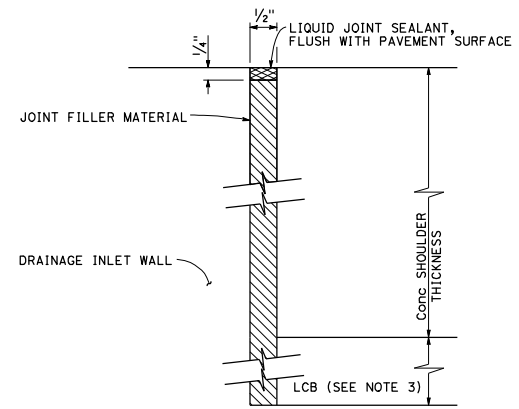
**CASE 2**

Transverse joint intersects drainage inlet, or matches drainage inlet wall.



**SECTION A-A**

D = Pavement Thickness



**DETAIL "A"**

**ISOLATION JOINT AROUND DRAINAGE INLET**

**NOTES:**

1. Refer to Project Plans for location and type of drainage inlets.
2. Top of inlet shall be flush with shoulder surface.
3. Extend joint filler material to bottom of Lean Concrete Base. Where Lean Concrete Base is not used as base material, the joint filler material shall only extend to the bottom of the new concrete pavement.
4. For Jointed Plain Concrete Pavement only. For Continuously Reinforced Concrete Pavement, terminate pavement steel reinforcement 2' clear from all outside edges of isolation joint.
5. For Jointed Plain Concrete Pavement only. For Continuously Reinforced Concrete Pavement, see Standard Plan P4.
6. Dowel and tie bars not shown, see Standard Plan P1.

**TABLE A**

DISTANCE X	BARs REQUIRED
2'-0" TO 1'-6"	2
1'-6" TO 9"	1 @ X/2
9" OR LESS	NONE

STATE OF CALIFORNIA  
DEPARTMENT OF TRANSPORTATION  
**CONCRETE PAVEMENT-  
DRAINAGE INLET  
DETAILS No. 1**

NO SCALE