

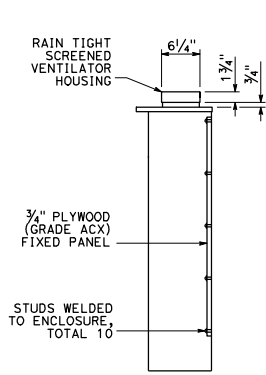
D16+	COUNTY	ROUTE	POST MILES TOTAL PROJECT	SHEET NO.	TOTAL SHEETS

*Jeffery G. McBoo*  
REGISTERED ELECTRICAL ENGINEER

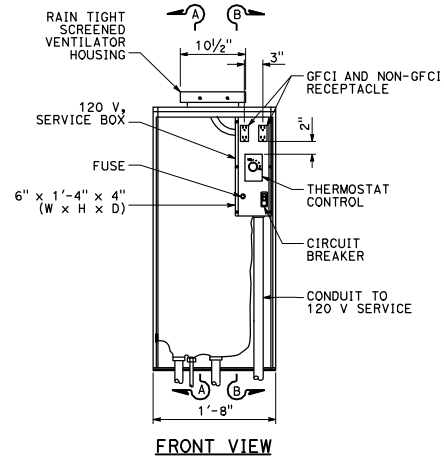
May 20, 2011  
PLANS APPROVAL DATE

No. E14512  
Exp. 6-30-12  
ELECTRICAL  
STATE OF CALIFORNIA

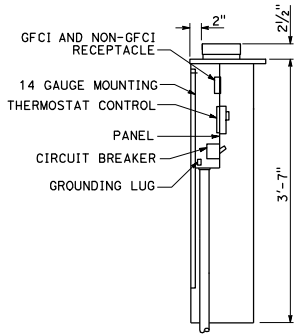
THE STATE OF CALIFORNIA OR ITS OFFICERS OR AGENTS SHALL NOT BE RESPONSIBLE FOR THE ACCURACY OR COMPLETENESS OF SCANNED COPIES OF THIS PLAN SHEET.



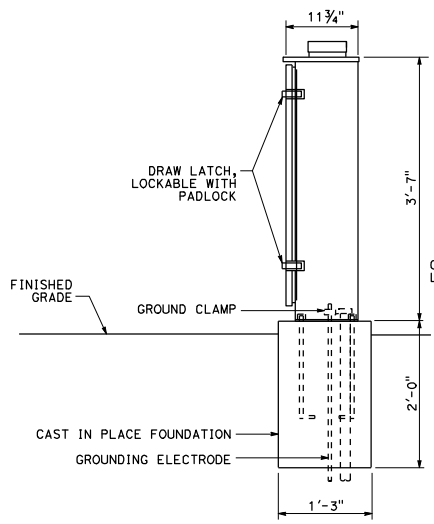
SECTION A-A



FRONT VIEW  
INTERIOR  
DETAIL A

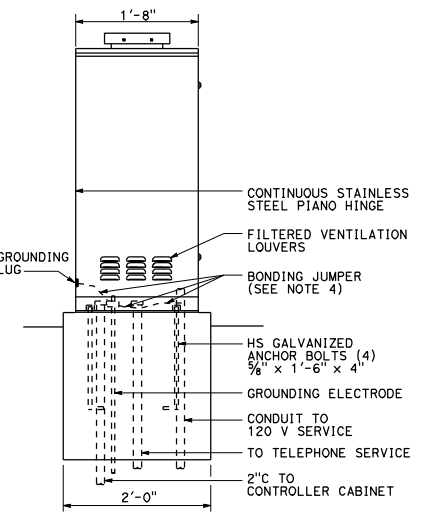


SECTION B-B

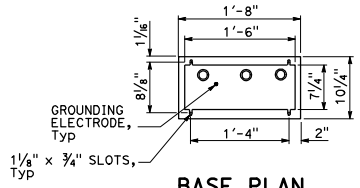


SIDE VIEW

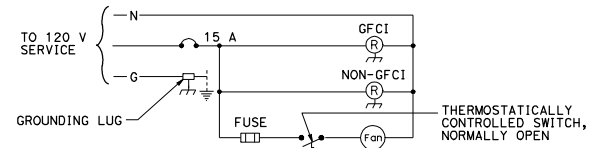
EXTERIOR  
DETAIL B



FRONT VIEW



BASE PLAN  
DETAIL C



WIRING DIAGRAM  
DETAIL D

STATE OF CALIFORNIA  
DEPARTMENT OF TRANSPORTATION  
**ELECTRICAL SYSTEMS  
(TELEPHONE DEMARICATION  
CABINET, TYPE B)**

NO SCALE

**NOTES:**

1. Telephone demarcation cabinet shall be furnished with a mounting panel, outlets, circuit breaker and dead front plates in place. Dimensions are nominal.
2. An approved mastic or caulking compound shall be placed on the foundation prior to placing the cabinet to seal openings between the bottom of the cabinet and the foundation.
3. In unpaved areas, a raised PCC pad shall be placed in front of the telephone demarcation cabinet. Pad shall be 2'-0" x 1'-10" x 4" thick, with 2" above the finished grade.
4. All conduits shall be bonded to the enclosure.
5. Telephone demarcation cabinet:
  - a. Material shall be anodized aluminum (1/8" thick).
  - b. Fabrication shall conform to the requirements in Section 86-3.04 of the Standard Specifications.
  - c. The exterior door shall be side hung and secured with a draw latch, lockable with a padlock. The padlock hole shall be a minimum diameter of 7/8" to receive a padlock.
  - d. Ventilation louvers shall be located on the door.
  - e. Fan shall be mounted in a ventilator housing.
  - f. Fan shall be thermostatically controlled and adjustable to turn on between 80 °F and 130 °F.
  - g. Fan circuit shall be fused at 175 percent of the fan motor capacity.
  - h. Fan capacity shall be at least 25 cubic feet per minute.
  - i. Fasten fixed mounting panels with nuts, lock and flat washers to 3/16" ø x 1" studs welded to enclosure.