

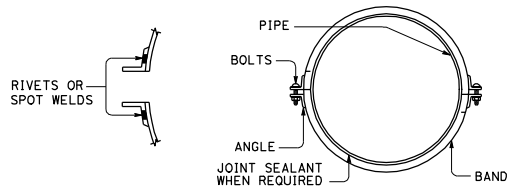
D16+	COUNTY	ROUTE	POST MILES TOTAL PROJECT	SHEET NO.	TOTAL SHEETS

Glenn DeCou
 REGISTERED CIVIL ENGINEER

May 20, 2011
 PLANS APPROVAL DATE

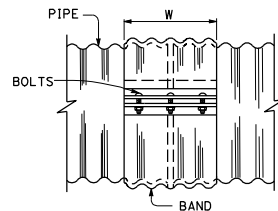
Glenn DeCou
 No. C34547
 Exp. 9-30-11
 CIVIL
 STATE OF CALIFORNIA

THE STATE OF CALIFORNIA OR ITS OFFICERS OR AGENTS SHALL NOT BE RESPONSIBLE FOR THE ACCURACY OR COMPLETENESS OF SCANNED COPIES OF THIS PLAN SHEET.

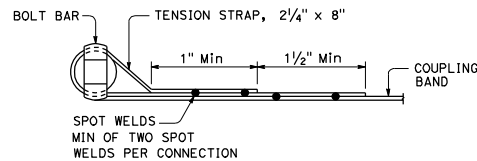


END VIEW

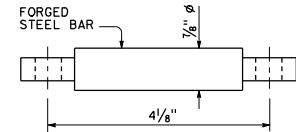
ANNULAR BAND



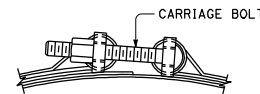
SIDE VIEW



STRAP DETAIL



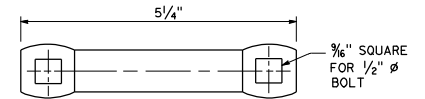
TOP VIEW



BOLT DETAIL



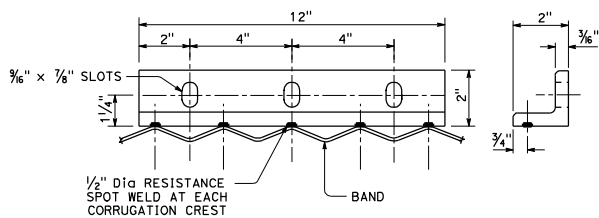
LEFT SIDE VIEW



FRONT VIEW

BAR DETAIL

BAR AND STRAP CONNECTOR



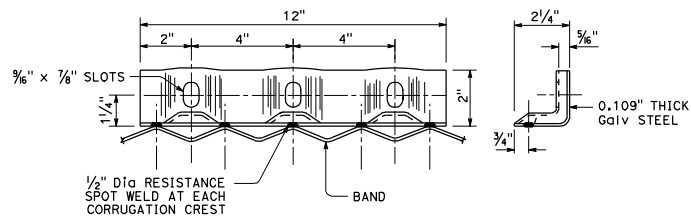
SIDE VIEW

END VIEW

2" x 2" x 3/16" ANGLE

See tables on Standard Plans D97E, D97F and D97G for width, W=12" shown.

ANGLE CONNECTORS



SIDE VIEW

END VIEW

DIE-FORMED ANGLE

See tables on Standard Plans D97E and D97G for width, W=12" shown. Alternate only for standard joints on pipes through 72" diameter and downdrains through 24" diameter.

NOTES:

1. All ferrous metal coupling band connection hardware shall be galvanized or electroplated in accordance with the Standard Specifications.
2. Dimensions and thicknesses shown are minimum.
3. Spot welds shall develop minimum required strength of strap.
4. Fillet welds of equivalent strength may be substituted for spot welds or rivets.

STATE OF CALIFORNIA
DEPARTMENT OF TRANSPORTATION

**CORRUGATED METAL PIPE
COUPLING DETAILS No. 1
ANNULAR COUPLING BAND BAR
AND STRAP AND
ANGLE CONNECTIONS**

NO SCALE

D97A