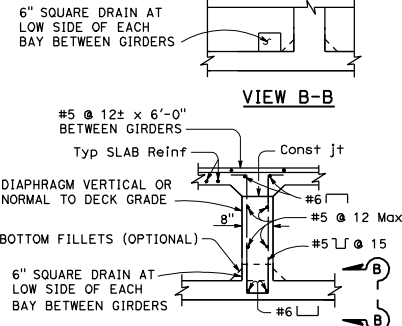


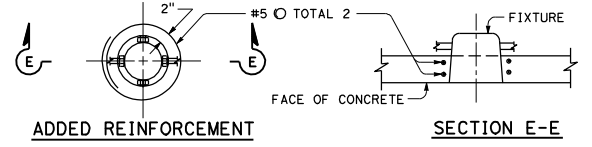
SEE (BO-5/5-5) FOR ALTERNATIVE STIRRUPS. SEE (BB-5) FOR PRESTRESSED GIRDER DETAILS.

**TYPICAL BOX GIRDER DETAILS**  
**DETAIL B-1**

\* At all web construction joints

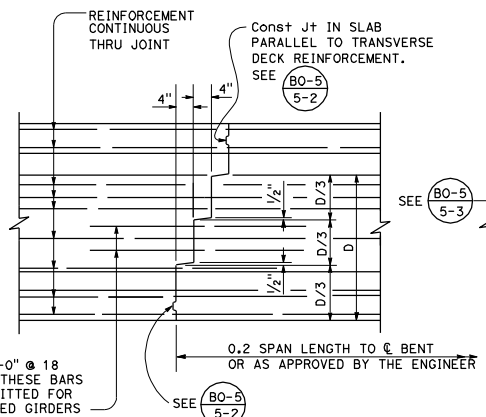


**INTERMEDIATE DIAPHRAGM SECTION**  
**DETAIL D-1**

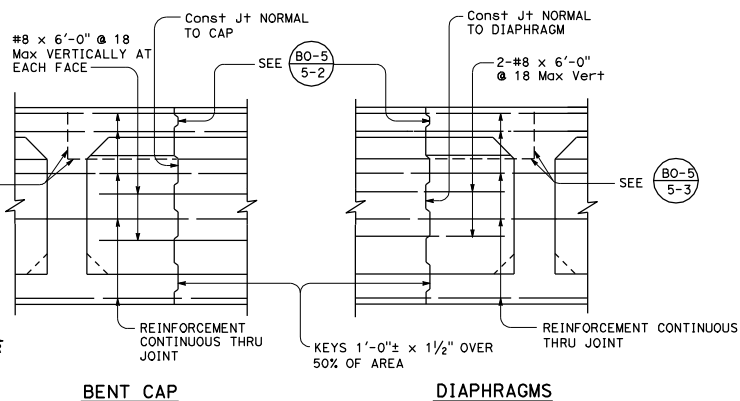


**ADDED REINFORCEMENT**

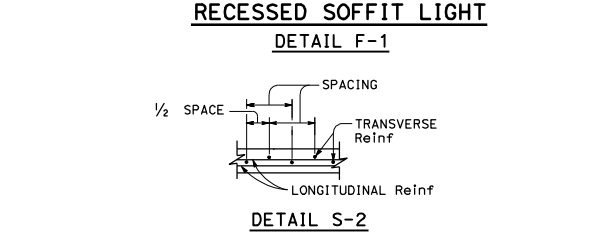
**RECESSED SOFFIT LIGHT**  
**DETAIL F-1**



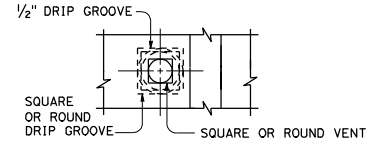
**TRANSVERSE GIRDER CONSTRUCTION JOINTS**  
**DETAIL J-3**



**BENT CAP LONGITUDINAL CONSTRUCTION JOINTS**  
**DETAIL J-4**

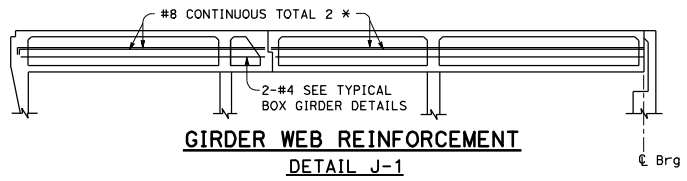


**BOTTOM SLAB TRANSVERSE REINFORCEMENT**  
**SPACING DIAGRAM**  
**DETAIL S-2**

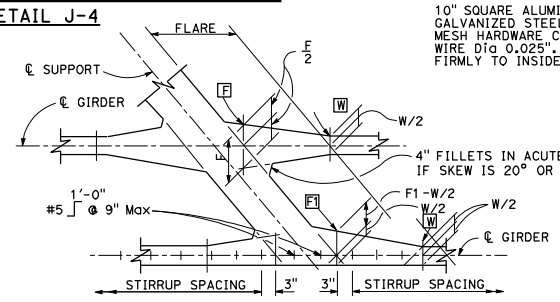


**NOTE:**  
5" ø or ø vent in lower slab. Minimum of two vents per span in each bay between girders. One vent to be located at low point of span and other vent to be located at opposite end of span @ 1'-6" from face of abutment or bent.

**VENT**  
**DETAIL V-1**



**GIRDER WEB REINFORCEMENT**  
**DETAIL J-1**



**TYPICAL GIRDER FLARE AND STIRRUP SPACING DIAGRAM**  
**DETAIL S-3**

[W] and [F] denote girder width in inches.

STATE OF CALIFORNIA  
DEPARTMENT OF TRANSPORTATION  
**BOX GIRDER DETAILS**  
NO SCALE

DIST	COUNTY	ROUTE	POST MILES TOTAL PROJECT	SHEET TOTAL SHEETS

REGISTERED CIVIL ENGINEER  
*Madhesh Rajgavendrachy*  
No. CS1119  
Exp. 9-30-11  
STATE OF CALIFORNIA

May 20, 2011  
PLANS APPROVAL DATE

THE STATE OF CALIFORNIA OR ITS OFFICERS OR AGENTS SHALL NOT BE RESPONSIBLE FOR THE ACCURACY OR COMPLETENESS OF SCANNED COPIES OF THIS PLAN SHEET.