

**NOTES: (FOR LIGHTING AND SIGN ILLUMINATION CONTROL)**

1. The ballast voltages of lighting fixtures and luminaires shall match line service voltages.
2. Voltage rating of photoelectric controls shall conform to the service voltage indicated on the plans.
3. Terminal strip shall be provided for wiring to fixtures.
4. Type SC1A, SC2A, SC3A controls are similar to Types SC1, SC2 and SC3 controls respectively except test switch and wiring are not required.

DIST	COUNTY	ROUTE	POST MILES TOTAL PROJECT	SHEET NO.	TOTAL SHEETS

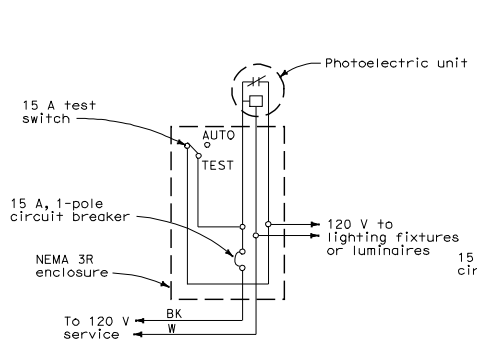
*Jeffrey G. McPhee*  
REGISTERED ELECTRICAL ENGINEER

October 5, 2007  
PLANS APPROVAL DATE

Jeffrey G. McPhee  
No. E14512  
Exp. 6-30-08  
ELECTRICAL  
STATE OF CALIFORNIA

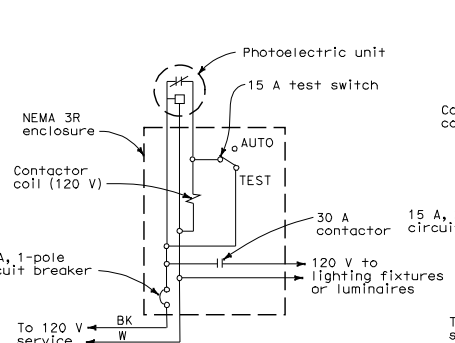
The State of California or its officers or agents shall not be responsible for the accuracy or completeness of electronic copies of this plan sheet.

To accompany plans dated \_\_\_\_\_



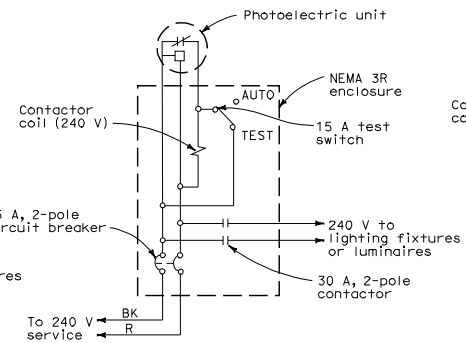
**TYPE LC1 CONTROL**

For 120 V unswitched circuit with no more than 800 W load.



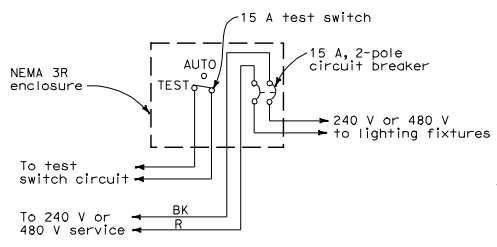
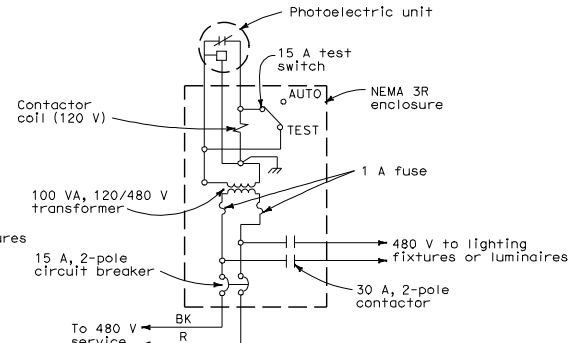
**TYPE LC2 CONTROL**

For 120 V unswitched circuit



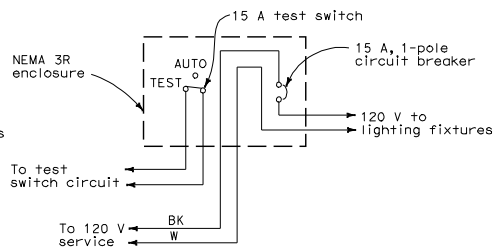
**TYPE LC3 CONTROL**

For 240 V and 480 V unswitched circuits



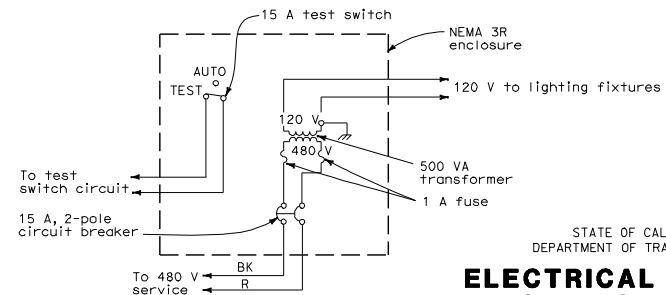
**TYPE SC1 CONTROL**

For 240 V or 480 V switched circuit, see Note 4 for Type SC1A



**TYPE SC2 CONTROL**

For 120 V switched circuit, see Note 4 for Type SC2A



**TYPE SC3 CONTROL**

For 480 V switched sign circuit, see Note 4 for Type SC3A

STATE OF CALIFORNIA  
DEPARTMENT OF TRANSPORTATION  
**ELECTRICAL SYSTEMS  
(LIGHTING AND SIGN ILLUMINATION CONTROL)**  
NO SCALE

RSP ES-15D DATED OCTOBER 5, 2007 SUPERCEDES STANDARD PLAN ES-15D DATED MAY 1, 2006 - PAGE 472 OF THE STANDARD PLANS BOOK DATED MAY 2006.

**REVISED STANDARD PLAN RSP ES-15D**