

| DIST | COUNTY | ROUTE | POST MILES<br>TOTAL PROJECT | SHEET NO. | TOTAL SHEETS |
|------|--------|-------|-----------------------------|-----------|--------------|
|      |        |       |                             |           |              |

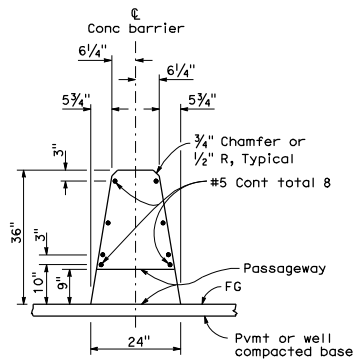
*Randell D. Hiatt*  
REGISTERED CIVIL ENGINEER

June 6, 2008  
PLANS APPROVAL DATE

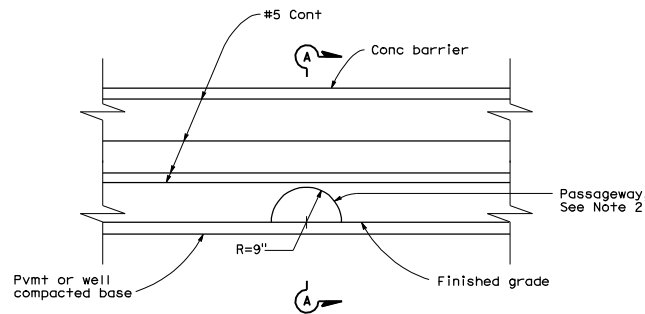
REGISTERED PROFESSIONAL ENGINEER  
No. CS0200  
Exp. 6-30-09  
CIVIL  
STATE OF CALIFORNIA

The State of California or its officers or agents shall not be responsible for the accuracy or completeness of electronic copies of this plan sheet.

To accompany plans dated \_\_\_\_\_



**SECTION A-A**  
(Concrete Barrier Type 60 shown)



**ELEVATION**  
(See Notes 1 and 3)

**NOTES:**

1. Type S Passageway typically used for crossing of small size animals.
2. At the option of the Contractor, the passageway opening shall be constructed by using either the cast-in-place method, with the allowance of the form to be left in place, or once the barrier is constructed, drilling through the barrier to create the opening.
3. See Revised Standard Plan RSP A76A for typical details of Concrete Barrier Type 60.

STATE OF CALIFORNIA  
DEPARTMENT OF TRANSPORTATION  
**CONCRETE BARRIER  
WILDLIFE PASSAGEWAY  
(TYPE S)**

NO SCALE

RSP A76J DATED JUNE 6, 2008 SUPERSEDES STANDARD PLAN A76J  
DATED MAY 1, 2006 - PAGE 38 OF THE STANDARD PLANS BOOK DATED MAY 2006.

**REVISED STANDARD PLAN RSP A76J**