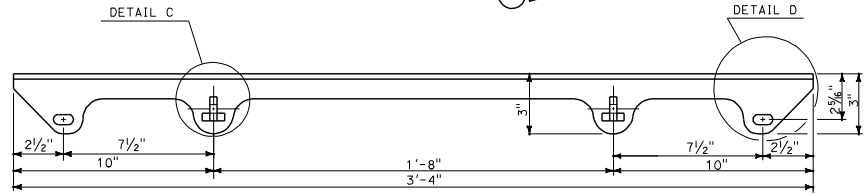
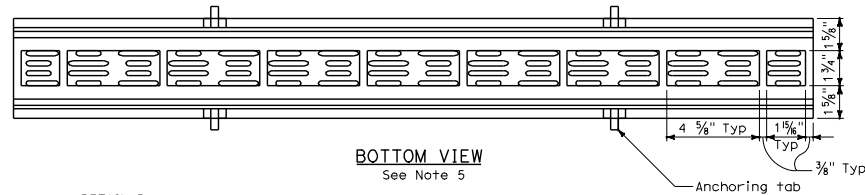


PLAN

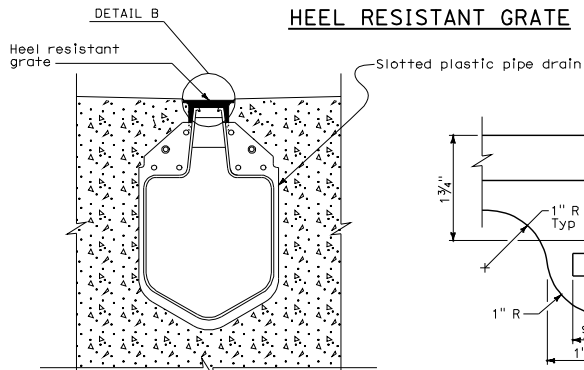


ELEVATION
See Note 5

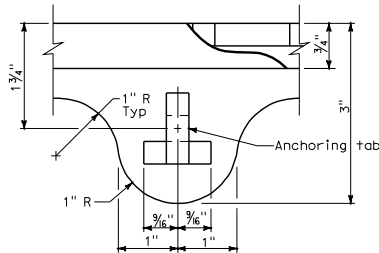


BOTTOM VIEW
See Note 5

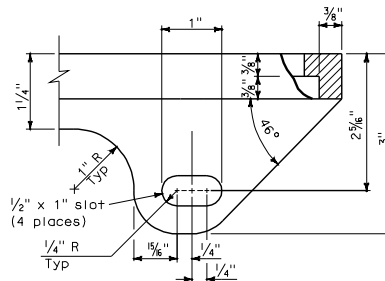
HEEL RESISTANT GRATE



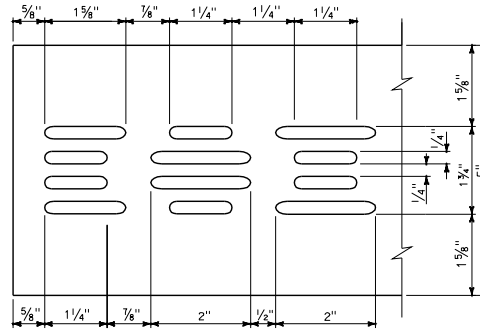
TYPICAL SLOTTED PLASTIC PIPE DRAIN WITH HEEL RESISTANT GRATE



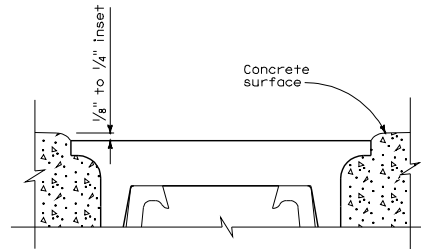
DETAIL C



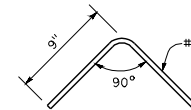
DETAIL D
See Note 4



DETAIL A

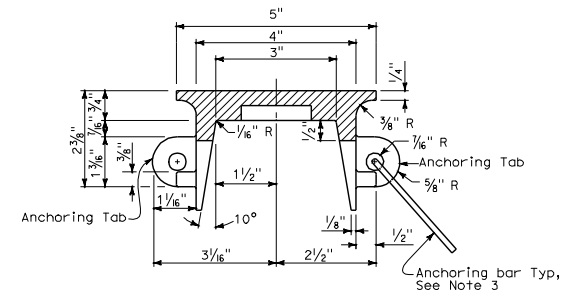


DETAIL B



ANCHORING BAR DETAIL

See Note 3



SECTION A-A

STATE OF CALIFORNIA
DEPARTMENT OF TRANSPORTATION

HEEL RESISTANT GRATE FOR SLOTTED PLASTIC PIPE DRAIN

NO SCALE

NSP D98E DATED JANUARY 18, 2008 SUPPLEMENTS
THE STANDARD PLANS BOOK DATED MAY 2006.

NEW STANDARD PLAN NSP D98E

DIST	COUNTY	ROUTE	POST MILES TOTAL PROJECT	SHEET NO.	TOTAL SHEETS

Raymond Don Tustop
 REGISTERED CIVIL ENGINEER
 No. C37332
 Exp. 6-30-08
 CIVIL
 STATE OF CALIFORNIA

January 18, 2008
 PLANS APPROVAL DATE
 The State of California or its officers or agents shall not be responsible for the accuracy or completeness of electronic copies of this plan sheet.

NOTES:

1. Grate patterns may vary from detail shown. See special provisions for requirements.
2. 3/16" maximum gap between adjacent gratings.
3. Use anchoring bar through each anchoring tab to anchor heel resistant grate to concrete backfill. 4 locations for each grate section.
4. Use 3/8" diameter bolt, nut, and washer to hold grate to slotted drain, prior to backfilling with concrete. 4 locations.
5. Anchoring bars are not shown.

To accompany plans dated _____