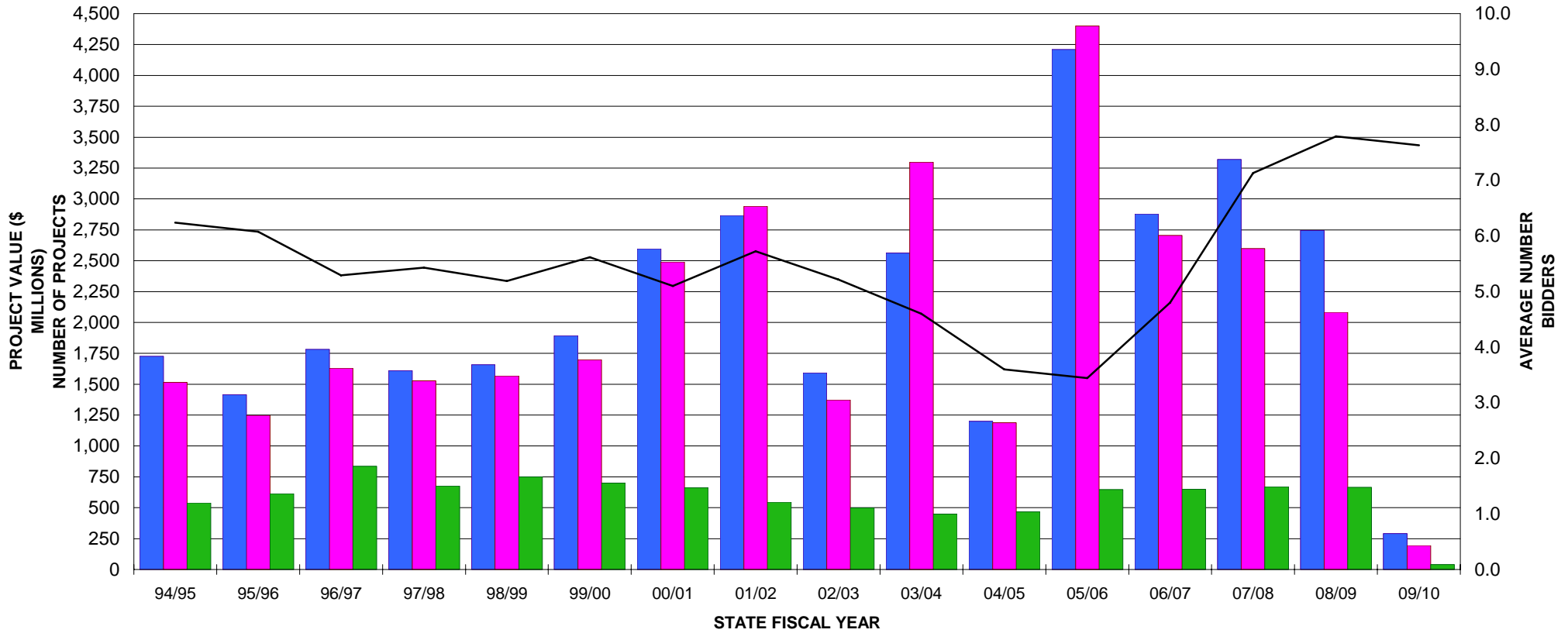
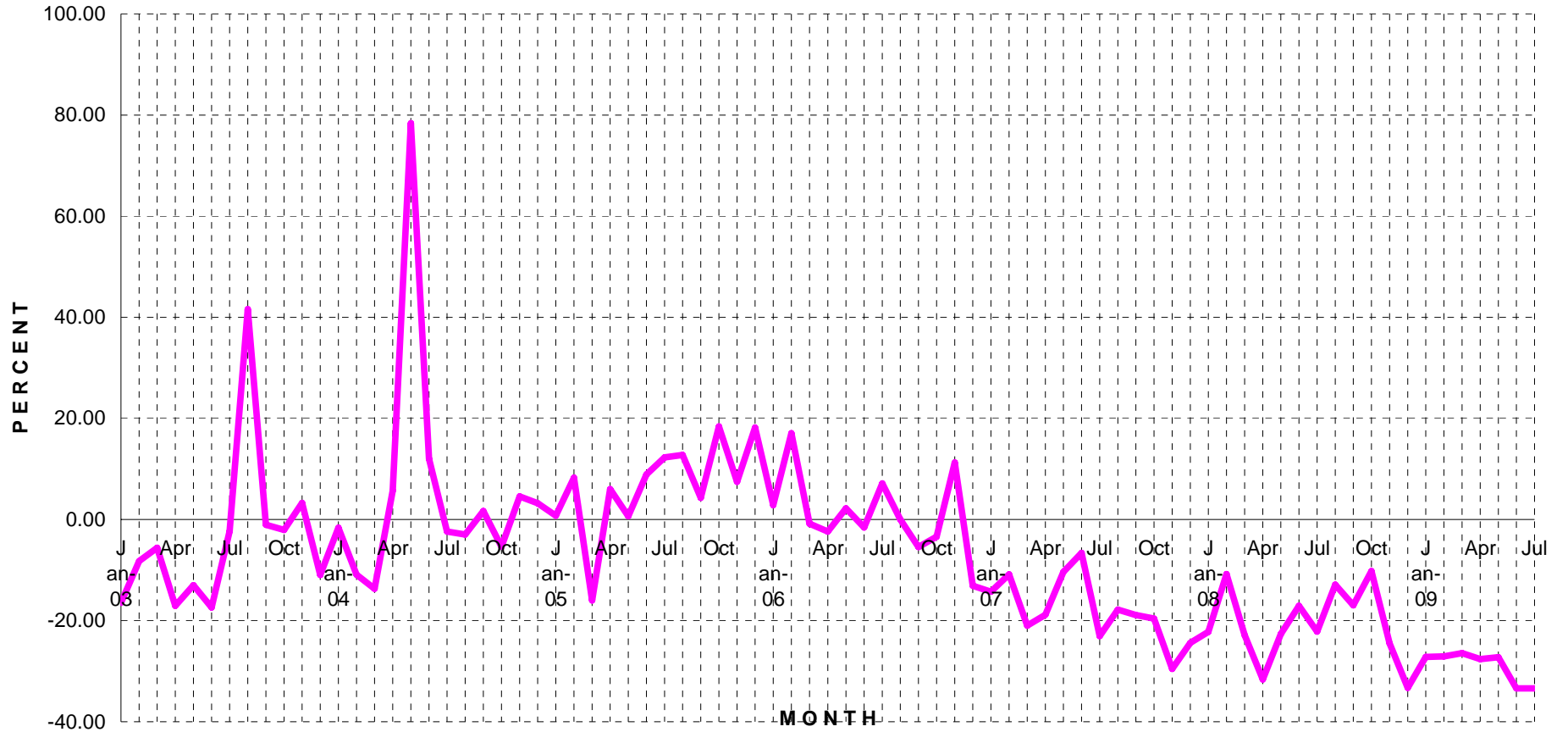


**DIVISION OF ENGINEERING SERVICES - EXECUTIVE SUMMARY
 LOW BID VS ENGINEER'S ESTIMATE
 NUMBER OF PROJECTS & AVERAGE NUMBER OF BIDDERS
 94/95 STATE FY THRU 09/10**



■ Engineer's Estimate
 ■ Low Bid
 ■ Number of Projects
 — Average Number of Bidders

**DIVISION OF ENGINEERING SERVICES - EXECUTIVE SUMMARY
PERCENTAGE DIFFERENCE BETWEEN LOW BID (Shown in red)
AND ENGINEER'S ESTIMATE
JANUARY 2003 THRU JULY 2009**



DIVISION OF ENGINEERING SERVICES - EXECUTIVE SUMMARY
LOW BID VS ENGINEER'S ESTIMATE
AVERAGE NUMBER OF BIDDERS
JANUARY 2003 THRU JULY 2009

