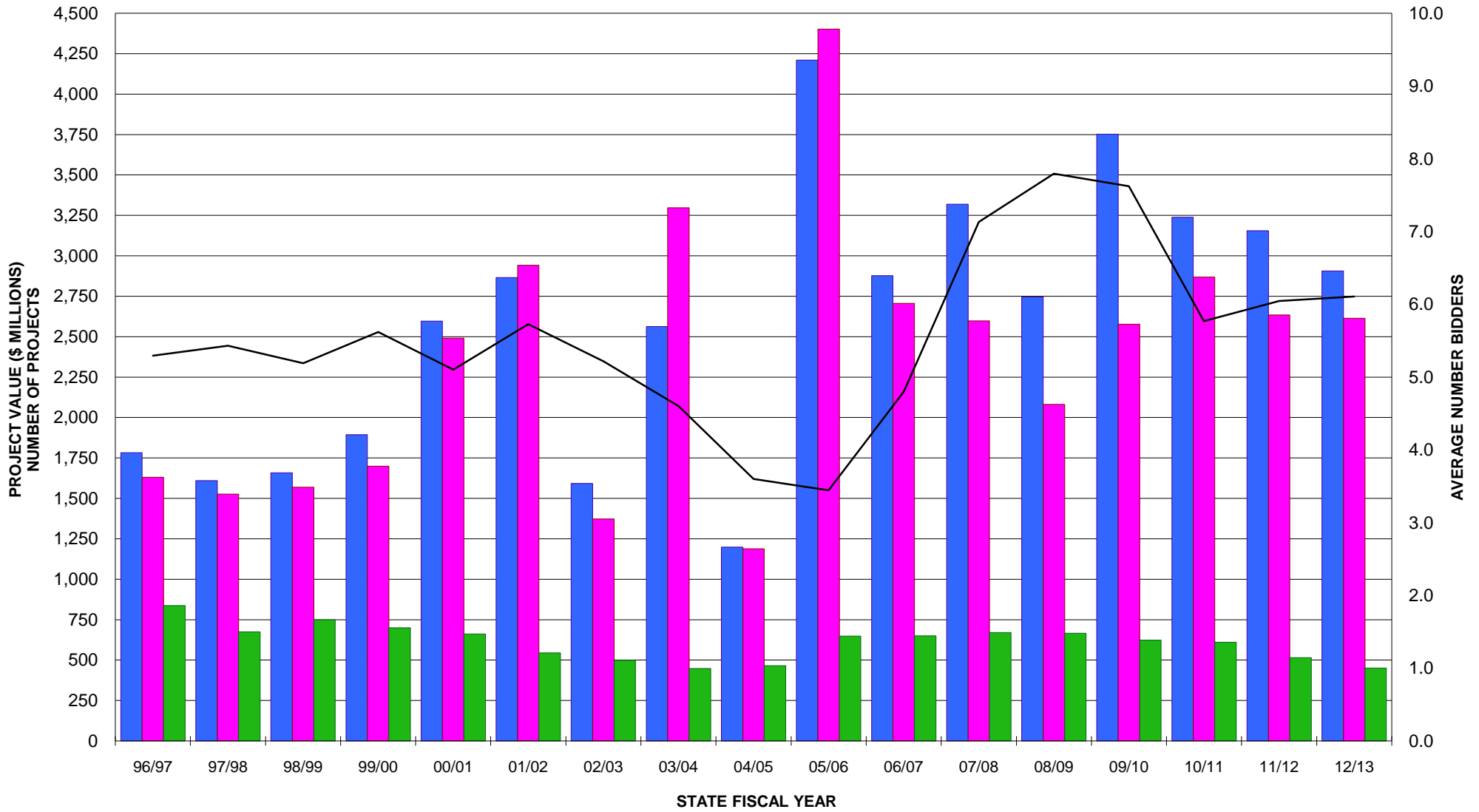
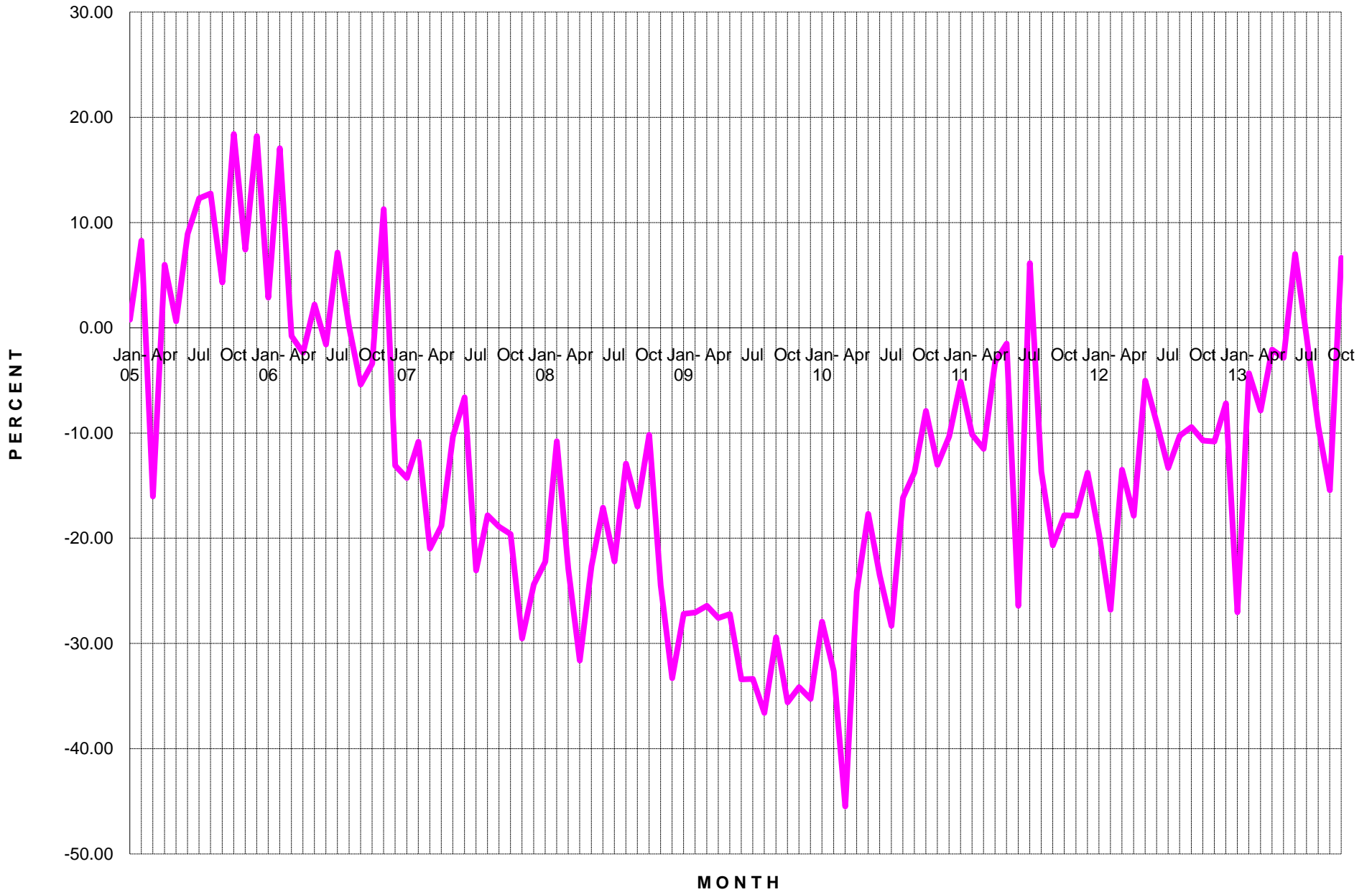


**DIVISION OF ENGINEERING SERVICES - EXECUTIVE SUMMARY**  
**LOW BID VS ENGINEER'S ESTIMATE**  
**NUMBER OF PROJECTS & AVERAGE NUMBER OF BIDDERS**  
**96/97 STATE FY THRU 13/14**



■ Engineer's Estimate   
 ■ Low Bid   
 ■ Number of Projects   
 — Average Number of Bidders

**DIVISION OF ENGINEERING SERVICES - EXECUTIVE SUMMARY  
PERCENTAGE DIFFERENCE BETWEEN LOW BID (Shown in red)  
AND ENGINEER'S ESTIMATE  
JANUARY 2005 THRU OCTOBER 2013**



**DIVISION OF ENGINEERING SERVICES - EXECUTIVE SUMMARY  
 LOW BID VS ENGINEER'S ESTIMATE  
 AVERAGE NUMBER OF BIDDERS  
 JANUARY 2005 THRU OCTOBER 2013**

