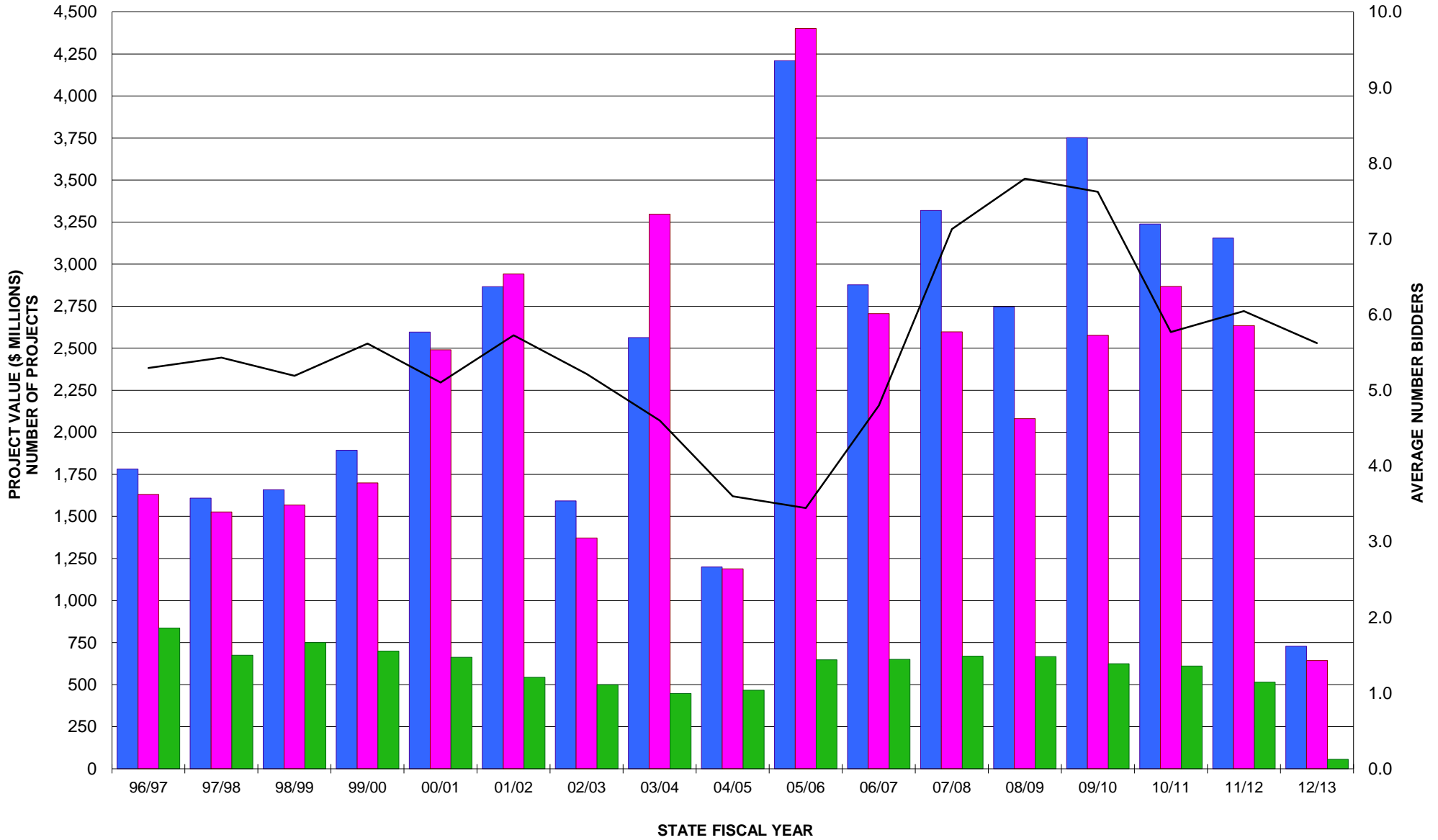
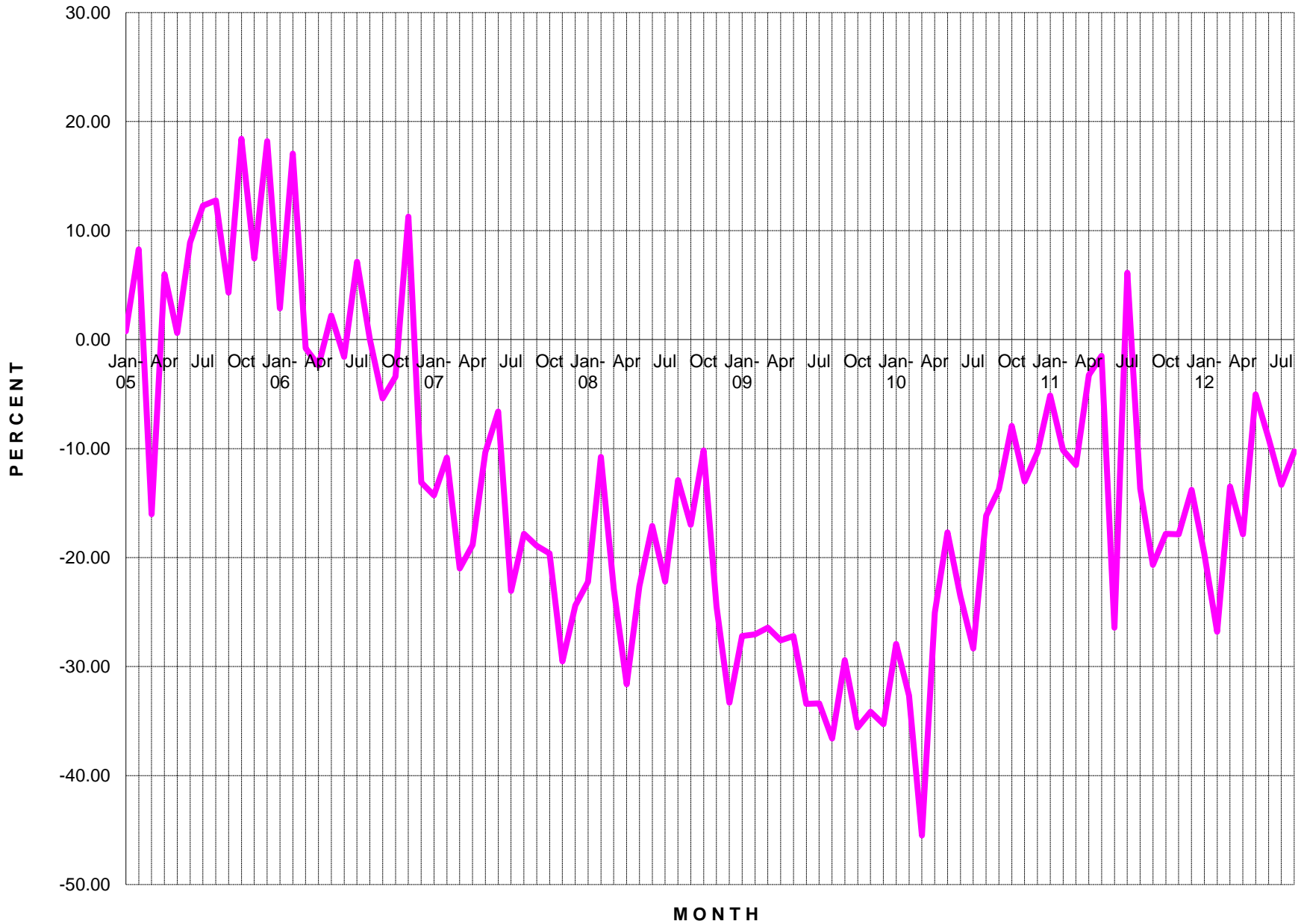


**DIVISION OF ENGINEERING SERVICES - EXECUTIVE SUMMARY
 LOW BID VS ENGINEER'S ESTIMATE
 NUMBER OF PROJECTS & AVERAGE NUMBER OF BIDDERS
 96/97 STATE FY THRU 12/13**



■ Engineer's Estimate
 ■ Low Bid
 ■ Number of Projects
 — Average Number of Bidders

**DIVISION OF ENGINEERING SERVICES - EXECUTIVE SUMMARY
PERCENTAGE DIFFERENCE BETWEEN LOW BID (Shown in red)
AND ENGINEER'S ESTIMATE
JANUARY 2005 THRU AUGUST 2012**



**DIVISION OF ENGINEERING SERVICES - EXECUTIVE SUMMARY
 LOW BID VS ENGINEER'S ESTIMATE
 AVERAGE NUMBER OF BIDDERS
 JANUARY 2005 THRU AUGUST 2012**

