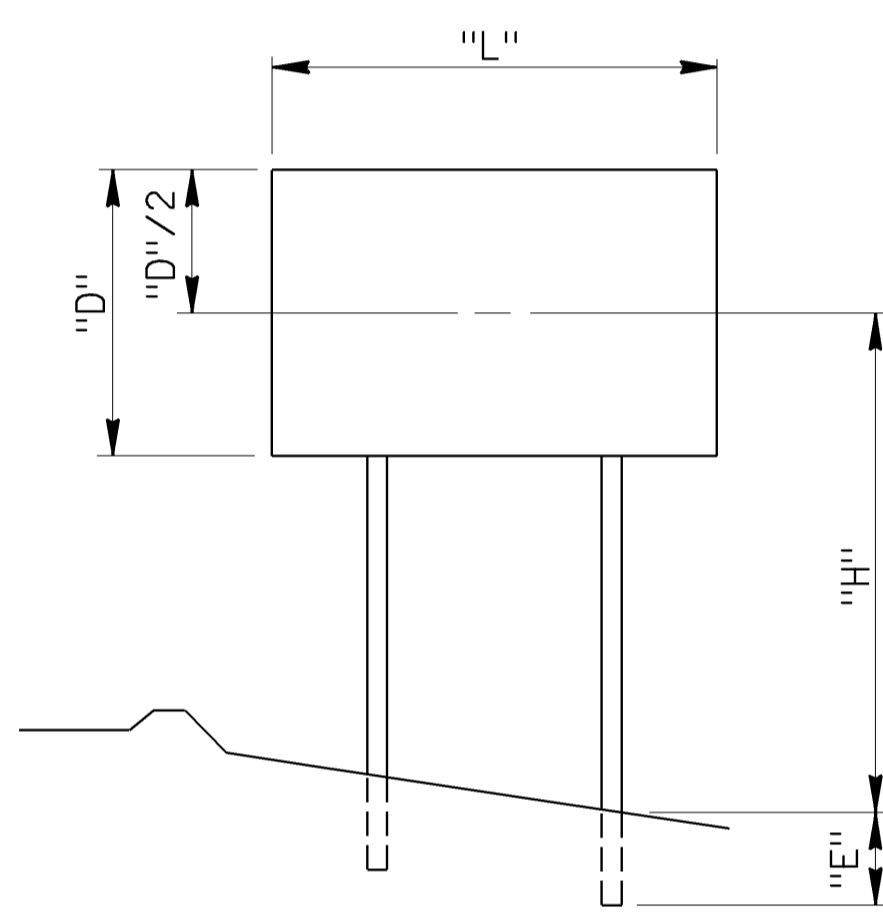
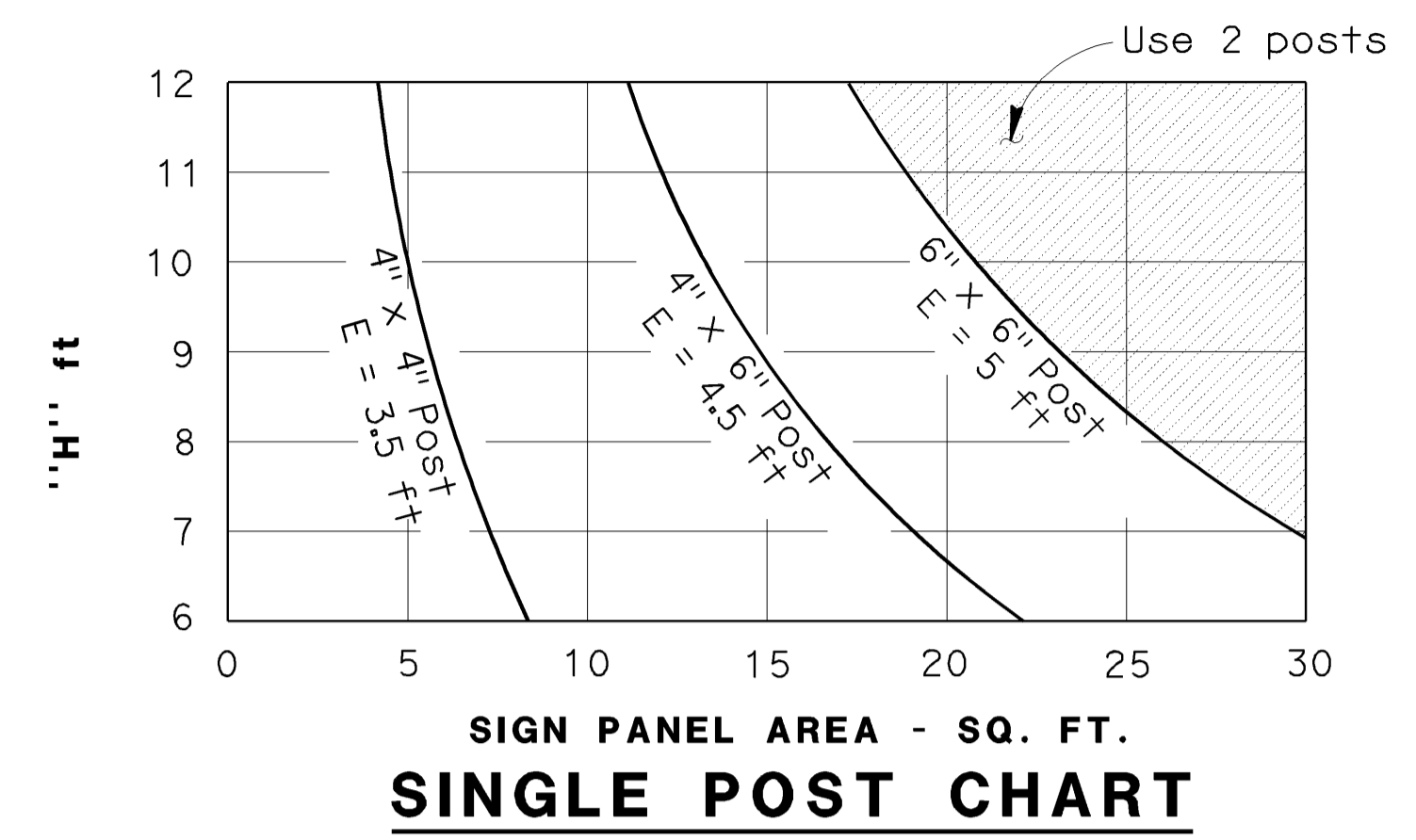
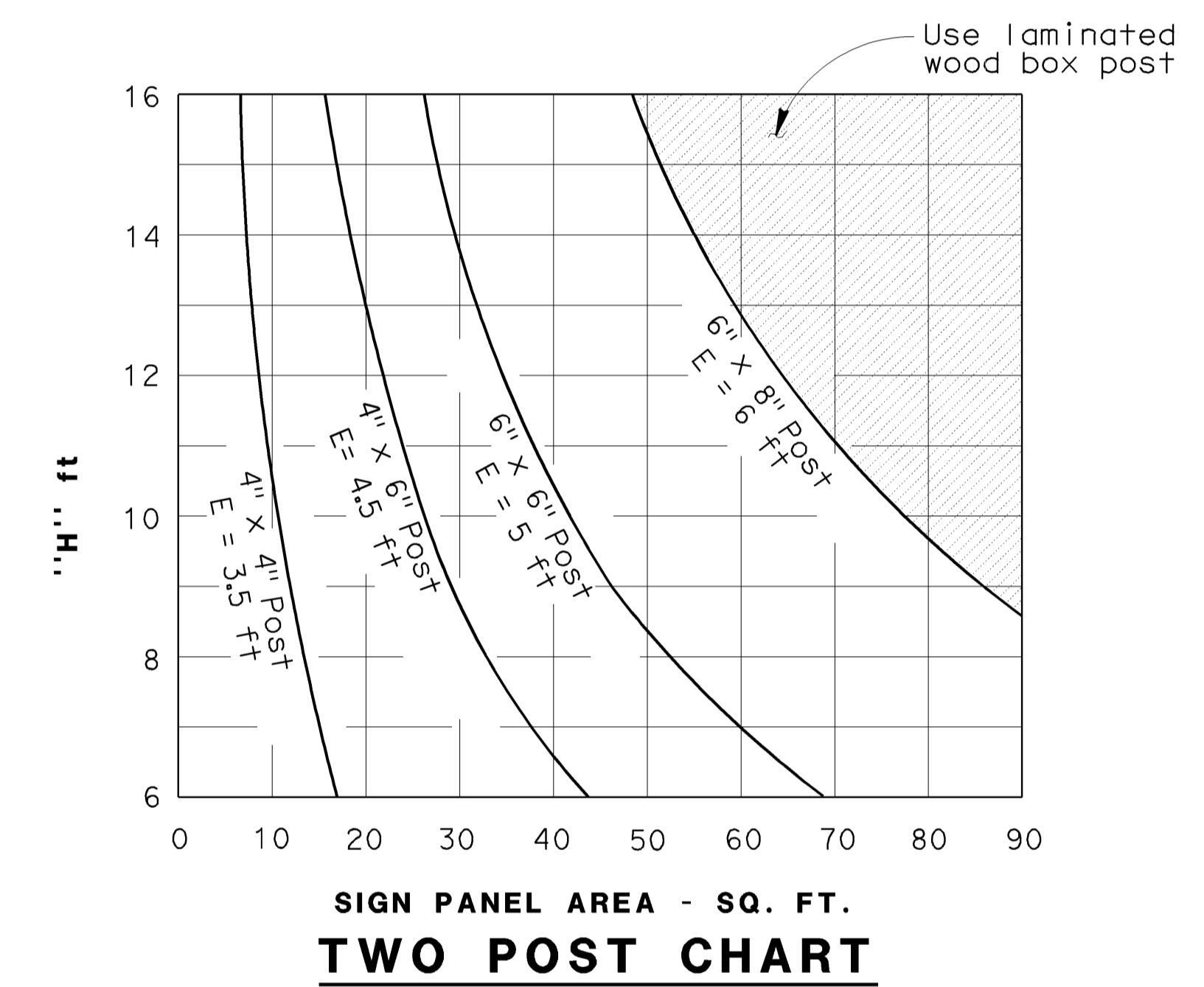


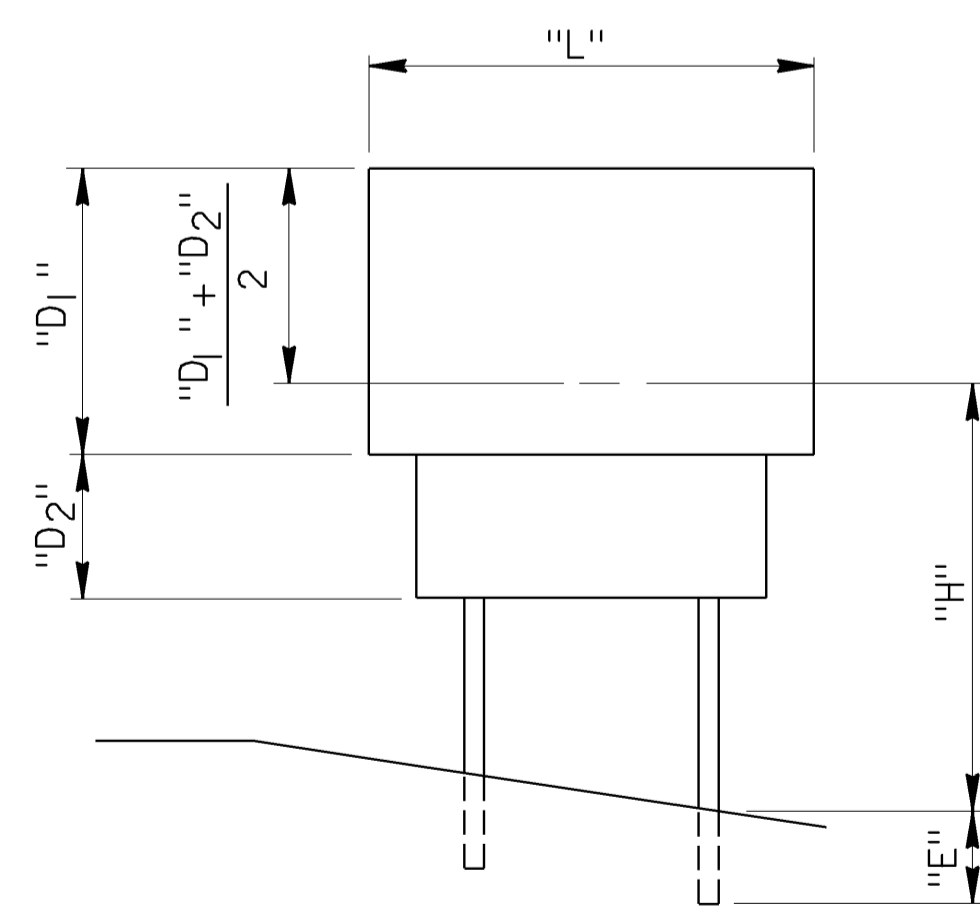
**SINGLE POST**



**TWO POST**



Note: Charts show nominal wood dimensions.



**TWO POST**

**1. WIND LOAD:**

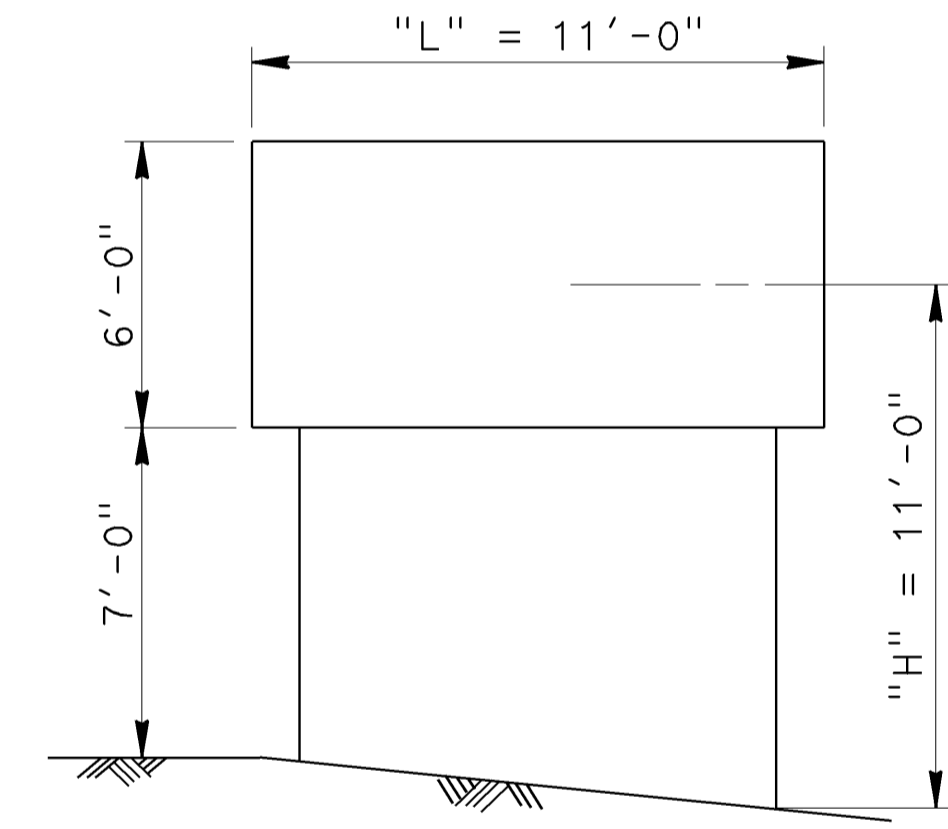
60 mph ( 1994 AASHTO )

**2. ALLOWABLE STRESSES:**

4" x 4" Posts 900 psi  
 4" x 6" and larger posts 960 psi

Allowable stresses are increased 40% for wind loads.

**3. EXAMPLE:**



Area = 6' x 11' = 66 ft<sup>2</sup>  
 H = 11'  
 Use 6" x 8" post, E = 6'

**THIS SHEET NOT A PART OF CONTRACT PLANS**

**ROADSIDE SIGNS**

**WOOD POST SELECTION CHARTS**