

Caltrans District 9

**Average Annual Daily Traffic (AADT) Count Data
for US 395, US 6, SR 14 & SR 58
1992 to 2015 (January – December)**

and

**Truck AADT for US 395, US 6 & SR 58
2006 to 2015 (January – December)**

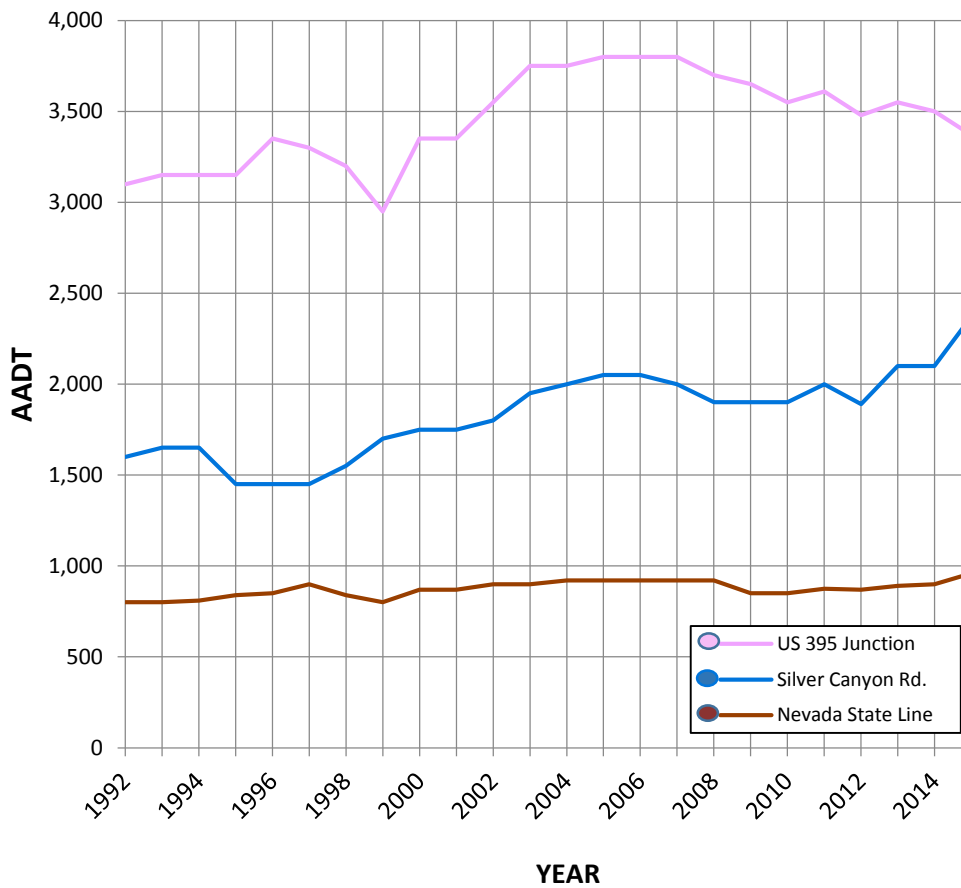


PREPARED BY: CT 09 - SYSTEM PLANNING

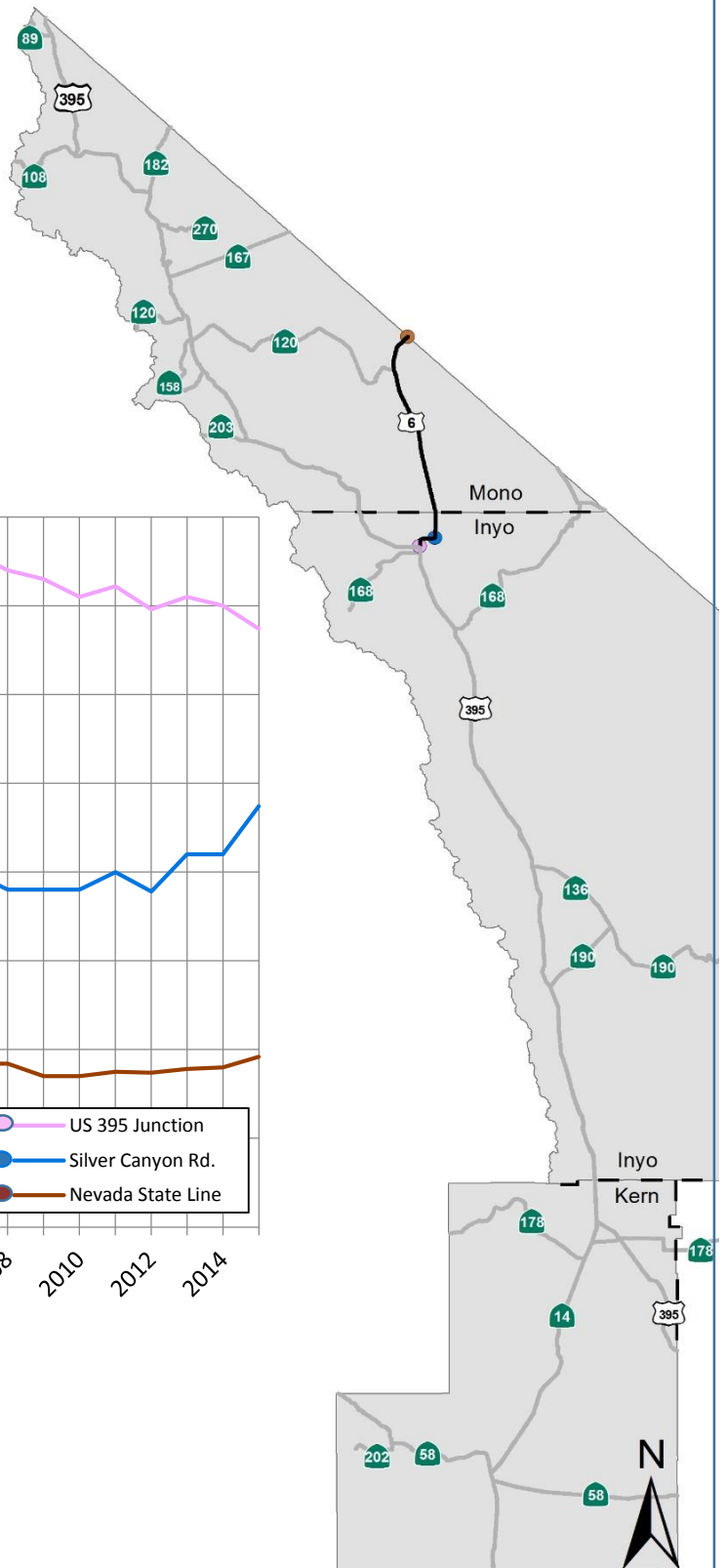
Please Consider the Environment Before Printing This Report!

AADT for US 6, Inyo and Mono Counties 1992 to 2015

Average Annual Daily Traffic – the total traffic volume for the year divided by 365 days. Counts are taken at designated stations by inductive loop detectors.

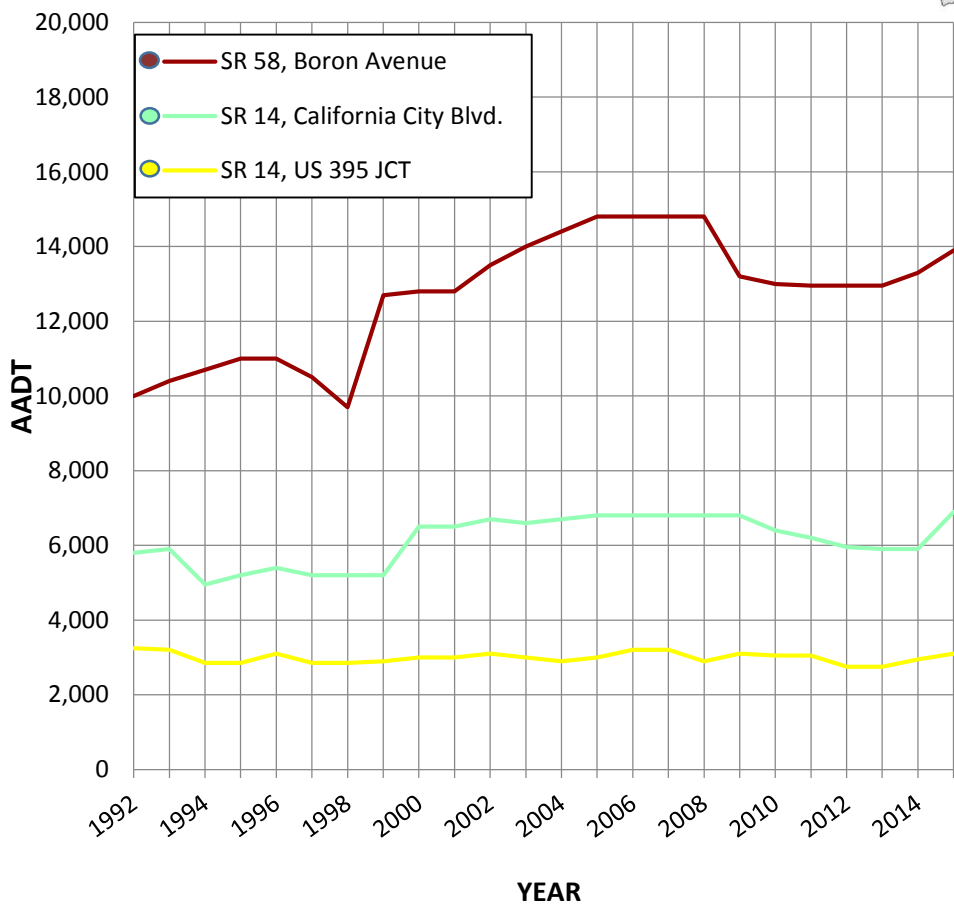


● Count Station
 — US 6

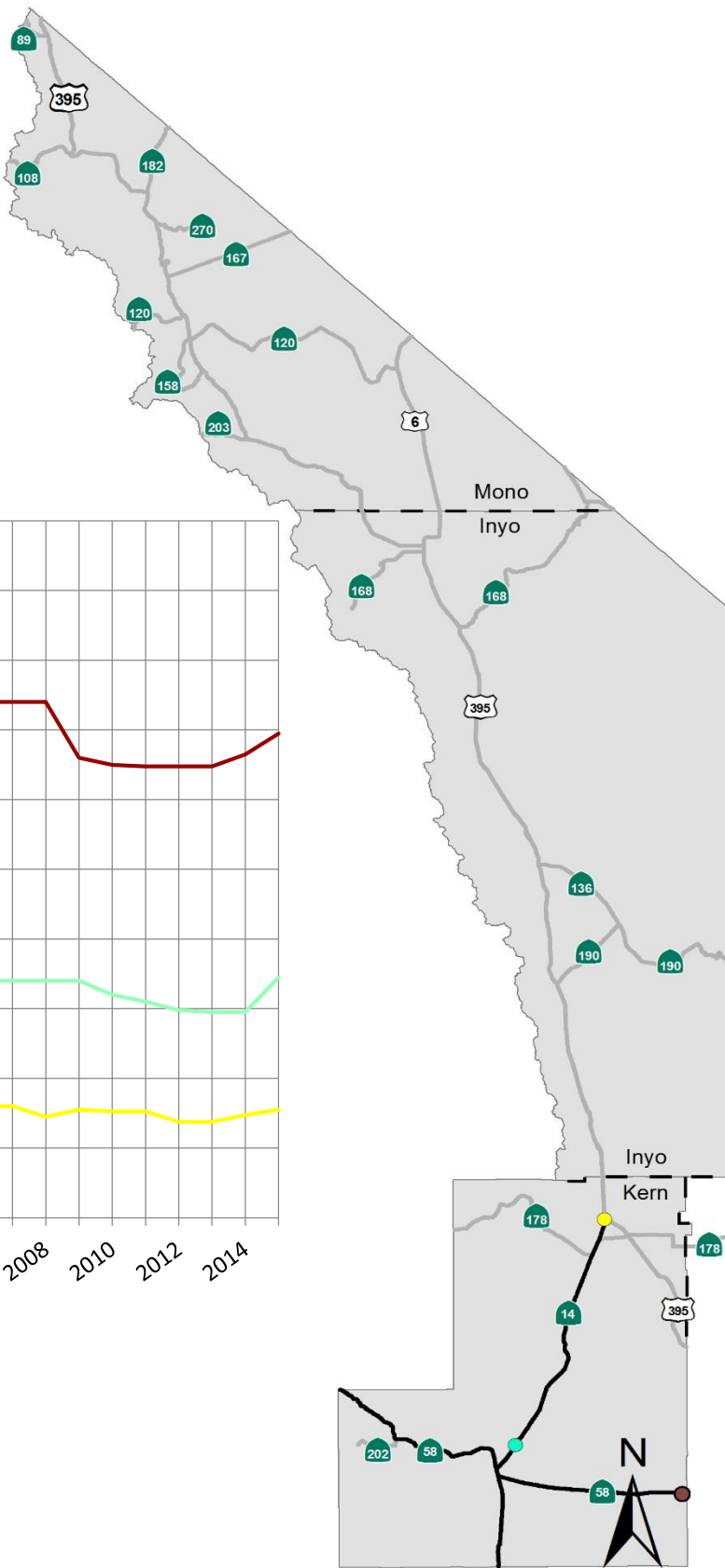


AADT for SR 14 & SR 58, Kern County 1992 to 2015

Average Annual Daily Traffic – the total traffic volume for the year divided by 365 days. Counts are taken at designated stations by inductive loop detectors.



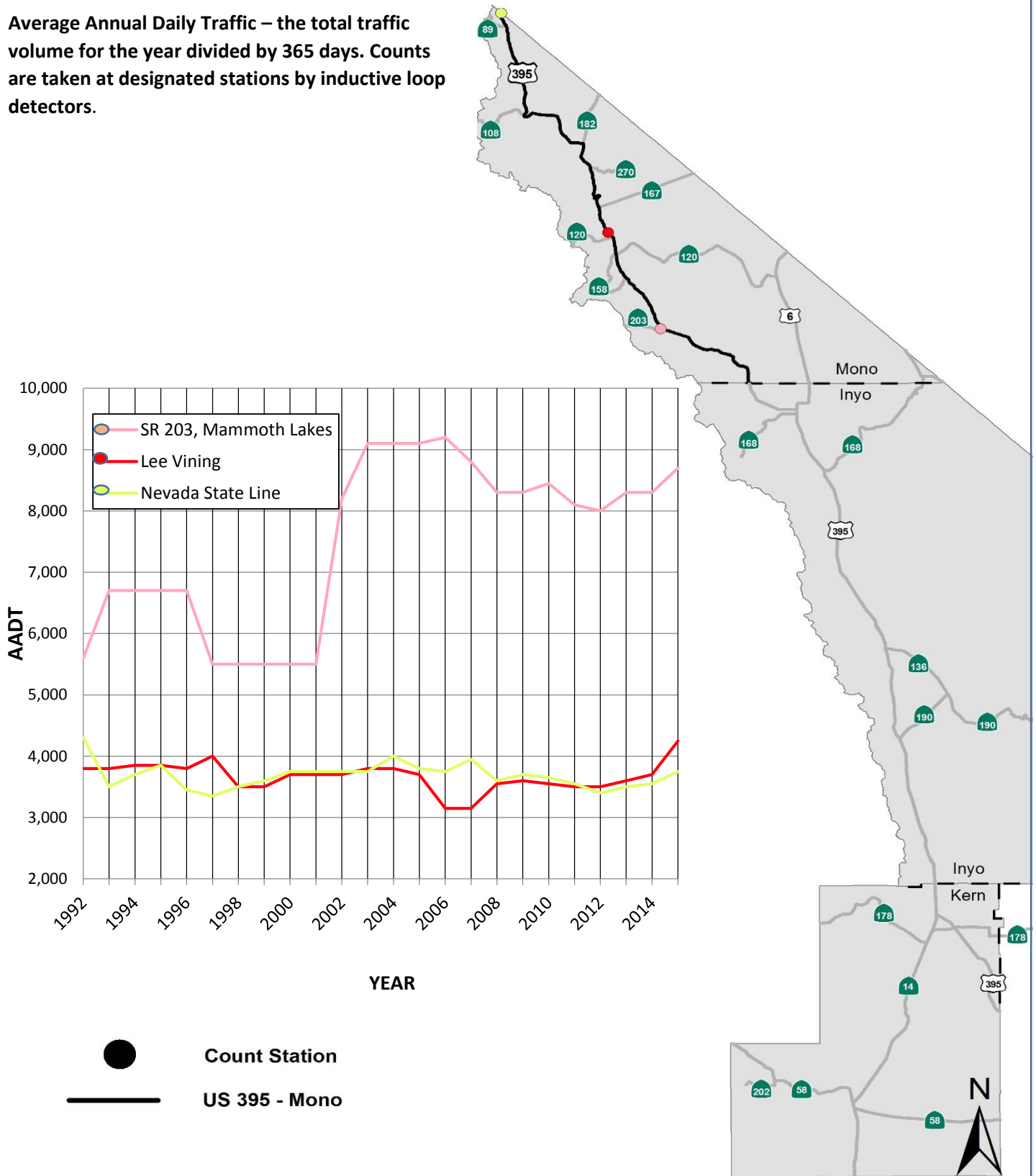
● Count Station
 — SR 14 & SR 58



AADT for US 395, Mono County

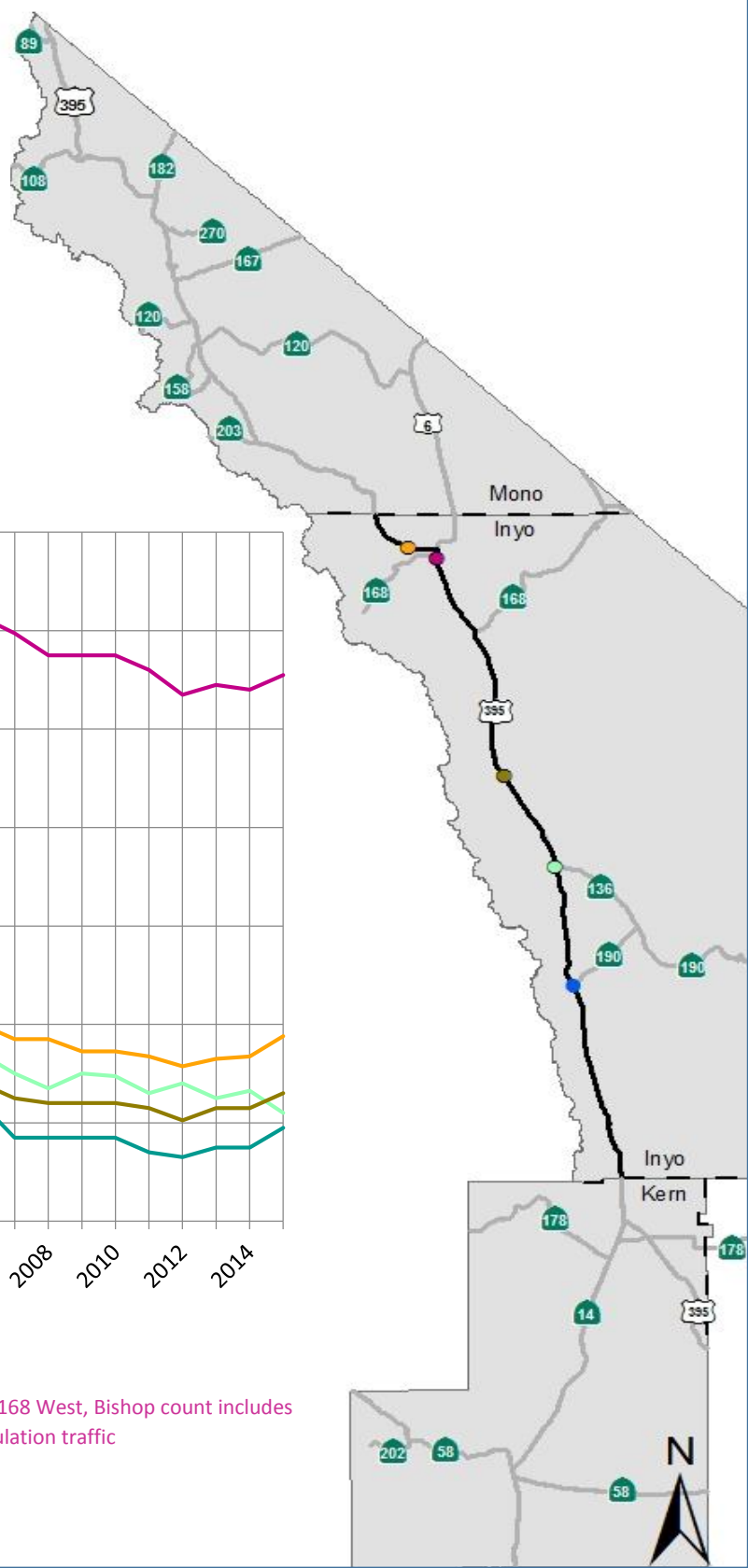
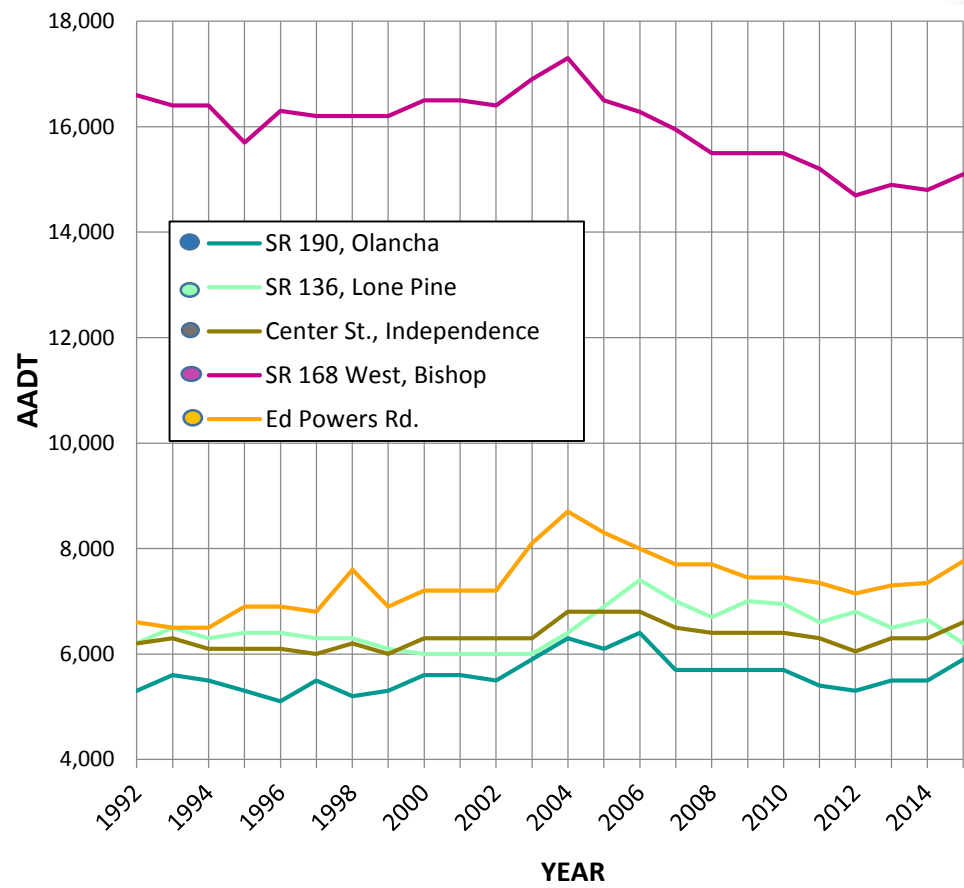
1992 to 2015

Average Annual Daily Traffic – the total traffic volume for the year divided by 365 days. Counts are taken at designated stations by inductive loop detectors.



AADT for US 395, Inyo County 1992 to 2015

Average Annual Daily Traffic – the total traffic volume for the year divided by 365 days. Counts are taken at designated stations by inductive loop detectors.



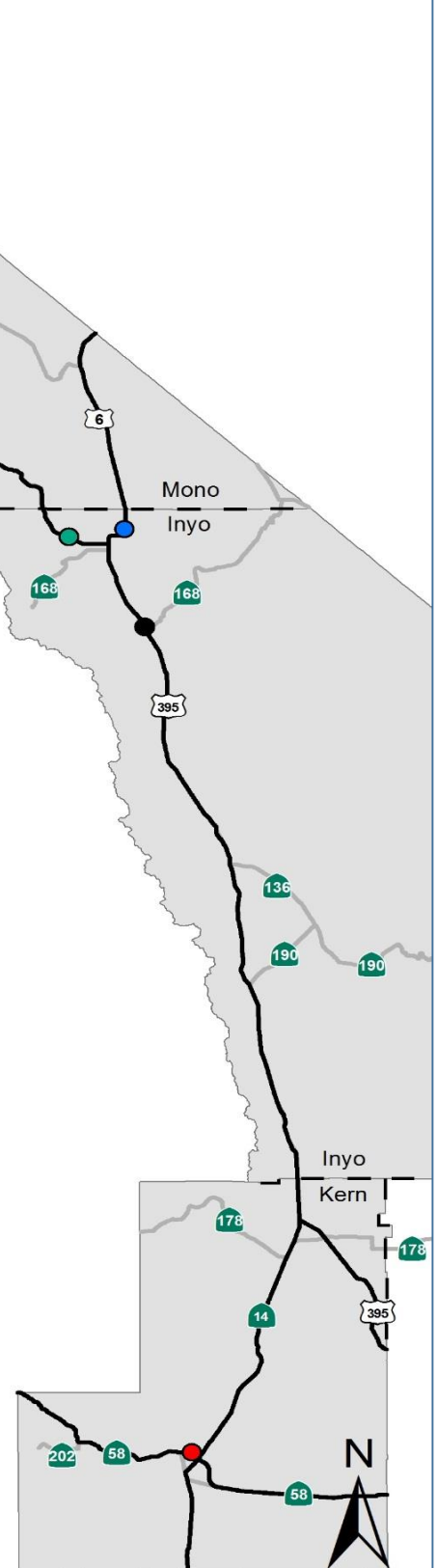
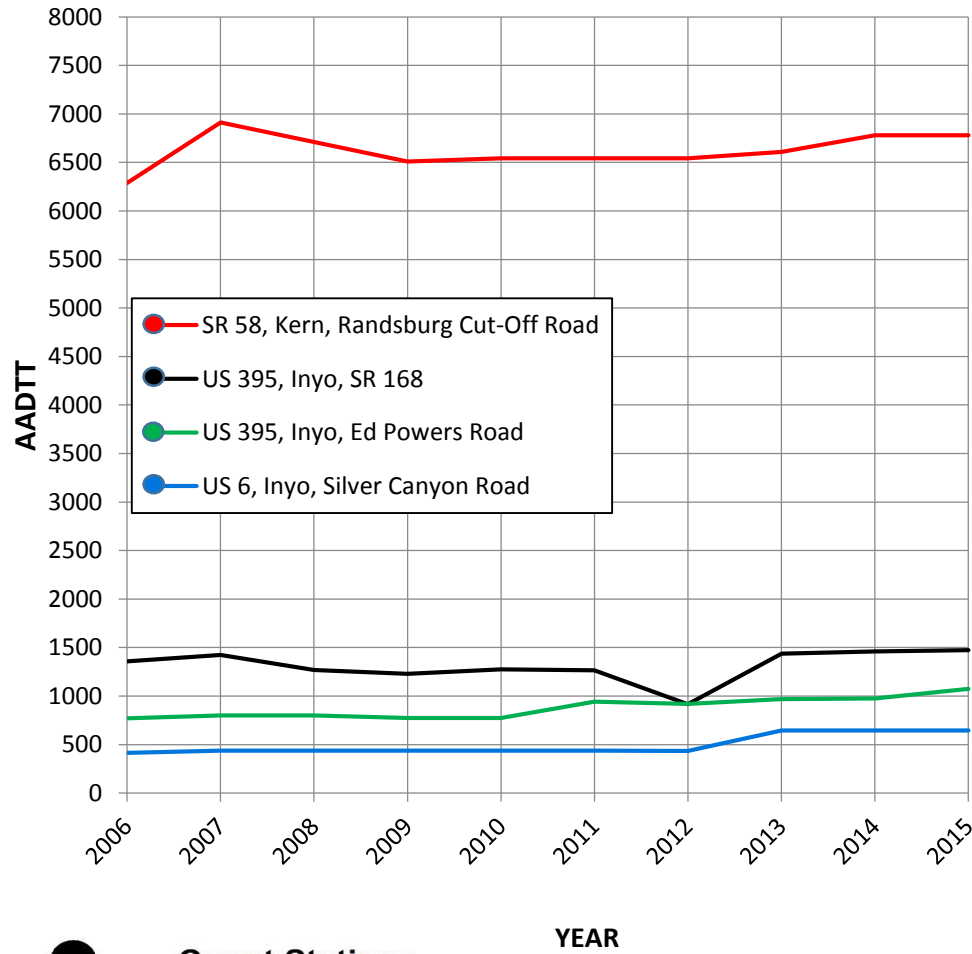
● **Count Station**
 — **US 395 - Inyo**

Note: SR 168 West, Bishop count includes local circulation traffic



Truck AADT for US 395, US 6 & SR 58 2006 to 2015

Truck Average Annual Daily Traffic – the total truck traffic volume for the year divided by 365 days. Counts are taken at designated stations by weigh-in motion devices and Piezoelectric Traffic Sensors.



Note: US 395, Inyo, SR 168 data is incomplete for 2012.