

Dist	COUNTY	ROUTE	POST MILES TOTAL PROJECT	SHEET No.	TOTAL SHEETS

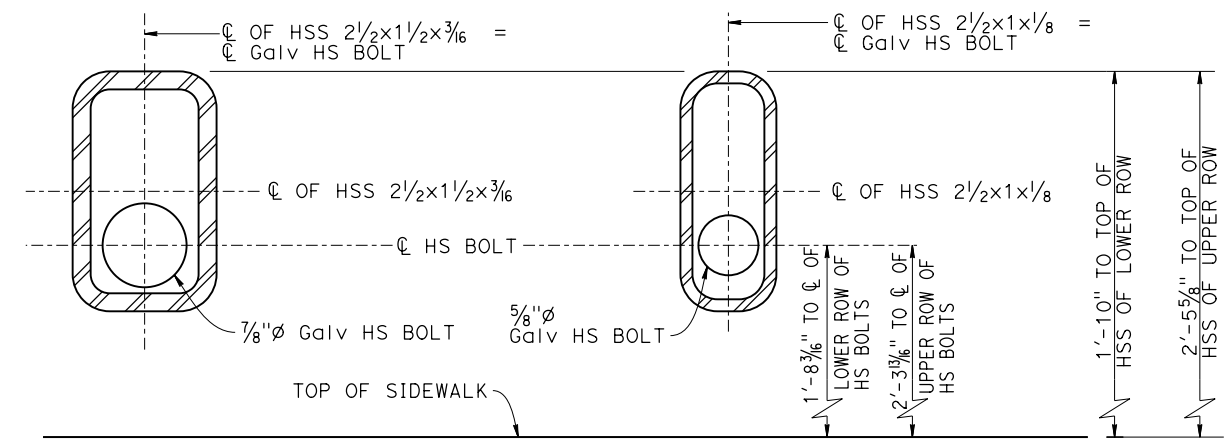
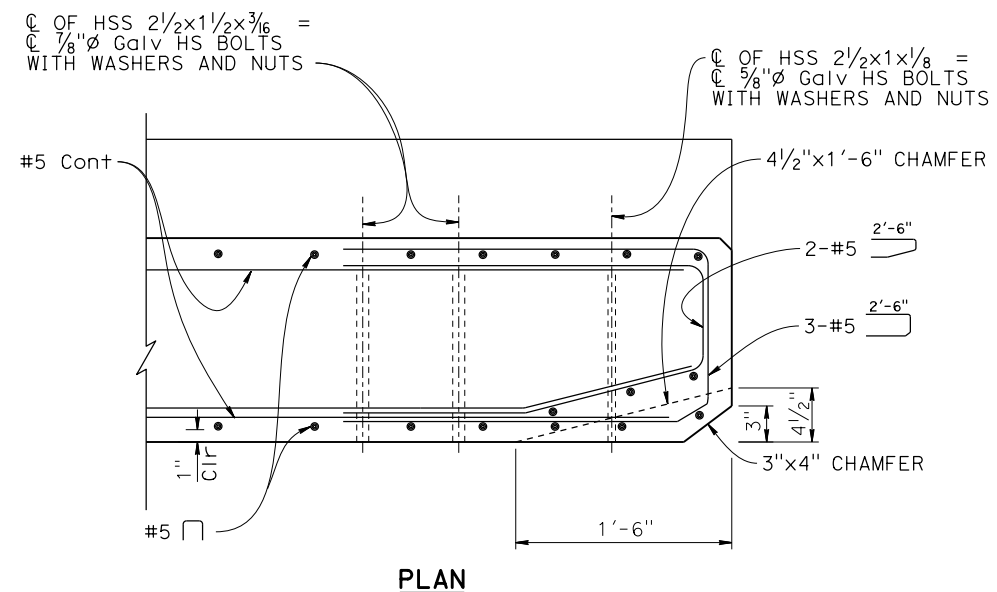
REGISTERED CIVIL ENGINEER	X	DATE
PLANS APPROVAL DATE		

REGISTERED PROFESSIONAL ENGINEER	X
No.	X
Exp.	X
CIVIL	
STATE OF CALIFORNIA	

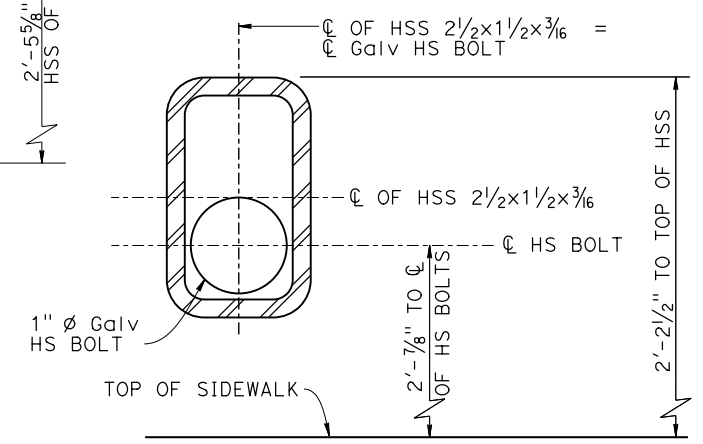
THE STATE OF CALIFORNIA OR ITS OFFICERS OR AGENTS SHALL NOT BE RESPONSIBLE FOR THE ACCURACY OR COMPLETENESS OF SCANNED COPIES OF THIS PLAN SHEET.

THE REGISTERED CIVIL ENGINEER FOR THE PROJECT IS RESPONSIBLE FOR THE SELECTION AND PROPER APPLICATION OF THE COMPONENT DESIGN AND ANY MODIFICATIONS SHOWN.



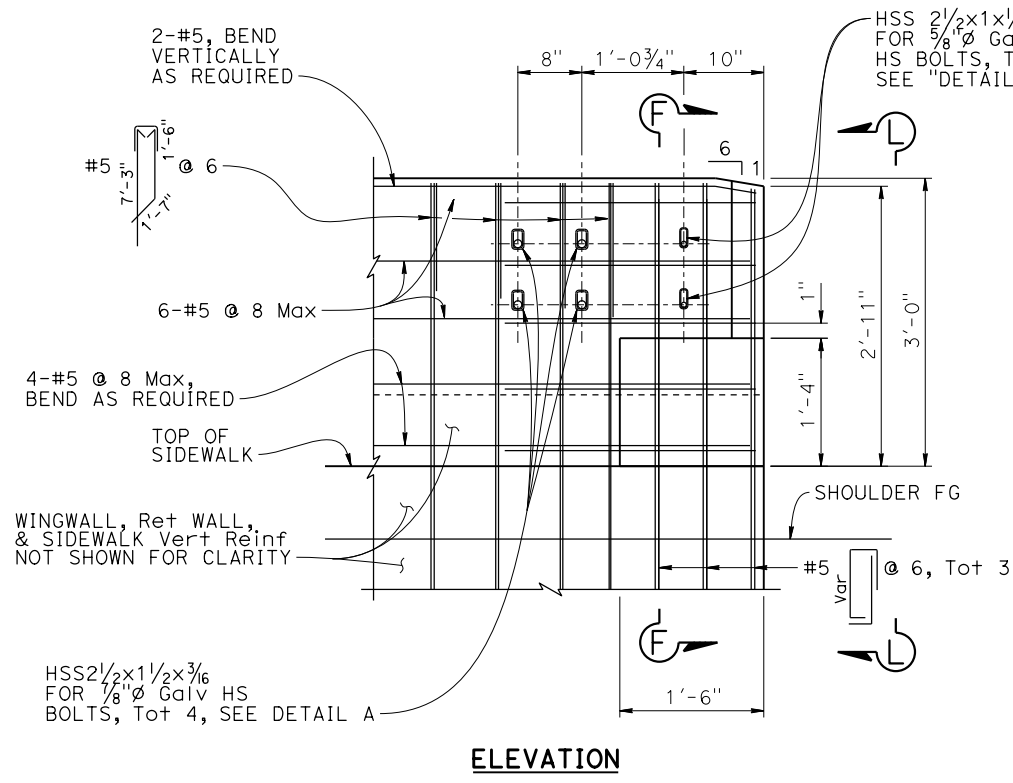
**DETAIL A**                      **DETAIL B**

**APPROACH END BLOCK FORMED HOLES**

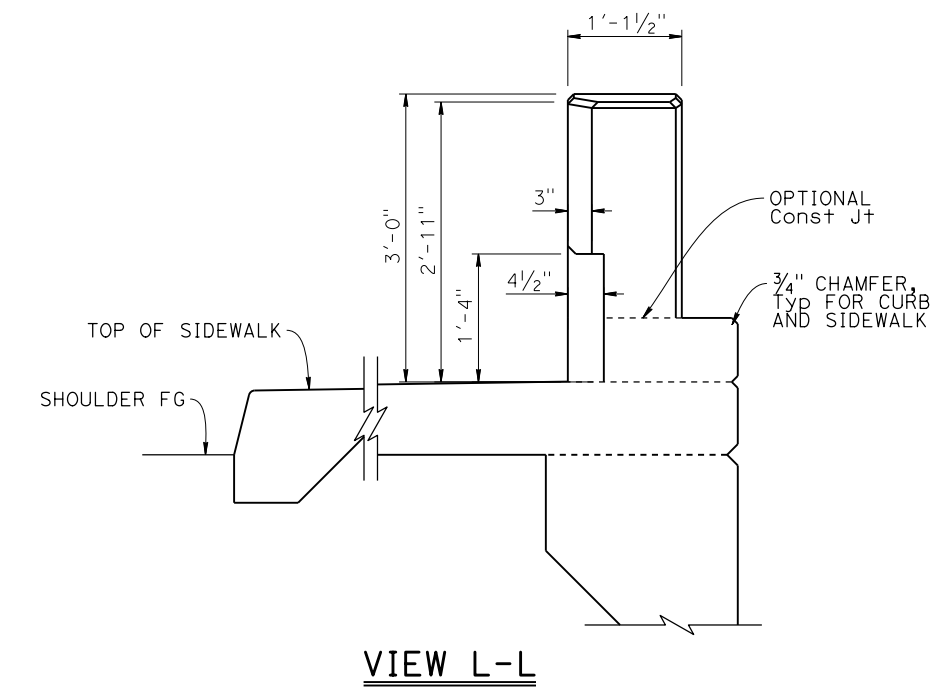
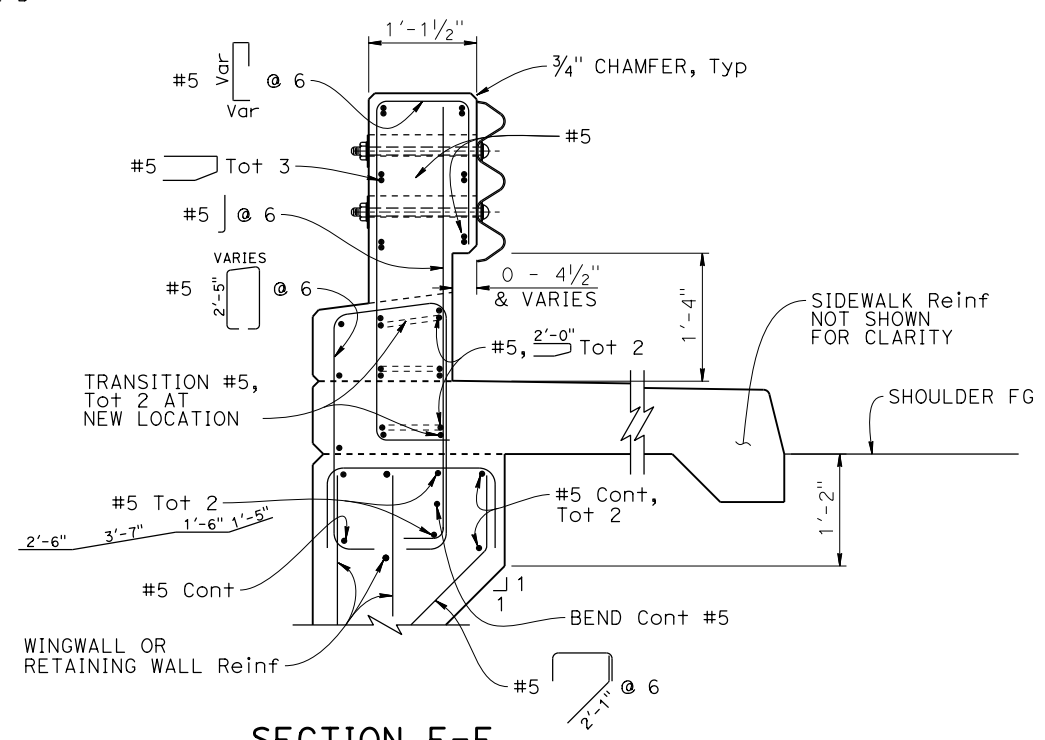


**DEPARTURE END BLOCK FORMED HOLES**

- NOTES:
- Adjust reinforcement as needed to clear HSS section by at least 1" minimum.
  - For typical connection for departure end block to MGS details, see "MGS BRIDGE DEPARTURE CONNECTION DETAIL GG" ON RSP A79B2, and "DETAIL C" on this sheet.



**APPROACH END BLOCK DETAILS**



**NO SCALE**