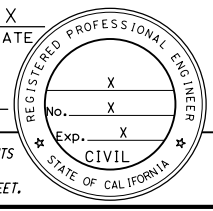
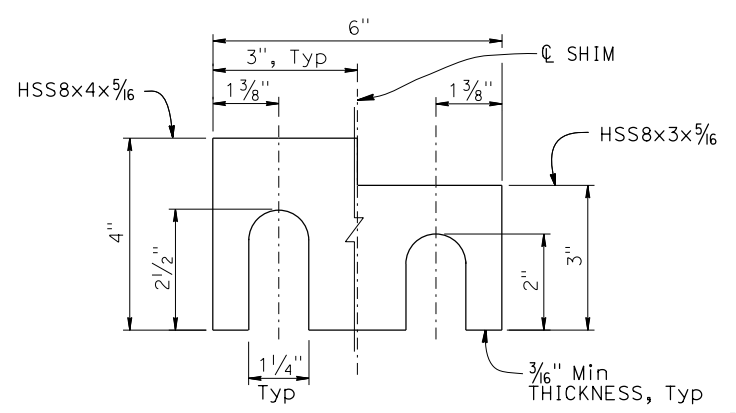


| | | | | | |
|--|--------|-------|--------------------------|-----------|--------------|
| Dist | COUNTY | ROUTE | POST MILES TOTAL PROJECT | SHEET No. | TOTAL SHEETS |
| | | | | | |
| REGISTERED CIVIL ENGINEER | | | X | DATE | |
| PLANS APPROVAL DATE | | | | | |
| THE STATE OF CALIFORNIA OR ITS OFFICERS OR AGENTS SHALL NOT BE RESPONSIBLE FOR THE ACCURACY OR COMPLETENESS OF SCANNED COPIES OF THIS PLAN SHEET. | | | | | |
| THE REGISTERED CIVIL ENGINEER FOR THE PROJECT IS RESPONSIBLE FOR THE SELECTION AND PROPER APPLICATION OF THE COMPONENT DESIGN AND ANY MODIFICATIONS SHOWN. | | | | | |



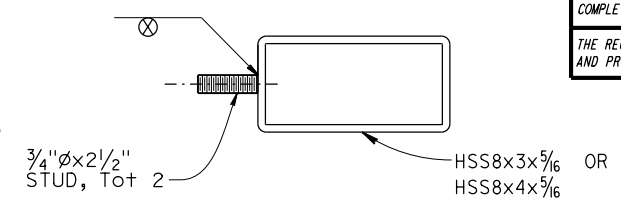
NOTES:

- All horizontal members are parallel to longitudinal profile grade of deck.
- Posts are normal to profile grade of structure.
- Posts are plumb in the transverse cross section to profile grade.
- The alternative welded splice may be used in lieu of the standard splice.
- Minimum two posts are required at approach slab.
- Disk springs must be omitted at end posts next to thrie beam barrier. At this post location, add a total of 8- #8 X 8'-0" bars tied to the #6 bundled bars.
- For parapet shoe details, see "CALIFORNIA ST-70SM SIDE MOUNTED BRIDGE RAIL DETAILS No. 5" sheet.
- For additional approach end block details, see "CALIFORNIA ST-70SM SIDE MOUNTED BRIDGE RAIL DETAILS No. 6" sheet.
- If departure end block is within the Clear Recovery Zone (CRZ, 30 feet for expressways and freeways and 20 feet for conventional highways) of opposing traffic, then use the approach end block at departure end.
- For "SECTION A-A", "SECTION B-B", and "SECTION C-C", see "CALIFORNIA ST-70SM SIDE MOUNTED BRIDGE RAIL DETAILS No. 2".



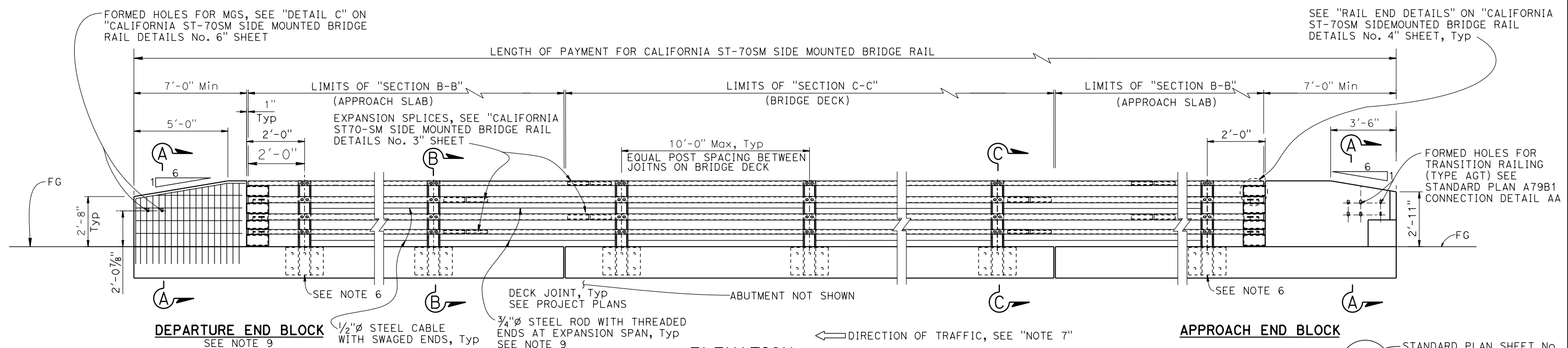
SHIM DETAIL

NOTE:
Shim as needed at HSS rail connections to posts.

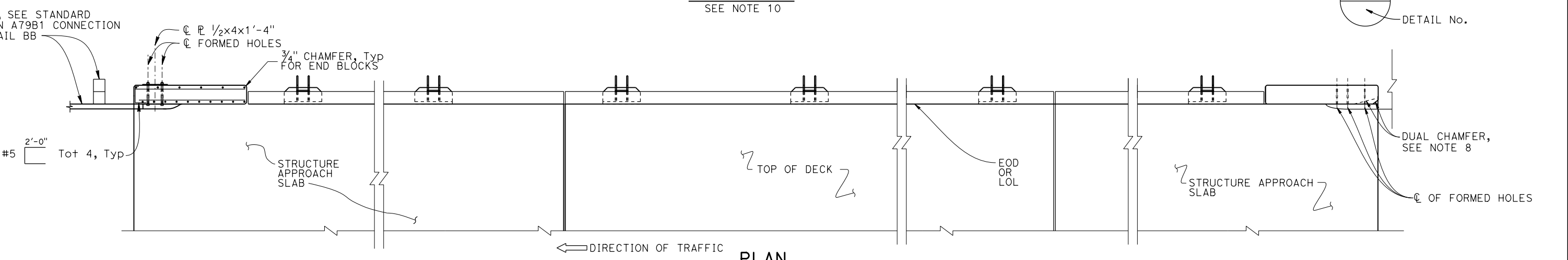


RAIL SECTION AT POST

LEGEND:
⊗ STUD WELD



ELEVATION
SEE NOTE 10



PLAN

NO SCALE

| | | | | | | | | | | | |
|-------------------------|-----------------------------|---|--|--|--|---------|---|---|---|----------------|-----------------|
| BRIDGE STANDARD DETAILS | | | STATE OF CALIFORNIA DEPARTMENT OF TRANSPORTATION | | DIVISION OF ENGINEERING SERVICES | | BRIDGE No. XX-XXXX POST MILE X.X | | X CALIFORNIA ST-70SM SIDE MOUNTED BRIDGE RAIL DETAILS No. 1 | | |
| x16-115-1 FILE NO. | April 2024 APPROVAL DATE | The components of the Bridge Standard Details have been prepared under the responsible charge of the Technical Owner, a registered civil engineer in the State of California. | DATE PLOTTED => 22-APR-2024 FILE => x16-115-1.dgn | TIME PLOTTED => 13:48 USERNAME => s155182 | ORIGINAL SCALE IN INCHES FOR REDUCED PLANS | 0 1 2 3 | UNIT: XXXX PROJECT NUMBER & PHASE: XXXXXXXXXX1 | COUNTY/ROUTE/ZONE: XXX/XXX/X CONTRACT No.: XX-XXXXX4 | DISREGARD PRINTS BEARING EARLIER REVISION DATES | REVISION DATES | SHEET OF X X |