

PART 1 GENERAL

CHAPTER 1A. GENERAL

Section 1A.01 Purpose of Traffic Control Devices

Support:

01 The purpose of traffic control devices, as well as the principles for their use, is to promote highway safety and efficiency by providing for the orderly movement of all road users on streets, highways, bikeways, and private roads open to public travel (see definition in Section 1A.13) throughout the Nation.

02 Traffic control devices notify road users of regulations and provide warning and guidance needed for the uniform and efficient operation of all elements of the traffic stream in a manner intended to minimize the occurrences of crashes.

Standard:

03 **Traffic control devices or their supports shall not bear any advertising message or any other message that is not related to traffic control.**

Support:

04 Tourist-oriented directional signs and Specific Service signs are not considered advertising; rather, they are classified as motorist service signs.

Section 1A.02 Principles of Traffic Control Devices

Support:

01 This Manual contains the basic principles that govern the design and use of traffic control devices for all streets, highways, bikeways, and private roads open to public travel (see definition in Section 1A.13) regardless of type or class or the public agency, official, or owner having jurisdiction. This Manual's text specifies the restriction on the use of a device if it is intended for limited application or for a specific system. It is important that these principles be given primary consideration in the selection and application of each device.

Guidance:

02 *To be effective, a traffic control device should meet five basic requirements:*

A. Fulfill a need;

B. Command attention;

C. Convey a clear, simple meaning;

D. Command respect from road users; and

E. Give adequate time for proper response.

03 *Design, placement, operation, maintenance, and uniformity are aspects that should be carefully considered by the engineer in order to maximize the ability of a traffic control device to meet the five requirements listed in the previous paragraph. Vehicle speed, geometrics and other relevant factors should be carefully considered as ~~an~~ elements that governs the design, operation, placement, and location of various traffic control devices.*

Support:

04 The definition of the word "speed" varies depending on its use. The definitions of specific speed terms are contained in Section 1A.13.

Guidance:

05 *The actions required of road users to obey regulatory devices should be specified by State statute, or in cases not covered by State statute, by local ordinance or resolution. Such statutes, ordinances, and resolutions should be consistent with the "Uniform Vehicle Code" and California Vehicle Code (CVC) (see Section 1A.11).*

06 *The proper use of traffic control devices should provide the reasonable and prudent road user with the information necessary to efficiently and lawfully use the streets, highways, pedestrian facilities, and bikeways.*

Support:

07 Uniformity of the meaning of traffic control devices is vital to their effectiveness. The meanings ascribed to devices in this Manual are in general accord with the publications mentioned in Section 1A.11.

Section 1A.03 Design of Traffic Control Devices

Guidance:

01 *Devices should be designed so that features such as size, shape, color, composition, lighting or retroreflection, and contrast are combined to draw attention to the devices; that size, shape, color, and simplicity of message combine to produce a clear meaning; that legibility and size combine with placement to permit adequate time for response; and that uniformity, size, legibility, and reasonableness of the message combine to command respect.*

02 *Aspects of a device's standard design should be modified only if there is a demonstrated need.*

Support:

03 An example of modifying a device's design would be to modify the Combination Horizontal Alignment/Intersection (W1-10) sign to show intersecting side roads on both sides rather than on just one side of the major road within the curve.

Option:

04 With the exception of symbols and colors, minor modifications in the specific design elements of a device may be made provided the essential appearance characteristics are preserved.

Section 1A.04 Placement and Operation of Traffic Control Devices

Guidance:

01 *Placement of a traffic control device should be within the road user's view so that adequate visibility is provided. To aid in conveying the proper meaning, the traffic control device should be appropriately positioned with respect to the location, object, or situation to which it applies. The location and legibility of the traffic control device should be such that a road user has adequate time to make the proper response in both day and night conditions.*

02 *Traffic control devices should be placed and operated in a uniform and consistent manner.*

03 *Unnecessary traffic control devices should be removed. The fact that a device is in good physical condition should not be a basis for deferring needed removal or change.*

04 *Traffic control devices, which are used on a part-time basis, should be in operation only during the time periods that they are required.*

Section 1A.05 Maintenance of Traffic Control Devices

Guidance:

01 *Functional maintenance of traffic control devices should be used to determine if certain devices need to be changed to meet current traffic conditions.*

02 *Physical maintenance of traffic control devices should be performed to retain the legibility and visibility of the device, and to retain the proper functioning of the device.*

Support:

03 Clean, legible, properly mounted devices in good working condition command the respect of road users.

Section 1A.06 Uniformity of Traffic Control Devices

Support:

01 Uniformity of devices simplifies the task of the road user because it aids in recognition and understanding, thereby reducing perception/reaction time. Uniformity assists road users, law enforcement officers, and traffic courts by giving everyone the same interpretation. Uniformity assists public highway officials through efficiency in manufacture, installation, maintenance, and administration. Uniformity means treating similar situations in a similar way. The use of uniform traffic control devices does not, in itself, constitute uniformity. A standard device used where it is not appropriate is as objectionable as a non-standard device; in fact, this might be worse, because such misuse might result in disrespect at those locations where the device is needed and appropriate.

Standard:

02 Any given device for the control of traffic shall have the same meaning and require the same action on the part of motorists regardless of where it is encountered.

Section 1A.07 Responsibility for Traffic Control Devices

Standard:

01 The responsibility for the design, placement, operation, maintenance, and uniformity of traffic control devices shall rest with the public agency or the official having jurisdiction, or, in the case of private roads open to public travel (see definition in Section 1A.13), with the private owner or private official having jurisdiction. 23 CFR 655.603 adopts the MUTCD as the national standard for all traffic control devices installed on any street, highway, bikeway, or private road open to public travel (see definition in Section 1A.13). When a State or other Federal agency manual or supplement is required, that manual or supplement shall be in substantial conformance with the National MUTCD.

01a On State highways, the California MUTCD shall not supersede Caltrans' Standard Plans, Standard Specifications or the Special Provisions publications but all Standard statements of the California MUTCD shall be met. On State highways, whenever there is a discrepancy between the specifications and requirements contained in the California MUTCD, and those contained in Caltrans' Standard Plans, Standard Specifications or the Special Provisions publications, Caltrans' Standard Plans, Standard Specifications or the Special Provisions publications shall govern.

01b Nothing contained in the California MUTCD shall prevent Caltrans from modifying, changing or adopting new specifications as necessary. Any revisions to Caltrans' Standard Plans, Standard Specifications or the Special Provisions shall conform to the Standard statements of the California MUTCD.

02 23 CFR 655.603 also states that traffic control devices on all streets, highways, bikeways, and private roads open to public travel (see definition in Section 1A.13) in each State shall be in substantial conformance with standards issued or endorsed by the Federal Highway Administrator.

Support:

03 The Introduction of this Manual contains information regarding the meaning of substantial conformance and the applicability of the MUTCD to private roads open to public travel (see definition in Section 1A.13).

04 The "Uniform Vehicle Code" (see Section 1A.11) has the following provision in Section 15-104 for the adoption of a uniform manual:

"(a) The [State Highway Agency] shall adopt a manual and specification for a uniform system of traffic control devices consistent with the provisions of this code for use upon highways within this State. Such uniform system shall correlate with and so far as possible conform to the system set forth in the most recent edition of the Manual on Uniform Traffic Control Devices for Streets and Highways, and other standards issued or endorsed by the Federal Highway Administrator."

"(b) The Manual adopted pursuant to subsection (a) shall have the force and effect of law."

05 All States have officially adopted the National MUTCD either in its entirety, with supplemental provisions, or as a separate published document.

Guidance:

06 These individual State manuals or supplements should be reviewed for specific provisions relating to that State.

Support:

07 The National MUTCD has also been adopted by the National Park Service, the U.S. Forest Service, the U.S. Military Command, the Bureau of Indian Affairs, the Bureau of Land Management, and the U.S. Fish and Wildlife Service.

Guidance:

08 States should adopt Section 15-116 of the "Uniform Vehicle Code," which states that, "No person shall install or maintain in any area of private property used by the public any sign, signal, marking, or other device intended to regulate, warn, or guide traffic unless it conforms with the State manual and specifications adopted under Section 15-104."

Support:

⁰⁹ Pursuant to the provisions in CVC Section 21400, Caltrans adopts uniform standards and specifications for all traffic control devices after consultation with local agencies and public hearings. Caltrans consults with local agencies and the public through the California Traffic Control Devices Committee (CTCDC). Caltrans publicizes these uniform standards and specifications for traffic control devices through the California MUTCD.

Standard:

¹⁰ In accordance with CVC Section 21401, only traffic control devices conforming to Caltrans standards and specifications shall be placed on streets and highways.

¹¹ Subject to the requirements in CVC Sections 21100, 21100.1, 21107, 21107.5, 21107.6, and 21107.7, no person shall install or maintain in any area of private property used by the public any sign, signal, or marking or other device intended to regulate, warn, or guide traffic unless it conforms to Caltrans standards and specifications.

Support:

¹² The delegation of maintenance activities to local authorities is usually exercised under the authority of Streets and Highways Code Section 130.

¹³ Caltrans standards and specifications for traffic control devices are not applicable to privately owned and maintained roads or commercial establishments, unless the particular city or county enacts an ordinance or resolution to this effect. Refer to CVC Sections 21100, 21100.1, 21107, 21107.5, 21107.6, and 21107.7. However, the use of Caltrans standards and specifications for traffic control devices are encouraged on all privately owned and maintained roads or commercial establishments, in general, as a good practice.

Section 1A.08 Authority for Placement of Traffic Control Devices

Standard:

⁰¹ Traffic control devices, advertisements, announcements, and other signs or messages within the highway right-of-way shall be placed only as authorized by a public authority or the official having jurisdiction, or, in the case of private roads open to public travel (see definition in Section 1A.13), by the private owner or private official having jurisdiction, for the purpose of regulating, warning, or guiding traffic.

⁰² When the public agency or the official having jurisdiction over a street or highway or, in the case of private roads open to public travel (see definition in Section 1A.13), the private owner or private official having jurisdiction, has granted proper authority, others such as contractors and public utility companies shall be permitted to install temporary traffic control devices in temporary traffic control zones. Such traffic control devices shall conform with the Standards of this Manual.

^{02a} On State highways, the California MUTCD shall not supersede Caltrans' Standard Plans, Standard Specifications or the Special Provisions publications but all Standard statements of the California MUTCD shall be met. On State highways, whenever there is a discrepancy between the specifications and requirements contained in the California MUTCD, and those contained in Caltrans' Standard Plans, Standard Specifications or the Special Provisions publications, Caltrans' Standard Plans, Standard Specifications or the Special Provisions publications shall govern.

^{02b} Nothing contained in the California MUTCD shall prevent Caltrans from modifying, changing or adopting new specifications as necessary. Any revisions to Caltrans' Standard Plans, Standard Specifications or the Special Provisions shall conform to the Standard statements of the California MUTCD.

⁰³ All regulatory traffic control devices shall be supported by laws, ordinances, or regulations.

Support:

⁰⁴ Provisions of this Manual are based upon the concept that effective traffic control depends upon both appropriate application of the devices and reasonable enforcement of the regulations.

⁰⁵ Although some highway design features, such as curbs, median barriers, guardrails, speed humps or tables, and textured pavement, have a significant impact on traffic operations and safety, they are not considered to be traffic control devices and provisions regarding their design and use are generally not included in this Manual.

⁰⁶ Certain types of signs and other devices that do not have any traffic control purpose are sometimes placed within the highway right-of-way by or with the permission of the public agency or the official having jurisdiction over the street or highway. Most of these signs and other devices are not intended for use by road users in general, and their message is only important to individuals who have been instructed in their meanings. These

signs and other devices are not considered to be traffic control devices and provisions regarding their design and use are not included in this Manual. Among these signs and other devices are the following:

- A. Devices whose purpose is to assist highway maintenance personnel. Examples include markers to guide snowplow operators, devices that identify culvert and drop inlet locations, and devices that precisely identify highway locations for maintenance or mowing purposes.
- B. Devices whose purpose is to assist fire or law enforcement personnel. Examples include markers that identify fire hydrant locations, signs that identify fire or water district boundaries, speed measurement pavement markings, small indicator lights to assist in enforcement of red light violations, and photo enforcement systems.
- C. Devices whose purpose is to assist utility company personnel and highway contractors, such as markers that identify underground utility locations.
- D. Signs posting local non-traffic ordinances.
- E. Signs giving civic organization meeting information.

Standard:

07 Signs and other devices that do not have any traffic control purpose that are placed within the highway right-of-way shall not be located where they will interfere with, or detract from, traffic control devices.

Guidance:

08 Any unauthorized traffic control device or other sign or message placed on the highway right-of-way by a private organization or individual constitutes a public nuisance and should be removed. All unofficial or non-essential traffic control devices, signs, or messages should be removed.

Support:

09 CVC references are used throughout this California MUTCD when the subject matter relates to State law.

Standard:

10 CVC 21400 provides that Caltrans shall, after consultation with local agencies and public hearings, adopt rules and regulations prescribing uniform standards and specifications for all official traffic control devices placed pursuant to the provisions of the Code.

11 CVC 21401 provides that only those official traffic control devices that conform to the uniform standards and specifications promulgated by Caltrans shall be placed upon a street or highway.

12 CVC 21350 and 21351 give basic authority to Caltrans and local authorities, in their respective jurisdictions, to place and maintain such official traffic control devices.

Option:

13 Local authorities may adopt rules and regulations by ordinance or resolution for regulating traffic by means of official traffic control devices meeting the requirements of CVC Section 21400. Refer to CVC Section 21100 (d).

Standard:

14 Local agencies responsible for the development or operation of bikeways or roadways where bicycle travel is permitted shall utilize all minimum safety design criteria and uniform specifications and symbols for signs, markers, and traffic control devices established by Caltrans. Refer to Streets and Highways Code 891.

15 The use of unauthorized traffic control devices is prohibited by CVC 21465. Prohibited traffic control devices constitute a public nuisance and shall be removed per CVC 21467. This does not modify or limit the authority of the Public Utilities Commission to erect or maintain traffic control devices as authorized by law. Refer to CVC 21468.

16 Private advertising is prohibited on any highway right-of-way by Section 5403 (a) of the Business and Professions Code. "Highway" in this context includes roads, streets, boulevards, lanes, courts, places, commons, trails, ways or other rights-of-way or easements used for or laid out and intended for the public passage of vehicles or of vehicles and persons per Section 5213 of the Business and Professions Code. Also refer to CVC 360 for definition of "highway".

Support:

17 The California Public Utilities Commission is the state regulatory agency with statutory authority over highway-rail grade crossings and highway-light rail transit grade crossings. Refer to Public Utilities Code Section 1202(a).

Section 1A.09 Engineering Study and Engineering Judgment

Support:

01 Definitions of an engineering study and engineering judgment are contained in Section 1A.13.

01a Refer to CVC 627 for definition and requirements of "Engineering and Traffic Survey". It is also abbreviated in this manual as E&TS.

Standard:

02 **This Manual describes the application of traffic control devices, but shall not be a legal requirement for their installation.**

Guidance:

03 *The decision to use a particular device at a particular location should be made on the basis of either an engineering study or the application of engineering judgment. Thus, while this Manual provides Standards, Guidance, and Options for design and applications of traffic control devices, this Manual should not be considered a substitute for engineering judgment. Engineering judgment should be exercised in the selection and application of traffic control devices, as well as in the location and design of roads and streets that the devices complement.*

04 *Early in the processes of location and design of roads and streets, engineers should coordinate such location and design with the design and placement of the traffic control devices to be used with such roads and streets.*

05 *Jurisdictions, or owners of private roads open to public travel (see definition in Section 1A.13), with responsibility for traffic control that do not have engineers on their staffs who are trained and/or experienced in traffic control devices should seek engineering assistance from others, such as the State transportation agency, their county, a nearby large city, or a traffic engineering consultant.*

Support:

06 As part of the Federal-aid Program, each State is required to have a Local ~~Technology~~ **Technical** Assistance Program (LTAP) and to provide technical assistance to local highway agencies. Requisite technical training in the application of the principles of the MUTCD is available from the State's Local ~~Technology~~ **Technical** Assistance Program for needed engineering guidance and assistance.

Section 1A.10 Interpretations, Experimentations, Changes, and Interim Approvals

Standard:

01 **Design, application, and placement of traffic control devices other than those adopted in this Manual shall be prohibited unless the provisions of this Section are followed.**

Support:

02 Continuing advances in technology will produce changes in the highway, vehicle, and road user proficiency; therefore, portions of the system of traffic control devices in this Manual will require updating. In addition, unique situations often arise for device applications that might require interpretation or clarification of this Manual. It is important to have a procedure for recognizing these developments and for introducing new ideas and modifications into the system.

Standard:

03 **Except as provided in Paragraph 4, requests for any interpretation, permission to experiment, interim approval, or change shall be submitted electronically to the Federal Highway Administration (FHWA), Office of Transportation Operations, MUTCD team, at the following e-mail address:**

MUTCDofficialrequest@dot.gov.

Option:

04 If electronic submittal is not possible, requests for interpretations, permission to experiment, interim approvals, or changes may instead be mailed to the

Office of Transportation Operations, HOTO-1,
Federal Highway Administration,
1200 New Jersey Avenue, SE,
Washington, DC 20590.

Support:

⁰⁵ Communications regarding other MUTCD matters that are not related to official requests will receive quicker attention if they are submitted electronically to the MUTCD Team Leader or to the appropriate individual MUTCD team member. Their e-mail addresses are available through the links contained on the "Who's Who" page on the MUTCD website at

<http://mutcd.fhwa.dot.gov/team.htm>.

^{05a} Requests for experimentation, interpretation, or changes relating to the California edited portion of the California MUTCD are covered later in this section.

⁰⁶ An interpretation includes a consideration of the application and operation of standard traffic control devices, official meanings of standard traffic control devices, or the variations from standard device designs.

Guidance:

⁰⁷ Requests for an interpretation of this Manual should contain the following information:

- A. A concise statement of the interpretation being sought;
- B. A description of the condition that provoked the need for an interpretation;
- C. Any illustration that would be helpful to understand the request; and
- D. Any supporting research data that is pertinent to the item to be interpreted.

Support:

⁰⁸ Requests to experiment include consideration of field deployment for the purpose of testing or evaluating a new traffic control device, its application or manner of use, or a provision not specifically described in this Manual.

⁰⁹ A request for permission to experiment will be considered only when submitted by the public agency or toll facility operator responsible for the operation of the road or street on which the experiment is to take place. For a private road open to public travel (see definition in Section 1A.13), the request will be considered only if it is submitted by the private owner or private official having jurisdiction.

¹⁰ A diagram indicating the process for experimenting with traffic control devices is shown in Figure 1A-1 and 1A-1(CA).

Guidance:

¹¹ The request for permission to experiment should contain the following:

- A. A statement indicating the nature of the problem.
- B. A description of the proposed change to the traffic control device or application of the traffic control device, how it was developed, the manner in which it deviates from the standard, and how it is expected to be an improvement over existing standards.
- C. Any illustration that would be helpful to understand the traffic control device or use of the traffic control device.
- D. Any supporting data explaining how the traffic control device was developed, if it has been tried, in what ways it was found to be adequate or inadequate, and how this choice of device or application was derived.
- E. A legally binding statement certifying that the concept of the traffic control device is not protected by a patent or copyright. (An example of a traffic control device concept would be countdown pedestrian signals in general. Ordinarily an entire general concept would not be patented or copyrighted, but if it were it would not be acceptable for experimentation unless the patent or copyright owner signs a waiver of rights acceptable to the FHWA. An example of a patented or copyrighted specific device within the general concept of countdown pedestrian signals would be a manufacturer's design for its specific brand of countdown signal, including the design details of the housing or electronics that are unique to that manufacturer's product. As long as the general concept is not patented or copyrighted, it is acceptable for experimentation to incorporate the use of one or more patented devices of one or several manufacturers.)
- F. The time period and location(s) of the experiment.
- G. A detailed research or evaluation plan that must provide for close monitoring of the experimentation, especially in the early stages of its field implementation. The evaluation plan should include before and after studies as well as quantitative data describing the performance of the experimental device.
- H. An agreement to restore the site of the experiment to a condition that complies with the provisions of this Manual within 3 months following the end of the time period of the experiment. This agreement must also provide that the agency sponsoring the experimentation will terminate the experimentation at any time that it

determines significant safety concerns are directly or indirectly attributable to the experimentation. The FHWA's Office of Transportation Operations has the right to terminate approval of the experimentation at any time if there is an indication of safety concerns. If, as a result of the experimentation, a request is made that this Manual be changed to include the device or application being experimented with, the device or application will be permitted to remain in place until an official rulemaking action has occurred.

- I. *An agreement to provide semi-annual progress reports for the duration of the experimentation, and an agreement to provide a copy of the final results of the experimentation to the FHWA's Office of Transportation Operations within 3 months following completion of the experimentation. The FHWA's Office of Transportation Operations has the right to terminate approval of the experimentation if reports are not provided in accordance with this schedule.*

Support:

12 A change includes consideration of a new device to replace a present standard device, an additional device to be added to the list of standard devices, or a revision to a traffic control device application or placement criteria.

Guidance:

13 *Requests for a change to this Manual should contain the following information:*

- A. *A statement indicating what change is proposed;*
- B. *Any illustration that would be helpful to understand the request; and*
- C. *Any supporting research data that is pertinent to the item to be reviewed.*

Support:

14 Interim approval allows interim use, pending official rulemaking, of a new traffic control device, a revision to the application or manner of use of an existing traffic control device, or a provision not specifically described in this Manual. The FHWA issues an Interim Approval by official memorandum signed by the Associate Administrator for Operations and posts this memorandum on the MUTCD website. The issuance by FHWA of an interim approval will typically result in the traffic control device or application being placed into the next scheduled rulemaking process for revisions to this Manual.

15 Interim approval is considered based on the results of successful experimentation, results of analytical or laboratory studies, and/or review of non-U.S. experience with a traffic control device or application. Interim approval considerations include an assessment of relative risks, benefits, costs, impacts, and other factors.

16 Interim approval allows for optional use of a traffic control device or application and does not create a new mandate or recommendation for use. Interim approval includes conditions that jurisdictions agree to comply with in order to use the traffic control device or application until an official rulemaking action has occurred.

[16a Refer to Table 1A-101\(CA\) for the status of Interim Approvals issued by FHWA in California.](#)

Standard:

17 **A jurisdiction, toll facility operator, or owner of a private road open to public travel (see definition in Section 1A.13) that desires to use a traffic control device for which FHWA has issued an interim approval shall request permission from FHWA.**

Guidance:

18 *The request for permission to place a traffic control device under an interim approval should contain the following:*

- A. *A description of where the device will be used, such as a list of specific locations or highway segments or types of situations, or a statement of the intent to use the device jurisdiction-wide;*
- B. *An agreement to abide by the specific conditions for use of the device as contained in the FHWA's interim approval document;*
- C. *An agreement to maintain and continually update a list of locations where the device has been installed; and*
- D. *An agreement to:*
 1. *Restore the site(s) of the interim approval to a condition that complies with the provisions in this Manual within 3 months following the issuance of a final rule on this traffic control device; and*
 2. *Terminate use of the device or application installed under the interim approval at any time that it determines significant safety concerns are directly or indirectly attributable to the device or application. The FHWA's Office of Transportation Operations has the right to terminate the interim approval at any time if there is an indication of safety concerns.*

Option:

19 A State may submit a request for the use of a device under interim approval for all jurisdictions in that State, as long as the request contains the information listed in Paragraph 18.

Support:

19a [Figure 1A-101\(CA\)](#) shows the process for the use of traffic control devices in California approved as interim approval by FHWA.

Guidance:

20 A local jurisdiction, toll facility operator, or owner of a private road open to public travel (see definition in [Section 1A.13](#)) using a traffic control device or application under an interim approval that was granted by FHWA either directly or on a statewide basis based on the State's request should inform the State of the locations of such use.

21 A local jurisdiction, toll facility operator, or owner of a private road open to public travel (see definition in [Section 1A.13](#)) that is requesting permission to experiment or permission to use a device or application under an interim approval should first check for any State laws and/or directives covering the application of the MUTCD provisions that might exist in their State.

Option:

22 A device or application installed under an interim approval may remain in place, under the conditions established in the interim approval, until an official rulemaking action has occurred.

Support:

23 A diagram indicating the process for incorporating new traffic control devices into this Manual is shown in [Figure 1A-2](#).

24 For additional information concerning interpretations, experimentation, changes, or interim approvals, visit the MUTCD website at <http://mutcd.fhwa.dot.gov>.

Standard:

25 **Requests shall be made to the FHWA for experimenting with any new traffic control device, its application or manner of use, or a provision not specifically described in the Manual on Uniform Traffic Control Devices.**

Support:

26 In addition to the requirements of the FHWA, experimental traffic control devices are subject to the laws, regulations and policies of the State of California.

Standard:

27 **The agency shall request and receive approval from the California Traffic Control Devices Committee and Federal Highway Administration, when needed, prior to installation of experimentation devices on public roadways in California.**

Support:

28 For information contact:

Executive Secretary,
California Traffic Control Devices Committee
<https://www.dot.ca.gov/programs/safety-programs/ctcdc>

29 The California MUTCD contains the official standards and policies of the State of California for the design, application, and placement of traffic control devices.

30 Experimentation is defined as research involving the acts of testing, evaluating, analyzing or discovering the effect of a specific device, principle, supposition, etc., usually carried out in an operational context. Experimentation could also be performed in a laboratory. The request for experimentation is a submission specifically requesting approval to use a non-standard device on public roadways for purposes of gathering verification data.

31 As used herein, the term "device" includes not only signs, signals, and markings, but also their application and manner of use.

Guidance:

32 *Requests for experimentation, interpretation, or changes relating to the California edited portion of the California MUTCD should be sent to:*

*Executive Secretary,
California Traffic Control Devices Committee – MS36
P.O. Box 942874, Sacramento, CA-94274-0001*

Support:

³³ The following procedures apply to requests for experimentation:

Submission of Projects

³⁴ A request for permission to experiment will be considered only when submitted by the public agency or private toll facility responsible for the operation of the road or street on which the experiment is to take place.

Guidance:

³⁵ *Experimentation requests should contain the following information:*

- A. *A statement indicating the nature of the problem.*
- B. *A description of the proposed change, how it was developed, the manner in which it deviates from the standard, and how it is expected to be an improvement over existing standards.*
- C. *Any illustration, photograph, or videos, which would help, explain the experimental device or use of this device.*
- D. *Any supporting data as to how the experimental device was developed, if it has been tried, in what ways it was found to be adequate or inadequate, and how was this choice of device or application arrived at.*

Support:

³⁶ Requests for experimentation that are submitted without an explanation of the objective, scope, and duration will be returned to the originator for amplification.

Procedure for Processing Requests

- A. All requests for experimentation will be reviewed by the Secretary of the California Traffic Control Devices Committee to determine whether other related experimentation has been scheduled, in process, or already completed.
- B. The Secretary of the California Traffic Control Devices Committee will list the experimentation proposal on the next Committee agenda for review and approval. The Committee's approval would also include the specific guidelines to be followed for the experimentation.
- C. Action by the California Traffic Control Devices Committee on any request for experimental use of a non-conforming device could take several forms:
 1. Approval of the device for limited use on an experimental project.
 2. Approval of the device for limited use in a formal research project.
 3. Disapproval until such time as satisfactory research or other justification is submitted.
 4. Disapproval.
- D. After action by the California Traffic Control Devices Committee, the Secretary of the California Traffic Control Devices Committee will notify the originating party of its decision. If approved, the originating parties will be requested to submit a status report on the experimental testing at appropriate intervals. When the results of experimentation are completed, a final report will be prepared and forwarded to the Secretary for Committee review.
- E. The agency receiving approval for experimentation must agree to faithfully follow the specific guidelines for the experimentation, must forward reports as indicated, and must agree to terminate the experimentation upon notification.

Specific Guidelines for Experimental Proposal

Guidance:

³⁷ *A specific proposal should be submitted for each request.*

Support:

³⁸ This proposal can be submitted with the initial request or could be a follow-up to specific comments by the California Traffic Control Devices Committee. The proposal, after approval by the Committee, will become an integral part of the approved experimentation.

Guidance:

³⁹ *Each proposal should include:*

- A. Scope: *A detailed description of the experimentation, locations of installation, and number of experimental projects.*
- B. Work Plan: *A description of the proposed plan of study; the variables that are to be measured; the criteria against which the devices is to be evaluated; observations, measures and data which will be collected; whether the experimentation will be carried out in the field or under laboratory conditions; how installations of the experimental device or application will be made; the indication if any adverse effects on safety or traffic operations can be anticipated, together with the means that may be taken to minimize them; and the factors which will be held constant or measured and controlled in order to ensure that the true effects of the device are measured.*
- C. Time Periods: *Time periods for experimentation will normally not be less than six months nor more than two years.*

- D. Evaluation Procedures: *The California Traffic Control Devices Committee will approve criteria, which will be used to evaluate experimental devices or applications. To permit meaningful comparisons with standard installations, advice from specialists such as human factor experts, statisticians, etc., could be included.*
- E. Reporting: *A written status report must be forwarded to the sponsor 45 days prior to each public meeting. A final report must be completed within 90 days of the terminal date of the experimentation and forwarded to the Secretary of the California Traffic Control Devices Committee. Status reports will describe the progress of the work, any particular deviation from the work plan and anticipated time of conclusion. The final report will contain, as a minimum, the basic information on the problem, the preliminary investigations, the proposed solutions, the study procedures, the detailed analysis of the data, the results of the work, a discussion of the results, and whatever conclusions are drawn. If a change in the California MUTCD is proposed, the recommended text (wording) for the California MUTCD should be included.*
- F. Administration: *All experimentation proposals will include the agency sponsoring the study, the agency conducting the study, and the name and titles of principal researchers. There must be proof of professional traffic engineering capabilities and other related professional expertise to perform the experimentation and related evaluation processes.*

Termination of Experimentation

Standard:

⁴⁰ The project shall terminate at the end of the approved period unless an extension is granted, and all experimental devices and applications shall be removed unless specific permission is given for continued operation.

Support:

⁴¹ The California Traffic Control Devices Committee could, at any time, terminate approval of experimentation if significant safety hazards are indicated to be directly or indirectly attributable to the experimentation. Approval of any experimentation could also be terminated if no status report is received 45 days prior to each public meeting or no final report is received within 90 days of the terminal date of the experimentation.

Removal of Experimentation Installations

Standard:

⁴² All experimentation installations shall be removed upon termination of the experiment-when a decision is made by the California Traffic Control Devices Committee that the device is not warranted.

Support:

⁴³ Authority and reference cited for removal of experimentation installation is CVC Section 21400.

Table 1A-101(CA). Status of Interim Approvals Issued By FHWA in California

No.	Description	Date Issued by FHWA	Date Adopted in CA
IA-1	Optional use of retroreflective borders on traffic signal backplates	2/6/04	12/7/06
IA-2	Optional use of wayside horn system (WHS) at highway-rail grade crossings	8/2/04	12/7/06
IA-4R	REVISED Interim Approval for Use of Automated Flagger Assistance Devices	1/28/05	5/9/06
IA-5	Interim Approval for Use of Clearview Font for Positive Contrast Legends on Guide Signs	9/2/04	12/7/06
IA-8	Interim Approval for Optional Use of RV Friendly Symbol Sign	9/6/05	12/7/06
IA-9	Interim Approval to Display More than Six Specific Service Logo Panels for a Type of Service	9/21/06	Incorporated in the CA MUTCD 2012
IA-10	Interim Approval for Optional Use of Flashing Yellow Arrow for Permissive Left	3/20/06	11/3/08
IA-11	Optional Use of Rectangular Rapid Flashing Beacons	7/16/08	8/10/11
IA-12	Interim Approval for Optional Use of Traffic Signal Photo Enforced Signs	11/12/10	Continue to use SR56(CA) sign spec
IA-13	Interim Approval for Optional Use of an Alternative Electric Vehicle Charging General Service Symbol Sign	4/1/11	8/10/11
IA-14	Interim Approval for the Optional Use of Green Colored Pavement for Bike Lanes	4/15/11	8/12/11
IA-15	Interim Approval for the Optional Use of an Alternative Design for the U.S. Bicycle Route (M1-9) Sign	6/1/12	10/27/12
IA-16	Interim Approval for the Optional Use of Bicycle Signal Faces	12/24/13	11/27/15
IA-17	Interim Approval for Optional Use of Three-Section Flashing Yellow Arrow Signal Faces	8/12/14	4/7/17
IA-18	Interim Approval for Optional Use of an Intersection Bicycle box	10/12/16	4/6/17
IA-19	Interim Approval for the Optional Use of an Alternative Signal Warrant 7 - Crash Experience	2/24/17	---
IA-20	Interim Approval for the Optional Use of Two-Stage Bicycle Turn Boxes	7/13/17	8/15/17
IA-21	Interim Approval for the Optional Use of Pedestrian-Actuated Rectangular Rapid-Flashing Beacons at Uncontrolled Marked Crosswalks	3/21/18	4/9/18

Notes:

- Interim Approvals IA-1, 2, 4R, 8, 9, and 10 were issued by FHWA during the time that the 2003 National MUTCD was in effect, for devices that have been incorporated into the 2009 National MUTCD. These Interim Approvals have been terminated by FHWA and are no longer in effect. Refer https://mutcd.fhwa.dot.gov/res-interim_approvals.htm
- Visit http://mutcd.fhwa.dot.gov/res-interim_approvals.htm for Interim Approval IA-5 Termination Memorandum dated January 28, 2016 and IA 11 Termination Memorandum dated December 21, 2017.
- Visit <https://dot.ca.gov/programs/safety-programs/camutcd/interim> for full table including web links and pdf file links. Refer to TOPD 13-01 for use on Electric Vehicle Charging Station sign G66-21B(CA) <https://dot.ca.gov/trafficops/policy/13-01.pdf>

Section 1A.11 Relation to Other Publications

Standard:

01 To the extent that they are incorporated by specific reference, the latest editions of the following publications, or those editions specifically noted, shall be a part of this Manual: “Standard Highway Signs and Markings” book (FHWA); and “Color Specifications for Retroreflective Sign and Pavement Marking Materials” (appendix to subpart F of Part 655 of Title 23 of the Code of Federal Regulations).

Support:

02 The “Standard Highway Signs and Markings” book includes standard alphabets and symbols and arrows for signs and pavement markings.

03 For information about the publications mentioned in Paragraph 1, visit the Federal Highway Administration’s MUTCD website at

<http://mutcd.fhwa.dot.gov>,

or write to the

FHWA,
1200 New Jersey Avenue, SE, HOTO,
Washington, DC 20590.

04 Other publications that are useful sources of information with respect to the use of this Manual are listed in this paragraph. See Page i of this Manual for ordering information for the following publications (later editions might also be available as useful sources of information):

1. “AAA School Safety Patrol Operations Manual,” 2006 Edition (American Automobile Association—AAA)
2. “A Policy on Geometric Design of Highways and Streets,” 2004 Edition (American Association of State Highway and Transportation Officials—AASHTO)
3. “Guide for the Development of Bicycle Facilities,” 1999 Edition (AASHTO)
4. “Guide for the Planning, Design, and Operation of Pedestrian Facilities,” 2004 Edition (AASHTO)
5. “Guide to Metric Conversion,” 1993 Edition (AASHTO)
6. “Guidelines for the Selection of Supplemental Guide Signs for Traffic Generators Adjacent to Freeways,” 4th Edition/Guide Signs, Part II: Guidelines for Airport Guide Signing/Guide Signs, Part III: List of Control Cities for Use in Guide Signs on Interstate Highways,” Item Code: GSGLC-4, 2001 Edition (AASHTO)
7. “Roadside Design Guide,” 2006 Edition (AASHTO)
8. “Standard Specifications for Movable Highway Bridges,” 1988 Edition (AASHTO)
9. “Traffic Engineering Metric Conversion Folders—Addendum to the Guide to Metric Conversion,” 1993 Edition (AASHTO)
10. “2009 AREMA Communications & Signals Manual,” (American Railway Engineering & Maintenance-of-Way Association—AREMA)
11. “Changeable Message Sign Operation and Messaging Handbook (FHWA-OP-03-070),” 2004 Edition (Federal Highway Administration—FHWA)
12. “Designing Sidewalks and Trails for Access—Part 2—Best Practices Design Guide (FHWA-EP-01-027),” 2001 Edition (FHWA)
13. “Federal-Aid Highway Program Guidance on High Occupancy Vehicle (HOV) Lanes,” 2001 (FHWA)
14. “Maintaining Traffic Sign Retroreflectivity,” 2007 Edition (FHWA)
15. “Railroad-Highway Grade Crossing Handbook—Revised Second Edition (FHWA-SA-07-010),” 2007 Edition (FHWA)
16. “Ramp Management and Control Handbook (FHWA-HOP-06-001),” 2006 Edition (FHWA)
17. “Roundabouts-An Informational Guide (FHWA-RD-00-067),” 2000 Edition (FHWA)
18. “Signal Timing Manual (FHWA-HOP-08-024),” 2008 Edition (FHWA)
19. “Signalized Intersections: an Informational Guide (FHWA-HRT-04-091),” 2004 Edition (FHWA)
20. “Travel Better, Travel Longer: A Pocket Guide to Improving Traffic Control and Mobility for Our Older Population (FHWA-OP-03-098),” 2003 Edition (FHWA)
21. “Practice for Roadway Lighting,” RP-8, 2001 (Illuminating Engineering Society—IES)

22. "Safety Guide for the Prevention of Radio Frequency Radiation Hazards in the Use of Commercial Electric Detonators (Blasting Caps)," Safety Library Publication No. 20, July 2001 Edition (Institute of Makers of Explosives)
23. "American National Standard for High-Visibility Public Safety Vests," (ANSI/ISEA 207-2006), 2006 Edition (International Safety Equipment Association—ISEA)
24. "American National Standard for High-Visibility Safety Apparel and Headwear," (ANSI/ISEA 107-2004), 2004 Edition (ISEA)
25. "Manual of Traffic Signal Design," 1998 Edition (Institute of Transportation Engineers—ITE)
26. "Manual of Transportation Engineering Studies," 1994 Edition (ITE)
27. "Pedestrian Traffic Control Signal Indications," Part 1—1985 Edition; Part 2 (LED Pedestrian Traffic Signal Modules)—2004 Edition (ITE)
28. "Preemption of Traffic Signals Near Railroad Crossings," 2006 Edition (ITE)
29. "Purchase Specification for Flashing and Steady Burn Warning Lights," 1981 Edition (ITE)
30. "Traffic Control Devices Handbook," 2001 Edition (ITE)
31. "Traffic Detector Handbook," 1991 Edition (ITE)
32. "Traffic Engineering Handbook," 2009 Edition (ITE)
33. "Traffic Signal Lamps," 1980 Edition (ITE)
34. "Vehicle Traffic Control Signal Heads," Part 1—1985 Edition; Part 2 (LED Circular Signal Supplement)—2005 Edition; Part 3 (LED Vehicular Arrow Traffic Signal Supplement)—2004 Edition (ITE)
35. "Uniform Vehicle Code (UVC) and Model Traffic Ordinance," 2000 Edition (National Committee on Uniform Traffic Laws and Ordinances—NCUTLO)
36. "NEMA Standards Publication TS 4-2005 Hardware Standards for Dynamic Message Signs (DMS) With NTCIP Requirements," 2005 Edition (National Electrical Manufacturers Association—NEMA)
37. "Occupational Safety and Health Administration Regulations (Standards - 29 CFR), General Safety and Health Provisions - 1926.20," amended June 30, 1993 (Occupational Safety and Health Administration—OSHA)
38. "Accessible Pedestrian Signals—A Guide to Best Practices (NCHRP Web-Only Document 117A)," 2008 Edition (Transportation Research Board—TRB)
39. "Guidelines for Accessible Pedestrian Signals (NCHRP Web-Only Document 117B)," 2008 Edition (TRB)
40. "Highway Capacity Manual," 2000 Edition (TRB)
41. "Recommended Procedures for the Safety Performance Evaluation of Highway Features," (NCHRP Report 350), 1993 Edition (TRB)
42. "The Americans with Disabilities Act Accessibility Guidelines for Buildings and Facilities (ADAAG)," July 1998 Edition (The U.S. Access Board)

Standard:

⁰⁵ The latest edition of Caltrans' California Sign Specifications shall be a part of this manual.

Support:

⁰⁶ Refer to the following web link for more information: <https://dot.ca.gov/programs/safety-programs/sign-specs>

⁰⁷ The latest version of other documents that are useful sources of information with respect to the use of this Manual are listed below. See the Introduction Part of this California MUTCD for ordering information for the following publications:

1. "California Building Standards Code" (California Building Standards Commission)
2. "California Business and Professions Code" (State of California)
3. "California Code of Regulations" (State of California)
4. "California Education Code" (State of California)
5. "California Government Code" (State of California)
6. "California Health and Safety Code" (State of California)
7. "California Streets and Highways Code" (State of California)
8. "California Vehicle Code" (CVC) (Department of Motor Vehicles)
9. "Changeable Message Sign Guidelines" (Caltrans)
10. "Construction Manual" (Caltrans)
11. "Highway Design Handbook For Older Drivers And Pedestrians" (Federal Highway Administration)
12. "Highway Design Manual" (Caltrans)
13. "High Occupancy Vehicle Guidelines for Planning, Design, and Operations" (Caltrans)

14. "Historic Highway Bridges of California" (Caltrans)
15. "Maintenance Manual" (Caltrans)
16. "Manual for Encroachment Permits on California State Highways" (Caltrans)
17. "Plans, Specifications and Estimates Guide" (PS&E) (Caltrans)
18. "Project Development Procedures Manual" (Caltrans)
19. "Ramp Meter Design Manual" (Caltrans)
20. "Ready to List and Construction Contract Award Guide" (Caltrans)
21. "Signal, Lighting and Electrical System Design Guide" (Caltrans)
22. "Standard Plans" (Caltrans)
23. "Standard Specifications" (Caltrans)
24. "Standard Special Provisions" (Caltrans)
25. "Transportation Management Plan Guidelines" (Caltrans)
26. "Traffic Engineering Metric Conversion Factors" (American Association of State Highway and transportation Officials - AASHTO).
27. "Traffic Manual" (Caltrans)
28. "Transportation Management Plan Guidelines", (Caltrans)

Section 1A.12 Color Code

Support:

⁰¹ The following color code establishes general meanings for 11 colors of a total of 13 colors that have been identified as being appropriate for use in conveying traffic control information. tolerance limits for each color are contained in 23 CFR Part 655, Appendix to Subpart F and are available at the Federal Highway Administration's MUTCD website at <http://mutcd.fhwa.dot.gov> or by writing to the FHWA, Office of Safety Research and Development (HRD-T-301), 6300 Georgetown Pike, McLean, VA 22101.

⁰² The two colors for which general meanings have not yet been assigned are being reserved for future applications that will be determined only by FHWA after consultation with the States, the engineering community, and the general public. The meanings described in this Section are of a general nature. More specific assignments of colors are given in the individual Parts of this Manual relating to each class of devices.

Standard:

⁰³ **The general meaning of the 13 colors shall be as follows:**

A. Black—regulation

B. Blue—road user services guidance, tourist information, and evacuation route

C. Brown—recreational and cultural interest area guidance

D. Coral—unassigned

E. Fluorescent Pink—incident management

F. Fluorescent Yellow-Green—pedestrian warning, bicycle warning, playground warning, school bus and school warning

G. Green—indicated movements permitted, direction guidance

H. Light Blue—unassigned

I. Orange—temporary traffic control

J. Purple—lanes restricted to use only by vehicles with registered electronic toll collection (ETC) accounts

K. Red—stop or prohibition

L. White—regulation

M. Yellow—warning

Section 1A.13 Definitions of Headings, Words, and Phrases in this Manual

Standard:

⁰¹ **When used in this Manual, the text headings of Standard, Guidance, Option, and Support shall be defined as follows:**

A. Standard—a statement of required, mandatory, or specifically prohibitive practice regarding a traffic control device. All Standard statements are labeled, and the text appears in bold type. The

verb “shall” is typically used. The verbs “should” and “may” are not used in Standard statements. Standard statements are sometimes modified by Options.

- B. **Guidance**—a statement of recommended, but not mandatory, practice in typical situations, with deviations allowed if engineering judgment or engineering study indicates the deviation to be appropriate. All Guidance statements are labeled, and the text appears in unbold type. The verb “should” is typically used. The verbs “shall” and “may” are not used in Guidance statements. Guidance statements are sometimes modified by Options.
- C. **Option**—a statement of practice that is a permissive condition and carries no requirement or recommendation. Option statements sometime contain allowable modifications to a Standard or Guidance statement. All Option statements are labeled, and the text appears in unbold type. The verb “may” is typically used. The verbs “shall” and “should” are not used in Option statements.
- D. **Support**—an informational statement that does not convey any degree of mandate, recommendation, authorization, prohibition, or enforceable condition. Support statements are labeled, and the text appears in unbold type. The verbs “shall,” “should,” and “may” are not used in Support statements.

⁰² Unless otherwise defined in this Section, or in other Parts of this Manual, words or phrases shall have the meaning(s) as defined in the most recent editions of the “Uniform Vehicle Code,” “AASHTO Transportation Glossary (Highway Definitions),” “[California Vehicle Code](#)” and other publications mentioned in Section 1A.11.

⁰³ The following words and phrases, when used in this Manual, shall have the following meanings:

- 1. **Accessible Pedestrian Signal**—a device that communicates information about pedestrian signal timing in non-visual format such as audible tones, speech messages, and/or vibrating surfaces.
- 2. **Accessible Pedestrian Signal Detector**—a device designated to assist the pedestrian who has visual or physical disabilities in activating the pedestrian phase.
- 3. **Active Grade Crossing Warning System**—the flashing-light signals, with or without warning gates, together with the necessary control equipment used to inform road users of the approach or presence of rail traffic at grade crossings.
- 4. **Actuated Operation**—a type of traffic control signal operation in which some or all signal phases are operated on the basis of actuation.
- 5. **Actuation**—initiation of a change in or extension of a traffic signal phase through the operation of any type of detector.
- 6. **Advance Preemption**—the notification of approaching rail traffic that is forwarded to the highway traffic signal controller unit or assembly by the railroad or light rail transit equipment in advance of the activation of the railroad or light rail transit warning devices.
- 7. **Advance Preemption Time**—the period of time that is the difference between the required maximum highway traffic signal preemption time and the activation of the railroad or light rail transit warning devices.
- 8. **Advisory Speed**—a recommended speed for all vehicles operating on a section of highway and based on the highway design, operating characteristics, and conditions.
- 9. **Alley**—a street or highway intended to provide access to the rear or side of lots or buildings in urban areas and not intended for the purpose of through vehicular traffic. [Refer to CVC 110, for definition of "Highway"](#).
- 10. **Altered Speed Zone**—a speed limit, other than a statutory speed limit, that is based upon an engineering study. [Refer to CVC 22357 and 22358](#).
- 11. **Approach**—all lanes of traffic moving toward an intersection or a midblock location from one direction, including any adjacent parking lane(s).
- 12. **Arterial Highway (Street)**—a general term denoting a highway primarily used by through traffic, usually on a continuous route or a highway designated as part of an arterial system.
- 13. **Attended Lane (Manual Lane)**—a toll lane adjacent to a toll booth occupied by a human toll collector who makes change, issues receipts, and perform other toll-related functions. Attended lanes at toll plazas typically require vehicles to stop to pay the toll.
- 14. **Automatic Lane**—see Exact Change Lane.
- 15. **Average Annual Daily Traffic (AADT)**—the total volume of traffic passing a point or segment of a highway facility in both directions for one year divided by the number of days in the year. Normally,

- periodic daily traffic volumes are adjusted for hours of the day counted, days of the week, and seasons of the year to arrive at average annual daily traffic.
16. **Average Daily Traffic (ADT)**—the average 24 hour volume, being the total volume during a stated period divided by the number of days in that period. Normally, this would be periodic daily traffic volumes over several days, not adjusted for days of the week or seasons of the year.
 17. **Average Day**—a day representing traffic volumes normally and repeatedly found at a location, typically a weekday when volumes are influenced by employment or a weekend day when volumes are influenced by entertainment or recreation.
 18. **Backplate**—see Signal Backplate.
 19. **Barrier-Separated Lane**—a preferential lane or other special purpose lane that is separated from the adjacent general-purpose lane(s) by a physical barrier.
 20. **Beacon**—a highway traffic signal with one or more signal sections that operates in a flashing mode.
 21. **Bicycle**—a pedal-powered vehicle upon which the human operator sits. **As per CVC 231, a bicycle is a device upon which any person may ride, propelled exclusively by human power through a belt, chain, or gears, and having one or more wheels. Persons riding bicycles are subject to the provisions of this code specified in Sections 21200 and 21200.5. Also refer to CVC 39000 and S&H Code Section 890.2.**
 22. **Bicycle Facilities**—a general term denoting improvements and provisions that accommodate or encourage bicycling, including parking and storage facilities, and shared roadways not specifically defined for bicycle use.
 23. **Bicycle Lane**—a portion of a roadway that has been designated for preferential or exclusive use by bicyclists by pavement markings and, if used, signs. **See Class II Bikeway.**
 - 23a. **Bicycle Path** – A "bicycle path" or "bike path" is a Class I bikeway, as defined in subdivision (a) of Section 890.4 of the Streets and Highways Code. Refer to CVC 231.5. **See Class I Bikeway.**
 - 23b. **Bicycle Path Crossing** - That portion of a roadway included within the prolongation or connection of the boundary lines of a bike path at intersections where the intersecting roadways meet at approximately right angles or any portion of a roadway distinctly indicated for bicycle crossing by lines or other markings on the surface. Refer to CVC 231.6.
 24. **Bikeway**—a generic term for any road, street, path, or way that in some manner is specifically designated for bicycle travel, regardless of whether such facilities are designated for the exclusive use of bicycles or are to be shared with other transportation modes. **Bikeway – All facilities that provide primarily for bicycle travel. Refer California Streets and Highways Code Section 890.4.**
 - 24a. **Bike Route** – See Class III Bikeway.
 - 24b. **Buffered Bicycle Lane** – A buffered bicycle lane is a bicycle lane that is separated from the adjacent general-purpose lane or parking lane by a pattern of standard longitudinal markings. The buffer area might include chevron or diagonal markings.
 25. **Buffer-Separated Lane**—a preferential lane or other special purpose lane that is separated from the adjacent general-purpose lane(s) by a pattern of standard longitudinal pavement markings that is wider than a normal or wide lane line marking. The buffer area might include rumble strips, textured pavement, or channelizing devices such as tubular markers or traversable curbs, but does not include a physical barrier.
 - 25a. **Business District** - A "business district" is that portion of a highway and the property contiguous thereto (a) upon one side of which highway, for a distance of 600 feet, 50 percent or more of the contiguous property fronting thereon is occupied by buildings in use for business, or (b) upon both sides of which highway, collectively, for a distance of 300 feet, 50 percent or more of the contiguous property fronting thereon is so occupied. A business district may be longer than the distances specified in this section if the above ratio of buildings in use for business to the length of the highway exists. Refer to CVC 235.
 - 25b. **CVC** – California Vehicle Code.
 - 25c. **California Sign Specifications** – Detailed drawings of signs approved by Caltrans for use in California.
 26. **Cantilevered Signal Structure**—a structure, also referred to as a mast arm, that is rigidly attached to a vertical pole and is used to provide overhead support of highway traffic signal faces or grade crossing signal units.

27. **Center Line Markings**—the yellow pavement marking line(s) that delineates the separation of traffic lanes that have opposite directions of travel on a roadway. These markings need not be at the geometrical center of the pavement.
28. **Changeable Message Sign**—a sign that is capable of displaying more than one message (one of which might be a “blank” display), changeable manually, by remote control, or by automatic control. Electronic-display changeable message signs are referred to as Dynamic Message Signs in the National Intelligent Transportation Systems (ITS) Architecture and are referred to as Variable Message Signs in the National Electrical Manufacturers Association (NEMA) standards publication.
29. **Channelizing Line Markings**—a wide or double solid white line used to form islands where traffic in the same direction of travel is permitted on both sides of the island.
30. **Circular Intersection**—an intersection that has an island, generally circular in design, located in the center of the intersection where traffic passes to the right of the island. Circular intersections include roundabouts, rotaries, and traffic circles.
31. **Circulatory Roadway**—the roadway within a circular intersection on which traffic travels in a counterclockwise direction around an island in the center of the circular intersection.
- 31a. **Civil Engineer** - a professional engineer in the branch of civil engineering and refers to one who practices or offers to practice civil engineering in any of its phases. Refer to California Business and Professions Code Section 6702.
- 31b. **Class I Bikeway (such as a Bike Path or a Shared-Use Path)** – Provides a completely separated right-of-way designated for the exclusive use of bicycles and pedestrians with crossflows by motorists minimized. Refer California Streets and Highways Code Section 890.4. Refer to Caltrans' Highway Design Manual Index 1003.1 for design criteria.
- 31c. **Class II Bikeway (such as a Bike Lane)** – Provides a restricted right-of-way designated for the exclusive or semi-exclusive use of bicycles with through travel by motor vehicles or pedestrians prohibited, but with vehicle parking and crossflows by pedestrians and motorists permitted. Refer to California Streets and Highways Code Section 890.4. Refer to Caltrans' Highway Design Manual Index 1003.2 for design criteria.
- 31d. **Class III Bikeway (such as a Bike Route)** – provide a right-of-way designated by signs or permanent markings and shared with pedestrians or motorists. Refer to California Streets and Highways Code Section 890.4. Refer to Caltrans' Highway Design Manual Index 1003.3 for design criteria.
- 31e. **Class IV Bikeway (such as a cycle track or separated bikeway)** – Provides a right-of-way designated exclusively for bicycle travel adjacent to a roadway and which is separated from vehicular traffic. Types of separation include, but are not limited to, grade separation, flexible posts, inflexible physical barriers, or on-street parking. Refer to California Streets and Highways Code Section 890.4. Refer to Caltrans' Design Information Bulletin Number 89 for design criteria.
- 31f. **Contraflow Bicycle Lane** – A contraflow bicycle lane is an area of the roadway designated to allow for the lawful use by bicyclists to travel in the opposite direction from vehicular traffic on a roadway that allows vehicular traffic to travel in only one direction.
32. **Clear Storage Distance**—when used in Part 8, the distance available for vehicle storage measured between 6 feet from the rail nearest the intersection to the intersection stop line or the normal stopping point on the highway. At skewed grade crossings and intersections, the 6-foot distance shall be measured perpendicular to the nearest rail either along the center line or edge line of the highway, as appropriate, to obtain the shorter distance. Where exit gates are used, the distance available for vehicle storage is measured from the point where the rear of the vehicle would be clear of the exit gate arm. In cases where the exit gate arm is parallel to the track(s) and is not perpendicular to the highway, the distance is measured either along the center line or edge line of the highway, as appropriate, to obtain the shorter distance.
33. **Clear Zone**—the total roadside border area, starting at the edge of the traveled way, that is available for an errant driver to stop or regain control of a vehicle. This area might consist of a shoulder, a recoverable slope, and/or a non-recoverable, traversable slope with a clear run-out area at its toe.
34. **Collector Highway**—a term denoting a highway that in rural areas connects small towns and local highways to arterial highways, and in urban areas provides land access and traffic circulation within residential, commercial, and business areas and connects local highways to the arterial highways.

35. **Concurrent Flow Preferential Lane**—a preferential lane that is operated in the same direction as the adjacent mixed flow lanes, separated from the adjacent general-purpose freeway lanes by a standard lane stripe, painted buffer, or barrier.
36. **Conflict Monitor**—a device used to detect and respond to improper or conflicting signal indications and improper operating voltages in a traffic controller assembly.
37. **Constant Warning Time Detection**—a means of detecting rail traffic that provides relatively uniform warning time for the approach of trains or light rail transit traffic that are not accelerating or decelerating after being detected.
- 37a. **Consulting Engineer** – See **Professional Engineer**. Refer to **California Business and Professions Code Section 6704**.
38. **Contiguous Lane**—a lane, preferential or otherwise, that is separated from the adjacent lane(s) only by a normal or wide lane line marking.
39. **Controller Assembly**—a complete electrical device mounted in a cabinet for controlling the operation of a highway traffic signal.
40. **Controller Unit**—that part of a controller assembly that is devoted to the selection and timing of the display of signal indications.
41. **Conventional Road**—a street or highway other than a low-volume road (as defined in Section 5A.01), expressway, or freeway.
42. **Counter-Flow Lane**—a lane operating in a direction opposite to the normal flow of traffic designated for peak direction of travel during at least a portion of the day. Counter-flow lanes are usually separated from the off-peak direction lanes by tubular markers or other flexible channelizing devices, temporary lane separators, or movable or permanent barrier.
43. **Crashworthy**—a characteristic of a roadside appurtenance that has been successfully crash tested in accordance with a national standard such as the National Cooperative Highway Research Program Report 350, “Recommended Procedures for the Safety Performance Evaluation of Highway Features” or the **Manual for Assessing Safety Hardware (MASH) crash guidelines**.
44. **Crosswalk**—(a) that part of a roadway at an intersection included within the connections of the lateral lines of the sidewalks on opposite sides of the highway measured from the curbs or in the absence of curbs, from the edges of the traversable roadway, and in the absence of a sidewalk on one side of the roadway, the part of a roadway included within the extension of the lateral lines of the sidewalk at right angles to the center line; (b) any portion of a roadway at an intersection or elsewhere distinctly indicated as a pedestrian crossing by pavement marking lines on the surface, which might be supplemented by contrasting pavement texture, style, or color. **As per CVC 275, "Crosswalk" is either: (a) That portion of a roadway included within the prolongation or connection of the boundary lines of sidewalks at intersections where the intersecting roadways meet at approximately right angles, except the prolongation of such lines from an alley across a street. (b) Any portion of a roadway distinctly indicated for pedestrian crossing by lines or other markings on the surface. Notwithstanding the foregoing provisions of this section, there shall not be a crosswalk where local authorities have placed signs indicating no crossing.**
45. **Crosswalk Lines**—white or yellow (in school areas per CVC 21368) pavement marking lines that identify a crosswalk.
46. **Cycle Length**—the time required for one complete sequence of signal indications.
47. **Dark Mode**—the lack of all signal indications at a signalized location. (The dark mode is most commonly associated with power failures, ramp meters, hybrid beacons, beacons, and some movable bridge signals.)
48. **Delineator**—a retroreflective device mounted on the roadway surface or at the side of the roadway in a series to indicate the alignment of the roadway, especially at night or in adverse weather.
- 48a. **Department of Transportation** – **California Department of Transportation or Caltrans**.
49. **Design Vehicle**—the longest vehicle permitted by statute of the road authority (State or other) on that roadway.
50. **Designated Bicycle Route**—a system of bikeways designated by the jurisdiction having authority with appropriate directional and informational route signs, with or without specific bicycle route numbers.

51. **Detectable**—having a continuous edge within 6 inches of the surface so that pedestrians who have visual disabilities can sense its presence and receive usable guidance information.
52. **Detector**—a device used for determining the presence or passage of vehicles (including motorcycles), bicycles or pedestrians.
- 52a. **Divided Highway** – A highway with separated roadbeds for traffic in opposing directions.
53. **Downstream**—a term that refers to a location that is encountered by traffic subsequent to an upstream location as it flows in an “upstream to downstream” direction. For example, “the downstream end of a lane line separating the turn lane from a through lane on the approach to an intersection” is the end of the lane line that is closest to the intersection.
54. **Dropped Lane**—a through lane that becomes a mandatory turn lane on a conventional roadway, or a through lane that becomes a mandatory exit lane on a freeway or expressway. The end of an acceleration lane and reductions in the number of through lanes that do not involve a mandatory turn or exit are not considered dropped lanes.
55. **Dual-Arrow Signal Section**—a type of signal section designed to include both a yellow arrow and a green arrow.
56. **Dynamic Envelope**—the clearance required for light rail transit traffic or a train and its cargo overhang due to any combination of loading, lateral motion, or suspension failure (see Figure 8B-8 8B-6(CA) Sheet 1 of 3).
57. **Dynamic Exit Gate Operating Mode**—a mode of operation where the exit gate operation is based on the presence of vehicles within the minimum track clearance distance.
58. **Edge Line Markings**—white or yellow pavement marking lines that delineate the right or left edge(s) of a traveled way.
- 58a. **Electrical Engineer** – a professional engineer in the branch of electrical engineering and refers to one who practices or offers to practice electrical engineering in any of its phases. Refer to California Business and Professions Code Section 6702.1.
59. **Electronic Toll Collection (ETC)**—a system for automated collection of tolls from moving or stopped vehicles through wireless technologies such as radio-frequency communication or optical scanning. ETC systems are classified as one of the following: (1) systems that require users to have registered toll accounts, with the use of equipment inside or on the exterior of vehicles, such as a transponder or barcode decal, that communicates with or is detected by roadside or overhead receiving equipment, or with the use of license plate optical scanning, to automatically deduct the toll from the registered user account, or (2) systems that do not require users to have registered toll accounts because vehicle license plates are optically scanned and invoices for the toll amount are sent through postal mail to the address of the vehicle owner.
60. **Electronic Toll Collection (ETC) Account-Only Lane**—a non-attended toll lane that is restricted to use only by vehicles with a registered toll payment account.
61. ~~Emergency Vehicle Hybrid Beacon—a special type of hybrid beacon used to warn and control traffic at an unsignalized location to assist authorized emergency vehicles in entering or crossing a street or highway. Refer to CVC 21355.~~
62. **Emergency-Vehicle Traffic Control Signal**—a special traffic control signal that assigns the right-of-way to an authorized emergency vehicle.
63. **End-of-Roadway Marker**—a device used to warn and alert road users of the end of a roadway in other than temporary traffic control zones.
- 63a. **Engineer** – a person registered under California Professional Engineers Act as a professional engineer, including any of the branches thereof. Refer to California Business and Professions Code Section 6706.
- 63b. **Engineering and Traffic Survey** – Refer to CVC 627.
64. **Engineering Judgment**—the evaluation of available pertinent information, and the application of appropriate principles, experience, education, discretion, provisions, and practices as contained in this Manual and other sources, for the purpose of deciding upon the applicability, design, operation, or installation of a traffic control device. Engineering judgment shall be exercised by an engineer, or by an individual working under the supervision of an engineer, through the application of procedures and criteria established by the engineer. Documentation of engineering judgment is not required.

65. **Engineering Study**—the comprehensive analysis and evaluation of available pertinent information, and the application of appropriate principles, **engineering judgment, experience, education, discretion, provisions, and practices** as contained in this Manual and other sources, for the purpose of deciding upon the applicability, design, operation, or installation of a traffic control device. An engineering study shall be performed by an engineer, or by an individual working under the supervision of an engineer, through the application of procedures and criteria established by the engineer. An engineering study shall be documented.
66. **Entrance Gate**—an automatic gate that can be lowered across the lanes approaching a grade crossing to block road users from entering the grade crossing.
67. **Exact Change Lane (Automatic Lane)**—a non-attended toll lane that has a receptacle into which road users deposit coins totaling the exact amount of the toll. Exact Change lanes at toll plazas typically require vehicles to stop to pay the toll.
68. **Exit Gate**—an automatic gate that can be lowered across the lanes departing a grade crossing to block road users from entering the grade crossing by driving in the opposing traffic lanes.
69. **Exit Gate Clearance Time**—for Four-Quadrant Gate systems at grade crossings, the amount of time provided to delay the descent of the exit gate arm(s) after entrance gate arm(s) begin to descend.
70. **Exit Gate Operating Mode**—for Four-Quadrant Gate systems at grade crossings, the mode of control used to govern the operation of the exit gate arms.
71. **Expressway**—a divided highway with partial control of access. **As per CVC 314, an "expressway" is a portion of highway that is part of either of the following: (a) An expressway system established by a county under Section 941.4 of the Streets and Highways Code. (b) An expressway system established by a county before January 1, 1989, as described in subdivision (g) of Section 941.4 of the Streets and Highways Code.**
72. **Flagger**—a person who actively controls the flow of vehicular traffic into and/or through a temporary traffic control zone using hand-signaling devices or an Automated Flagger Assistance Device (AFAD).
73. **Flasher**—a device used to turn highway traffic signal indications on and off at a repetitive rate of approximately once per second.
74. **Flashing**—an operation in which a light source, such as a traffic signal indication, is turned on and off repetitively.
75. **Flashing-Light Signals**—a warning device consisting of two red signal indications arranged horizontally that are activated to flash alternately when rail traffic is approaching or present at a grade crossing.
76. **Flashing Mode**—a mode of operation in which at least one traffic signal indication in each vehicular signal face of a highway traffic signal is turned on and off repetitively.
77. **Freeway**—a divided highway with full control of access. **As per CVC 332, "Freeway" is a highway in respect to which the owners of abutting lands have no right or easement of access to or from their abutting lands or in respect to which such owners have only limited or restricted right or easement of access.**
78. **Full-Actuated Operation**—a type of traffic control signal operation in which all signal phases function on the basis of actuation.
79. **Gate**—an automatically-operated or manually-operated traffic control device that is used to physically obstruct road users such that they are discouraged from proceeding past a particular point on a roadway or pathway, or such that they are discouraged from entering a particular grade crossing, ramp, lane, roadway, or facility.
80. **Grade Crossing**—the general area where a highway and a railroad and/or light rail transit route cross at the same level, within which are included the tracks, highway, and traffic control devices for traffic traversing that area.
81. **Guide Sign**—a sign that shows route designations, destinations, directions, distances, services, points of interest, or other geographical, recreational, or cultural information.
82. **High-Occupancy Vehicle (HOV)**—a motor vehicle carrying at least two or more persons, including carpools, vanpools, and buses.
83. **Highway**—a general term for denoting a public way for purposes of vehicular travel, including the entire area within the right-of-way. **As per CVC 360, "Highway" is a way or place of whatever nature,**

publicly maintained and open to the use of the public for purposes of vehicular travel. Highway includes street. Also, refer to CVC 590 definition of "Street".

84. Highway-Light Rail Transit Grade Crossing—the general area where a highway and a light rail transit route cross at the same level, within which are included the light rail transit tracks, highway, and traffic control devices for traffic traversing that area.
85. Highway-Rail Grade Crossing—the general area where a highway and a railroad cross at the same level, within which are included the railroad tracks, highway, and traffic control devices for highway traffic traversing that area.
86. Highway Traffic Signal—a power-operated traffic control device by which traffic is warned or directed to take some specific action. These devices do not include power-operated signs, steadily-illuminated pavement markers, warning lights (see Section 6F.83), or steady burning electric lamps.
87. HOV Lane—any preferential lane designated for exclusive use by high-occupancy vehicles for all or part of a day—including a designated lane on a freeway, other highway, street, or independent roadway on a separate right-of-way.
88. Hybrid Beacon—a special type of beacon that is intentionally placed in a dark mode (no indications displayed) between periods of operation and, when operated, displays both steady and flashing traffic control signal indications.
89. Inherently Low Emission Vehicle (ILEV)—any kind of vehicle that, because of inherent properties of the fuel system design, will not have significant evaporative emissions, even if its evaporative emission control system has failed.
90. In-Roadway Lights—a special type of highway traffic signal installed in the roadway surface to warn road users that they are approaching a condition on or adjacent to the roadway that might not be readily apparent and might require the road users to slow down and/or come to a stop.
91. Interchange—a system of interconnecting roadways providing for traffic movement between two or more highways that do not intersect at grade.
92. Interconnection—when used in Part 8, the electrical connection between the railroad or light rail transit active warning system and the highway traffic signal controller assembly for the purpose of preemption.
93. Intermediate Interchange—an interchange with an urban or rural route that is not a major or minor interchange as defined in this Section.
94. Intersection—intersection is defined as follows:

As per CVC 365, an "intersection" is the area embraced within the prolongation of the lateral curb lines, or, if none, then the lateral boundary lines of the roadways, of two highways which join one another at approximately right angles or the area within which vehicles traveling upon different highways joining at any other angle may come in conflict.

 - (a) The area embraced within the prolongation or connection of the lateral curb lines, or if none, the lateral boundary lines of the roadways of two highways that join one another at, or approximately at, right angles, or the area within which vehicles traveling on different highways that join at any other angle might come into conflict.
 - (b) The junction of an alley or driveway with a roadway or highway shall not constitute an intersection, unless the roadway or highway at said junction is controlled by a traffic control device.
 - (c) If a highway includes two roadways that are 30 feet or more apart (see definition of Median), then every crossing of each roadway of such divided highway by an intersecting highway shall be a separate intersection.
 - (d) If both intersecting highways include two roadways that are 30 feet or more apart, then every crossing of any two roadways of such highways shall be a separate intersection.
 - (e) At a location controlled by a traffic control signal, regardless of the distance between the separate intersections as defined in (c) and (d) above:
 - (1) If a stop line, yield line, or crosswalk has not been designated on the roadway (within the median) between the separate intersections, the two intersections and the roadway (median) between them shall be considered as one intersection;

- (2) Where a stop line, yield line, or crosswalk is designated on the roadway on the intersection approach, the area within the crosswalk and/or beyond the designated stop line or yield line shall be part of the intersection; and
 - (3) Where a crosswalk is designated on a roadway on the departure from the intersection, the intersection shall include the area extending to the far side of such crosswalk.
- 95. Intersection Control Beacon—a beacon used only at an intersection to control two or more directions of travel.
 - 96. Interval—the part of a signal cycle during which signal indications do not change.
 - 97. Interval Sequence—the order of appearance of signal indications during successive intervals of a signal cycle.
 - 98. Island—a defined area between traffic lanes for control of vehicular movements, for toll collection, or for pedestrian refuge. It includes all end protection and approach treatments. Within an intersection area, a median or an outer separation is considered to be an island.
 - 99. Lane Drop—see Dropped Lane.
 - 100. Lane Line Markings—white pavement marking lines that delineate the separation of traffic lanes that have the same direction of travel on a roadway.
 - 101. Lane-Use Control Signal—a signal face displaying indications to permit or prohibit the use of specific lanes of a roadway or to indicate the impending prohibition of such use.
 - 102. Legend—see Sign Legend.
 - 103. Lens—see Signal Lens.
 - 104. Light Rail Transit Traffic (Light Rail Transit Equipment)—every device in, upon, or by which any person or property can be transported on light rail transit tracks, including single-unit light rail transit cars (such as streetcars and trolleys) and assemblies of multiple light rail transit cars coupled together.
 - 104a. Limit Line - A "limit line" is a solid white line not less than 12 nor more than 24 inches wide, extending across a roadway or any portion thereof to indicate the point at which traffic is required to stop in compliance with legal requirements. Refer to CVC 377.
 - 104b. Limit Line Detection Zone – a Referenced Bicycle-Rider must be detected in a 6 x 6 feet area immediately behind the limit line, centered either in a normal width lane or if the lane is more than 12 feet wide, centered 6 feet from the left lane line. For a lane of 20 feet or greater, two minimum 6 x 6 feet areas shall constitute the Limit Line Detection Zone.
 - 105. Locomotive Horn—an air horn, steam whistle, or similar audible warning device (see 49 CFR Part 229.129) mounted on a locomotive or control cab car. The terms “locomotive horn,” “train whistle,” “locomotive whistle,” and “train horn” are used interchangeably in the railroad industry.
 - 106. Logo—a distinctive emblem or trademark that identifies a commercial business and/or the product or service offered by the business.
 - 107. Longitudinal Markings—pavement markings that are generally placed parallel and adjacent to the flow of traffic such as lane lines, center lines, edge lines, channelizing lines, and others.
 - 108. Louver—see Signal Louver.
 - 109. Major Interchange—an interchange with another freeway or expressway, or an interchange with a high-volume multi-lane highway, principal urban arterial, or major rural route where the interchanging traffic is heavy or includes many road users unfamiliar with the area.
 - 110. Major Street—the street normally carrying the higher volume of vehicular traffic.
 - 111. Malfunction Management Unit—same as Conflict Monitor.
 - 112. Managed Lane—a highway lane or set of lanes, or a highway facility, for which variable operational strategies such as direction of travel, tolling, pricing, and/or vehicle type or occupancy requirements are implemented and managed in real-time in response to changing conditions. Managed lanes are typically buffer- or barrier-separated lanes parallel to the general-purpose lanes of a highway in which access is restricted to designated locations. There are also some highways on which all lanes are managed.
 - 113. Manual Lane—see Attended Lane.
 - 113a. Markings – All lines, words, or symbols, except signs, officially placed within the roadway to regulate, warn or guide traffic.

114. **Maximum Highway Traffic Signal Preemption Time**—the maximum amount of time needed following initiation of the preemption sequence for the highway traffic signals to complete the timing of the right-of-way transfer time, queue clearance time, and separation time.
115. **Median**—the area between two roadways of a divided highway measured from edge of traveled way to edge of traveled way. The median excludes turn lanes. The median width might be different between intersections, interchanges, and at opposite approaches of the same intersection.
116. **Minimum Track Clearance Distance**—for standard two-quadrant warning devices, the minimum track clearance distance is the length along a highway at one or more railroad or light rail transit tracks, measured from the highway stop line, warning device, or 12 feet perpendicular to the track center line, to 6 feet beyond the track(s) measured perpendicular to the far rail, along the center line or edge line of the highway, as appropriate, to obtain the longer distance. For Four-Quadrant Gate systems, the minimum track clearance distance is the length along a highway at one or more railroad or light rail transit tracks, measured either from the highway stop line or entrance warning device, to the point where the rear of the vehicle would be clear of the exit gate arm. In cases where the exit gate arm is parallel to the track(s) and is not perpendicular to the highway, the distance is measured either along the center line or edge line of the highway, as appropriate, to obtain the longer distance.
117. **Minimum Warning Time**—when used in Part 8, the least amount of time active warning devices shall operate prior to the arrival of rail traffic at a grade crossing.
118. **Minor Interchange**—an interchange where traffic is local and very light, such as interchanges with land service access roads. Where the sum of the exit volumes is estimated to be lower than 100 vehicles per day in the design year, the interchange is classified as local.
119. **Minor Street**—the street normally carrying the lower volume of vehicular traffic.
120. **Movable Bridge Resistance Gate**—a type of traffic gate, which is located downstream of the movable bridge warning gate, that provides a physical deterrent to vehicle and/or pedestrian traffic when placed in the appropriate position.
121. **Movable Bridge Signal**—a highway traffic signal installed at a movable bridge to notify traffic to stop during periods when the roadway is closed to allow the bridge to open.
122. **Movable Bridge Warning Gate**—a type of traffic gate designed to warn, but not primarily to block, vehicle and/or pedestrian traffic when placed in the appropriate position.
123. **Multi-Lane**—more than one lane moving in the same direction. A multi-lane street, highway, or roadway has a basic cross-section comprised of two or more through lanes in one or both directions. A multi-lane approach has two or more lanes moving toward the intersection, including turning lanes.
124. **Neutral Area**—the paved area between the channelizing lines separating an entrance or exit ramp or a channelized turn lane or channelized entering lane from the adjacent through lane(s).
- 124a. **Night or Nighttime** – is equivalent of “darkness” defined by CVC Section 280: “Darkness” is any time from one-half hour after sunset to one-half hour before sunrise and any other time when visibility is not sufficient to render clearly discernible any person or vehicle on the highway at a distance of 1000 feet.
- 124b. **Non-motorized Traffic** – Bicycle and pedestrian component of traffic.
125. **Object Marker**—a device used to mark obstructions within or adjacent to the roadway.
126. **Occupancy Requirement**—any restriction that regulates the use of a facility or one or more lanes of a facility for any period of the day based on a specified number of persons in a vehicle.
127. **Occupant**—a person driving or riding in a car, truck, bus, or other vehicle.
128. **Open-Road ETC Lane**—a non-attended lane that is designed to allow toll payments to be electronically collected from vehicles traveling at normal highway speeds. Open-Road ETC lanes are typically physically separated from the toll plaza, often following the alignment of the mainline lanes, with toll plaza lanes for cash toll payments being on a different alignment after diverging from the mainline lanes or a subset thereof.
129. **Open-Road Tolling**—a system designed to allow electronic toll collection (ETC) from vehicles traveling at normal highway speeds. Open-Road Tolling might be used on toll roads or toll facilities in conjunction with toll plazas. Open-Road Tolling is also typically used on managed lanes and on toll facilities that only accept payment by ETC.

130. **Open-Road Tolling Point**—the location along an Open-Road ETC lane at which roadside or overhead detection and receiving equipment are placed and vehicles are electronically assessed a toll.
131. **Opposing Traffic**—vehicles that are traveling in the opposite direction. At an intersection, vehicles entering from an approach that is approximately straight ahead would be considered to be opposing traffic, but vehicles entering from approaches on the left or right would not be considered to be opposing traffic.
132. **Overhead Sign**—a sign that is placed such that a portion or the entirety of the sign or its support is directly above the roadway or shoulder such that vehicles travel below it. Typical installations include signs placed on cantilever arms that extend over the roadway or shoulder, on sign support structures that span the entire width of the pavement, on mast arms or span wires that also support traffic control signals, and on highway bridges that cross over the roadway.
133. **Parking Area**—a parking lot or parking garage that is separated from a roadway. Parallel or angle parking spaces along a roadway are not considered a parking area.
134. **Passive Grade Crossing**—a grade crossing where none of the automatic traffic control devices associated with an Active Grade Crossing Warning System are present and at which the traffic control devices consist entirely of signs and/or markings.
135. **Pathway**—a general term denoting a public way for purposes of travel by authorized users outside the traveled way and physically separated from the roadway by an open space or barrier and either within the highway right-of-way or within an independent alignment. Pathways include shared-use paths, but do not include sidewalks.
136. **Pathway Grade Crossing**—the general area where a pathway and railroad or light rail transit tracks cross at the same level, within which are included the tracks, pathway, and traffic control devices for pathway traffic traversing that area.
137. **Paved**—a bituminous surface treatment, mixed bituminous concrete, or Portland cement concrete roadway surface that has both a structural (weight bearing) and a sealing purpose for the roadway.
138. **Pedestrian**—a person on foot, in a wheelchair, on skates, or on a skateboard. **As per CVC 467, (a) A "pedestrian" is a person who is afoot or who is using any of the following: (1) A means of conveyance propelled by human power other than a bicycle. (2) An electric personal assistive mobility device. (b) "Pedestrian" includes a person who is operating a self-propelled wheelchair, motorized tricycle, or motorized quadricycle and, by reason of physical disability, is otherwise unable to move about as a pedestrian, as specified in subdivision(a).**
139. **Pedestrian Change Interval**—an interval during which the flashing UPRAISED HAND (symbolizing DONT WALK) signal indication is displayed.
140. **Pedestrian Clearance Time**—the time provided for a pedestrian crossing in a crosswalk, after leaving the curb or shoulder, to travel to the far side of the traveled way or to a median.
141. **Pedestrian Facilities**—a general term denoting improvements and provisions made to accommodate or encourage walking.
142. **Pedestrian Hybrid Beacon**— a special type of hybrid beacon used to warn and control traffic at an unsignalized location to assist pedestrians in crossing a street or highway at a marked crosswalk.
143. **Pedestrian Signal Head**—a signal head, which contains the symbols WALKING PERSON (symbolizing WALK) and UPRAISED HAND (symbolizing DONT WALK), that is installed to direct pedestrian traffic at a traffic control signal.
144. **Permissive Mode**—a mode of traffic control signal operation in which left or right turns are permitted to be made after yielding to pedestrians, if any, and/or opposing traffic, if any. When a CIRCULAR GREEN signal indication is displayed, both left and right turns are permitted unless otherwise prohibited by another traffic control device. When a flashing YELLOW ARROW or flashing RED ARROW signal indication is displayed, the turn indicated by the arrow is permitted.
145. **Physical Gore**—a longitudinal point where a physical barrier or the lack of a paved surface inhibits road users from crossing from a ramp or channelized turn lane or channelized entering lane to the adjacent through lane(s) or vice versa.
146. **Pictograph**—a pictorial representation used to identify a governmental jurisdiction, an area of jurisdiction, a governmental agency, a military base or branch of service, a governmental-approved university or college, a toll payment system, or a government-approved institution.

147. **Plaque**—a traffic control device intended to communicate specific information to road users through a word, symbol, or arrow legend that is placed immediately adjacent to a sign to supplement the message on the sign. The difference between a plaque and a sign is that a plaque cannot be used alone. The designation for a plaque includes a “P” suffix.
148. **Platoon**—a group of vehicles or pedestrians traveling together as a group, either voluntarily or involuntarily, because of traffic signal controls, geometrics, or other factors.
149. **Portable Traffic Control Signal**—a temporary traffic control signal that is designed so that it can be easily transported and reused at different locations.
150. **Post-Mounted Sign**—a sign that is placed to the side of the roadway such that no portion of the sign or its support is directly above the roadway or shoulder.
151. **Posted Speed Limit**—a speed limit determined by law or regulation and displayed on Speed Limit signs.
152. **Preemption**—the transfer of normal operation of a traffic control signal to a special control mode of operation.
153. **Preferential Lane**—a highway lane reserved for the exclusive use of one or more specific types of vehicles or vehicles with at least a specific number of occupants.
154. **Pre-Signal**—traffic control signal faces that control traffic approaching a grade crossing in conjunction with the traffic control signal faces that control traffic approaching a highway-highway intersection beyond the tracks. Supplemental near-side traffic control signal faces for the highway-highway intersection are not considered pre-signals. Pre-signals are typically used where the clear storage distance is insufficient to store one or more design vehicles.
155. **Pre-timed Operation**—a type of traffic control signal operation in which none of the signal phases function on the basis of actuation.
156. **Primary Signal Face**—one of the required or recommended minimum number of signal faces for a given approach or separate turning movement, but not including near-side signal faces required as a result of the far-side signal faces exceeding the maximum distance from the stop line.
157. **Principal Legend**—place names, street names, and route numbers placed on guide signs.
158. **Priority Control**—a means by which the assignment of right-of-way is obtained or modified.
159. **Private Road Open to Public Travel**—private toll roads and roads (including any adjacent sidewalks that generally run parallel to the road) within shopping centers, airports, sports arenas, and other similar business and/or recreation facilities that are privately owned, but where the public is allowed to travel without access restrictions. Roads within private gated properties (except for gated toll roads) where access is restricted at all times, parking areas, driving aisles within parking areas, and private grade crossings shall not be included in this definition. [The MUTCD national standard and Caltrans standards and specifications for traffic control devices shall not be applicable to privately owned and maintained roads or commercial establishments, unless the particular city or county enacts an ordinance or resolution to this effect. Refer to CVC Sections 21100, 21100.1, 21107, 21107.5, 21107.6, and 21107.7.](#)
- 159a. **Private Road or Driveway** - "Private road or driveway" is a way or place in private ownership and used for vehicular travel by the owner and those having express or implied permission from the owner but not by other members of the public. Refer to CVC 490.
- 159b. **Professional Engineer** - a person engaged in the professional practice of rendering service or creative work requiring education, training and experience in engineering sciences and the application of special knowledge of the mathematical, physical and engineering sciences in such professional or creative work as consultation, investigation, evaluation, planning or design of public or private utilities, structures, machines, processes, circuits, buildings, equipment or projects, and supervision of construction for the purpose of securing compliance with specifications and design for any such work. Refer to California Business and Professions Code Section 6701.
160. **Protected Mode**—a mode of traffic control signal operation in which left or right turns are permitted to be made when a left or right GREEN ARROW signal indication is displayed.
161. **Public Road**—any road, street, or similar facility under the jurisdiction of and maintained by a public agency and open to public travel ([see definition of private road open to public travel](#)).
162. **Pushbutton**—a button to activate a device or signal timing for pedestrians, bicyclists, or other road users.

163. **Pushbutton Information Message**—a recorded message that can be actuated by pressing a pushbutton when the walk interval is not timing and that provides the name of the street that the crosswalk associated with that particular pushbutton crosses and can also provide other information about the intersection signalization or geometry.
164. **Pushbutton Locator Tone**—a repeating sound that informs approaching pedestrians that a pushbutton exists to actuate pedestrian timing or receive additional information and that enables pedestrians who have visual disabilities to locate the pushbutton.
165. **Queue Clearance Time**—when used in Part 8, the time required for the design vehicle of maximum length stopped just inside the minimum track clearance distance to start up and move through and clear the entire minimum track clearance distance. If pre-signals are present, this time shall be long enough to allow the vehicle to move through the intersection, or to clear the tracks if there is sufficient clear storage distance. If a Four-Quadrant Gate system is present, this time shall be long enough to permit the exit gate arm to lower after the design vehicle is clear of the minimum track clearance distance.
166. **Quiet Zone**—a segment of a rail line, with one or a number of consecutive public highway-rail grade crossings at which locomotive horns are not routinely sounded per 49 CFR Part 222.
167. **Rail Traffic**—every device in, upon, or by which any person or property can be transported on rails or tracks and to which all other traffic must yield the right-of-way by law at grade crossings, including trains, one or more locomotives coupled (with or without cars), other railroad equipment, and light rail transit operating in exclusive or semi-exclusive alignments. Light rail transit operating in a mixed-use alignment, to which other traffic is not required to yield the right-of-way by law, is a vehicle and is not considered to be rail traffic.
168. **Raised Pavement Marker**—a device mounted on or in a road surface that has a height generally not exceeding approximately 1 inch above the road surface for a permanent marker, or not exceeding approximately 2 inches above the road surface for a temporary flexible marker, and that is intended to be used as a positioning guide and/or to supplement or substitute for pavement markings.
169. **Ramp Control Signal**—a highway traffic signal installed to control the flow of traffic onto a freeway at an entrance ramp or at a freeway-to-freeway ramp connection.
170. **Ramp Meter**—see Ramp Control Signal.
171. **Red Clearance Interval**—an interval that follows a yellow change interval and precedes the next conflicting green interval.
- 171a. **Reference Bicycle-Rider** – a minimum 4 feet tall person, weighing minimum 90 lb, riding on an unmodified minimum 16 inch wheel bicycle with non-ferromagnetic frame, non-ferromagnetic fork and cranks, aluminum rims, stainless steel spokes, and headlight.
- 171b. **Registered Engineer** – See Professional Engineer. Refer to California Business and Professions Code Section 6704.
172. **Regulatory Sign**—a sign that gives notice to road users of traffic laws or regulations.
173. **Retroreflectivity**—a property of a surface that allows a large portion of the light coming from a point source to be returned directly back to a point near its origin.
174. **Right-of-Way [Assignment]**—the permitting of vehicles and/or pedestrians to proceed in a lawful manner in preference to other vehicles or pedestrians by the display of a sign or signal indications.
175. **Right-of-Way Transfer Time**—when used in Part 8, the maximum amount of time needed for the worst case condition, prior to display of the track clearance green interval. This includes any railroad or light rail transit or highway traffic signal control equipment time to react to a preemption call, and any traffic control signal green, pedestrian walk and clearance, yellow change, and red clearance intervals for conflicting traffic.
176. **Road**—see Roadway.
177. **Road User**—a vehicle operator, bicyclist, or pedestrian, including persons with disabilities, within the highway or on a private road open to public travel (see definition of private road open to public travel).
178. **Roadway**—that portion of a highway improved, designed, or ordinarily used for vehicular travel and parking lanes, but exclusive of the sidewalk, berm, or shoulder even though such sidewalk, berm, or shoulder is used by persons riding bicycles or other human-powered vehicles. In the event a

- highway includes two or more separate roadways, the term roadway as used in this Manual shall refer to any such roadway separately, but not to all such roadways collectively. Refer to CVC 527.
179. Roadway Network—a geographical arrangement of intersecting roadways.
180. Roundabout—a circular intersection with yield control at entry, which permits a vehicle on the circulatory roadway to proceed, and with deflection of the approaching vehicle counter-clockwise around a central island.
181. Rumble Strip—a series of intermittent, narrow, transverse areas of rough-textured, slightly raised, or depressed road surface that extend across the travel lane to alert road users to unusual traffic conditions or are located along the shoulder, along the roadway center line, or within islands formed by pavement markings to alert road users that they are leaving the travel lanes.
182. Rural Highway—a type of roadway normally characterized by lower volumes, higher speeds, fewer turning conflicts, and less conflict with pedestrians.
183. Safe-Positioned—the positioning of emergency vehicles at an incident in a manner that attempts to protect both the responders performing their duties and road users traveling through the incident scene, while minimizing, to the extent practical, disruption of the adjacent traffic flow.
- 183a. Scenic Highway – An officially designated portion of the State Highway System traversing areas of outstanding scenic beauty which together with the adjacent scenic corridors requires special scenic conservation treatment.
184. School—a public or private educational institution recognized by the state education authority for one or more grades K through 12 or as otherwise defined by the State.
185. School Zone—a designated roadway segment approaching, adjacent to, and beyond school buildings or grounds, or along which school related activities occur. As per CVC 22352(a)(2)(B) When approaching or passing a school building or the grounds thereof, contiguous to a highway and posted with a standard "SCHOOL" warning sign, while children are going to or leaving the school either during school hours or during the noon recess period. The prima facie limit shall also apply when approaching or passing any school grounds which are not separated from the highway by a fence, gate, or other physical barrier while the grounds are in use by children and the highway is posted with a standard "SCHOOL" warning sign.
186. Semi-Actuated Operation—a type of traffic control signal operation in which at least one, but not all, signal phases function on the basis of actuation.
187. Separate Turn Signal Face—a signal face that exclusively controls a turn movement and that displays signal indications that are applicable only to the turn movement.
188. Separation Time—the component of maximum highway traffic signal preemption time during which the minimum track clearance distance is clear of vehicular traffic prior to the arrival of rail traffic.
189. Shared Roadway—a roadway that is officially designated and marked as a bicycle route, but which is open to motor vehicle travel and upon which no bicycle lane is designated. Shared Roadway (No Bikeway Designation) – A roadway that permits bicycle use but is not officially designated as a bikeway.
190. Shared Turn Signal Face—a signal face, for controlling both a turn movement and the adjacent through movement, that always displays the same color of circular signal indication that the adjacent through signal face or faces display.
191. Shared-Use Path (Class I Bikeway) —a bikeway outside the traveled way and physically separated from motorized vehicular traffic by an open space or barrier and either within the highway right-of-way or within an independent alignment. Shared-use paths are also used by pedestrians (including skaters, users of manual and motorized wheelchairs, and joggers) and other authorized motorized and non-motorized users. Refer to the Caltrans' Highway Design Manual Index 1003.1 for design criteria.
- 191a. Shoulder – The portion of the highway contiguous with the roadway for accommodations of pedestrians, bicyclists, stopped vehicles, for emergency use, and for lateral support of base and surface courses.
192. Sidewalk—that portion of a street between the curb line, or the lateral line of a roadway, and the adjacent property line or on easements of private property that is paved or improved and intended for use by pedestrians. As per CVC 555, "Sidewalk" is that portion of a highway, other than the roadway, set apart by curbs, barriers, markings or other delineation for pedestrian travel.

193. **Sign**—any traffic control device that is intended to communicate specific information to road users through a word, symbol, and/or arrow legend. Signs do not include highway traffic signals, pavement markings, delineators, or channelization devices.
194. **Sign Assembly**—a group of signs, located on the same support(s), that supplement one another in conveying information to road users.
195. **Sign Illumination**—either internal or external lighting that shows similar color by day or night. Street or highway lighting shall not be considered as meeting this definition.
196. **Sign Legend**—all word messages, logos, pictographs, and symbol and arrow designs that are intended to convey specific meanings. The border, if any, on a sign is not considered to be a part of the legend.
197. **Sign Panel**—a separate panel or piece of material containing a word, symbol, and/or arrow legend that is affixed to the face of a sign.
198. **Signal Backplate**—a thin strip of material that extends outward from and parallel to a signal face on all sides of a signal housing to provide a background for improved visibility of the signal indications.
199. **Signal Coordination**—the establishment of timed relationships between adjacent traffic control signals.
200. **Signal Face**—an assembly of one or more signal sections that is provided for controlling one or more traffic movements on a single approach.
201. **Signal Head**—an assembly of one or more signal faces that is provided for controlling traffic movements on one or more approaches.
202. **Signal Housing**—that part of a signal section that protects the light source and other required components.
203. **Signal Indication**—the illumination of a signal lens or equivalent device.
204. **Signal Lens**—that part of the signal section that redirects the light coming directly from the light source and its reflector, if any.
205. **Signal Louver**—a device that can be mounted inside a signal visor to restrict visibility of a signal indication from the side or to limit the visibility of the signal indication to a certain lane or lanes, or to a certain distance from the stop line.
206. **Signal Phase**—the right-of-way, yellow change, and red clearance intervals in a cycle that are assigned to an independent traffic movement or combination of movements.
207. **Signal Section**—the assembly of a signal housing, signal lens, if any, and light source with necessary components to be used for displaying one signal indication.
208. **Signal System**—two or more traffic control signals operating in signal coordination.
209. **Signal Timing**—the amount of time allocated for the display of a signal indication.
210. **Signal Visor**—that part of a signal section that directs the signal indication specifically to approaching traffic and reduces the effect of direct external light entering the signal lens.
211. **Signing**—individual signs or a group of signs, not necessarily on the same support(s), that supplement one another in conveying information to road users.
212. **Simultaneous Preemption**—notification of approaching rail traffic is forwarded to the highway traffic signal controller unit or assembly and railroad or light rail transit active warning devices at the same time.
213. **Special Purpose Road**—a low-volume, low-speed road that serves recreational areas or resource development activities.
214. **Speed**—speed is defined based on the following classifications:
 - (a) **Average Speed**—the summation of the instantaneous or spot-measured speeds at a specific location of vehicles divided by the number of vehicles observed.
 - (b) **Design Speed**—a selected speed used to determine the various geometric design features of a roadway.
 - (c) **85th-Percentile Speed**—the speed at or below which 85 percent of the motor vehicles travel.
 - (d) **Operating Speed**—a speed at which a typical vehicle or the overall traffic operates. Operating speed might be defined with speed values such as the average, pace, or 85th-percentile speeds.
 - (e) **Pace**—the 10 mph speed range representing the speeds of the largest percentage of vehicles in the traffic stream.

- 215. **Speed Limit**—the maximum (or minimum) speed applicable to a section of highway as established by law or regulation.
- 216. **Speed Limit Sign Beacon**—a beacon used to supplement a SPEED LIMIT sign.
- 217. **Speed Measurement Markings**—a white transverse pavement marking placed on the roadway to assist the enforcement of speed regulations.
- 218. **Speed Zone**—a section of highway with a speed limit that is established by law or regulation, but which might be different from a legislatively specified statutory speed limit.
- 219. **Splitter Island**—a median island used to separate opposing directions of traffic entering and exiting a roundabout.
- 219a. **State highway – Any highway owned and operated by Caltrans.**
- 220. **Station Crossing**—a pathway grade crossing that is associated with a station platform.
- 221. **Statutory Speed Limit**—a speed limit established by legislative action that typically is applicable for a particular class of highways with specified design, functional, jurisdictional and/or location characteristics and that is not necessarily displayed on Speed Limit signs.
- 222. **Steady (Steady Mode)**—the continuous display of a signal indication for the duration of an interval, signal phase, or consecutive signal phases.
- 223. **Stop Beacon**—a beacon used to supplement a STOP sign, a DO NOT ENTER sign, or a WRONG WAY sign.
- 224. **Stop Line**—a solid white pavement marking line extending across approach lanes to indicate the point at which a stop is intended or required to be made. **For all purposes, limit line(s) as defined per CVC 377 shall mean stop line(s).**
- 225. **Street**—see Highway. **As per CVC 590, "Street" is a way or place of whatever nature, publicly maintained and open to the use of the public for purposes of vehicular travel.**
- 226. **Supplemental Signal Face**—a signal face that is not a primary signal face but which is provided for a given approach or separate turning movement to enhance visibility or conspicuity.
- 227. **Symbol**—the approved design of a pictorial representation of a specific traffic control message for signs, pavement markings, traffic control signals, or other traffic control devices, as shown in the MUTCD.
- 228. **Temporary Traffic Control Signal**—a traffic control signal that is installed for a limited time period.
- 229. **Temporary Traffic Control Zone**—an area of a highway where road user conditions are changed because of a work zone or incident by the use of temporary traffic control devices, flaggers, uniformed law enforcement officers, or other authorized personnel.
- 230. **Theoretical Gore**—a longitudinal point at the upstream end of a neutral area at an exit ramp or channelized turn lane where the channelizing lines that separate the ramp or channelized turn lane from the adjacent through lane(s) begin to diverge, or a longitudinal point at the downstream end of a neutral area at an entrance ramp or channelized entering lane where the channelizing lines that separate the ramp or channelized entering lane from the adjacent through lane(s) intersect each other.
- 231. **Timed Exit Gate Operating Mode**—a mode of operation where the exit gate descent at a grade crossing is based on a predetermined time interval.
- 232. **Toll Booth**—a shelter where a toll attendant is stationed to collect tolls or issue toll tickets. A toll booth is located adjacent to a toll lane and is typically set on a toll island.
- 233. **Toll Island**—a raised island on which a toll booth or other toll collection and related equipment are located.
- 234. **Toll Lane**—an individual lane located within a toll plaza in which a toll payment is collected or, for toll-ticket systems, a toll ticket is issued.
- 235. **Toll Plaza**—the location at which tolls are collected consisting of a grouping of toll booths, toll islands, toll lanes, and, typically, a canopy. Toll plazas might be located on highway mainlines or on interchange ramps. A mainline toll plaza is sometimes referred to as a barrier toll plaza because it interrupts the traffic flow.
- 236. **Toll-Ticket System**—a system in which the user of a toll road receives a ticket from a machine or toll booth attendant upon entering a toll system. The ticket denotes the user's point of entry and, upon

- exiting the toll system, the user surrenders the ticket and is charged a toll based on the distance traveled between the points of entry and exit.
237. **Traffic**—pedestrians, bicyclists, ridden or herded animals, vehicles, streetcars, and other conveyances either singularly or together while using for purposes of travel any highway or private road open to public travel (see definition of private road open to public travel). As per CVC 620, the term "traffic" includes pedestrians, ridden animals, vehicles, street cars, and other conveyances, either singly or together, while using any highway for purposes of travel.
238. **Traffic Control Device**—a sign, signal, marking, or other device used to regulate, warn, or guide traffic, placed on, over, or adjacent to a street, highway, private road open to public travel (see definition of private road open to public travel), pedestrian facility, or shared-use path by authority of a public agency or official having jurisdiction, or, in the case of a private road open to public travel (see definition of private road open to public travel), by authority of the private owner or private official having jurisdiction.
239. **Traffic Control Signal (Traffic Signal)**—any highway traffic signal by which traffic is alternately directed to stop and permitted to proceed.
240. **Train**—one or more locomotives coupled, with or without cars, that operates on rails or tracks and to which all other traffic must yield the right-of-way by law at highway-rail grade crossings.
241. **Transverse Markings**—pavement markings that are generally placed perpendicular and across the flow of traffic such as shoulder markings; word, symbol, and arrow markings; stop lines; crosswalk lines; speed measurement markings; parking space markings; and others.
242. **Traveled Way**—the portion of the roadway for the movement of vehicles, exclusive of the shoulders, berms, sidewalks, and parking lanes.
243. **Turn Bay**—a lane for the exclusive use of turning vehicles that is formed on the approach to the location where the turn is to be made. In most cases where turn bays are provided, drivers who desire to turn must move out of a through lane into the newly formed turn bay in order to turn. A through lane that becomes a turn lane is considered to be a dropped lane rather than a turn bay.
244. **Upstream**—a term that refers to a location that is encountered by traffic prior to a downstream location as it flows in an "upstream to downstream" direction. For example, "the upstream end of a lane line separating the turn lane from a through lane on the approach to an intersection" is the end of the line that is furthest from the intersection.
245. **Urban Street**—a type of street normally characterized by relatively low speeds, wide ranges of traffic volumes, narrower lanes, frequent intersections and driveways, significant pedestrian traffic, and more businesses and houses.
246. **Vehicle**—every device in, upon, or by which any person or property can be transported or drawn upon a highway, except trains and light rail transit operating in exclusive or semi-exclusive alignments. Light rail transit equipment operating in a mixed-use alignment, to which other traffic is not required to yield the right-of-way by law, is a vehicle. As per CVC 670, a "vehicle" is a device by which any person or property may be propelled, moved, or drawn upon a highway, excepting a device moved exclusively by human power or used exclusively upon stationary rails or tracks.
247. **Vibrotactile Pedestrian Device**—an accessible pedestrian signal feature that communicates, by touch, information about pedestrian timing using a vibrating surface.
248. **Visibility-Limited Signal Face or Visibility-Limited Signal Section**—a type of signal face or signal section designed (or shielded, hooded, or louvered) to restrict the visibility of a signal indication from the side, to a certain lane or lanes, or to a certain distance from the stop line.
249. **Walk Interval**—an interval during which the WALKING PERSON (symbolizing WALK) signal indication is displayed.
250. **Warning Beacon**—a beacon used only to supplement an appropriate warning or regulatory sign or marker.
251. **Warning Light**—a portable, powered, yellow, lens-directed, enclosed light that is used in a temporary traffic control zone in either a steady burn or a flashing mode.
252. **Warning Sign**—a sign that gives notice to road users of a situation that might not be readily apparent.

- 253. Warrant**—a warrant describes a threshold condition based upon average or normal conditions that, if found to be satisfied as part of an engineering study, shall result in analysis of other traffic conditions or factors to determine whether a traffic control device or other improvement is justified. Warrants are not a substitute for engineering judgment. The fact that a warrant for a particular traffic control device is met is not conclusive justification for the installation of the device.
- 254. Wayside Equipment**—the signals, switches, and/or control devices for railroad or light rail transit operations housed within one or more enclosures located along the railroad or light rail transit right-of-way and/or on railroad or light rail transit property.
- 255. Wayside Horn System**—a stationary horn (or series of horns) located at a grade crossing that is used in conjunction with train-activated or light rail transit-activated warning systems to provide audible warning of approaching rail traffic to road users on the highway or pathway approaches to a grade crossing, either as a supplement or alternative to the sounding of a locomotive horn.
- 256. Worker**—a person on foot whose duties place him or her within the right-of-way of a street, highway, or pathway, such as street, highway, or pathway construction and maintenance forces, survey crews, utility crews, responders to incidents within the street, highway, or pathway right-of-way, and law enforcement personnel when directing traffic, investigating crashes, and handling lane closures, obstructed roadways, and disasters within the right-of-way of a street, highway, or pathway.
- 257. Wrong-Way Arrow**—a slender, elongated, white pavement marking arrow placed upstream from the ramp terminus to indicate the correct direction of traffic flow. Wrong-way arrows are intended primarily to warn wrong-way road users that they are going in the wrong direction.
- 258. Yellow Change Interval**—the first interval following the green or flashing arrow interval during which the steady yellow signal indication is displayed.
- 259. Yield Line**—a row of solid white isosceles triangles pointing toward approaching vehicles extending across approach lanes to indicate the point at which the yield is intended or required to be made.

Support:

⁰⁴ The following terms are defined in the California Vehicle Code:

- 1. Alley - Section 110.
- 2. Amber - Section 112.
- 3. Authorized Emergency Vehicle - Section 165.
- 4. Automated Enforcement System - Section 210.
- 5. Axle - Section 230.
- 6. Bicycle - Section 231.
- 7. Bicycle Path - Section 231.5
- 8. Bicycle Path Crossing – Section 231.6
- 9. Bus - Section 233.
- 10. Business District - Section 235.
- 11. Business and Residence Districts: Determination – Section 240
- 12. Clean Fuel Vehicle - Section 257.
- 13. Commercial Vehicle - Section 260.
- 14. Crosswalk - Section 275.
- 15. Darkness – Section 280
- 16. Department of Transportation - Section 291.
- 17. Disabled Person - Section 295.5.
- 18. Engineering and Traffic Survey - Section 627.
- 19. Expressway – Section 314.
- 20. Freeway - Section 332.
- 21. Golf Cart - Section 345.
- 22. Hazardous Material - Section 353.
- 23. Highway - Section 360.
- 24. Intersection - Section 365.
- 25. Limit Line - Section 377.
- 26. Liquefied Petroleum Gas – Section 380.

27. Local Authorities - Section 385.
28. Low Speed Vehicle – Section 385.5.
29. Motorcycle - Section 400.
30. Motor-Driven Cycle – Section 405.
31. Motorized Bicycle – Section 406.
32. Motorized Quadricycle and Motorized Tricycle – Section 407.
33. Motorized Scooter – Section 407.5.
34. Motor Vehicle - Section 415.
35. Official Traffic Control Device - Section 440.
36. Official Traffic Control Signal - Section 445.
37. Park or Parking - Section 463.
38. Pedestrian - Section 467.
39. Pickup Truck - Section 471.
40. Pilot Car – Section 472.
41. Pocket Bike – Section 473.
42. Private Road or Driveway - Section 490.
43. Private School - Section 492.
44. Residence District – Section 515.
45. Ridesharing – Section 522.
46. Right-of-way – Section 525.
47. Road - Section 527.
48. Roadway - Section 530.
49. Safety Zone – Section 540.
50. Schoolbus - Section 545.
51. Sidewalk - Section 555.
52. Snowmobile - Section 557.
53. Stop or Stopping - Section 587.
54. Street - Section 590.
55. Street or Highway - Section 591.
56. Street or Highway – Highway Exclusion - Section 592.
57. Through Highway - Section 600.
58. Toll Highway or Toll Road – Section 611.
59. Traffic - Section 620.
60. Trailer - Section 630.
61. U-Turn - Section 665.5.
62. Vehicle - Section 670.

Section 1A.14 Meanings of Acronyms and Abbreviations in this Manual

Standard:

01 The following acronyms and abbreviations, when used in this Manual, shall have the following meanings:

- 1. AADT—annual average daily traffic**
- 2. AASHTO—American Association of State Highway and Transportation Officials**
- 3. ADA—Americans with Disabilities Act**
- 4. ADAAG—Americans with Disabilities Accessibility Guidelines**
- 5. ADT—average daily traffic**
- 6. AFAD—Automated Flagger Assistance Device**
- 7. ANSI—American National Standards Institute**
- 8. CFR—Code of Federal Regulations**
- 9. CMS—changeable message sign**
- 10. dBA—A-weighted decibels**
- 11. EPA—Environmental Protection Agency**

12. ETC—electronic toll collection
13. EV—electric vehicle
14. FHWA—Federal Highway Administration
15. FRA—Federal Railroad Administration
16. FTA—Federal Transit Administration
17. HOT—high occupancy tolls
18. HOTM—FHWA's Office of Transportation Management
19. HOTO—FHWA's Office of Transportation Operations
20. HOV—high-occupancy vehicle
21. ILEV—inherently low emission vehicle
22. ISEA—International Safety Equipment Association
23. ITE—Institute of Transportation Engineers
24. ITS—intelligent transportation systems
25. LED—light emitting diode
26. LP—liquid petroleum
27. MPH or mph—miles per hour
28. MUTCD—Manual on Uniform Traffic Control Devices
29. NCHRP—National Cooperative Highway Research Program
30. ORT—open-road tolling
31. PCMS—portable changeable message sign
32. PRT—perception-response time
33. RPM—raised pavement marker
34. RRPM—raised retroreflective pavement marker
35. RV—recreational vehicle
36. TDD—telecommunication devices for the deaf
37. TRB—Transportation Research Board
38. TTC—temporary traffic control
39. U.S.—United States
40. U.S.C.—United States Code
41. USDOT—United States Department of Transportation
42. UVC—Uniform Vehicle Code
43. VPH or vph—vehicles per hour

Support:

⁰² The following list of acronyms are related to traffic control devices and provided for ease of use and as a handy reference:

1. AADT Average Annual Daily Traffic
2. AASHTO American Association of State Highway and Transportation Officials
3. ADA Americans with Disabilities Act
4. ADT Average Daily Traffic
5. AHS Automated Highway System
6. Alt Alternate
7. AMBER Use of CMS signs for child abduction alert messages
8. AMIS Automated Management Information System
9. ANSI American National Standards Institute
10. APWA American Public Works Association
11. ASCE American Society of Civil Engineers
12. ASTM American Society for Testing and Materials
13. ATIS Advanced Traveler Information Systems
14. ATMS Advanced Traffic Management System
15. ATSSA American Traffic Safety Services Association
16. AVCS Automated Vehicle Control System
17. BART Bay Area Rapid Transit
18. BT&H Business, Transportation & Housing Agency

19. CA	California
20. CAC	California Administrative Code
21. Cal/OSHA	California Occupational Safety and Health Administration
22. CA MUTCD	California Manual on Uniform Traffic Control Devices for Streets and Highways
23. Caltrans	California Department of Transportation
24. CBD	Central Business District
25. CCMP	County Congestion Management Plan
26. CCO	Contract Change Order
27. CCR	California Code of Regulations
28. CDC	California Department of Conservation
29. CDF	California Department of Forestry
30. CDFW	California Department of Fish and Wildlife
31. CEAC	County Engineers Association of California
32. CELSOC	Consulting Engineering and Land Surveyors of California
33. CFR	Code of Federal Regulations
34. CHIN	California Highway Information Network
35. CHP	California Highway Patrol
36. CMA	Congestion Management Agency
37. CMP	Congestion Management Program
38. CMS	Changeable Message Sign or Congestion Management System
39. COB	Close of Business
40. COZEEP	Construction Zone Enhanced Enforcement Program
41. CPC	California Penal Code
42. CPH	California Permit Handbook
43. CPM	Critical Path Method
44. CPUC	California Public Utilities Commission
45. CRHR	California Register of Historical Resources
46. CT	Caltrans or California Department of Transportation
47. CTA	California Trucking Association
48. CTC	California Transportation Commission
49. CTCDC	California Traffic Control Devices Committee
50. CTP	California Transportation Plan
51. CURE	Clean-up Roadside Environment
52. CVC	California Vehicle Code
53. Del	Delineator
54. DHV	Design Hourly Volume
55. DI	Delay Index, Drop Inlet or Drainage Inlet
56. DIB	Design Information Bulletin
57. DMV	Department of Motor Vehicles
58. DOT	Department of Transportation
59. DTO	Division of Traffic Operations
60. DYS	Double Yellow Stripe
61. ENGR	Engineer or Engineering
62. EP	Edge of Pavement or Environmental Planning
63. ES	Edge of Shoulder or End Section
64. ESA	Environmentally Sensitive Area or Endangered Species Act
65. ESAL	Equivalent Single-Axle Loads
66. ETW	Edge of Traveled Way
67. Exp or EXP	Expressway
68. F&E System	Freeway and Expressway System
69. FAI	Federal-aid Interstate
70. FAP	Federal-aid Primary
71. FCC	Federal Communication Commission

72. FEBT	Facing Eastbound Traffic
73. FHWA	Federal Highway Administration
74. FNBT	Facing Northbound Traffic
75. FR	Federal Register
76. Fr Rd	Frontage Road
77. FS	Far Side
78. FSBT	Facing Southbound Traffic
79. FSP	Freeway Service Patrol
80. FWBT	Facing Westbound Traffic
81. Fwy or FWY	Freeway
82. GR	Guard Railing
83. HAR	Highway Advisory Radio
84. HAZMAT	Hazardous Material
85. HCM	Highway Capacity Manual
86. HDM	Highway Design Manual
87. HOT	High Occupancy Toll
88. HOV	High-Occupancy Vehicle
89. HOVL	High-Occupancy Vehicle Lane
90. HM	Hazardous Material
91. HQ	Caltrans Headquarters
92. HW	Hazardous Waste
93. Hwy or HWY	Highway
94. IGR	Intergovernmental Review
95. ILEV	Inherently Low Emission Vehicle
96. IRLs	In-Roadway Lights
97. IRWLs	In-Roadway Warning Lights
98. ISO	International Standards Organization
99. ISTEA	Intermodal Surface Transportation Efficiency Act of 1991 (Federal)
100.ITE	Institute of Transportation Engineers
101.ITS	Intelligent Transportation Systems or Institute of Transportation Studies
102.ITTE	Institute of Transportation & Traffic Engineering
103.IVHS	Intelligent Vehicle Highway System
104.KP	Kilometer Post
105.LED	Light Emitting Diode
106.LF	Linear Foot
107.Ln or LN	Lane
108.Loc or LOC	Location
109.LOS	Level of service (Traffic Congestion Measure)
110.LPA	Local Public Agency
111.LRT	Light Rail Transit
112.MADT	Monthly Average Daily Traffic
113.Maint	Maintenance
114.Max or MAX	Maximum
115.MAZEPP	Maintenance Zone Enhanced Enforcement Program
116.MBGR	Metal Beam Guard Rail
117.Med or MED	Median
118.MF	Mixed Flow
119.mi or MI	Mile or Miles
120.Min or MIN	Minimum
121.Misc or MISC	Miscellaneous
122.mm	Millimeter
123.mph or MPH	Miles per Hour
124.MPO	Metropolitan Planning Organization

125.MT	Mass Transit
126.MTC	Metropolitan Transportation Commission (for the San Francisco Bay Area)
127.MUTCD	Manual on Uniform Traffic Control Devices
128.MVM	Per Million Vehicle Miles
129.NCEES	National Council of Examiners for Engineering and Surveying
130.NCHRP	National Cooperative Highway Research Program
131.NCRP	National Cooperative Research Program
132.NCUT	National Committee on Urban Transportation
133.NCUTCD	National Committee on Uniform Traffic Control Devices
134.NCUTLO	National Committee on Uniform Traffic Laws and Ordinances
135.NHI	National Highway Institute
136.NHL	National Historic Landmark
137.NHS	National Highway System
138.NHSB	National Highway Safety Bureau
139.NHTSA	National Highway Traffic Safety Administration
140.NNIH	National Network of Interstate Highways
141.NPRM	Notice of Proposed Rule Making
142.NPS	National Park Service (U.S.)
143.NR	National Register (of Historic Places, abbreviation)
144.NRHP	National Register of Historic Places
145.NS	Near Side
146.NTS	National Transportation System or Not To Scale
147.NTSB	National Transportation Safety Board
148.O & D	Origin and Destination
149.OCTA	Orange County Transportation Authority
150.ODA	Outdoor Advertising (Act)
151.OES	Office of Emergency Services
152.OG	Original Ground
153.OH	Overhead (Structure)
154.OHP	Office of Historic Preservation
155.OSA	Office of the State Architect
156.OSHA	Occupational Safety and Health Administration
157.P2P	Peer-to-Peer Program
158.P&P	Policy & Procedure
159.PCH	Pacific Coast Highway
160.PCMS	Portable Changeable Message Sign
161.PDO	Property Damage Only
162.PE	Professional Engineer or Project Engineer
163.Ped or PED	Pedestrian
164.PHF	Peak Hour Factor
165.PHI	Point of Historic Interest
166.PM	Post Mile
167.PMS	Pavement Management System
168.PMT	Passenger Miles Traveled
169.PS&E	Plans, Specifications, and Estimate
170.Pvmt or PVMT	Pavement
171.PUC	California Public Utilities Commission
172.R&D	Research and Development
173.RCE	Registered Civil Engineer
174.RE	Resident Engineer or Right of Entry
175.ROW	Right of Way
176.RR	Railroad
177.Rte or RTE	Route or Registered Traffic Engineer

178.RV	Recreational Vehicle
179.R/W	Right of Way
180.Rwy	Railway
181.RXR	Railroad Crossing
182.S&H Code	Streets & Highways Code
183.SACOG	Sacramento Area Council of Governments
184.SAFE	Service Authority for Freeways & Expressways
185.SB	Southbound or Senate Bill
186.SCAG	Southern California Association of Governments
187.SCRRA	Southern California Regional Rail Authority
188.SCRTD	Southern California Rapid Transit District
189.SHELL	State Highway Extra Legal Loads
190.SHL	State Historical Landmark
191.SHOPP	State Highway Operation and Protection Program
192.SHS	Standard Highway Signs and Markings book (FHWA)
193.SI	Safety Index or International System of Units (Metric)
194.SR	State Route or Senate Resolution
195.SRRA	Safety Roadside Rest Area
196.SSD	Stopping Sight Distance
197.SSP's	Standard Special Provisions
198.STA	State Transit Assistance
199.STIP	State Transportation Improvement Program
200.Str or STR	Structure
201.SW	Sidewalk or Soundwall
202.SWITRS	Statewide Integrated Traffic Records Systems
203.TASAS	Traffic Accident Surveillance and Analysis System
204.TC	Traffic Control
205.TCM	Transportation Control Measure
206.TCP	Traffic/Transportation Control Plan
207.TEA21	Transportation Efficiency Act for the 21st Century
208.Temp or TEMP	Temporary
209.TI	Traffic Index
210.TM	Caltrans Traffic Manual
211.TMC	Traffic Management Center
212.TMP	Transportation Management Plan
213.TMT	Traffic Management Team
214.TODS	Tourist-Oriented Directional Signs
215.TOPD	Traffic Operations Policy Directives
216.TOS	Traffic Operations System
217.TRB	Transportation Research Board
218.TS	Traffic Signal
219.TSS	Caltrans Traffic Sign Specifications
220.TTC	Temporary Traffic Control
221.UC	Under Crossing
222.UP	Underpass
223.UPRR	Union Pacific Railroad
224.URR	Urban Rail Transit Program (State)
225.USA	Underground Service Alert
226.USC	United States Code (Federal)
227.USCE	United States (Army) Corps of Engineers (Federal)
228.USDOT	United States Department of Transportation
229.VMS	Variable Message Sign
230.VMT	Vehicle Miles Traveled

231.vph or VPH	Vehicles Per Hour
232.vphpl or VPHPL	Vehicles Per Hour Per Lane
233.WATCH	Work Area Traffic Control Handbook
234.WIM	Weigh-in Motion
235.WS	White Stripe
236.Xing or XING	Crossing
237.YS	Yellow Stripe

Section 1A.15 Abbreviations Used on Traffic Control Devices

Standard:

01 When the word messages shown in Table 1A-1 need to be abbreviated in connection with traffic control devices, the abbreviations shown in Table 1A-1 shall be used.

02 When the word messages shown in Table 1A-2 need to be abbreviated on a portable changeable message sign, the abbreviations shown in Table 1A-2 shall be used. Unless indicated by an asterisk, these abbreviations shall only be used on portable changeable message signs.

Guidance:

03 The abbreviations for the words listed in Table 1A-2 that also show a prompt word should not be used on a portable changeable message sign unless the prompt word shown in Table 1A-2 either precedes or follows the abbreviation, as applicable.

Standard:

04 The abbreviations shown in Table 1A-3 shall not be used in connection with traffic control devices because of their potential to be misinterpreted by road users.

Guidance:

05 If multiple abbreviations are permitted in Table 1A-1 or 1A-2, the same abbreviation should be used throughout a single jurisdiction.

06 Except as otherwise provided in Table 1A-1 or 1A-2 or unless necessary to avoid confusion, periods, commas, apostrophes, question marks, ampersands, and other punctuation marks or characters that are not letters or numerals should not be used in any abbreviation.

Figure 1A-1. Process for Requesting and Conducting Experimentations for New Traffic Control Devices

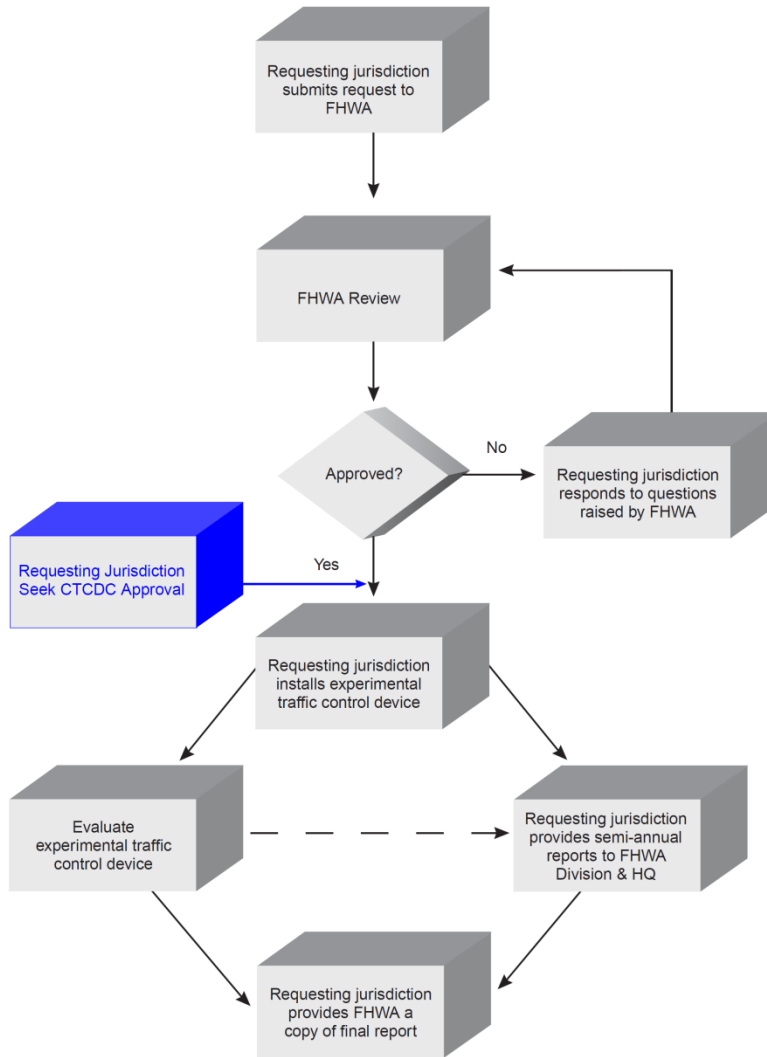


Figure 1A-1 (CA). Process for Requesting and Conducting Experimentations for New Traffic Control Devices in California

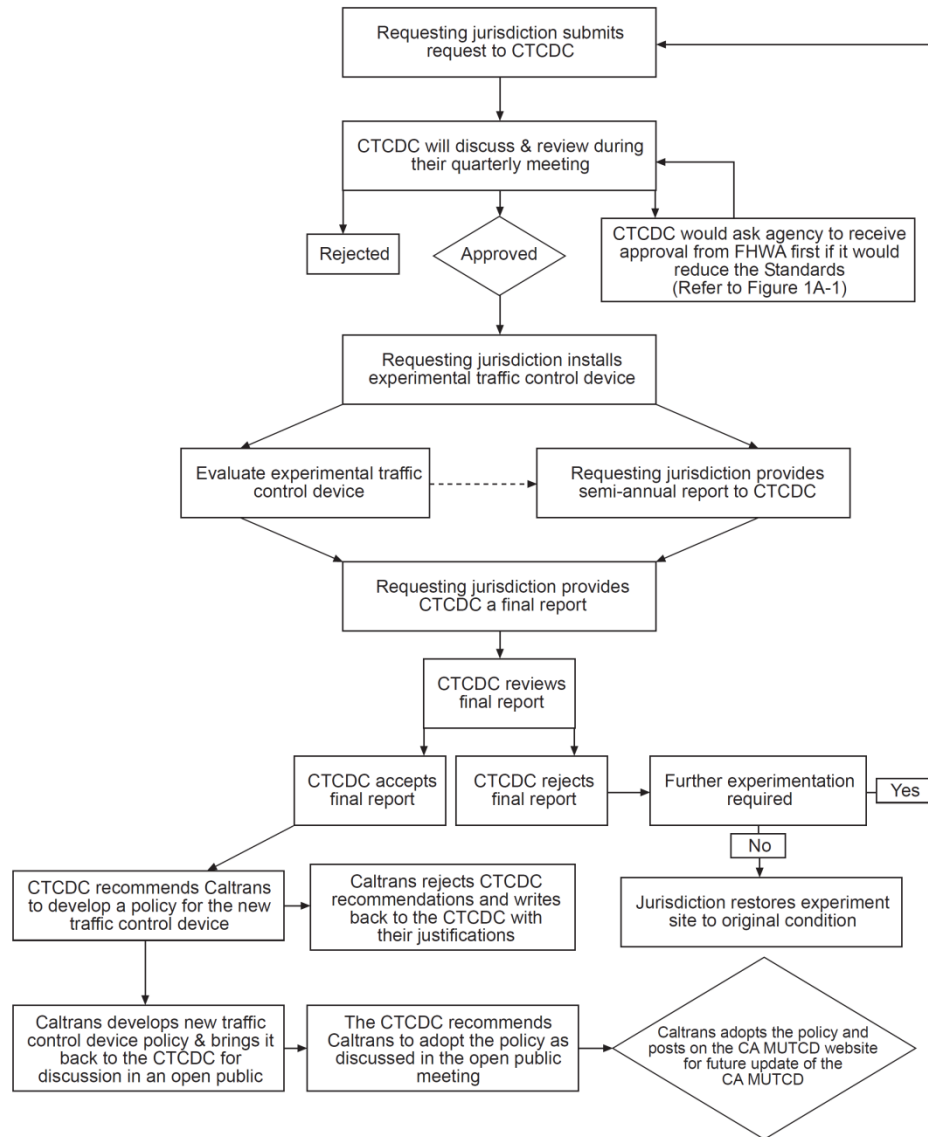


Figure 1A-2. Process for Incorporating New Traffic Control Devices into the MUTCD

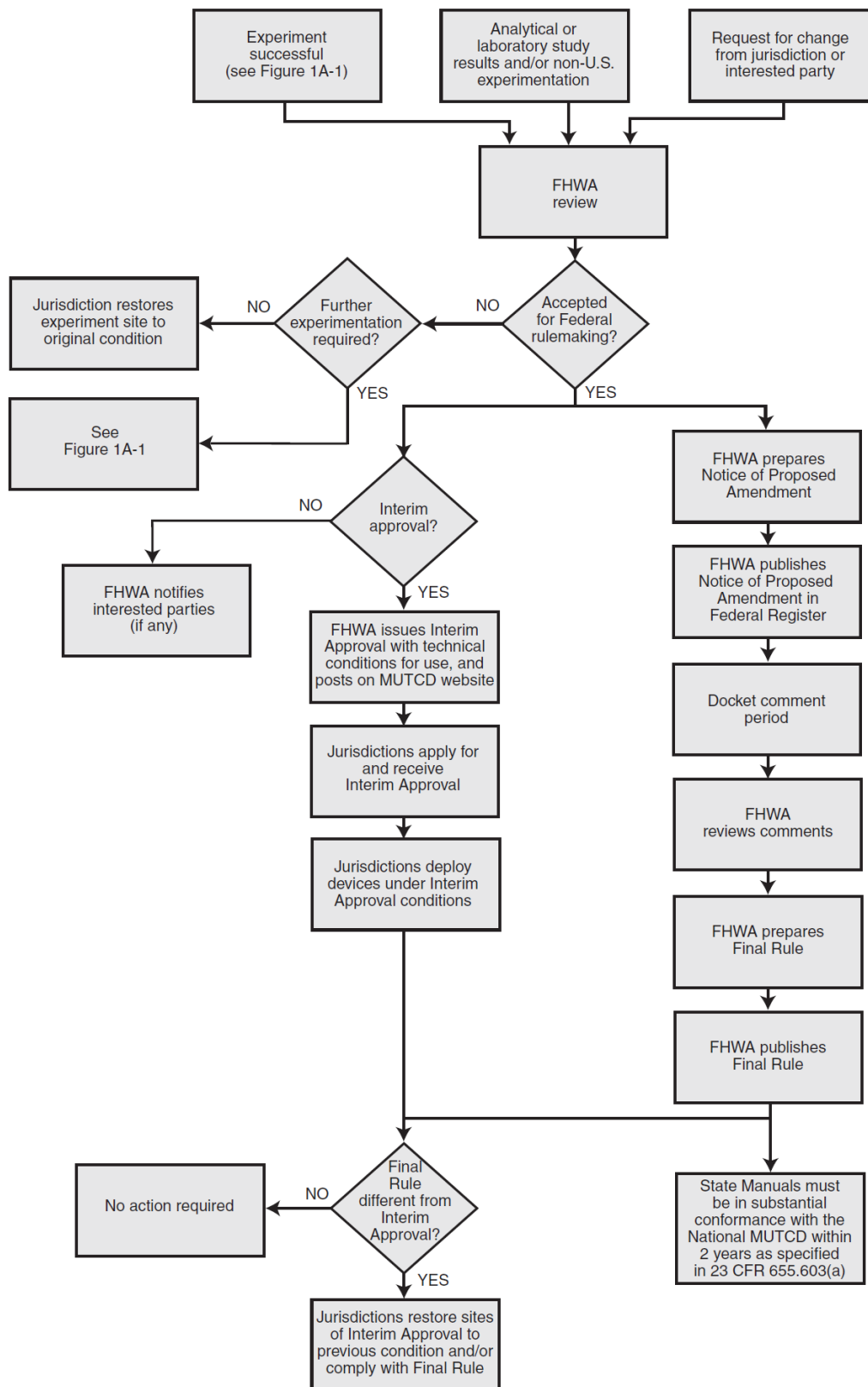


Figure 1A-101 (CA). Process for the Use of Traffic Control Devices in California Approved as Interim Approval (IA) by FHWA

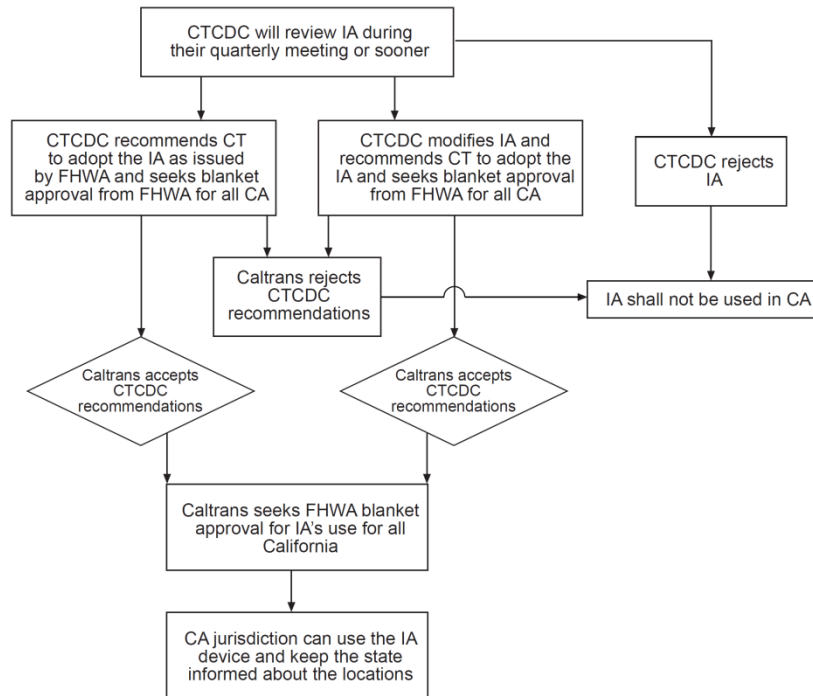


Table 1A-1. Acceptable Abbreviations

Word Message	Standard Abbreviation
Afternoon / Evening	PM
Alternate	ALT
AM Radio	AM
Avenue	AVE, AV
Bicycle	BIKE
Boulevard	BLVD*
Bridge	(See Table 1A-2)
CB Radio	CB
Center (as part of a place name)	CTR
Circle	CIR*
Civil Defense	CD
Compressed Natural Gas	CNG
Court	CT*
Crossing (other than highway-rail)	X-ING
Drive	DR*
East	E
Electric Vehicle	EV
Expressway	EXPWY*
Feet	FT
FM Radio	FM
Freeway	FRWY, FWY*
Friday	FRI
Hazardous Material	HAZMAT
High Occupancy Vehicle	HOV

Word Message	Standard Abbreviation
Highway	HWY*
Hospital	HOSP
Hour(s)	HR, HRS
Information	INFO
Inherently Low Emission Vehicle	ILEV
International	INTL
Interstate	(See Table 1A-2)
Junction / Intersection	JCT
Lane	(See Table 1A-2)
Liquid Propane Gas	LP-GAS
Maximum	MAX
Mile(s)	MI
Miles Per Hour	MPH
Minimum	MIN
Minute(s)	MIN
Monday	MON
Morning / Late Night	AM
Mount	MT
Mountain	MTN
National	NATL
North	N
Parkway	PKWY*
Pedestrian	PED
Place	PL*

Word Message	Standard Abbreviation
Pounds	LBS
Road	RD*
Saint	ST
Saturday	SAT
South	S
State, county, or other non-US or non-Interstate numbered route	(See Table 1A-2)
Street	ST*
Sunday	SUN
Telephone	PHONE
Temporary	TEMP
Terrace	TER*
Thursday	THURS
Thruway	THWY*
Tons of Weight	T
Trail	TR*
Tuesday	TUES
Turnpike	TPK*
Two-Way Intersection	2-WAY
US Numbered Route	US
Wednesday	WED
West	W

*This abbreviation shall not be used for any application other than the name of a roadway.

Table 1A-2. Abbreviations That Shall be Used Only on Portable Changeable Message Signs

Word Message	Standard Abbreviation	Prompt Word That Should Precede the Abbreviation	Prompt Word That Should Follow the Abbreviation
Access	ACCS	—	Road
Ahead	AHD	Fog	—
Blocked	BLKD	Lane	—
Bridge	BR*	[Name]	—
Cannot	CANT	—	—
Center	CNTR	—	Lane
Chemical	CHEM	—	Spill
Condition	COND	Traffic	—
Congested	CONG	Traffic	—
Construction	CONST	—	Ahead
Crossing	XING	—	—
Do Not	DONT	—	—
Downtown	DWNTN	—	Traffic
Eastbound	E-BND	—	—
Emergency	EMER	—	—
Entrance, Enter	ENT	—	—
Exit	EX	Next	—
Express	EXP	—	Lane
Frontage	FRNTG	—	Road
Hazardous	HAZ	—	Driving
Highway-Rail Grade Crossing	RR XING	—	—
Interstate	I-*	—	[Number]
It Is	ITS	—	—
Lane	LN	[Roadway Name]*, Right, Left, Center	—
Left	LFT	—	—
Local	LOC	—	Traffic
Lower	LWR	—	Level
Maintenance	MAINT	—	—
Major	MAJ	—	Accident
Minor	MNR	—	Accident
Normal	NORM	—	—
Northbound	N-BND	—	—
Oversized	OVRSZ	—	Load
Parking	PKING	—	—
Pavement	PVMT	Wet	—
Prepare	PREP	—	To Stop
Quality	QLTY	Air	—
Right	RT	Keep, Next	—
Right	RT	—	Lane
Roadwork	RDWK	—	Ahead, [Distance]
Route	RT, RTE	Best	—
Service	SERV	—	—
Shoulder	SHLDR	—	—
Slippery	SLIP	—	—
Southbound	S-BND	—	—
Speed	SPD	—	—
State, county, or other non-US or non-Interstate numbered route	[Route Abbreviation determined by highway agency]**	—	[Number]
Tires With Lugs	LUGS	—	—
Traffic	TRAF	—	—
Travelers	TRVLRS	—	—
Two-Wheeled Vehicles	CYCLES	—	—
Upper	UPR	—	Level
Vehicle(s)	VEH, VEHS	—	—
Warning	WARN	—	—
Westbound	W-BND	—	—
Will Not	WONT	—	—

* This abbreviation, when accompanied by the prompt word, may be used on traffic control devices other than portable changeable message signs.

** A space and no dash shall be placed between the abbreviation and the number of the route.

Table 1A-3. Unacceptable Abbreviations

Abbreviation	Intended Word	Common Misinterpretation
ACC	Accident	Access (Road)
CLRS	Clears	Colors
DLY	Delay	Daily
FDR	Feeder	Federal
L	Left	Lane (Merge)
LT	Light (Traffic)	Left
PARK	Parking	Park
POLL	Pollution (Index)	Poll
RED	Reduce	Red
STAD	Stadium	Standard
WRNG	Warning	Wrong