

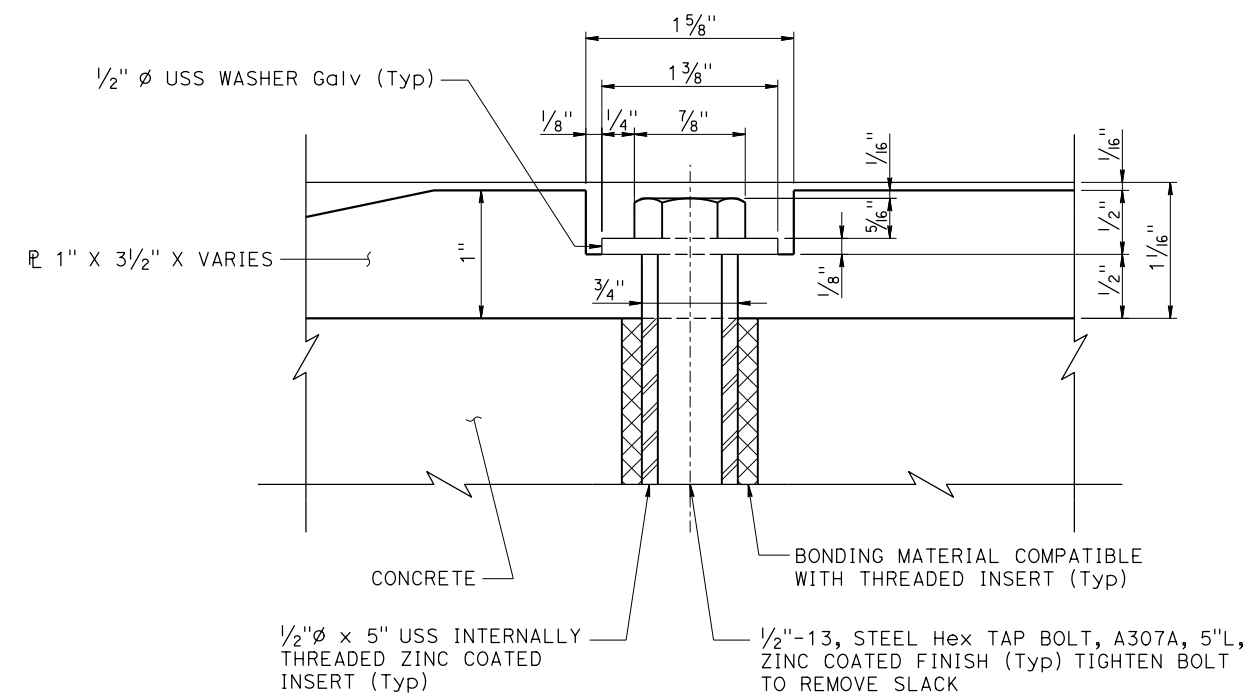
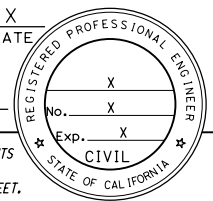
Dist	COUNTY	ROUTE	POST MILES TOTAL PROJECT	SHEET No.	TOTAL SHEETS
DDDD	CCCC	RRRR	PPPP	????	####

REGISTERED CIVIL ENGINEER X
DATE _____

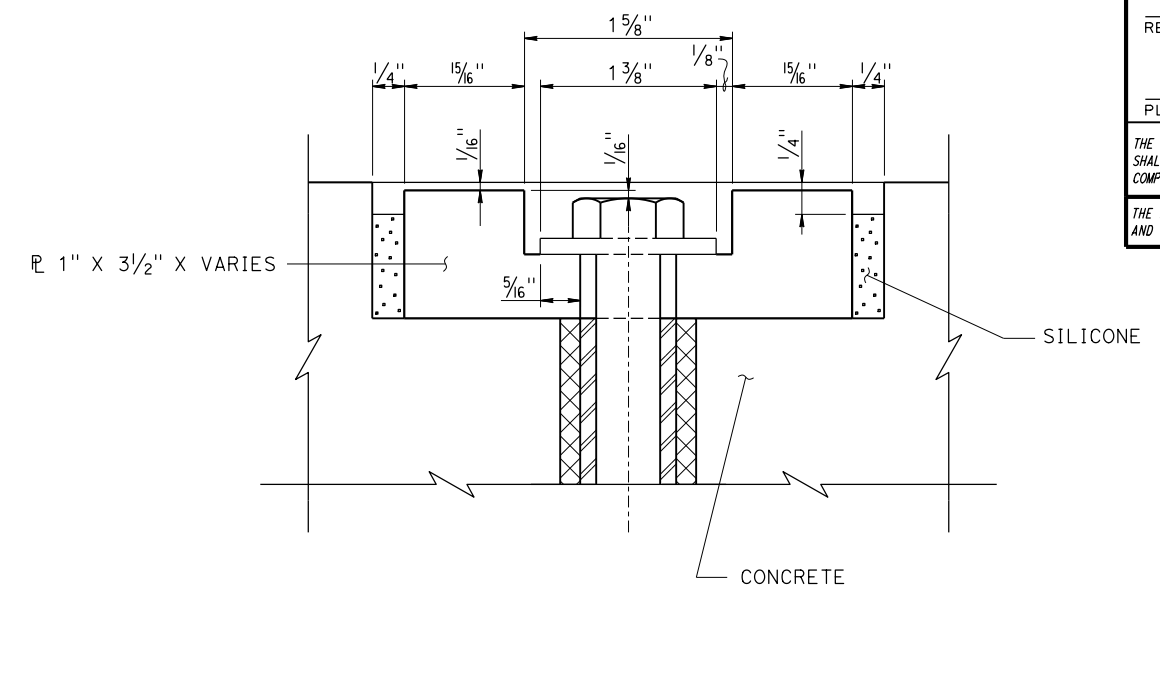
MM/DD/YYYY
PLANS APPROVAL DATE _____

THE STATE OF CALIFORNIA OR ITS OFFICERS OR AGENTS SHALL NOT BE RESPONSIBLE FOR THE ACCURACY OR COMPLETENESS OF SCANNED COPIES OF THIS PLAN SHEET.

THE REGISTERED CIVIL ENGINEER FOR THE PROJECT IS RESPONSIBLE FOR THE SELECTION AND PROPER APPLICATION OF THE COMPONENT DESIGN AND ANY MODIFICATIONS SHOWN.

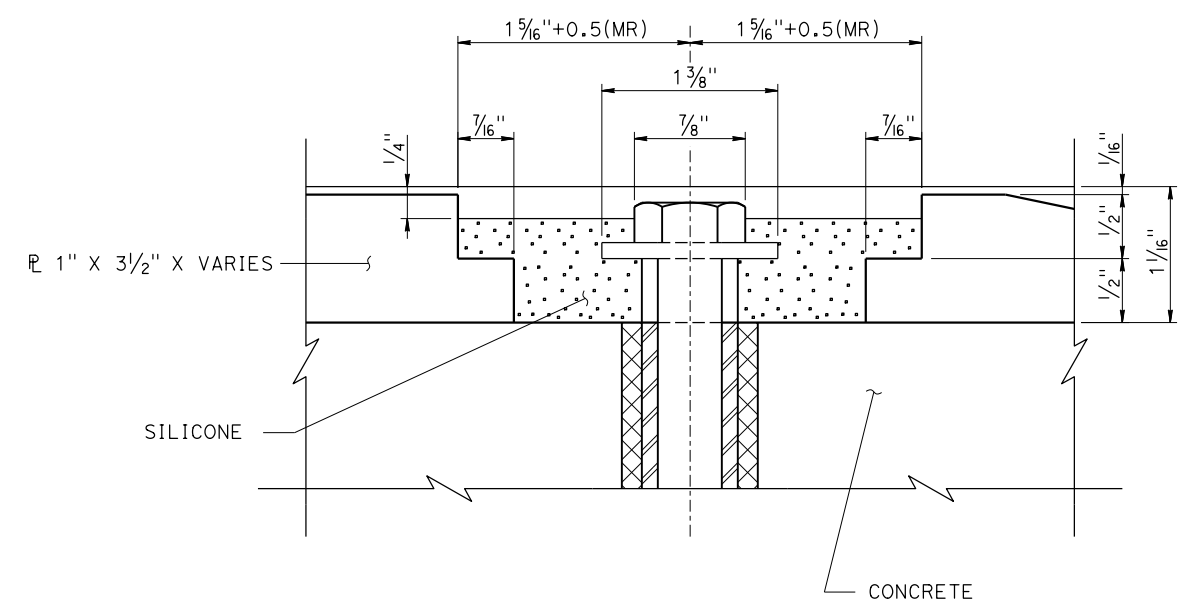


SECTION B-B
16" = 1'-0"

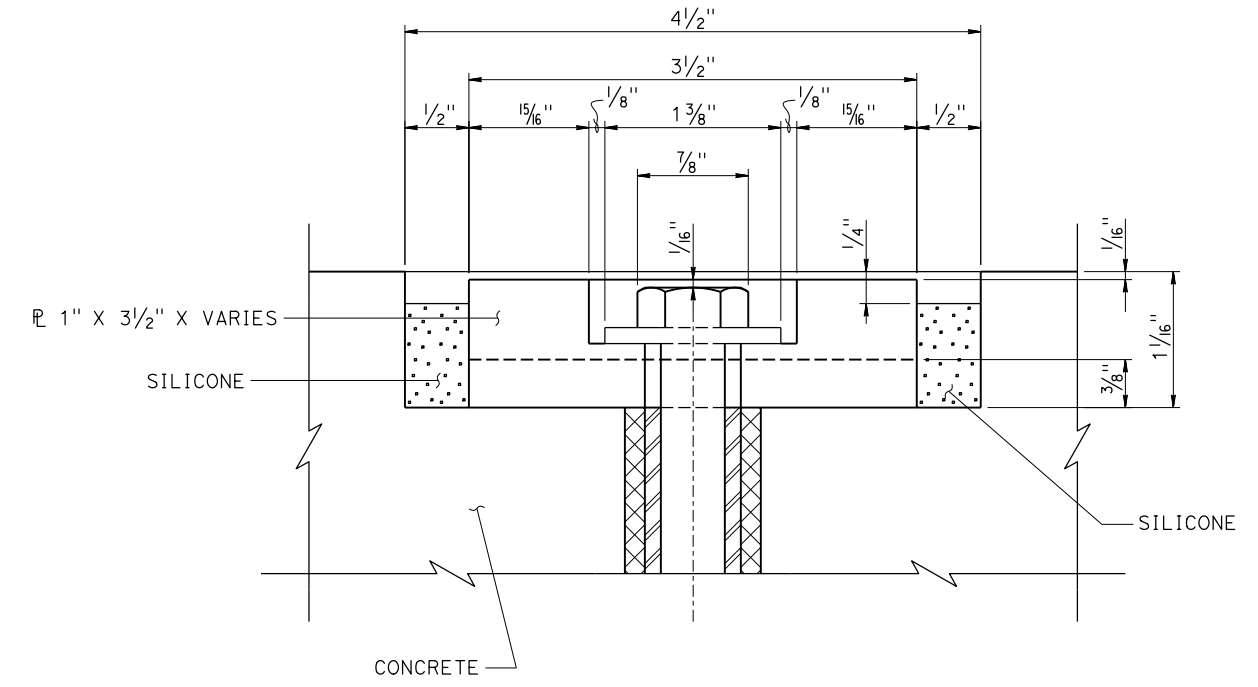


SECTION C-C
16" = 1'-0"

- LEGEND:
- SILICONE
 - BONDING MATERIAL
 - THREADED INSERT



SECTION D-D
16" = 1'-0"



SECTION E-E
16" = 1'-0"

BRIDGE STANDARD DETAILS		
x68-130-2 FILE NO.	October 2019 APPROVAL DATE	The components of the Bridge Standard Details have been prepared under the responsible charge of the Technical Owner, a registered civil engineer in the State of California.

DATE PLOTTED => 21-OCT-2019 FILE => x68-130-2.dgn	TIME PLOTTED => 08:25 USERNAME => s114937	ORIGINAL SCALE IN INCHES FOR REDUCED PLANS
------------------------------------------------------	----------------------------------------------	--------------------------------------------------

STATE OF CALIFORNIA DEPARTMENT OF TRANSPORTATION	DIVISION OF ENGINEERING SERVICES
------------------------------------------------------------	-----------------------------------------

BRIDGE No. X
POST MILE X

X	SNOWPLOW DEFLECTOR DETAILS No. 2	X
----------	-----------------------------------------	----------