

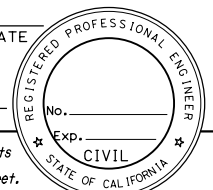
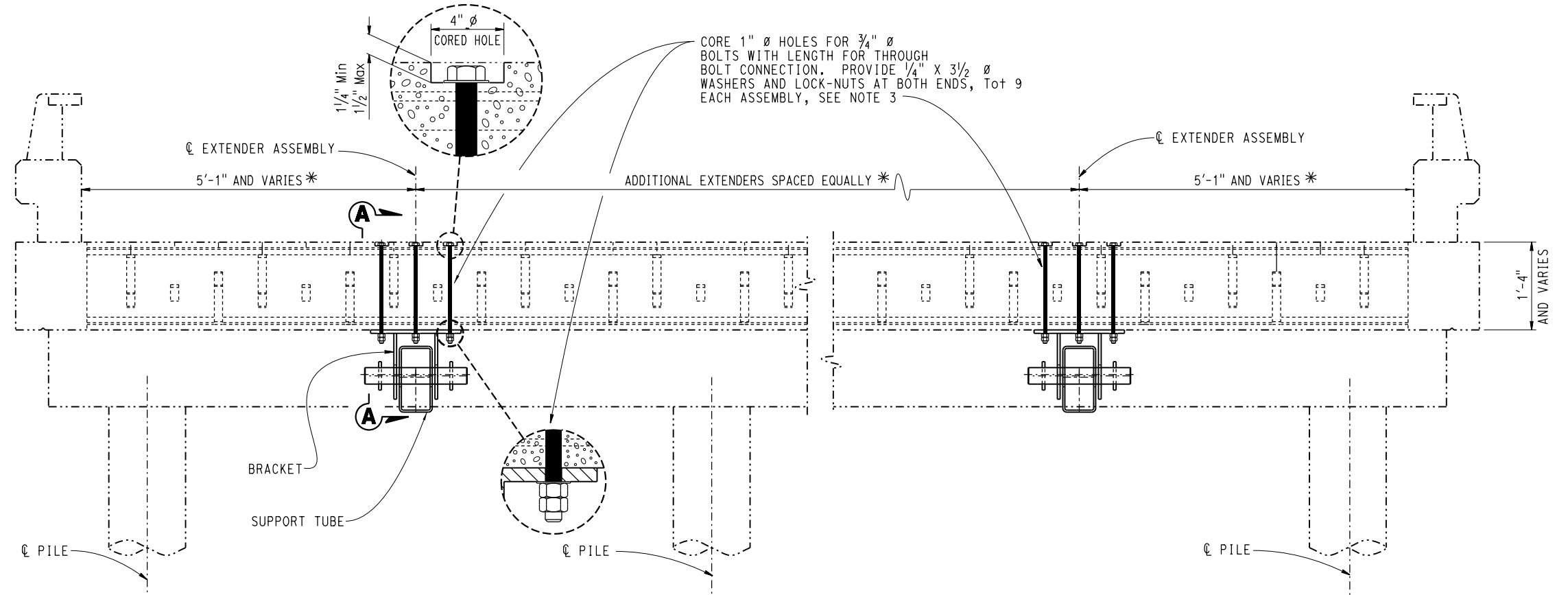
DIST	COUNTY	ROUTE	POST MILES TOTAL PROJECT	SHEET No.	TOTAL SHEETS

REGISTERED CIVIL ENGINEER DATE _____

PLANS APPROVAL DATE _____

The State of California or its officers or agents shall not be responsible for the accuracy or completeness of scanned copies of this plan sheet.

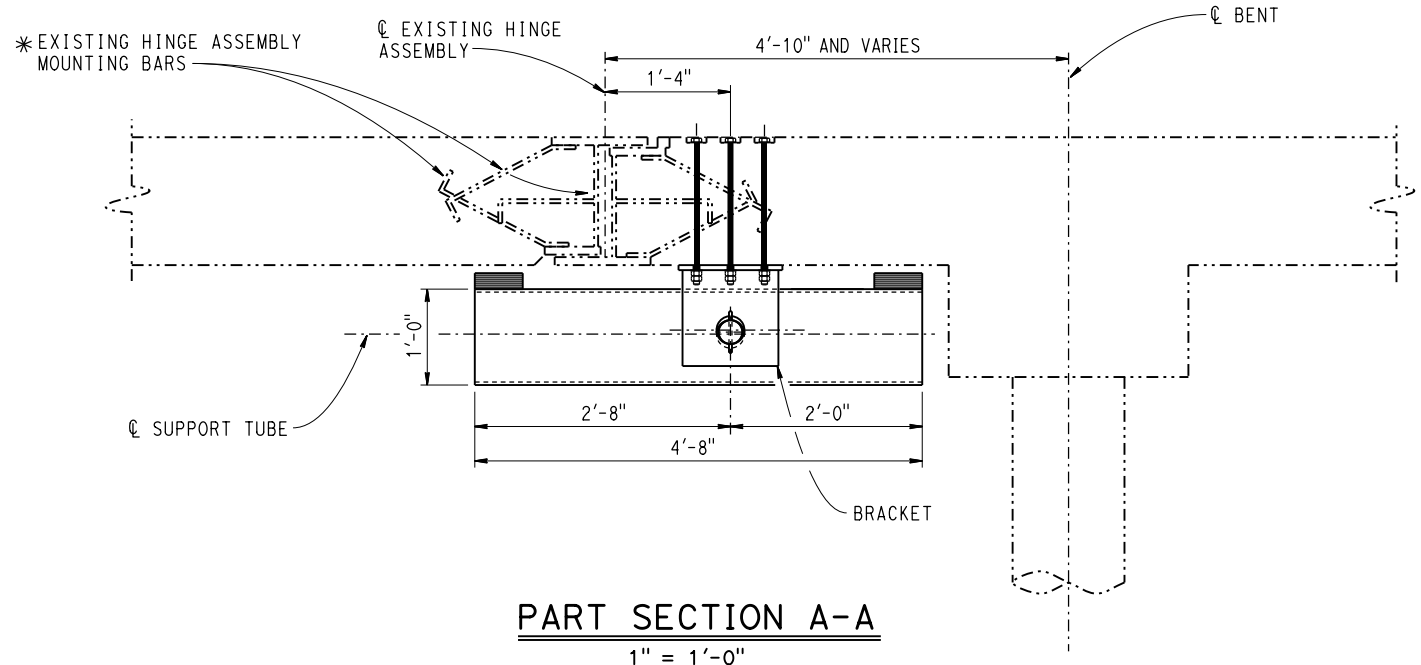
The Registered Civil Engineer for the project is responsible for the selection and proper application of the component design and any modifications shown.

TYPICAL SECTION AT HINGE
1" = 1'-0"

* ANCHOR BOLTS MUST CLEAR MOUNTING BARS ON EXISTING HINGE ASSEMBLY AS WELL AS EXISTING LONGITUDINAL REINFORCEMENT

- NOTES:
1. Extender capacity = 30 kips at center of cantilever bearing pad
 2. Minimum slab thickness = 16"
 3. Plug holes with epoxy mortar after placing bolts
 4. Install 2 extender units per hinge minimum
 5. Galvanize all steel and bolts



PART SECTION A-A
1" = 1'-0"

NOTE:
THE CONTRACTOR SHALL VERIFY ALL CONTROLLING FIELD DIMENSIONS BEFORE ORDERING OR FABRICATING ANY MATERIAL.

BRIDGE STANDARD DETAILS			STATE OF CALIFORNIA DEPARTMENT OF TRANSPORTATION DIVISION OF ENGINEERING SERVICES			BRIDGE NO.		SLAB BRIDGE SEAT EXTENDER-DETAILS No. 1						
xs7-100-1 FILE NO.	July 2014 APPROVAL DATE	<i>The components of the Bridge Standard Details have been prepared under the responsible charge of the Technical Owner, a registered civil engineer in the State of California</i>				POST MILE								
Refer to: http://www.dot.ca.gov/hq/esc/techpubs/manual/bridgemanuals/bridge-standard-detail-sheets/index.html			FILE => xs7-100-1.dgn	ORIGINAL SCALE IN INCHES FOR REDUCED PLANS	0	1	2	3	UNIT: PROJECT NUMBER & PHASE:	CONTRACT NO.:	DISREGARD PRINTS BEARING EARLIER REVISION DATES	REVISION DATES	SHEET	OF
USERNAME => s136236			TIME PLOTTED => 07:28	DATE PLOTTED => 12-JUL-2016						4-14-14 7-8-16				