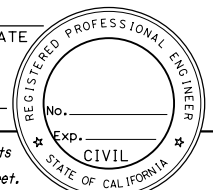
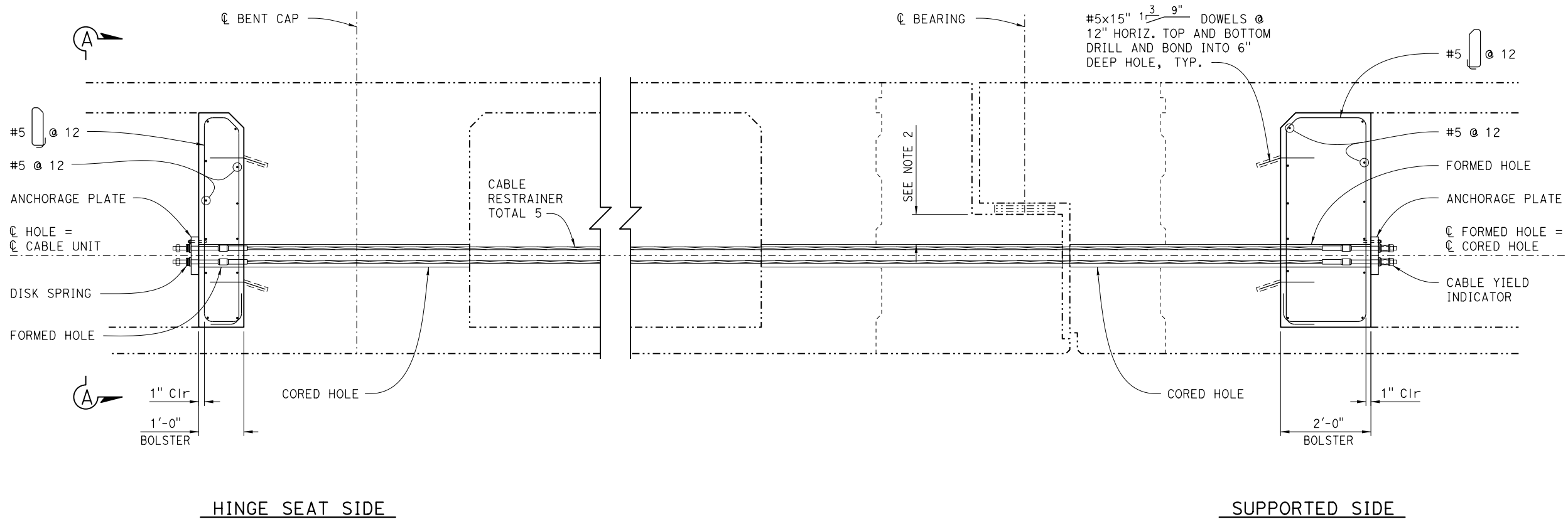
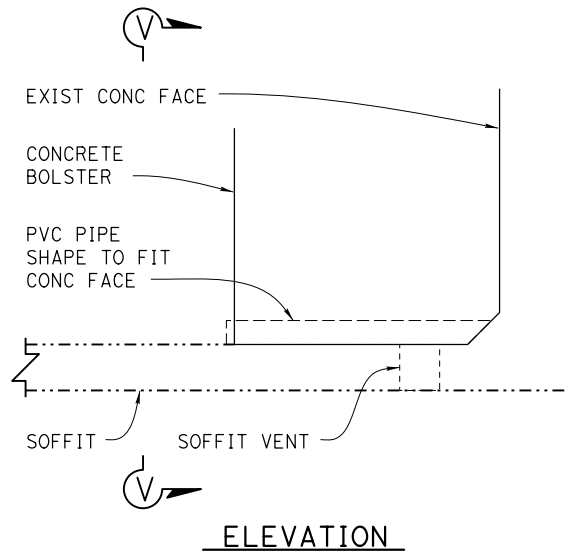
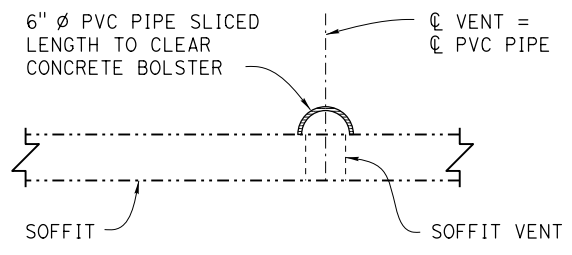


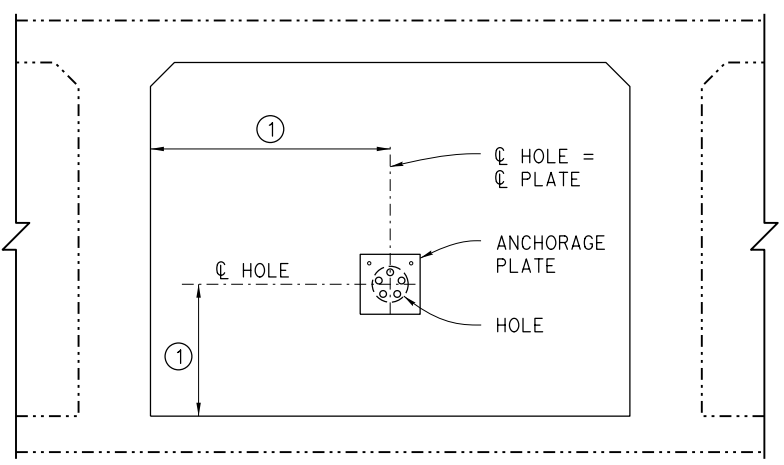
DIST	COUNTY	ROUTE	POST MILES TOTAL PROJECT	SHEET No.	TOTAL SHEETS
REGISTERED CIVIL ENGINEER			DATE		
PLANS APPROVAL DATE					
<small>The State of California or its officers or agents shall not be responsible for the accuracy or completeness of scanned copies of this plan sheet.</small>					
<small>The Registered Civil Engineer for the project is responsible for the selection and proper application of the component design and any modifications shown.</small>					



RESTRAINER RETROFIT ON AN EXISTING STRUCTURE
 $\frac{3}{4}" = 1'-0"$

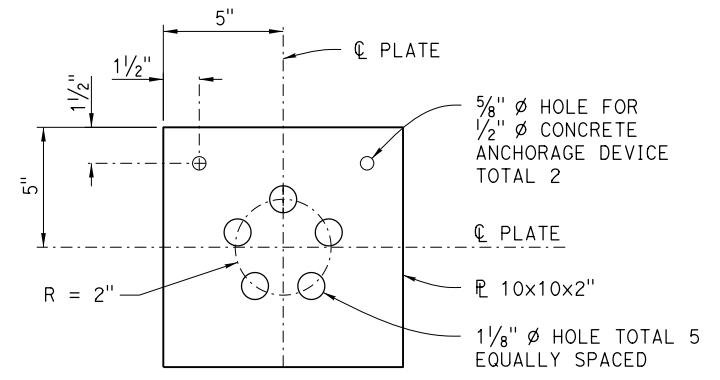


Existing soffit vents must remain open. Where concrete bolster interferes, place a PVC pipe extension or similar device, size to be approved by the Engineer.



VIEW A-A
 $\frac{3}{4}" = 1'-0"$

① For Location of hole, see Structure Plans.



ANCHORAGE PLATE
 $3" = 1'-0"$

Notes

- The Formed and Cored Holes must be 6" ϕ and must be aligned to form a straight line the entire length of the restrainers and be parallel to the ϕ girder. The Top of Hole must be 2" below the seat's top main reinf. During construction, hole ends must be capped to prevent debris intrusion.
- The Bearing surface must be perpendicular to girders.
- For Cable Restrainer and Hardware details see: XS7-090, "Cable Restrainer Hardware Details" sheet.
- Reinforcement not shown.

----- Indicates existing structure.

VENT EXTENSION
 $1" = 1'-0"$

BRIDGE STANDARD DETAILS		NOTES TO DESIGNER Remove these notes at PS&E Place Restrainers between bearings.	STATE OF CALIFORNIA DEPARTMENT OF TRANSPORTATION	DIVISION OF ENGINEERING SERVICES	BRIDGE NO.	CABLE RESTRAINER TYPE 1 (RETROFIT)
xs7-041 <small>FILE NO.</small>	July 2014 <small>APPROVAL DATE</small>		<small>The components of the Bridge Standard Details have been prepared under the responsible charge of the Technical Owner, a registered civil engineer in the State of California.</small>	PROJECT NUMBER & PHASE:	POST MILE	
<small>Refer to: http://www.dot.ca.gov/hq/esc/techpubs/manual/bridgemanuals/bridge-standard-detail-sheets/index.html</small>		<small>FILE => xs7-041.dgn</small> <small>USERNAME => s136236</small>	<small>ORIGINAL SCALE IN INCHES FOR REDUCED PLANS</small> 0 1 2 3	<small>UNIT:</small> <small>PROJECT NUMBER & PHASE:</small>	<small>DISREGARD PRINTS BEARING EARLIER REVISION DATES</small> 4-18-14 7-8-16	<small>SHEET</small> OF