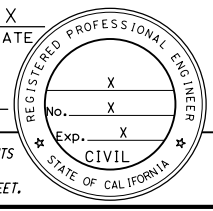
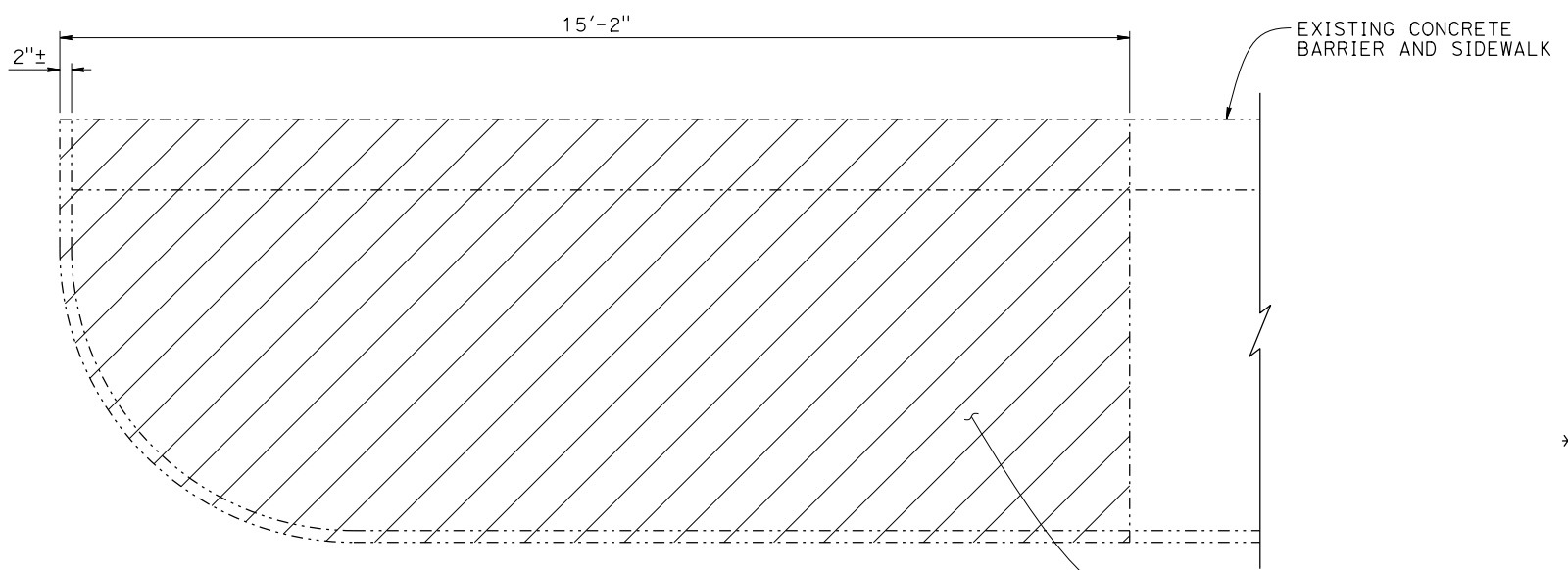


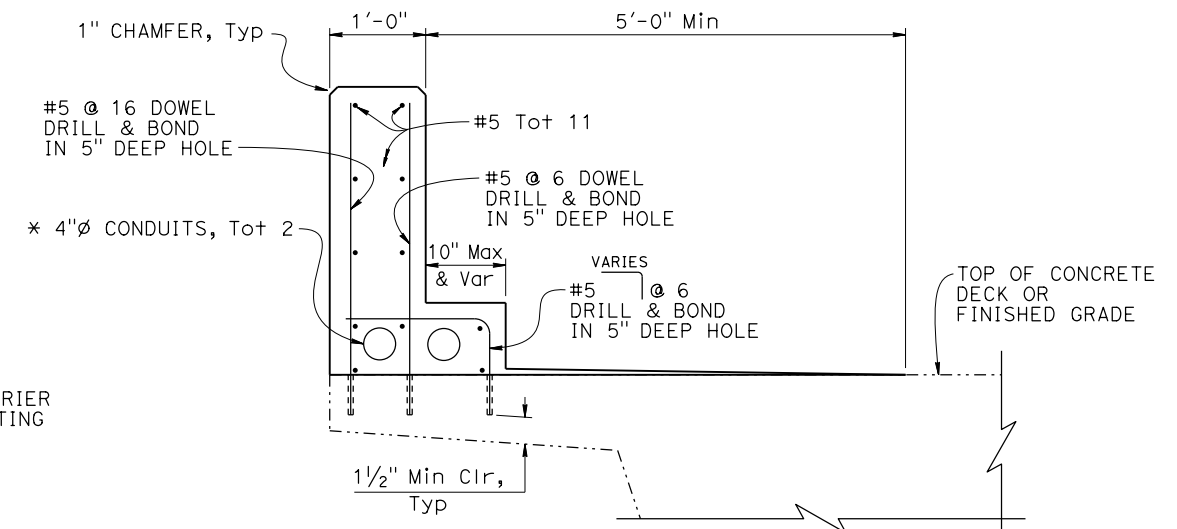
Dist	COUNTY	ROUTE	POST MILES TOTAL PROJECT	SHEET No.	TOTAL SHEETS
REGISTERED CIVIL ENGINEER			X	DATE	
PLANS APPROVAL DATE					
THE STATE OF CALIFORNIA OR ITS OFFICERS OR AGENTS SHALL NOT BE RESPONSIBLE FOR THE ACCURACY OR COMPLETENESS OF SCANNED COPIES OF THIS PLAN SHEET.					
THE REGISTERED CIVIL ENGINEER FOR THE PROJECT IS RESPONSIBLE FOR THE SELECTION AND PROPER APPLICATION OF THE COMPONENT DESIGN AND ANY MODIFICATIONS SHOWN.					



LEGEND:  
 - - - - - Existing Structure  
 ▨ Concrete removal

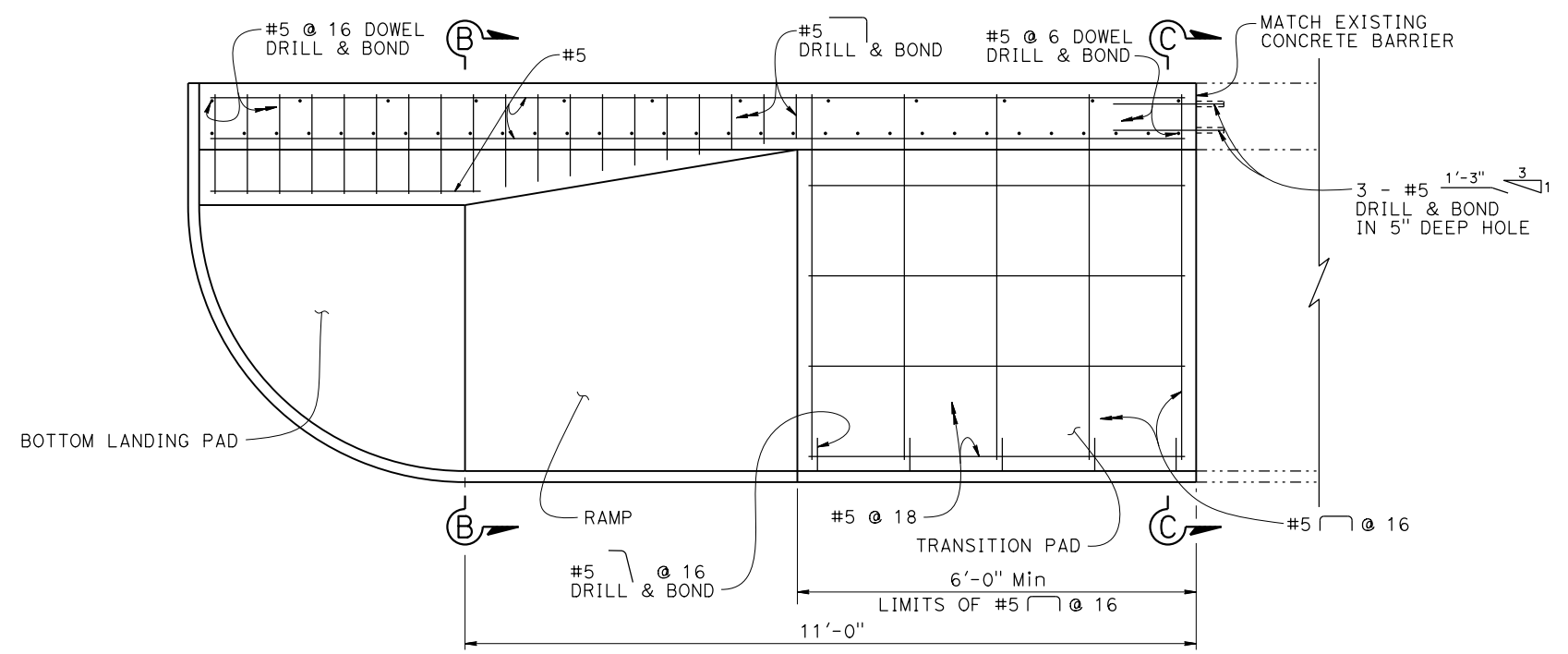


**DEMOLITION PLAN**  
 $\frac{3}{4}'' = 1'-0''$

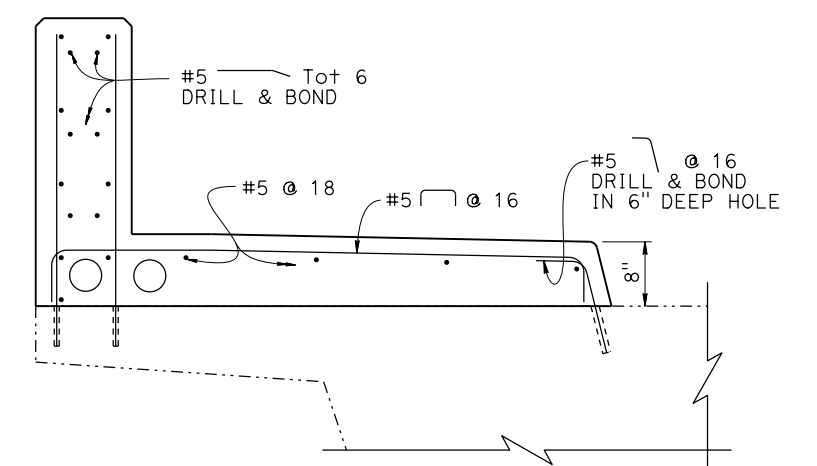


\* Existing conduits (if any) to be re-connected to the proposed conduits.

**SECTION B-B**  
 $1'' = 1'-0''$



**PLAN**  
 $\frac{3}{4}'' = 1'-0''$



NOTE: For details not shown, see "SECTION B-B."

**SECTION C-C**  
 $1'' = 1'-0''$

BRIDGE STANDARD DETAILS			STATE OF CALIFORNIA			DIVISION OF ENGINEERING SERVICES			CURB RAMP CASE 1		
xs19-010-2	September 2023	The components of the Bridge Standard Details have been prepared under the responsible charge of the Technical Owner, a registered civil engineer in the State of California.	DEPARTMENT OF TRANSPORTATION			ENGINEERING SERVICES			DETAILS No. 2		
FILE NO.	APPROVAL DATE										
Refer to: <a href="http://www.dot.ca.gov/hq/esc/techpubs/manual/bridgemanuals/bridge-standard-detail-sheets/index.html">http://www.dot.ca.gov/hq/esc/techpubs/manual/bridgemanuals/bridge-standard-detail-sheets/index.html</a>			DATE PLOTTED => 21-SEP-2023			TIME PLOTTED => 14:58			ORIGINAL SCALE IN INCHES FOR REDUCED PLANS		
			FILE => 201407-xs19-010-2.dgn			USERNAME => s136247			UNIT: XXXX		
									COUNTY/ROUTE/ZONE: XXX/XXX/X		
									DISREGARD PRINTS BEARING EARLIER REVISION DATES		
									REVISION DATES		
									SHEET OF		
									X X		