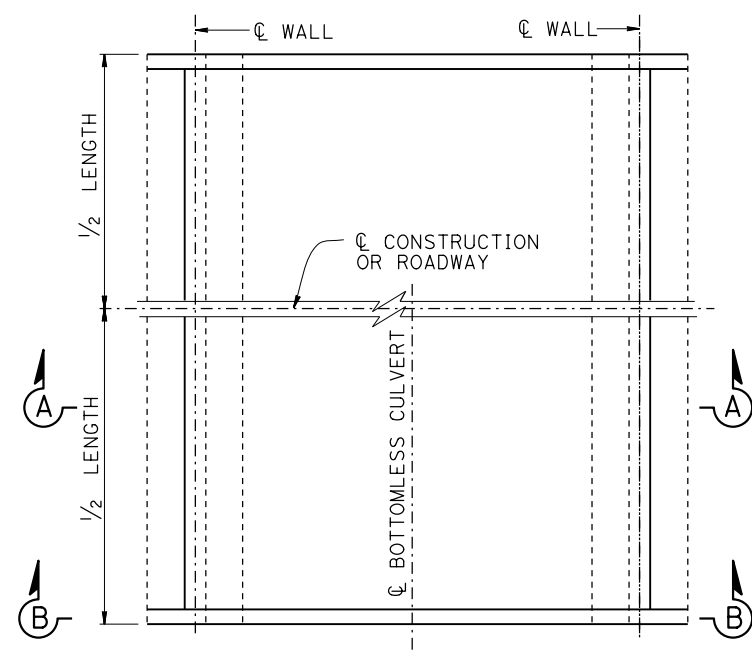
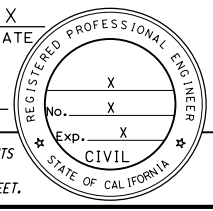
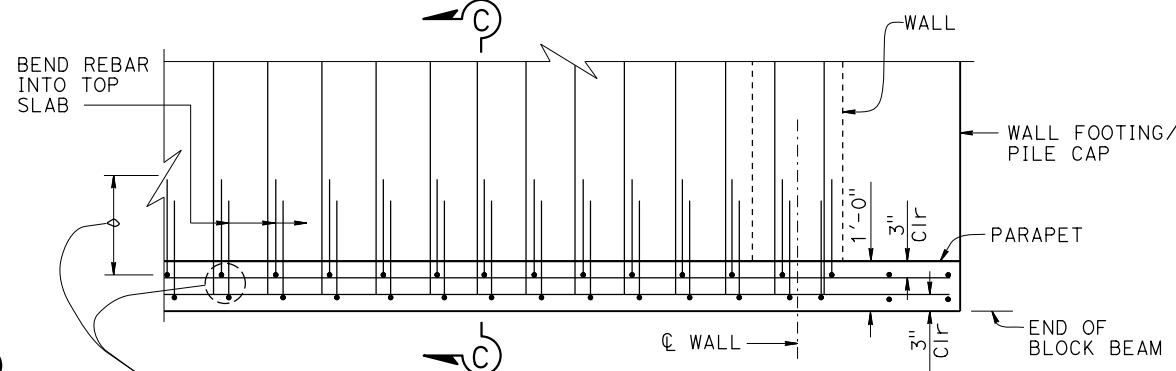


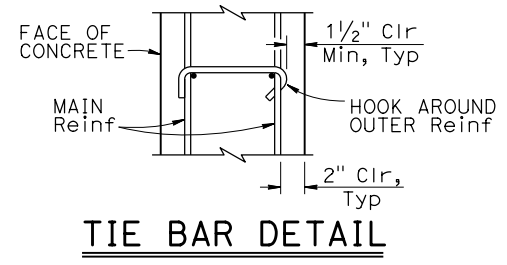
Dist	COUNTY	ROUTE	POST MILES TOTAL PROJECT	SHEET No.	TOTAL SHEETS
REGISTERED CIVIL ENGINEER			X	DATE	
PLANS APPROVAL DATE					
THE STATE OF CALIFORNIA OR ITS OFFICERS OR AGENTS SHALL NOT BE RESPONSIBLE FOR THE ACCURACY OR COMPLETENESS OF SCANNED COPIES OF THIS PLAN SHEET.					
THE REGISTERED CIVIL ENGINEER FOR THE PROJECT IS RESPONSIBLE FOR THE SELECTION AND PROPER APPLICATION OF THE COMPONENT DESIGN AND ANY MODIFICATIONS SHOWN.					



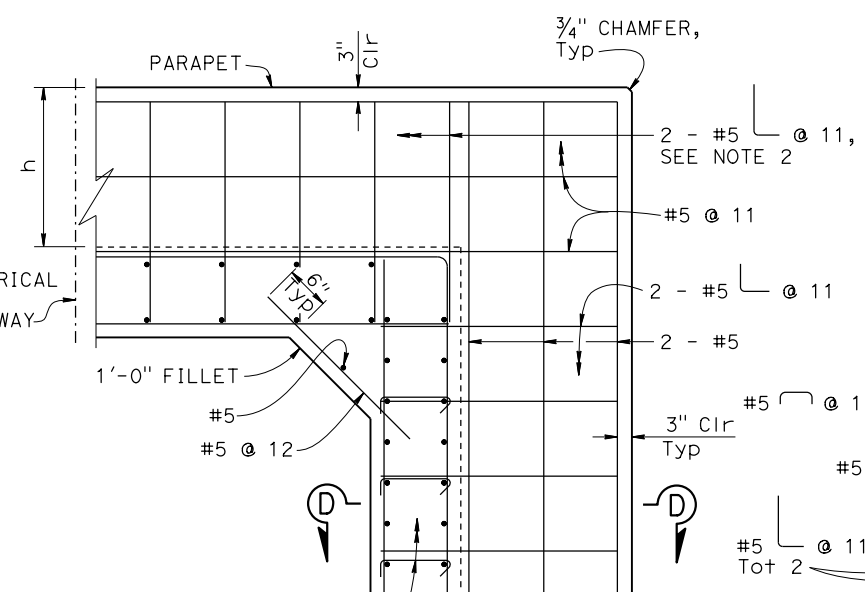
PLAN (RIGID FRAME)



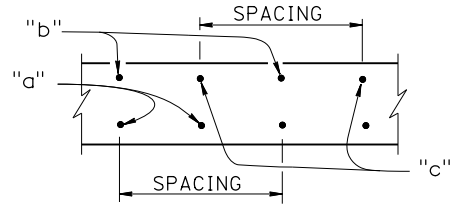
PART PLAN



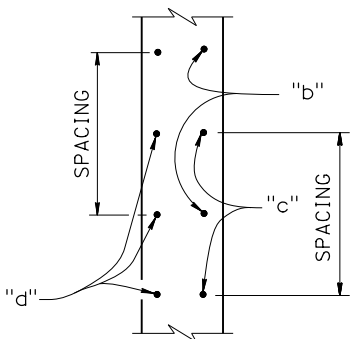
TIE BAR DETAIL



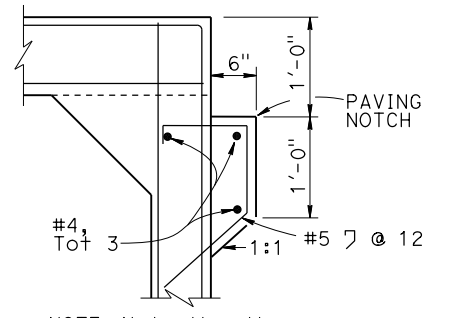
ELEVATION CONCRETE PARAPET



SIDE VIEW ROOF SECTION

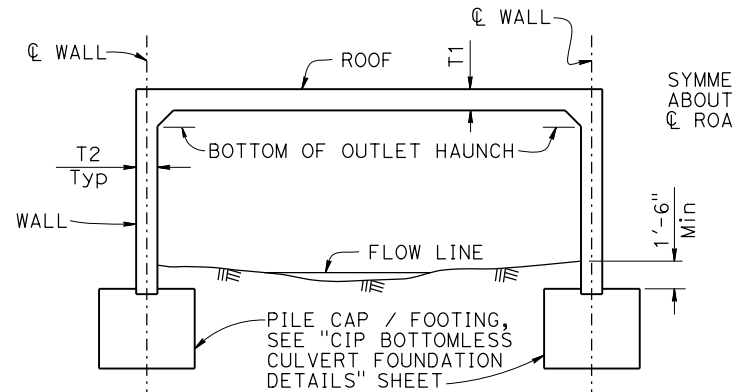


TOP VIEW WALL SECTION

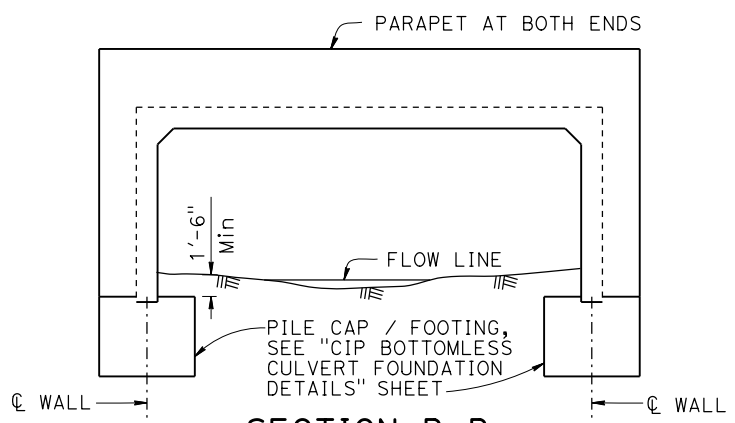


ALTERNATIVE PAVING NOTCH

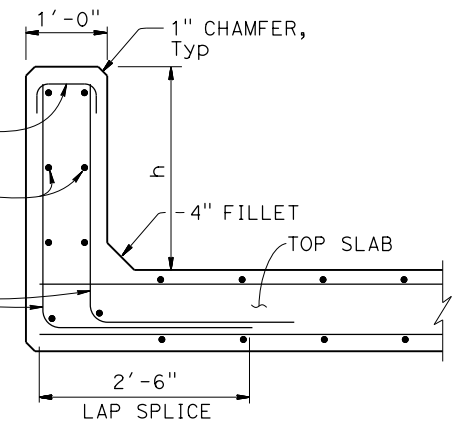
NOTE: Not all wall reinforcement shown.



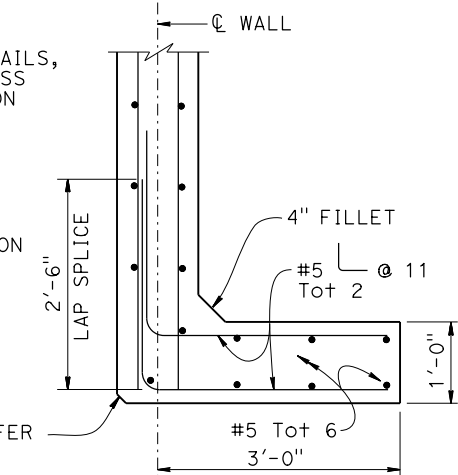
SECTION A-A



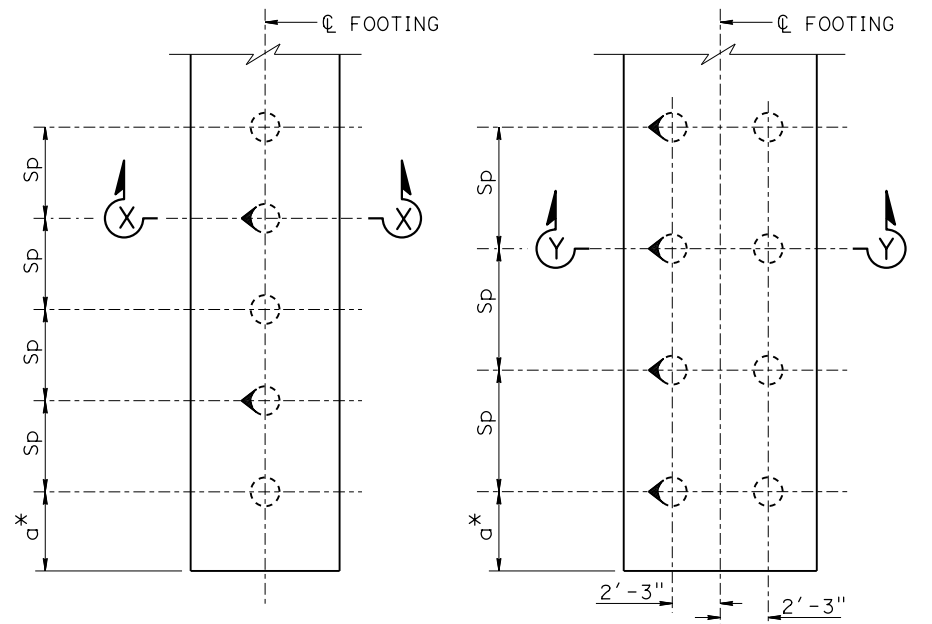
SECTION B-B



SECTION C-C



SECTION D-D



PILE LAYOUT

*a = 1.5' Min; Max = SP/2 or 4'-0" whichever is less

FOUNDATION DESIGN NOTES:

- For footings on rock, the bottom of footing shall follow the rock surface along the wall line, holes 1/2" in diameter and 2'-6" depth shall be drilled at 1'-0" spacing along the centerline of footing into competent rock. Drill and bond No. 8 dowels in accordance with Standard Specifications Section 51.
- For footings on soil, see "CIP BOTTOMLESS CULVERT FOUNDATION DETAILS" sheet.

- NOTES:
- For parapet height "h" and other details not shown, see "CIP BOTTOMLESS CULVERT GENERAL CONFIGURATIONS" sheet.
 - Skewed parapets require additional reinforcement, see "CIP BOTTOMLESS CULVERT GENERAL CONFIGURATIONS" sheet.
 - For "SECTION X-X", "SECTION Y-Y", see "CIP BOTTOMLESS CULVERT FOUNDATION DETAILS" sheet.
 - Stagger layout of piles in opposing footing to avoid conflict between battered piles.
 - For "a", "b", "c", "T1" and "T2", see "CIP BOTTOMLESS CULVERT PILE FOUNDATION/FOOTINGS ON ROCK" and "CIP BOTTOMLESS CULVERT FOOTINGS ON SOIL" sheets.

NO SCALE

BRIDGE STANDARD DETAILS		STATE OF CALIFORNIA DEPARTMENT OF TRANSPORTATION		DIVISION OF ENGINEERING SERVICES		BRIDGE No. XX-XXXX	CIP BOTTOMLESS CULVERT WALL, SLAB AND PILE DETAILS							
xs17-050-2 FILE NO.	September 2023 APPROVAL DATE	ORIGINAL SCALE IN INCHES FOR REDUCED PLANS 0 1 2 3		UNIT: XXXX PROJECT NUMBER & PHASE: XXXXXXXXXX1		POST MILE X.X	COUNTY/ROUTE/ZONE: XXX/XXX/X CONTRACT No.: XX-XXXXX4							
Refer to: http://www.dot.ca.gov/hq/esc/techpubs/manual/bridgemanuals/bridge-standard-detail-sheets/index.html							DATE PLOTTED => 1-SEP-2023 FILE => 201605-xs17-050-2.dgn		TIME PLOTTED => 15:32 USERNAME => s136481		DISREGARD PRINTS BEARING EARLIER REVISION DATES		SHEET X	OF X