

Dist	COUNTY	ROUTE	POST MILES TOTAL PROJECT	SHEET No.	TOTAL SHEETS
				X	

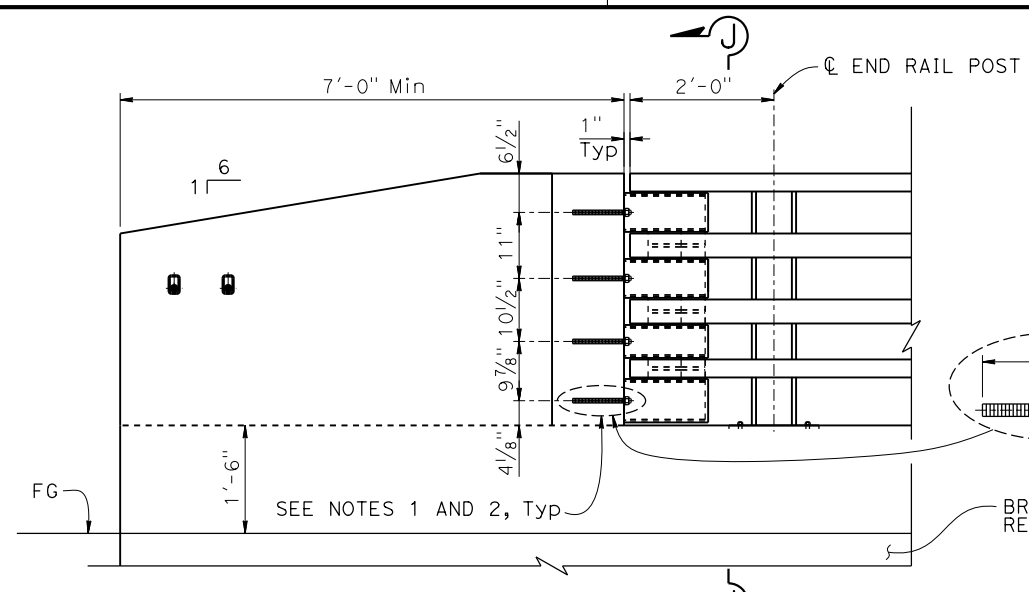
  

REGISTERED CIVIL ENGINEER	DATE	X
PLANS APPROVAL DATE		

THE STATE OF CALIFORNIA OR ITS OFFICERS OR AGENTS SHALL NOT BE RESPONSIBLE FOR THE ACCURACY OR COMPLETENESS OF SCANNED COPIES OF THIS PLAN SHEET.

THE REGISTERED CIVIL ENGINEER FOR THE PROJECT IS RESPONSIBLE FOR THE SELECTION AND PROPER APPLICATION OF THE COMPONENT DESIGN AND ANY MODIFICATIONS SHOWN.



**PARAPET SHOE AT DEPARTURE END BLOCK**

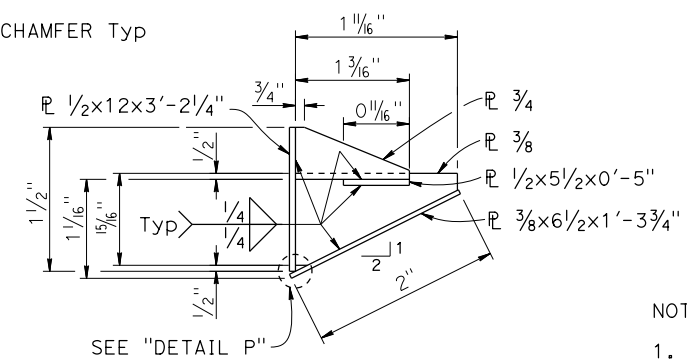
NOTE: Parapet shoe connection to approach end block is similar.

OUTER EDGE OF PARAPET SHOE TO ALIGN WITH INSIDE EDGE OF 3/4" CHAMFER

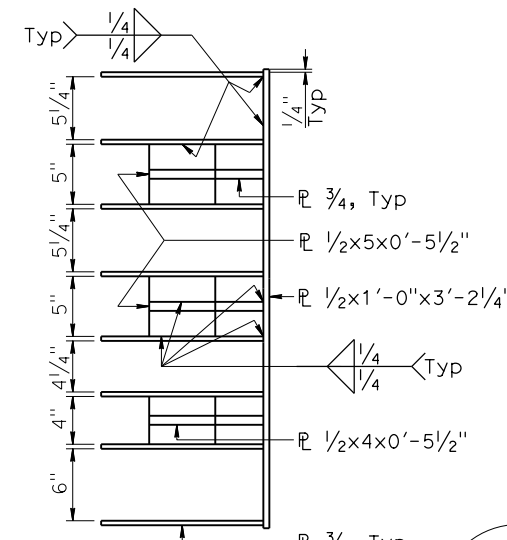
TRAFFIC SIDE  
BOTTOM OF PARAPET SHOE  
STRUCTURE APPROACH

**SECTION J-J**

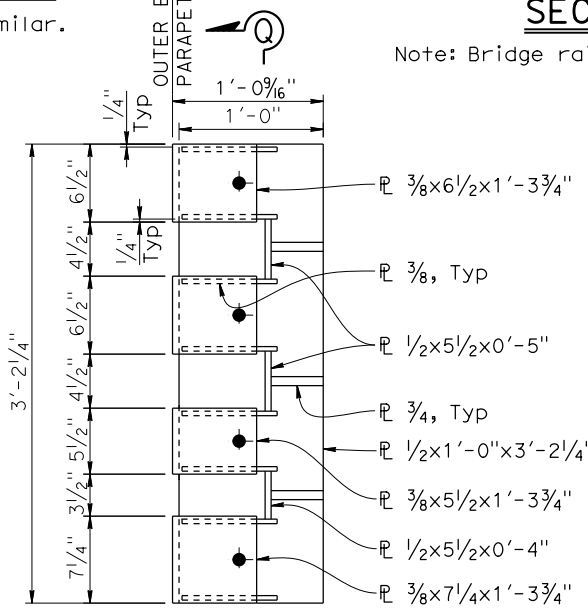
Note: Bridge railing not shown for clarity.



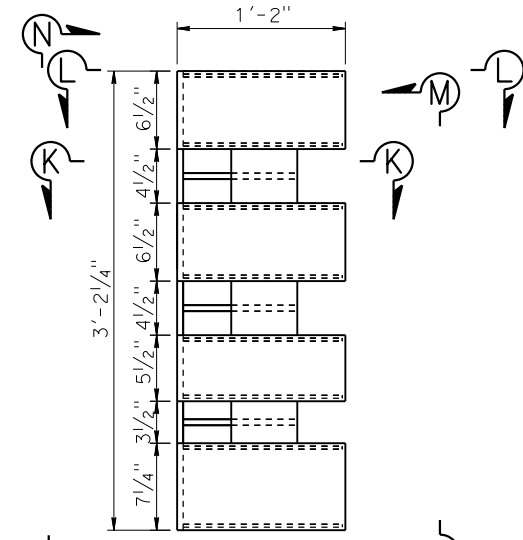
**SECTION K-K**



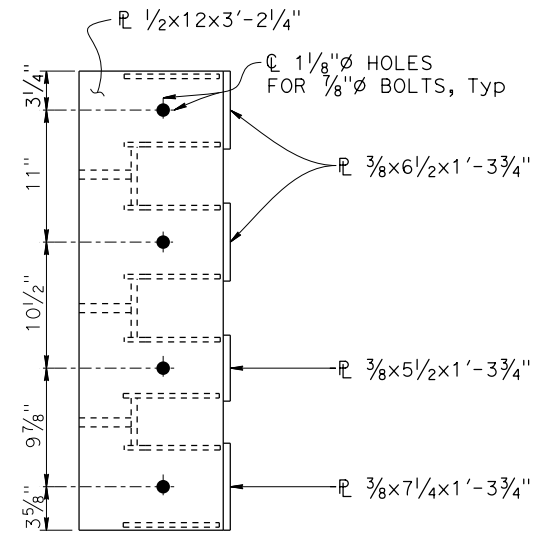
**SECTION Q-Q**



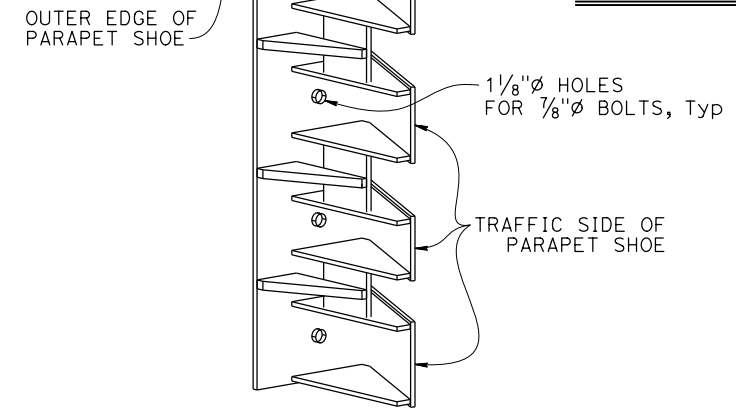
**VIEW M-M**



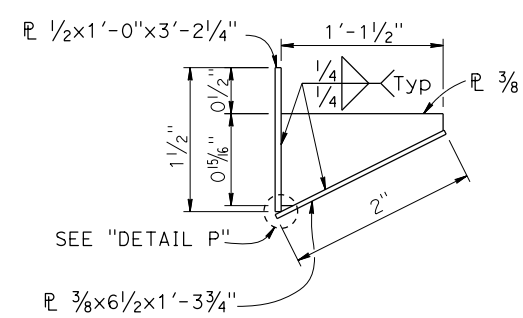
**PARAPET SHOE ELEVATION**



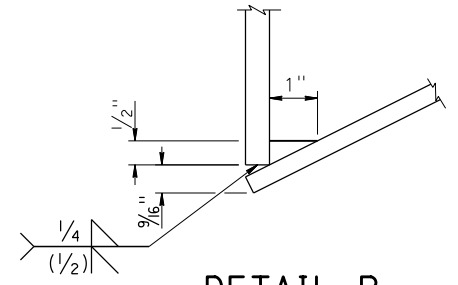
**VIEW N-N**



**ISOMETRIC VIEWS**



**SECTION L-L**



**DETAIL P**

NO SCALE

BRIDGE STANDARD DETAILS			STATE OF CALIFORNIA		DIVISION OF ENGINEERING SERVICES		CALIFORNIA ST-70SM SIDE MOUNTED BRIDGE RAIL	
xs16-115-5	April 2024	The components of the Bridge Standard Details have been prepared under the responsible charge of the Technical Owner, a registered civil engineer in the State of California.	DEPARTMENT OF TRANSPORTATION	BRIDGE No. XX-XXXX	POST MILE X.X	CONTRACT No.: XX-XXXXX4		
Refer to: <a href="http://www.dot.ca.gov/hq/esc/techpubs/manual/bridgemanuals/bridge-standard-detail-sheets/index.html">http://www.dot.ca.gov/hq/esc/techpubs/manual/bridgemanuals/bridge-standard-detail-sheets/index.html</a>	DATE PLOTTED => 22-APR-2024	TIME PLOTTED => 13:56	ORIGINAL SCALE IN INCHES FOR REDUCED PLANS 0 1 2 3	UNIT: XXXX	COUNTY/ROUTE/ZONE: XXX/XXX/X	DISREGARD PRINTS BEARING EARLIER REVISION DATES	REVISION DATES	SHEET X OF X