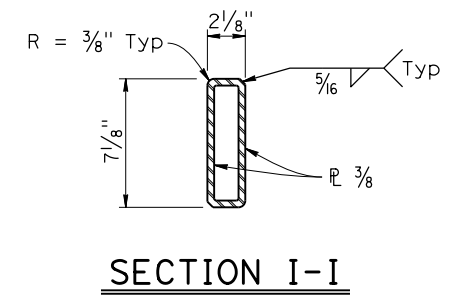
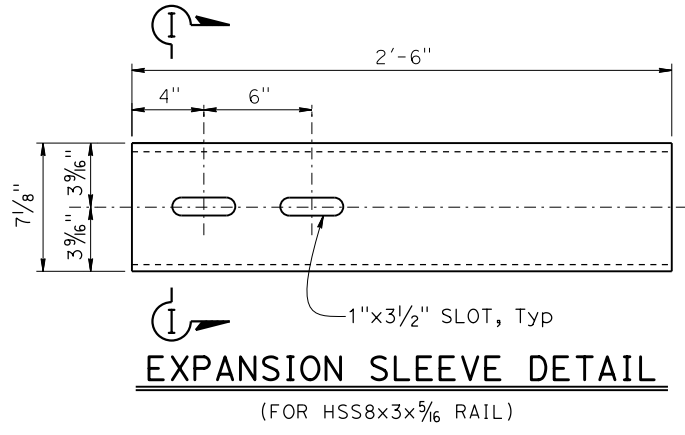
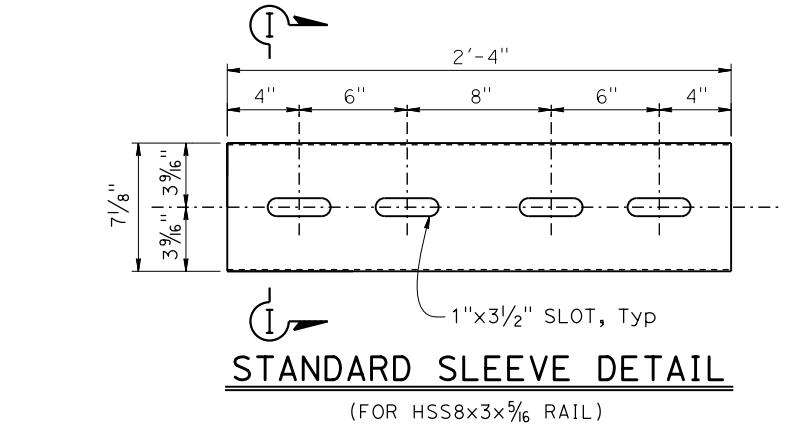
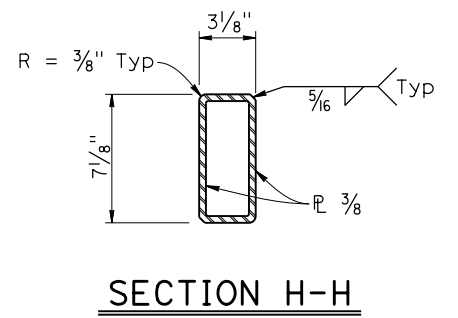
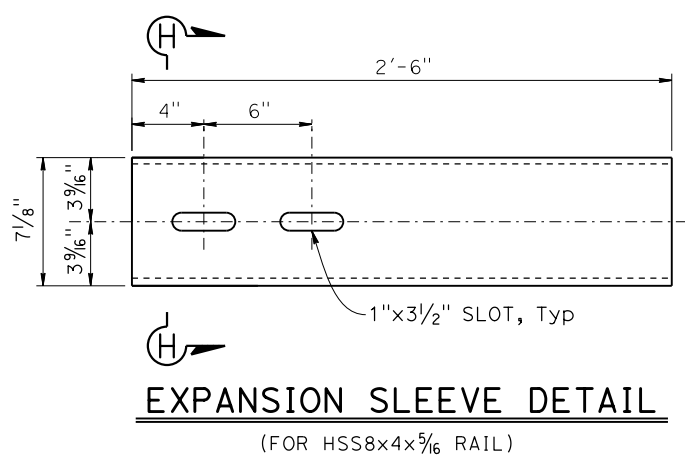
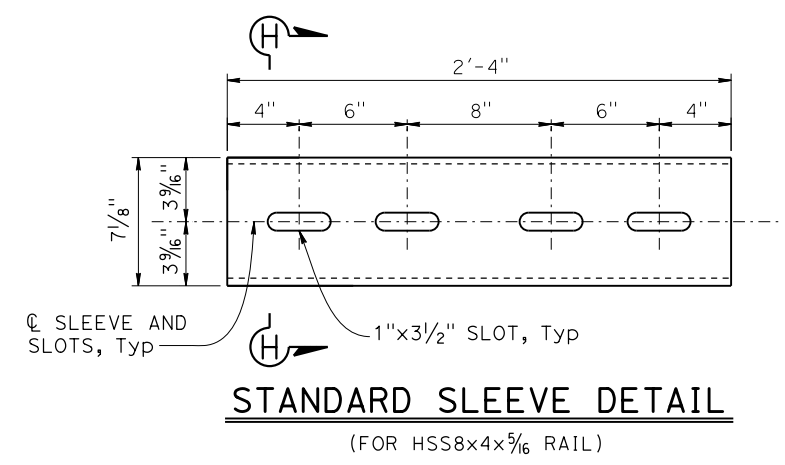
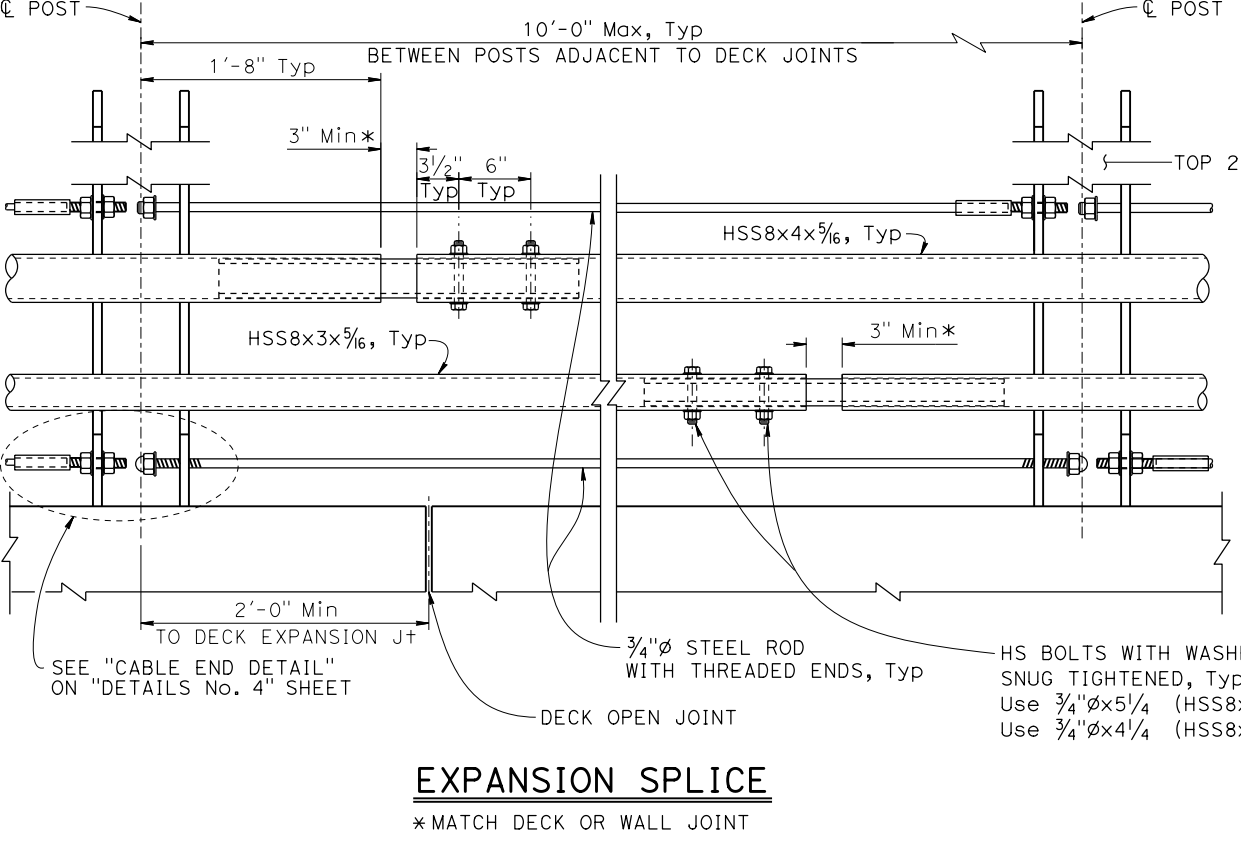
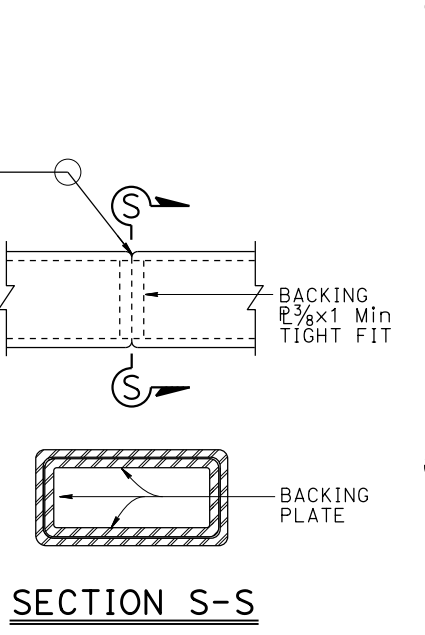
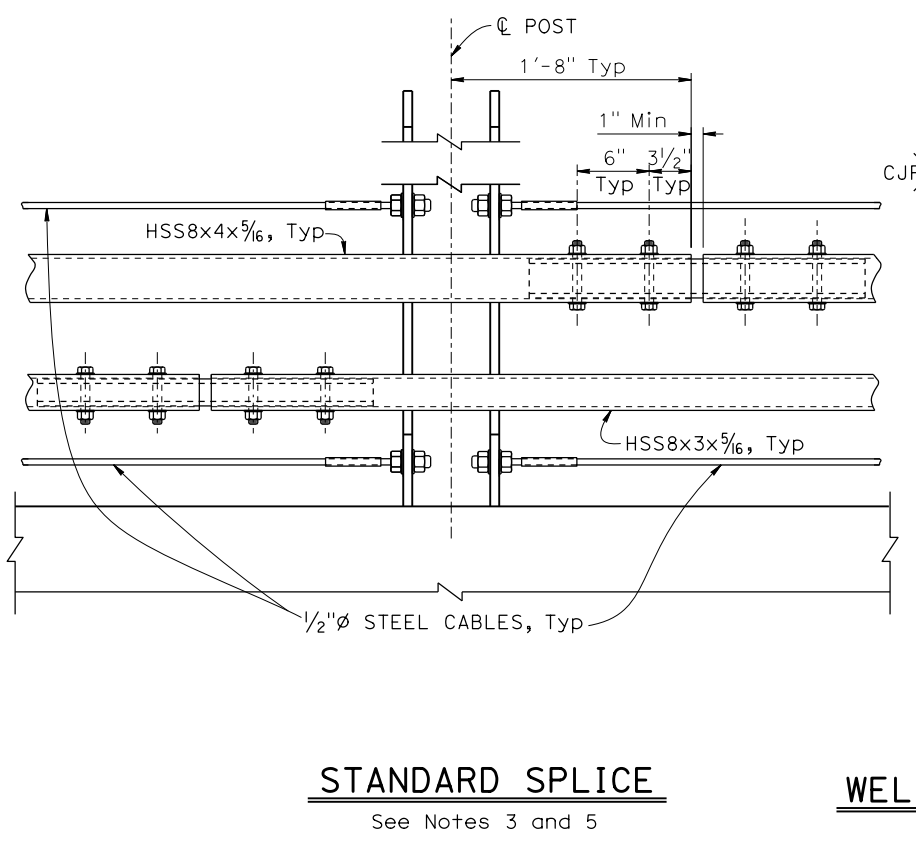


Dist	COUNTY	ROUTE	POST MILES TOTAL PROJECT	SHEET No.	TOTAL SHEETS
				X	
REGISTERED CIVIL ENGINEER			DATE	X	
PLANS APPROVAL DATE				X	
THE STATE OF CALIFORNIA OR ITS OFFICERS OR AGENTS SHALL NOT BE RESPONSIBLE FOR THE ACCURACY OR COMPLETENESS OF SCANNED COPIES OF THIS PLAN SHEET.					
THE REGISTERED CIVIL ENGINEER FOR THE PROJECT IS RESPONSIBLE FOR THE SELECTION AND PROPER APPLICATION OF THE COMPONENT DESIGN AND ANY MODIFICATIONS SHOWN.					



- NOTES:
- All steel members are ASTM A1085 unless otherwise noted.
  - All steel members and connectors shall be galvanized unless otherwise noted.
  - Each rail length shall be continuous over a minimum of two posts.
  - The contractor shall check that the tubular sleeve splices conform to the dimensions indicated to assure proper clearance.
  - Except for expansion splices, not more than one splice shall be permitted per same side of post.
  - HS Bolts with nut and washers to be snug tightened, unless noted otherwise. Thread locking system must be applied at all bolted connections.



TOP 2 RAILS ARE NOT SHOWN FOR CLARITY

HS BOLTS WITH WASHERS, SNUG TIGHTENED, Typ  
 Use 3/4" x 5 1/4" (HSS8x4x5/16)  
 Use 3/4" x 4 1/4" (HSS8x3x5/16)

**STANDARD SPLICE**  
See Notes 3 and 5

**ALTERNATE TUBE WELDED STANDARD SPLICE**

**EXPANSION SPLICE**  
\* MATCH DECK OR WALL JOINT

NO SCALE