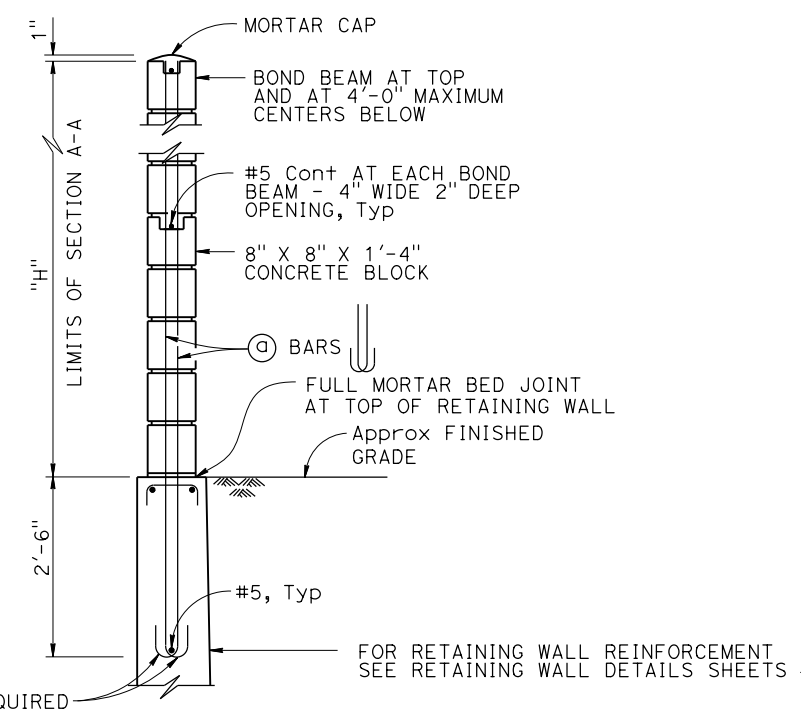
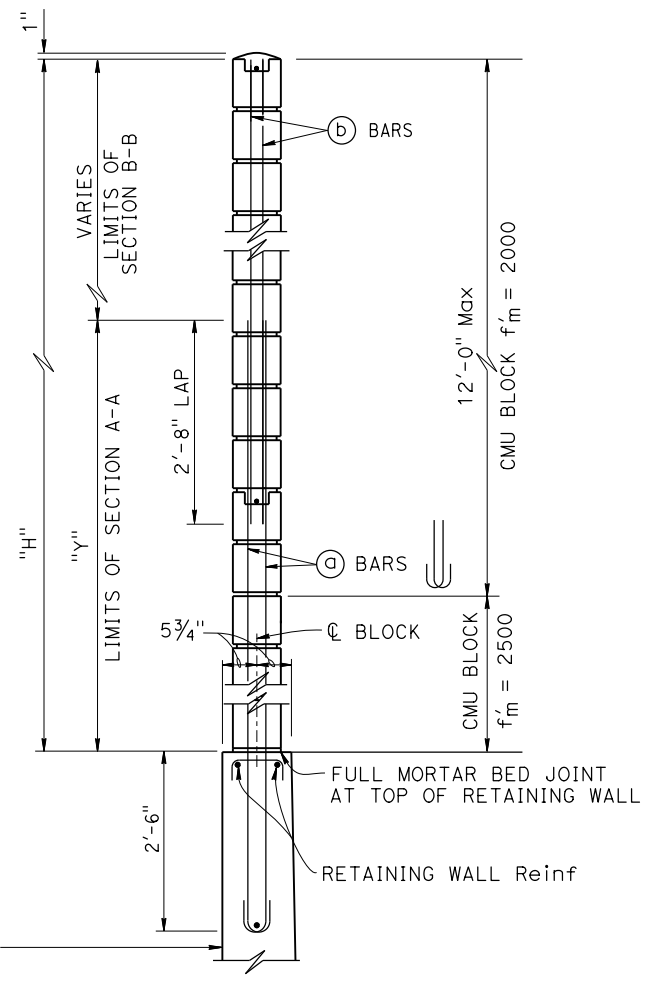


|   |        |       |                          |           |              |
|---|--------|-------|--------------------------|-----------|--------------|
| Dist  | COUNTY | ROUTE | POST MILES TOTAL PROJECT | SHEET No. | TOTAL SHEETS |
| DDDD  | CCCC   | RRRR  | PPPP                     | ????      | ####         |
| REGISTERED CIVIL ENGINEER   |        |       | X                        | DATE      |              |
| PLANS APPROVAL DATE   |        |       | MM/DD/YYYY               |           |              |
|   |        |       |                          |           |              |
| <small>THE STATE OF CALIFORNIA OR ITS OFFICERS OR AGENTS SHALL NOT BE RESPONSIBLE FOR THE ACCURACY OR COMPLETENESS OF SCANNED COPIES OF THIS PLAN SHEET.</small>          |        |       |                          |           |              |
| <small>THE REGISTERED CIVIL ENGINEER FOR THE PROJECT IS RESPONSIBLE FOR THE SELECTION AND PROPER APPLICATION OF THE COMPONENT DESIGN AND ANY MODIFICATIONS SHOWN.</small> |        |       |                          |           |              |



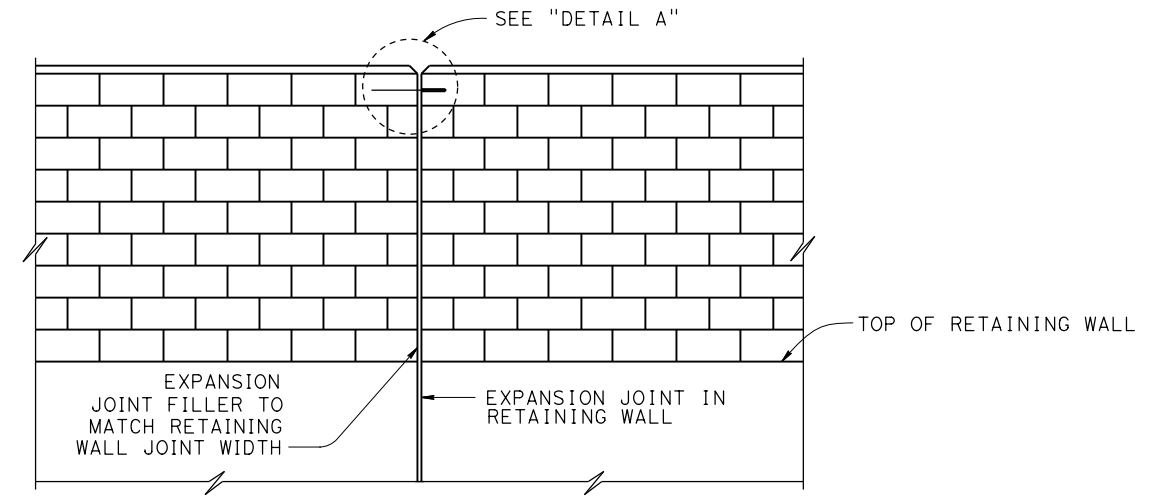
**H=6'-0" THRU H=10'-0"**

**TYPICAL SECTION**  
NO SCALE

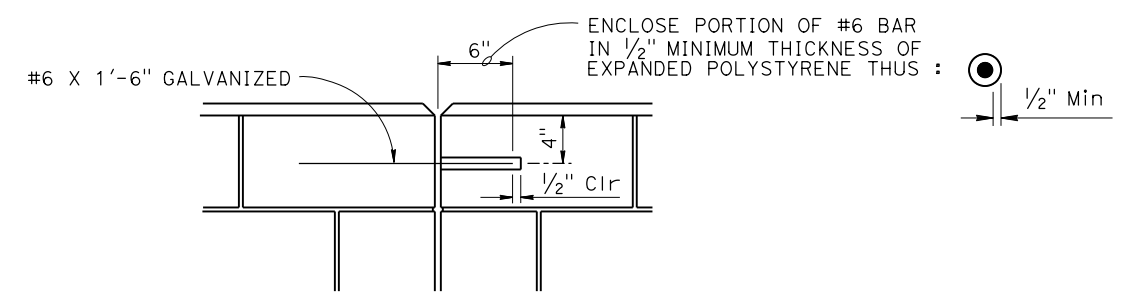


**H=12'-0" THRU H=16'-0"**

NOTE:  
For details not shown, see H=6'-0" thru H=10'-0"



**ALIGNMENT KEY DETAIL**  
NO SCALE



**DETAIL A**  
NO SCALE

|   |  |  |   |  |  |  |  |  |  |  |  |  |  |                               |  |                         |  |
|---|--|--|---|--|--|--|--|--|--|--|--|--|--|-------------------------------|--|-------------------------|--|
| BRIDGE STANDARD DETAILS   |  |  | STATE OF CALIFORNIA   |  |  | DIVISION OF ENGINEERING SERVICES                                   |  |  | BRIDGE No. X   |  |  | SOUND WALL MASONRY BLOCK ON RETAINING WALL                     |  |                               |  |                         |  |
| xs15-120-2  |  |  | APRIL 2020  |  |  | DEPARTMENT OF TRANSPORTATION                                       |  |  | POST MILE X  |  |  | DETAILS No. 2  |  |                               |  |                         |  |
| <small>The components of the Bridge Standard Details have been prepared under the responsible charge of the Technical Owner, a registered civil engineer in the State of California</small> |  |  | <small>DATE PLOTTED =&gt; 14-APR-2020<br/>FILE =&gt; xs15-120-2.dgn</small> |  |  | <small>TIME PLOTTED =&gt; 14:40<br/>USERNAME =&gt; s136236</small> |  |  | <small>UNIT: X<br/>PROJECT NUMBER &amp; PHASE: X</small> |  |  | <small>CONTRACT No.: X</small>                                 |  |                               |  |                         |  |
| <small>Refer to: http://www.dot.ca.gov/hq/esc/techpubs/manual/bridgemanuals/bridge-standard-detail-sheets/index.html</small>  |  |  |   |  |  |  |  |  |  |  |  | <small>DISREGARD PRINTS BEARING EARLIER REVISION DATES</small> |  | <small>REVISION DATES</small> |  | <small>SHEET OF</small> |  |
|   |  |  |   |  |  |  |  |  |  |  |  | <small>5-28-19 02/27/20 4-14-20</small>                        |  | <small>2 2</small>            |  |                         |  |