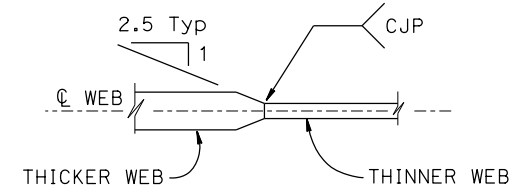
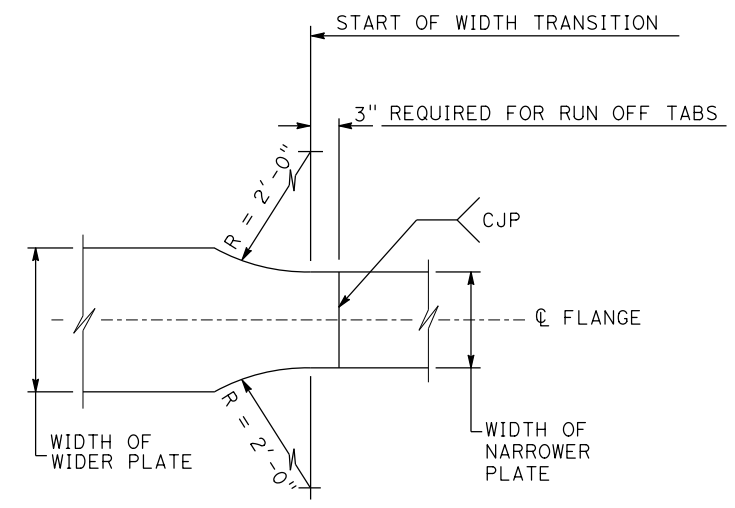


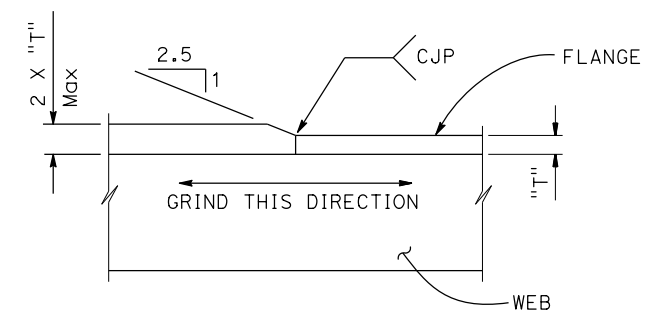
GIRDER SHOP SPLICE



WEB THICKNESS



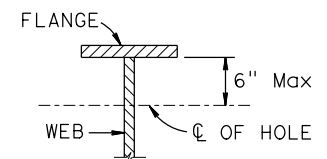
FLANGE WIDTH



FLANGE THICKNESS

NOTES:

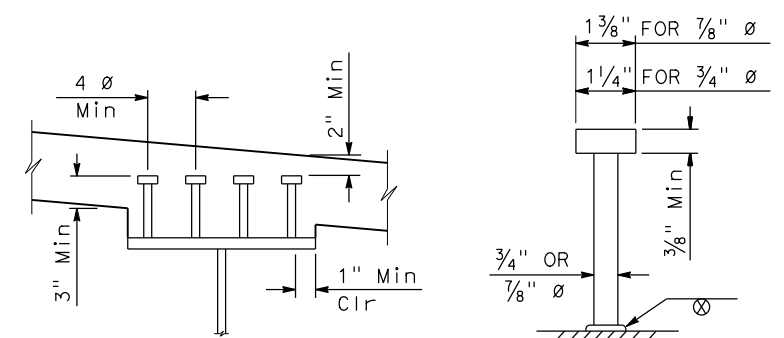
- Alternative girder splices may be permitted subject to approval by the Engineer
- Web splices:
Grind all weld surfaces flush on the exterior face of exterior girders
- Flange splices:
Grind all weld surfaces flush on tension flanges.
Grind all weld surfaces flush on compression flanges when required for non-destructive testing (NDT)
Grind all exterior weld surfaces flush on all bottom compression flanges



1" Max ϕ HOLE AT 4' \pm Min SPACING TO BE USED FOR FALSEWORK SUPPORT WHEN SPECIFIED BY THE CONTRACTOR. CONTRACTOR TO DETERMINE LOCATION, SIZE AND SPACING

2" Max ϕ HOLE TO BE DRILLED WHERE LIGHTING CONDUIT PASSES THROUGH GIRDER WEB. FOR LOCATION AND SIZE OF HOLE SEE "ROAD PLANS"

HOLES FOR CONDUIT AND FALSEWORK



LENGTHS OF STUDS TO BE DETERMINED BY THE CONTRACTOR, MINIMUM LENGTH IS 6"

ALTERNATIVE TYPES OF SHEAR CONNECTORS MAY BE PERMITTED SUBJECT TO APPROVAL BY THE ENGINEER

STUD CONNECTOR

NO SCALE