



EXECUTIVE FACT BOOKLET



May 2015



Caltrans Mission, Vision, Goals and Values

Our Mission:

Provide a safe, sustainable, integrated and efficient transportation system to enhance California's economy and livability

Our Vision:

A performance-driven, transparent and accountable organization that values its people, resources and partners, and meets new challenges through leadership, innovation and teamwork

Our Goals:

Safety and Health - Stewardship and Efficiency - Sustainability, Livability and Economy - System Performance - Organizational Excellence

Our Values:

Integrity - Commitment - Teamwork - Innovation



Malcolm Dougherty, Director
California Department of Transportation

Table of Contents

- u** Planning and Modal Programs.....2-9
- u** Sustainability
 - Environment, Equity, and Economics..... 10-25
- u** Financial Information 26-37
- u** Maintenance, Operations, and Project Delivery 38-47
- u** Appendix..... 48-53
 - Booklet Frequently Asked Questions..... 49
 - Web Resources50-51
 - Caltrans District Offices and District Directors..... 52-53

Cover photo:

Protected bicycle lanes provide clearly defined routes that are beneficial to cycling commuters and automobile drivers alike. The cover photograph was taken in Menlo Park in Santa Clara County.

For individuals with sensory disabilities, this document is available in braille, large print, in audio form, or on computer disk. To obtain a copy in one of these alternative formats, please write to:

Caltrans Public Affairs Office
1120 N Street, Mail Stop 49
Sacramento, CA 95814
or call: Paulette Lautaret (916) 657-4726

Districts and Counties

Districts	Counties
1	Del Norte, Humboldt, Lake, Mendocino
2	Lassen, Modoc, Plumas, Shasta, Siskiyou, Tehama, Trinity
3	Butte, Colusa, El Dorado, Glenn, Nevada, Placer, Sacramento, Sierra, Sutter, Yolo, Yuba
4	Alameda, Contra Costa, Napa, Marin, San Francisco, San Mateo, Santa Clara, Solano, Sonoma
5	Monterey, San Benito, San Luis Obispo, Santa Barbara, Santa Cruz
6	Fresno, Kern, Kings, Madera, Tulare
7	Los Angeles, Ventura
8	Riverside, San Bernardino
9	Inyo, Mono
10	Alpine, Amador, Calaveras, Mariposa, Merced, San Joaquin, Stanislaus, Tuolumne
11	Imperial, San Diego
12	Orange

District/County Data-Division of Transportation Planning:
Katie Benouar, Chief (916) 653-1818

Metropolitan Planning Organizations (MPOs)

Acronym	Name (Counties Represented)
AMBAG	Association of Monterey Bay Area Governments (Monterey, Santa Cruz, and San Benito)
BCAG	Butte County Association of Governments (Butte)
FCOG	Fresno Council of Governments (Fresno)
KCAG	Kings County Association of Governments (Kings)
KCOG	Kern Council of Governments (Kern)
MCTC	Madera County Transportation Commission (Madera)
MCAG	Merced County Association of Governments (Merced)
MTC	Metropolitan Transportation Commission (Alameda, Contra Costa, Marin, Santa Clara, Napa, San Francisco, Solano, San Mateo, and Sonoma)
SACOG	Sacramento Area Council of Governments (Sacramento, Placer, El Dorado, Sutter, Yolo, and Yuba)
SANDAG	San Diego Association of Governments (San Diego)
SBCAG	Santa Barbara County Association of Governments (Santa Barbara)
SCAG	Southern California Association of Governments (Imperial, Los Angeles, Orange, Riverside, San Bernardino, and Ventura)
SRTA	Shasta Regional Transportation Agency (Shasta)
SJCOG	San Joaquin Council of Governments (San Joaquin)
SLOCOG	San Luis Obispo Council of Governments (San Luis Obispo)
STANCOG	Stanislaus Council of Governments (Stanislaus)
TCAG	Tulare County Association of Governments (Tulare)
TMPO	Tahoe Metropolitan Planning Organization (El Dorado, Placer in California and Douglas, Washoe, Carson City in Nevada)

MPO Data-Division of Transportation Planning:
Katie Benouar, Chief (916) 653-1818

California Aviation

2014 State Aviation Facilities

Commercial Service Airports	28
General Aviation (GA) Airports	215
Joint Use Airport (MIPAA/ March ARB) ¹	1
Special-Use Airports	68
Hospital Heliports	160
Heliports (Fire, Police, Commuter, Private)	505

Pilots and Registered Aircraft Statistics

GA accounts for approximately 80 percent of aircraft operations statewide.

Federal Aviation Administration (FAA)

Certified Aircraft.....	29,206 ²
GA and Air Taxi Active Aircraft (2013) ³	20,560
(Certified Pilots - 61,185; Hours Flown - 2.3 Million)	
Assessed Aircraft Value (2014)	(22,645 Aircraft) \$7.9 Billion

Commercial Service Airports Air Traffic Statistics (2014)⁴

Scheduled Passenger Traffic.....	188.0 Million
Air Cargo Traffic	3.9 Million U.S. Tons

Federal Capital Improvement Investments

FAA Airport Improvement Program (AIP) Grants (2014)⁵
FFY 2013-14 (October 1, 2013 - September 30, 2014)

Commercial Service Airport Grants (51 Grants).....	\$253.2 Million
General Aviation Airport Grants (85 Grants)	\$41.7 Million

¹ March Inland Port Airport Authority (MIPAA) has access to the adjacent military managed runway only; therefore, it does not require a State permit.

² February 2015: FAA Registry.

³ Excludes commercial air carrier aircraft and other exempt aircraft.

⁴ Includes enplaned and deplaned passengers or air cargo, respectively.

⁵ Includes entitlement and discretionary funds based on 90 percent of estimated project cost.

Aviation Data - Division of Aeronautics, Gary Cathey, Chief (916) 654-4848

Division of Aeronautics

Income and Expenses

FY 2013-14 (July 1, 2013- June 30, 2014)

Income - State Aeronautics Account.....	\$5.7 Million
Source: State Excise Fuel Taxes (\$0.18/Gallon Aviation Gasoline; \$0.02/Gallon Jet Fuel)	
Expenses ¹ - California Aid to Airports Program	
State Airport Improvement Program (AIP)	
Matching Grants ² (29 Grants).....	\$516,286
Annual Credit Grants ³ (144 Grants)	\$1.44 Million

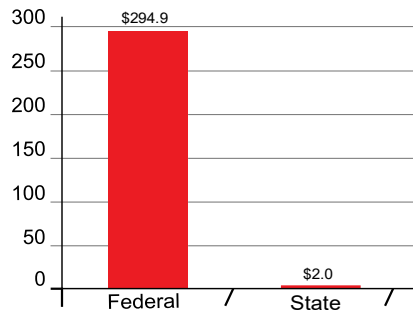
¹ Expenses exclude the Division of Aeronautics operating expenses.

² State AIP Matching Grant match rate is 5.0 percent of the FAA AIP Grant.

³ According to CA Public Utilities Code (PUC) 21682-21683.2, Annual Credit Grants must be funded prior to awarding any other California Aid to Airports Program grants.

2014 Government Investments in Public Use Airport System¹

(in Millions)



¹ Funding Sources: Airport and Airway Trust Fund; State Investments - State Aeronautics Account.

Aeronautics Data - Division of Aeronautics, Gary Cathey, Chief (916) 654-4848

California Mass Transportation

(Including Motor Bus, Rail, Street Car, Trolley, Demand Response, Rail Rapid Transit, Ferry Boats and Other)

Selected Transit Statistics¹ FY 2013-14

Passenger Trips	1.35 Billion
Passenger Fares	\$1.58 Billion
Vehicle Miles	537 Million
Number of Revenue Vehicles	18 Thousand
Operating Revenues and Capital Additions.....	\$8.05 Billion

¹ Source: State Controller's Office - Transit Operators and Non-Transit Claimant's Annual Report FY 2010-11 (The most current data available - the 2011-2014 Reports have not been published yet).

State Transit Funds Distributed Statewide FY 2013-14

Transportation Development Act (TDA)	\$1.9 Billion
State Transportation Improvement Program (STIP)	\$390 Thousand ¹
Clean Air and Transportation Improvement Program (Proposition 116)	\$0
State Local Partnership Program (SLPP)	\$0
Proposition 1A - High Speed Rail	\$150.2 Million
Proposition 1B ² - Public Transportation Modernization, Improvement and Service Enhancement Account (PTMISEA)	\$293 Million
Low Carbon Transit Operations Program (LCTOP)	\$25 Million ³
Transit and Intercity Rail Capital Program (TIRCP)	\$25 Million ^{3,4}

California Mass Transportation (cont.)

Federal Transit Funds Distributed Statewide⁵ FY 2013-14 (FFY 2014)

FTA 5310 - Elderly and Disabled Specialized Transportation	\$33.7 Million ³
FTA 5311 and 5311(F) - Non-Urbanized Area Formula Program	\$26.9 Million
FTA 5311 (B) - Rural Transit Assistance Program (RTAP)	\$370 Thousand

- ¹ \$59,500 of this figure is "federalized" = provided by the Federal Transit Administration.
- ² More Proposition 1B information on on pages 34 - 37.
- ³ To be distributed in FY 2015-16.
- ⁴ To be continuously appropriated = 10% of Total Green House Gas Reduction Fund proceeds.
- ⁵ Federal Transit Administration (FTA) Apportionment.

California Intercity Rail Ridership By Calendar Year (in Millions)

Year	Ridership
2014	5.36
2013	5.52
2012	5.60
2011	5.57
2010	5.23
2009	5.06
2008	5.58

Note: Ridership shown is the combined ridership for the Pacific Surfliner, San Joaquin, and Capitol Corridor routes.

California Intercity Rail Data - Division of Rail and Mass Transportation, Bruce Roberts, Chief (916) 654-7293

State Supported Intercity Rail Service

102 State-Owned Intercity Passenger Rail Cars

17 State-Owned Intercity Passenger Rail Locomotives

Name ¹	Capitol Corridor	Pacific Surfliner	San Joaquin
Route	Auburn-Sacramento-Oakland-San Jose	San Luis Obispo-Santa Barbara-Los Angeles-San Diego	Oakland-Sacramento-Stockton-Fresno-Bakersfield
Route Mileage	169	354	364
No. of Daily Round Trips	Auburn-Sacramento: 1 Sacramento-Oakland: 15 Oakland-San Jose: 7	San Luis Obispo-Santa Barbara: 2 Santa Barbara -Los Angeles: 5 Los Angeles-San Diego: 11	Oakland-Stockton-Bakersfield: 4 Sacramento-Stockton-Bakersfield: 2
No. of Stations	16	28	18
Railroad Companies ²	Union Pacific/Locally Owned	Union Pacific/BNSF Railway ⁴ / Locally Owned	Union Pacific/BNSF Railway ⁴
No. of Passenger Cars ³	Caltrans: 32.5 Amtrak: 2	Caltrans: 7 Amtrak: 49	Caltrans: 40.5 Amtrak: 10
No. of Cab Cars ³	Caltrans: 7 Amtrak: 0	Caltrans: 3 Amtrak: 8	Caltrans: 12 Amtrak: 0
No. of Locomotives ³	Caltrans: 9 Amtrak: 0	Caltrans: 0 Amtrak: 15	Caltrans: 8 Amtrak: 0
FFY 2013-14			
Ridership	1.4 Million	2.7 Million	1.2 Million
Passenger Miles	96.2 Million	205.5 Million	165.5 Million
Average Passenger Trip Length	68 Miles	77 Miles	139 Miles
Total Revenue	\$29.23 Million	\$70.41 Million	\$41.22 Million
State Funding	\$29.68 Million	\$36.82 Million	\$42.45 Million

¹ 100% of the three corridors is State supported.

² Amtrak operates all passenger service on railroad company and public agencies' rights-of-way. Portions of the *Pacific Surfliner* and *Capitol Corridor* routes are owned by public agencies.

³ Equipment owned by Caltrans and Amtrak assigned to each route.

⁴ Burlington Northern and Santa Fe Railway (BNSF).

California Intercity Rail Data -
Division of Rail and Mass Transportation, Bruce Roberts, Chief (916) 654-7293

Green House Gas (GHG) Annual Reductions (in Tons)

Goal is 10% Reduction by 2015 by Governor's Executive Order

Areas of Reductions	2010 Baseline Output of CO ₂	2014	Current % Change from Baseline
Pavement			
Asphalt	67,182	28,079	-58%
Concrete	45,847	16,033	-66%
Total Pavement	113,029	44,112	-61%
Maintenance and Operations (M&O)			
Alternative Fuel	1,932	2,152	11%
Fleet	249	260	4%
Lighting-Roadway ¹	41,086	52,094	27%
Total M&O	43,267	54,506	33%
Total Pavement and M&O	156,296	98,618	-36%

¹ Lighting-Roadway CO₂ reduction calculations account for more than just roadway lighting. The 2010 baseline output is the estimated CO₂ reduction from previous efforts to begin monitoring, such as LED traffic signal retrofit, induction sign lighting conversion, and a few Light Emitting Diode (LED) luminaires. The 2014 total is an estimated CO₂ reduction which includes LED luminaire installations from a prior year purchase.

Pavement and Lighting-Roadway data - Division of Maintenance:
Tony Tavares, Chief (916) 654-5849

Alternate Fuel and Fleet data - Division of Equipment:
Larry Orcutt, Chief (916) 227-9600

Caltrans Goods Use/Consumption

Areas of Reductions	2010 Baseline	2014
Asphalt: Cold In-Place Recycled (CIR) [in Tons]	45,600	1,034,613
Asphalt: Warm-Mix Asphalt (WMA) [in Tons]	15,721	80,156
Asphalt: Rubberized Hot-Mix Asphalt (RHMA) [in Tons]	2,610,071	1,063,725
Concrete [in Cubic Yards]	1,179,708	412,326

LED Replacements	FY 2012-13	Cumulative Installed
Light Emitting Diodes (LEDs) [Number Installed]	24,731	42,213



Recycled Pavement and LED data - Division of Maintenance:
 Tony Tavaras, Chief (916) 654-5849

Fuel Use

Quantity of Fuel in Gallons and Total Cost

Total Fuel Cost for FY 2013-2014	\$43,596,000
Total Fuel Used in FY 2013-2014	11,900,000
Unleaded Gas	6,523,000
Diesel	2,146,000
Alternative Fuel Used in FY 2013-2014 ¹	3,231,000
Biodiesel	2,932,000
E-85	116,000
CNG	160,000
LPG	23,000
Number of Bulk Fueling Stations	226

¹Alternate Fuel Definitions:

Biodiesel - Produced from renewable resources and contains no petroleum; in its pure form it is known as B11 (100 % biodiesel) although it is often blended with petroleum diesel; e.g., B-5, B-10.

E-85 - 85% ethanol and 15% gasoline.

CNG - Compressed natural gas.

LPG - Liquefied petroleum gas.

Fuel Use data from Division of Equipment:
Larry Orcutt, Chief (916) 227-9600

Carbon Dioxide (CO₂) Emissions from Caltrans Operations

Greenhouse Gases ¹					
Years 2010 through 2014 (in Metric Tons)					
	2010	2011	2012	2013	2014
Vehicle Fuels ²	118,042	115,118	112,758	108,810	105,338
Building Electricity and Gas	35,336	38,019	29,028	36,075	30,039
Street Lighting	64,107	61,270	56,638	54,339	21,808
Total Emissions	217,485	214,407	198,424	199,224	157,185

¹ Data has been reported to the Climate Registry but has not been verified - changes may occur.

² Vehicle fuels have been updated for all years to include biodiesel and E-85 (85% ethanol and 15% gasoline).

Greenhouse Gases Data - Division of Transportation Planning:
Katie Benouar, Chief (916) 653-1818.

State Agency Buy Recycled Campaign (SABRC) FY 2013-14

Category	Reportable Commodity ¹	Commodity with Recycled Content ²	Percent Recycled ³
Antifreeze	\$191,351	\$88,943	46.5%
Glass Products	\$169,249	-	0.0%
Lubricating Oils	\$1,524,497	\$1,138,864	74.7%
Paper Products	\$4,492	\$3,262	72.6%
Plastic Products	\$62,116	\$5,268	8.5%
Printing and Writing Paper	\$24,699	\$22,695	91.9%
Metal Products	\$42,008,077	\$42,008,077	100.0%
Tire-derived Products	\$13,716	-	0.0%
Tires ⁴	\$3,674,701	\$788,304	21.4%

¹ Total amount spent within that category to perform all statewide Division of Equipment (DOE) operations.

² Total amount spent within that category that contained post-consumable recycled content.

³ The percentage of the total amount spent that contained post-consumable recycled content.

⁴ Includes data collected from 10 of the 12 District shops.

Equipment Materials Recycled data - Division of Equipment:
Larry Orcutt, Chief (916) 227-9600

California Statistics

California State Population

37,253,956

Source: 2010 United States Census from California Department of Finance
http://www.dof.ca.gov/research/demographic/state_census_data_center/census_2010/

State Highway System-2013

Number of State Highways	265
Lane-Miles	51,326
Centerline Miles	15,104

Rural/Urban Centerline Miles		
Rural ¹	68%	10,315
Urban ²	32%	4,789
Total	100%	15,104

FWY-EXP/Non FWY-EXP Centerline Miles ³		
Fwy/Exp	26%	3,928
Non Fwy/Exp	74%	11,176
Total	100%	15,104

Interstate/Non-Interstate Centerline Miles		
Rural	16%	2,451
Urban	84%	12,653
Total	100%	15,104

¹ Rural roads are those found in areas with a population of less than 5,000.

² Urban roads are found in areas with a population of more than 5,000.

³ Non-freeway and Non-expressway includes conventional highways and highways located on one-way city streets.

Mileage Statistics - Data Source: 2013 Public Road Data Publication - Compiled by Division of Research, Innovation, and System Information: Mark Samuelson, Acting Chief (916) 654-8877

Non-State Highway System - 2013

Non-State Centerline Miles:..... 159,887

Non-State Highway Centerline Miles		
City Roads	48%	76,098
County Roads	41%	65,335
Federal-Owned Roads ¹	9%	15,022
Other Jurisdictions ²	2%	3,432
Total Non-State Centerline Miles	100%	159,887

¹ Includes roads owned by Bureau of Indian Affairs, Forest Service, Fish and Wildlife Service, Bureau of Reclamation, Military, National Park Service, Department of Defense, and Army Corps of Engineers (excludes Bureau of Land Management).

² Includes roads owned by State Forestry and Fire Protection, State Parks and Recreation, University of California, Local Agency - Golden Gate Bridge, port authorities, and tribal lands.
 Non-State Highway System Data - Compiled by Division of Research, Innovation, and System Information: Mark Samuelson, Acting Chief (916) 654-8877

Annual Vehicle Miles of Travel (AVMT)¹ 2013 (in Billions)

Non-State Highway Centerline Miles	
State Highways (Interstate AVMT= 86.2 billion of State Highway AVMT)	178.3
Local Roads (Includes city streets and county roads only)	149.7
Other Agencies (Includes Federal, other State and other local jurisdictions)	1.2
Total of All Public Roads²	329.2

¹ Totals may not equal sum of components due to independent rounding

² All public roads include those owned by cities, counties, various State and Federal agencies, and tribal lands (excludes Bureau of Land Management).

AVMT Statistics - Data Source: 2013 Public Road Data Publication - Compiled by Division of Research, Innovation, and System Information: Mark Samuelson, Acting Chief (916) 654-8877

Department of Motor Vehicles (DMV) Statistics as of December 31, 2013

Registered Vehicles ¹	
Autos	23,237,523
CVRA Trucks ²	460,521
Non-CVRA Trucks ³	5,053,859
PTI Trailers ⁴	2,125,234
Trailer Coach/CCH ⁵	389,947
Motorcycles	857,624
Misc. Vehicles ⁶	145,326
CA Based IRP Trucks ⁷	69,694
Fee-Paid Vehicles Registered	32,339,728
Fee Exempt Vehicles Registered	564,119
Total Vehicles Registered	32,903,847

Licensed Drivers	
Class A ⁸	470,898
Class B ⁹	219,010
Class C ¹⁰	23,952,181
Class M ¹¹	1,343
Total	24,643,432

¹ The Commercial Vehicle Registration Act (CVRA) changed the way the Department of Motor Vehicles registers commercial motor vehicles and some trailers.

² CVRA Trucks are motor vehicles with a declared gross vehicle weight (GVW) of 10,001 lbs or more and are affected by the new law.

³ Non-CVRA Trucks are motor vehicles with a declared GVW less than 10,001 lbs, taxis, rental limousines or vans, and are not affected by the new law.

⁴ PTI Trailers are trailers that are subject to Permanent Trailer Identification (PTI) fees under this law. All trailers except park trailers and trailer coaches are subject to PTI.

⁵ Trailer Coach/CCH are generally Motor Homes.

⁶ Includes Historical Vehicles (e.g., Spec/Farm Equipment, etc).

⁷ CA Based International Registration Plan (IRP) Trucks are IRP Truck based in California. IRP is a U.S. Based plan that allows for distribution of registration fees to member states. If a vehicle is based in CA it has a California license plate but is allowed to travel in other states.

⁸ Class A license includes everything: Busses, Big Rigs, Multi Trailers, and Cars.

⁹ Class B license includes Bus/No Trailers.

¹⁰ Class C license includes normal cars or Motor Homes/ No Motorcycles.

¹¹ Class M license includes Two-Wheel Motorcycles or a Motor-Driven cycles.

DMV Statistics - DMV Contact: Armando Botello - armando.botello@dmv.ca.gov

Statewide Registered Electric and Hybrid Vehicles by Year

Year	Hybrid	Electric
2014	838,795	79,594
2013	709,766	48,951
2012	585,329	30,672
2011	488,510	24,408
2010	395,483	18,905
2009	337,881	18,780
2008	284,324	not available

DMV Registered Electric and Hybrid Vehicles Statistics

Forecasting Unit: Brock Wells - brock.wells@dmv.ca.gov

Data is from DMV Statistical Record of Motive Power Report.

California Structures Statistics Maintenance and Repair of Bridges FY 2013-14 Annual Expenditure

Actual Expenditures - (Includes SHOPP)¹.....\$426.6 Million
State Owned Bridges and Other Structures..... 13,178

Including:

Tunnels and Tubes (Each Bore) 29

Ferry Boats 3

Large State-Owned Bay-Crossing Bridges 9

Antioch	Dumbarton	San Francisco-Oakland Bay
Benicia-Martinez	Richmond-San Rafael	San Mateo-Hayward
Carquinez	San Diego Coronado	Vincent Thomas

¹SHOPP - State Highway Operations and Protection Program

Structures Statistics - Division of Maintenance: Tony Tavares, Chief (916) 654-5849

Employee Safety

Caltrans Worker Fatalities as of September 30, 2014¹

Year	Errant Drivers	Other Accidents	Total Fatalities
2014	0	0	0
2013	0	2	2
2012	0	0	0
2011	2	1	3
2010	1	0	1
2009	2	0	2
2008	0	1	1
2007	3	0	3
2006	2	0	2
2005	0	1	1
2004	1	2	3
2003	0	0	0
2002	0	0	0
2001	0	1	1
2000	0	1	1
1999	0	2	2
1924–1998	--	--	158
Total	--	--	180

¹Does not include contractors' employees.

Employee Safety - Division of Safety and Management Services,
Cheryl McNulty, Chief (916) 227-2403

Caltrans on the Job Illness and Injury Incident Rates¹

Departmental Goal 18% Reduction by December 2020

	2011	2012	2013	3 Year Average ²	2014 ³
Injuries/Illnesses	1,545	1,527	1,425	1,499	1,460
No. of Employees	21,057	20,898	20,663	20,873	20,014
Incident Rate	7.34	7.31	6.90	7.18	7.29

¹ Incident Rate = [All injuries and illnesses requiring medical attention divided by (number of employees x 2,000) x 200,000]. Benchmark Incident Rate = 6.81

² Three year average is the industry standard for Incident Rate comparison.

³ 2014 Comparison to 2013: Injuries/Illnesses +35; Incident Rate +5.78%. 30.63% Over Goal.

Caltrans on the Job data - Division of Safety and Management Services,
Cheryl McNulty, Chief (916) 227-2403

Caltrans Full-Time Employees¹ Number and Percentage per Category² as of September 30 each Year

Employee Category	2010		2011		2012		2013		2014	
	No.	%	No.	%	No.	%	No.	%	No.	%
Engineering	8,330	42%	8,100	42%	7,949	41%	7,746	41%	7,536	40%
Maintenance	4,870	24%	4,747	25%	4,974	26%	4,883	26%	4,760	25%
All Others	6,709	34%	6,382	33%	6,524	33%	6,350	33%	6,479	35%
Total	19,909	100%	19,229	100%	19,447	100%	19,979	100%	18,775	100%

Summary of Departmental Ethnicity/Gender Percentages¹ Years 2006-2014 as of September 30 each Year

Year	Women	Men	Minorities	Caucasian
2014	25.4%	74.6%	52.8%	47.2%
2013	25.4%	74.6%	52.3%	47.7%
2012	26.02%	75.98%	51.4%	48.6%
2011	25.7%	74.3%	51.8%	48.2%
2010	25.9%	74.1%	51.7%	48.3%
2009	26.3%	73.7%	51.3%	48.7%
2008	26.5%	73.5%	50.9%	49.1%
2007	26.5%	73.5%	50.3%	49.7%
2006	26.4%	73.6%	49.8%	50.2%

¹ The employment summary reflects all time bases and tenures for employee primary positions except additional and retired annuitant positions.

² Percentage numbers are rounded on the top chart.

Employee and Ethnicity/Gender Percentages Data -
Division of Human Resources: Lydia Lewis, Chief (916) 227-5328

Small Business and Disabled Veteran Business Enterprise (DVBE) FY 2013-14 Participation Rates

Small Business/Microbusiness Participation

Total Dollars Awarded for State Funded

Contracts and Procurements	\$1,074,833,766
Small/Micro Business Participation	\$303,566,873
Percentage	28.24%

Disabled Veteran Business Enterprise (DVBE)

Total Dollars Awarded for State Funded

Contracts and Procurements	\$1,074,833,766
Dollars of DVBE Participation	\$40,695,744
Percentage	3.79%

Source: Contracting Activity Report, DPAC, FY2013-14

SB-DVBE Statistics - Office of Business and Economic Opportunity (OBEO):
Angela M. Shell, Assistant Director (916) 324-0990

Summary of Departmental Ethnicity/Gender Percentages

2013-14 Fiscal Year by District as of September 30, 2014

2005-06 to 2013-14 Fiscal Year Totals and Percentages

District	Total Caltrans Workers ¹	African-American	American Indian	Asian	Filipino	Hispanic	Pacific Islander	Caucasian	Other	Men	Women	Disability
District 1	572	0.9%	2.3%	1.0%	1.7%	5.8%	0.3%	83.2%	4.7%	76.2%	23.8%	15.7%
District 2	741	0.8%	1.3%	0.9%	0.4%	4.9%	0.5%	89.5%	1.6%	81.8%	18.2%	12.6%
District 3	1,514	3.1%	1.1%	8.3%	1.3%	10.4%	0.7%	72.3%	2.9%	80.8%	19.2%	10.8%
District 4	3,063	13.7%	0.4%	27.9%	9.2%	12.0%	0.9%	31.5%	4.3%	75.3%	24.7%	9.1%
District 5	660	1.8%	0.5%	4.4%	2.7%	24.4%	0.2%	63.5%	2.6%	78.2%	21.8%	14.4%
District 6	1,196	5.1%	1.3%	14.5%	2.8%	26.3%	0.7%	46.2%	3.3%	77.8%	22.2%	15.9%
District 7	2,374	16.0%	0.3%	24.0%	5.3%	26.9%	0.5%	23.0%	4.0%	79.2%	20.8%	10.8%
District 8	1,370	9.7%	0.3%	16.1%	3.1%	27.4%	0.4%	38.5%	4.5%	80.0%	20.0%	15.2%
District 9	283	0.4%	6.0%	1.4%	1.1%	8.5%	0.4%	81.3%	1.1%	85.2%	14.8%	8.8%
District 10	766	4.6%	0.9%	14.1%	5.6%	15.1%	0.9%	55.7%	3.0%	80.0%	20.0%	14.6%
District 11	1,218	6.0%	0.3%	10.4%	6.7%	26.9%	0.6%	45.4%	3.7%	73.6%	26.4%	10.6%
District 12	775	5.8%	0.3%	25.3%	3.2%	19.2%	0.8%	39.0%	6.5%	75.6%	24.4%	13.5%
HQ	5,439	6.3%	0.5%	21.0%	4.7%	14.2%	0.5%	49.2%	3.6%	65.8%	34.2%	12.2%
and Percentages												
2013-14	19,971	7.8%	0.7%	17.8%	4.7%	17.4%	0.6%	47.2%	3.7%	74.6%	25.4%	12.1%
2012-13	20,387	7.8%	0.6%	17.1%	4.6%	17.1%	0.6%	47.7%	3.8%	74.6%	25.4%	12.6%
2011-12	20,686	7.9%	0.6%	17.9%	4.7%	16.8%	0.6%	48.0%	3.6%	74.3%	25.7%	13.3%
2010-11	20,511	7.7%	0.6%	18.1%	4.7%	16.7%	0.5%	48.2%	3.4%	74.3%	25.7%	14.1%
2009-10	20,900	7.7%	0.6%	18.1%	4.7%	16.6%	0.5%	48.3%	3.4%	74.3%	25.9%	14.4%
2008-09	21,502	7.7%	0.6%	17.9%	4.8%	16.3%	0.5%	48.7%	3.4%	73.7%	26.3%	15.1%
2007-08	22,081	7.8%	0.6%	17.6%	4.9%	16.1%	0.5%	49.1%	3.3%	73.5%	26.5%	6.5%
2006-07	21,703	7.9%	0.6%	17.3%	4.8%	16.0%	0.5%	49.7%	3.3%	73.5%	26.5%	6.7%
2005-06	20,502	8.1%	0.6%	16.7%	4.7%	16.0%	0.5%	50.2%	3.3%	73.6%	26.4%	6.9%

¹ The employment summary reflects all time bases and tenures for employee primary positions except additional and retired annuitant positions.

Transportation Revenue Facts

Federal Fuel Excise Taxes

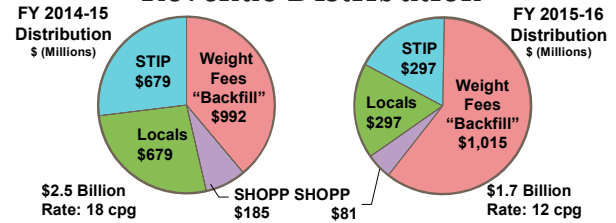
- 18.4 cents per gallon gasoline tax.
- 24.4 cents per gallon diesel tax.
- Taxes are collected and deposited in the Federal Highway Trust Fund.
- Taxes are returned to the states in the form of Federal Obligation Authority (OA) for reimbursement.
- California's annual OA for Federal Fiscal Year 2013-14, was approximately \$3.4 billion, of which nearly 37% was available for local streets and roads. For fiscal year 2014-15, only partial funding (through May 31, 2015) has been authorized. Full-year funding is not available at this time.

State Fuel Excise Tax on Gasoline

- 30 cents per gallon effective July 1, 2015. This is a decrease of six cents per gallon from 2014-15.
 - Adjusted annually by State Board of Equalization. (BOE) to maintain revenue neutrality with the loss of State sales tax on gasoline. (See charts on Page 27.)
 - 18 cents per gallon base state excise tax, unchanged since 1994.
 - Approximately 64% of revenues to the State.
 - Approximately 36% of revenues to Cities and Counties.
 - 12 cents per gallon price-based excise tax effective July 1, 2015, a decrease of 6 cents per gallon.
 - The first allocation of funding is used to backfill transportation programs previously funded by weight fees (see section under Weight Fees on page 28), with the remaining split as follows:
 - 44% to State Transportation Improvement Program (STIP).
 - 44% to Local Streets and Roads.
 - 12% to State Highway Operation Protection Program (SHOPP).

Transportation Revenue Facts (cont.)

Price-based Excise Tax Revenue Distribution



State Fuel Excise Tax on Diesel

- 13 cents per gallon effective July 1, 2015. This is an increase of two cents per gallon from 2014-15.
 - Adjusted annually by BOE to maintain revenue neutrality with the increase to State sales tax on diesel:
 - About 48% of revenue to the State.
 - About 52% of revenue to cities and counties.

State Sales Tax on Gasoline

- General Statewide sales tax on gasoline was eliminated July 1, 2010.

State Sales Tax on Diesel

(Available for Transportation Purposes)

- 6.5% sales tax on diesel:
 - 4.75% base tax.
 - 1.75% additional tax, effective July 1, 2014.
 - About 64% of revenues to State Transit Assistance.
 - About 36% of revenues to the Public Transportation Account (PTA).

Transportation Revenue Facts - Division of Budgets: Steven Keck, Chief (916) 654-4556

Transportation Revenue Facts (cont.)

Weight Fees

In addition to the revenue generated through fuel taxes, the State collects commercial vehicle registration fees, also known as “weight fees”. Weight fees are calculated by the Department of Motor Vehicles, are based on the gross vehicle weight of commercial vehicles, and are deposited into the State Highway Account (SHA).

Weight Fee Swap

- In 2010, California voters passed Proposition 22, which amended the California Constitution by significantly restricting the State from using fuel excise tax revenues for General Fund (GF) relief, which was previously allowed.
- In 2011, the passage of AB105 created a “weight fee swap” which allowed the State to use weight fee revenues, rather than fuel excise tax revenues for GF relief.
 - The bill authorizes the transfer of weight fee revenues from the SHA to the GF for transportation bond debt service and loans.
- To offset this diversion, an equivalent amount of the price-based excise tax is transferred to the SHA.

Transportation Revenue Facts - Division of Budgets: Steven Keck, Chief (916) 654-4556

State Gasoline Excise Tax History

Effective Date	Rate/gallon	Notes
July 1, 2015	\$0.300	Scheduled to decrease by 6 cents/gallon
July 1, 2014	\$0.360	Decreased by 3.5 cents/gallon
July 1, 2013	\$0.395	Increased by 3.5 cents/gallon
July 1, 2012	\$0.360	Increased by .003 cent/gallon
July 1, 2011	\$0.357	Increased by .004 cent/gallon
July 1, 2010 ¹	\$0.353	Increased by 17.3 cents/gallon
January 1, 1994	\$0.180	Increased by one cent/gallon
January 1, 1993	\$0.170	Increased by one cent/gallon
January 1, 1992	\$0.160	Increased by one cent/gallon
January 1, 1991	\$0.150	Increased by one cent/gallon
August 1, 1990	\$0.140	Increased by five cents/gallon
January 1, 1983	\$0.090	Increased by two cents/gallon
October 1, 1963	\$0.070	Increased by one cent/gallon
July 1, 1953	\$0.060	Increased by one cent/gallon
July 1, 1947	\$0.045	Collier-Burns Act; Fuel tax increase by 1.5 cents/gal.
July 29, 1927	\$0.030	One cent/gal. added for new highway construction
October 1, 1923	\$0.020	First gas tax approved by voters

Note: State and Federal taxes for aviation fuel are not included in this summary.

¹ ABX8 6 and ABX8 9 Fuel Tax Swap eliminated State Sales Tax on gasoline and replaced it with an increase to the Excise Tax on gasoline. Beginning July 2010, taxes will be adjusted annually by the Board of Equalization to maintain revenue neutrality with the loss of State Sales Tax on gasoline.

Source: Fuel Tax History - California State Board of Equalization (BOE) website.
http://www.boe.ca.gov/sptaxprog/tax_rates_stdft.htm#9
<http://www.boe.ca.gov/sutax/gasswapfaq.htm#1>

Gasoline Excise Tax History - Division of Budgets:
Steven Keck, Chief (916) 654-4556

State Transportation Construction Capital Allocations (in Millions) and Jobs Created

Capital Allocations	Actual			Projected
	2011-12	2012-13	2013-14	2014-15
Proposition 1B ¹	\$3,946	\$1,139	\$246	\$40
State Transportation Improvement Program (STIP)	\$372	\$336	\$519	\$551
State Highway Operations and Protection Program (SHOPP) ²	\$1,894	\$1,095	\$1,835	\$1,800
Total Capital Allocations	\$6,212	\$2,570	\$2,600	\$2,391
Total Gross State Product Gain	\$12,920	\$5,346	\$5,400	\$5,000
Jobs Created - Actual And Projected				
Total Jobs Created in California	Actual			Projected
	2011-12	2012-13	2013-14	2014-15
	111,900	46,300	46,800	43,000

¹ Includes STIP Augmentation and SHOPP Augmentation projects

² Includes SHOPP Minor projects. Allocations per 4th Quarter Finance Report.

Capital Allocations - Division of Transportation Programming:
Bruce DeTerra, Chief (916) 654-4013

Product Gain/Jobs Created - Division of Transportation Planning:
Katie Benouar, Chief (916) 653-1818

Countywide Transportation Sales Tax Measures Transit Districts (Permanent 0.5% Tax)

- BART (Alameda, Contra Costa, San Francisco)
- San Mateo • Santa Clara • Santa Cruz

Countywide Transportation Sales Tax Measures¹ (cont.) Self-Help Counties - Temporary 0.5% Tax (in Millions)

County	Duration	Est. 2015 Revenue
Alameda	2015-2045	\$301
Contra Costa	1989-2034	\$81
Fresno	1987-2027	\$72
Imperial	1990-2050	\$14
Los Angeles (1% Tax)	Permanent	\$1,538
Los Angeles (Measure R)	2009-2039	\$769
Madera	1990-2027	\$8
Marin	2005-2025	\$27
Napa (Measure T) ²	2018-2043 (Est.)	-
Orange	1991-2041	\$326
Riverside	1989-2039	\$172
Sacramento	1989-2039	\$111
San Bernardino	1990-2040	\$175
San Diego	1988-2048	\$278
San Francisco	1990-2034	\$95
San Joaquin	1991-2041	\$57
San Mateo	1989-2033	\$85
Santa Barbara	1990-2040	\$37
Santa Clara	1996-2036 (Est.)	\$221
Santa Clara - (BART Ext 0.125%)	2013-2043 (Est.)	\$55
Sonoma (0.25%)	2005-2025	\$23
Sonoma-Marín (SMART 0.25%)	2009-2029	\$36
Tulare	2007-2037	\$32
Total Estimated 2014 Revenue		\$4,513

¹ Article XIII B of the State Constitution provides the authority and requirements for the imposition of local sales tax measures subject to voter approval.

Revised Revenue Estimates for 2014 (estimates were updated in 2013 for this report).

² Napa will impose a one-half of one percent transactions and use tax for 25 years (Measure T). This tax will fund local street and road improvements and will be implemented once the Flood Protection tax (Measure A) expires. Measure A is expected to expire by 2018.

Sales Tax Measure Data - Economic Analysis Branch - Division of Transportation Planning:
Katie Benouar, Chief (916) 653-1818

Financial Information, Expenditures (in Billions)

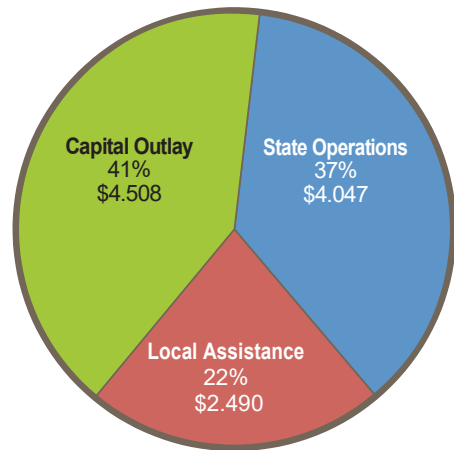
FY 2014-15 Budget	Proposed		Enacted	
	Amount	Percentage	Amount	Percentage
State Funds	\$4.364	40.2%	\$4.509	40.8%
Federal Expenditure Authority	\$4.781	44.0%	\$4.862	44.0%
Reimbursements	\$1.594	14.7%	\$1.558	14.1%
Traffic Congestion Relief Fund	\$0.119	1.1%	\$0.116	1.1%
Total	\$10,858	100.0%	\$11.045	100.0%

Category Of Expenditures	Proposed		Enacted	
	Amount	Percentage	Amount	Percentage
State Operations	\$4.058	37.4%	\$4.047	36.6%
Local Assistance	\$2.509	23.1%	\$2.490	22.5%
Capital Outlay	\$4.291	39.5%	\$4.508	40.8%
Total	\$10,858	100.0%	\$11.045	100.0%

Note: Totals may not equal sum of components due to independent rounding.

Financial Data - Division of Budgets: Steven Keck, Chief (916) 654-4556

Enacted Budget Transportation Expenditures FY 2014-15 (in Billions)



- State Operations
- Local Assistance
- Capital Outlay

Financial Data - Division of Budgets: Steven Keck, Chief (916) 654-4556

Allocations By Element

FY 2013-14 (in Thousands)

Program	Capital Outlay	Local Assistance	Mass Transit	Rail	Total Allocation
State Transportation Improvement Program (STIP) ¹	\$440,592	\$82,859	\$59,918	\$24,900	\$608,269
State Highway Operation and Protection Program (SHOPP) Augmentation	\$10,039	\$0	\$0	\$0	\$10,039
Proposition 1B²					
Corridor Mobility Improvement Account (CMA)	\$0	\$0	\$0	\$0	\$0
Route 99 Bond	\$42,759	\$0	\$0	\$0	\$42,759
State-Local Partnership Program (SLPP)	\$0	\$0	\$0	\$0	\$0
Trade Corridor Improvement Fund (TCIF) ³	\$87,682	\$159,012	(\$4,079)	\$19,573	\$262,188
Traffic Light Synchronization Program (TLSP)	\$0	\$12,117	\$0	\$0	\$12,117
Intercity Rail Improvement	\$0	\$0	\$0	\$10,393	\$10,393
Local Bridge Seismic Retrofit Program (LBSRP)	\$0	\$3,562	\$0	\$0	\$3,562
Public Transit Modernization Improvement, and Service Enhancement Account (PTMISEA)	\$0	\$0	\$752,892	\$0	\$752,892
Highway-Railroad Crossing Safety Account (HRCSA)	\$0	\$16,574	\$0	\$0	\$16,574
Proposition 1B Total	\$130,441	\$191,265	\$748,813	\$29,966	\$1,100,485

¹ Includes Proposition 1B STIP Augmentation allocations.

² Includes de-allocations that were a result of contract award savings.

³ Capital Outlay amount includes SHOPP/TCIF.

All Proposition 1B data Except PTMISEA - Division of Transportation Programming; Bruce DeTerra, Chief (916) 654-4013

PTMISEA Data - Division of Rail and Mass Transportation:
Bruce Roberts, Chief (916) 654-7293

Proposition 1B Program

Transportation Bond Act - As of June 30, 2014 (in Thousands)

Program	Available	Committed ¹	Balance
Caltrans (Dollars in Thousands)			
Corridor Mobility Improvement Account (CMIA)	\$4,500,000	\$4,500,000	\$0
Route 99 Corridor Account (Rte 99)	\$1,000,000	\$986,967	\$13,033 ²
Trade Corridors Improvement Fund (TCIF)	\$2,000,000	\$1,953,238	\$46,762 ²
State Transportation Improvement Program (STIP)	\$2,000,000	\$1,979,397	\$20,603 ²
State Highway Operation and Protection Program (SHOPP)	\$500,000	\$500,000	\$0
Traffic Light Synchronization Program (TLSP)	\$250,000	\$250,000	\$0
State-Local Partnership Program (SLPP)	\$1,000,000	\$1,000,992	(\$992) ³
Local Bridge Seismic Retrofit Account (LBSRA)	\$125,000	\$125,000	\$0
Highway-Railroad Crossing Safety Account (HRCSA)	\$250,000	\$233,187	\$16,813 ³
Intercity Rail Improvement (IRI) ⁴	\$400,000	\$400,000	\$0
Public Transportation Modernization, Improvement, and Service Enhancement Account (PTMISEA-Local Transit) ⁵	\$3,600,000	\$2,755,733	\$844,267
Caltrans Total	\$15,625,000	\$14,684,514	\$940,486
Non-Caltrans Dollars			
Local Street and Road, Congestion Relief, and Traffic Safety Account	\$2,000,000	\$1,950,000	\$50,000
Goods Movement Emission Reduction Program	\$1,000,000	\$760,000	\$240,000
School Bus Retrofit and Replacement Account	\$200,000	\$200,000	\$0
Port, Harbor, and Ferry Terminal Security Account	\$100,000	\$100,000	\$0
Transit System Safety, Security & Disaster Response Account	\$1,000,000	\$542,466	\$457,534
Non-Caltrans Total	\$4,300,000	\$3,552,466	\$747,534
Proposition 1B Total	\$19,925,000	\$18,236,980	\$1,688,020

¹ Total amounts programmed through June 30, 2014, including the two percent reserve for bond administration costs, except for Local Transit, which is the amount of funding awarded to local agencies as of that date.

² Increase in available balance from June 30, 2013 is due to project savings not yet programmed.

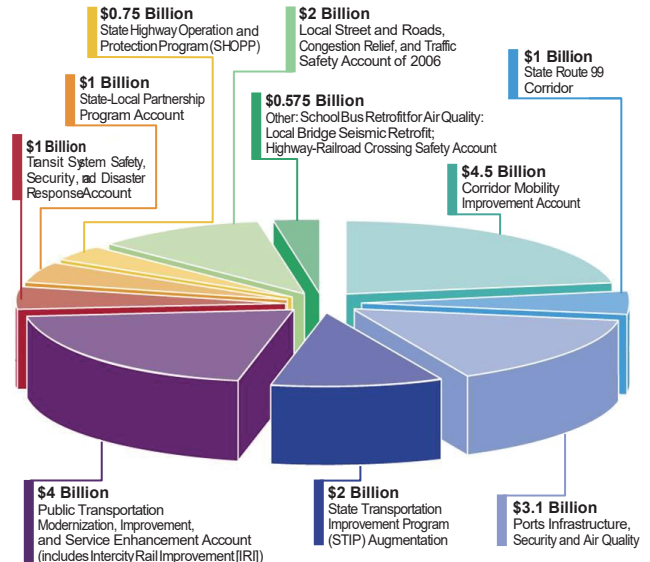
³ The negative number is the result of allocations for projects and Capital Outlay Support (COS), plus the two percent reserve for bond administration costs. Bond administration cost savings will offset the overage and the program will not exceed its authorized amount.

⁴ Data received from Division of Rail and Mass Transportation.

⁵ Funds are from the PTMISEA Program.

Proposition 1B Transportation Bond Act

As approved by the voters in the November 2006 general elections, Proposition 1B enacts the Highway Safety, Traffic Reduction, Air Quality, and Port Security Bond Act of 2006 to authorize \$19.925 billion of state general obligation bonds for specified purposes, including high-priority transportation corridor improvements, State Route 99 corridor enhancements, trade infrastructure and port security projects, school bus retrofit and replacement purposes, state transportation improvement program augmentation, transit and passenger rail improvements, state-local partnership transportation projects, transit security projects, local bridge seismic retrofit projects, highway-railroad grade separation and crossing improvement projects, state highway safety and rehabilitation projects, and local street and road improvement, congestion relief, and traffic safety.



Selected Maintenance Costs

FY 2013-14 Actual Expenditures and Encumbrances (in Millions)

Annual Maintenance and Repair of Bridges	\$165.2
Non-Landscaped Weed Control	\$19.8
Maintenance of Landscaped Property (36,084 irrigated, 3,341 non-irrigated landscape acres)	\$66.8
Litter and Debris Removal	\$62.7
Safety Roadside Maintenance and Cleanup (87 Roadside Rests Statewide)	\$12.8
Highway Lighting ¹ (79,338 luminaires)	\$28.5
Highway Signalized Intersections ¹ (4,724 total highway signalized intersections)	\$13.4
Lane Striping (81,071 linear miles)	\$11.0

¹Maintenance and power costs included, cost does not include utility bills paid directly by Locals.

General Maintenance¹

FY 2013-14 Actual Expenditures and Encumbrances (in Millions)

Roadbed (HM 1)	\$329.8	22%
Roadside (HM 2)	\$306.8	21%
Bridges/Structures (HM 3)	\$165.2	11%
Traffic Guidance and Electrical (HM 4)	\$123.4	8%
Facility and Auxiliary Services (HM 5)	\$147.4	10%
Snow and Storm Control (HM 6)	\$37.8	3%
Radio (HM 7)	\$34.4	2%
Total	\$1479.3	100%

¹ Includes: Highway Maintenance (HM) contracts, and State forces for Personal Services (PS) and Operating Expenses (OE).

Maintenance Data - Division of Maintenance: Tony Tavares, Chief (916) 654-5849

Adopt-A-Highway Program

as of July 30, 2014

Volunteer Adoptions	2,339
Sponsored Adoptions	779
Suspended Permits (still active, under construction, etc.)	63
Total Adoptions	3,181
Litter Removal Groups	2,780
Graffiti Removal Groups	39
Wildflower Groups	15
Tree Planting Groups	40
Vegetation Management Groups	244
Estimated Shoulder Miles Adopted for Litter Removal	10,178
Amount of Litter Collected (cubic yards) in FY 2013-14	16,134
Estimated Acreage for:	
Wildflower	45
Vegetation Management	1,220
Tree Planting	120
Estimated Participants	13,681
Estimated Value of Litter Collection to the State	\$20.52 Million

Adopt-A-Highway Data - Division of Maintenance: Tony Tavares, Chief (916) 654-5849

Roadside

Vista Points ¹	146
Roadside Rest Areas ²	87

¹ Park and Rides and Vista Points are "location types" not adoption types, therefore they are not tracked separately. For example, a litter removal adoption may be located at a park and ride.

² Adoptions are not permitted at rest areas.

Roadside Data - Division of Design: Tim Craggs, Chief (916) 654-3858

Seismic Retrofit Program

As of December 31, 2014

Bridge Type	Total Number	Completed	Percent Complete
State Owned	2,194	2,193	99.9%
Toll	11 ¹	10 ²	99%
Local	1,242	994 ³	80%

¹ Coronado and Vincent Thomas Bridges are in the program but are no longer tolled.

² The East span of the San Francisco-Oakland Bay Bridge is now open to traffic but remains under construction, including completion of ramps and demolition of the old span.

³ Bay Area Rapid Transit (BART) requested removal of bridges from the Local Bridge Seismic Retrofit Program to be completed by BART.

State Data - Division of Project Management: James Davis, Chief (916) 654-2494

Local Data - Division of Local Assistance: Rihui (Ray) Zhang, Chief (916) 653-1776

Toll Data - Dan McElhinney, Chief Deputy District Director Caltrans District 4 - (510) 220-0738 (cell)

Highway Maintenance Pavement Costs

FY 2013-14

SHOPP Pavement \$480 Million

Annual Pavement Maintenance Expenditure \$235 Million

(Includes support)

Pavement Condition Percent of Distressed Lane Miles

Year	% of Distressed
2014	Not Available
2013	16%
2012	15%
2011	25%
2008-10	Not Available
2007	26%
2006	27%
2005	28%
2004	25%
2003	24%

Pavement Cost and Condition Data - Division of Maintenance:
Tony Tavares, Chief (916) 654-5849

Equipment

In-service Fleet Count by Category - February 3, 2015

Equipment Category	Number of Units
Passenger Vehicles	1,848
Light Commercial	1,952
Light Duty Utility Vehicles	1,539
Light Duty Trucks	1,695
Medium Duty Trucks	1,281
Heavy Duty Trucks	537
Road Maintenance Equipment	960
Landscape Maintenance Equipment	343
Construction Equipment	617
Snow Equipment	213
Industrial Equipment	266
Trailers	654
Other (Boats, Chain Control Campers, Barrier Machines)	29
Total	11,934

(Fuel Use table has been moved to the Sustainability section, page 14)

Other Equipment Statistics

Number of Main Shops 13

Number of Sub-Shops 13

Number of Home Storage Permits

Allocated to Caltrans 421

Equipment Data - Division of Equipment: Larry Orcutt, Chief (916) 227-9600

Transportation Management Systems

as of February 2015

Closed Circuit Televisions	2,248
Changeable Message Signs	812
Extinguishable Message Signs	540
Highway Advisory Radios	181
Roadside Weather Information Stations (RWIS)	125
Ramp Meters	2,691
Traffic Signals (State Owned)	6,247
Freeway Vehicle Detection Stations	16,490
Mainline	8,849
HOV (Carpool)	1,979
On-Ramps	2,834
Off-Ramps	2,099
Fwy to Fwy Connectors	510
Collector/Distributor	59
Uptime (Non-detection) [Percent]	91.5%
Detection Health [Percent]	63.1%
Traffic Management Centers	13
24/7 Operation (with CHP Call Centers)	
[Located in Districts 3, 7, 8, 11, and 12]	5
24/7 Operation (not with CHP Call Centers)	
[Located in Districts 4, 6, 10, and 3 (Kingvale) seasonally]	4
16 hrs Operation (Mon-Fri / on-call weekends)	
[Located in Districts 1, 2, 5, and 9]	4

Traveler Services

as of February 2015

QuickMap Web Visits	1,974,173
Call Boxes (Joint Management: Regional Agencies/ Caltrans/CHP)	10,836
Freeway Service Patrol - Fiscal Year 2013/14	
Disabled Vehicle Assists	657,420
Centerline Lane Miles Served	1,806
Days Safety Campaigns Posted on	
Changeable Message Signs	128

Managed Lanes

as of February 2015

Park and Ride Lots ¹	322
HOV (Carpool) Lanes [in lane miles]	
In Operation	1,385
Under Construction	151
Proposed	693
HOV (Carpool) Lane Vehicle Access ²	
Registered White Clean Air Vehicle Stickers	64,092
Registered Green Clean Air Vehicle Stickers	56,516
Express Lanes ³ (in lane miles)	
In Operation	221
Under Construction	46
Proposed	1,903

¹ Includes State-owned lots, privately owned lots, and lots operating under a cooperative agreement with other agencies.

² HOV Lane Vehicle Access Data is obtained from Department of Motor Vehicles (DMV)

³ An Express Lane or High Occupancy Toll (HOT) Lane is a High Occupancy Vehicle (HOV or carpool) lane in which motorist may drive alone if they pay a toll.

Traffic Congestion

December 2014

Annual Vehicle Hours of Delay¹ 99.2 Million

Traffic Census as of January 2015

Total Count Sites in Traffic Census Network 2,891

Continuous Weigh-In-Motion (WIM) Stations² 134

Permits

Fiscal Year 2013/14

Encroachment Permits Issued 10,683

Permitted Outdoor Advertising (Displays)³ 8,840

Commercial Vehicle Services

as of January 2015

Oversize/Overweight Permits Issued⁴ 152,844

Commercial Vehicle Enforcement Facilities 54

¹ Congestion is measured on urban freeways when speeds are less than 35 mph.

² WIM Stations include pre-pass and by-pass.

³ Includes all types of permitted displays.

⁴ Includes all types of transportation permits.

Traffic Congestion, Traffic Census, Permits, and Commercial Vehicle Services Data -
Division of Traffic Operations: Thomas Hallenbeck, Chief (916) 654-2352

Statewide Collisions in Construction/Repair Zones on California State Highways¹

Year	Collisions			Number of Fatalities	Number of Injuries
	Total	Fatal	Injury		
2012	4,940	44	1,592	47	2,439
2011	4,005	37	1,313	42	2,079
2010	3,050	30	1,014	40	1,583
2009	3,813	37	1,180	48	1,836
2008	4,374	43	1,364	45	2,062
2007	5,163	42	1,553	47	2,339
2006	5,606	60	1,741	77	2,742
2005	4,586	45	1,462	67	2,322
2004	4,094	29	1,369	35	2,166
2003	4,564	40	1,456	51	2,482
2002	5,110	36	1,518	39	2,500
2001	4,898	40	1,480	48	2,379
2000	5,359	41	1,612	47	2,708
1999*	6,436	45	1,886	54	3,148
1998	6,901	44	2,140	54	3,537
1997	5,755	39	1,936	51	3,230
1996	6,075	53	1,960	63	3,119
1995	6,384	46	2,034	62	3,338
1994	6,600	48	2,226	55	3,531
1993	5,077	42	1,672	56	2,821
1992	4,668	29	1,787	34	2,932

¹ Numbers represent collisions on state highway facilities where the roadway condition identified by the reporting officer was 'Construction/Repair Zone' and not necessarily occurring within the coned area of a construction/repair zone. The most recent full year of data is 2009.

² 1999 Slow For The Cone Zone Campaign implemented.

Collision Data in Construction Zones - Traffic Accident Surveillance and Analysis System (TASAS) Data - Division of Research, Innovation, and System Information:
Mark Samuelson, Acting Chief (916) 654-8877

Collision Data on California State Highways

Year	Collisions			Number of		Fatality Rate (Per 100 MVM ¹)
	Total	Fatal	Injury	Fatalities	Injuries	
2012	146,581	1,083	50,667	1,210	73,745	0.67
2011	142,310	1,060	47,686	1,167	69,834	0.66
2010	145,685	1,009	48,474	1,121	70,701	0.64
2009	142,221	1,159	47,673	1,303	69,964	0.74
2008	149,225	1,288	49,827	1,429	72,770	0.81
2007	169,807	1,497	55,884	1,713	82,614	0.94
2006	177,839	1,628	57,269	1,841	85,972	1.01
2005	182,714	1,694	59,856	2,006	90,963	1.10
2004	182,509	1,609	60,042	1,841	92,330	1.02
2003	179,172	1,616	58,240	1,892	90,801	1.08
2002	176,882	1,592	56,521	1,873	89,348	1.09
2001	174,882	1,544	56,957	1,770	90,374	1.05
1999	158,115	1,371	52,824	1,599	84,731	1.009

¹MVM = Million Vehicle Miles

Source: Collision Data Annual Publication.

Collision Data on State Highways - TASAS Data - Division of Research, Innovation, and System Information: Mark Samuelson, Acting Chief (916) 654-8877

Traffic Safety Projects & Safety Investigations

FY 2013-14

Number of Safety Projects.....	45
Safety Projects Cost	\$119.2 Million
Safety Investigations	Approximately 2,200

Traffic Safety Project Data - Division of Traffic Operations:

Thomas Hallenbeck, Chief (916) 654-2352

Asset Delivery¹ Fiscal Year 2013-14

Mobility	
HOV Lanes (new lane miles)	20
Mixed Flow Lanes (new lane miles)	60
Operational Lanes (new lane miles)	20
New Structures (each)	5
Roadway Rehabilitation (lane miles)	3,182
Structure Rehabilitation (each)	617
Transportation Management System (TMS) Elements Installed ²	137
Environmental	
Landscaping (acres)	145
Soundwall (linear miles)	3.4

Asset Definitions

HOV Lanes - Any lane designated for high occupancy vehicles that is added to the highway system.

Mixed Flow Lanes - Any highway lanes that are not HOV and that are added to the existing system.

Operational Lanes - Turnouts, passing lanes, truck climbing lanes.

Structure - Underpass, Overhead, Bridge and Overhead, Viaduct, Bridge, Overcrossing, Undercrossing, Separation.

Roadway Rehabilitation - Restoration and major maintenance of roadway lanes and other pavement life extension work.

Structure Rehabilitation - Restoration and major maintenance of a structure, and other structure life extension work.

Landscaping - Planting that provides safety improvements, erosion control/storm water pollution prevention, highway revegetation, and required mitigation planting

Soundwall - Typically reinforced concrete with a height of 8 to 16 feet depending on design needs.

TMS Elements Installed - Field elements used in the management and operation of the transportation system including: closed-circuit televisions, changeable message signs, extinguishable message signs, highway advisory radios, roadside weather information stations, ramp meters, vehicle detection, or signals.

¹ All data, except the TMS Elements Installed, is based on the estimated Construction Completion Acceptance date, and is collected as part of the Project Plans, Specifications, and Estimate (PS&E) submittal process in the Office Engineer, Division of Engineering Services.

² TMS Elements vary with items installed each year; this category is reported as one.

Asset Delivery and Asset Definitions - Division of Research, Innovation, and System Information: Mark Samuelson, Acting Chief (916) 654-8877

TMS Elements Installed Data and Definition - Division of Traffic Operations: Thomas Hallenbeck, Chief (916) 654-2352

Appendix

Appendix	48-53
Booklet Frequently Asked Questions	49
Web Resources	50-51
Caltrans District Offices and District Directors	52-53

Booklet Frequently Asked Questions

Is the Executive Fact Booklet (EFB) available online?

The EFB is available on our internal website at:
<http://onramp.dot.ca.gov/docs/ExecutiveFactBooklet.pdf>

The booklet is available on the internet at:
http://www.dot.ca.gov/hq/tsip/data_library/EFB/2015_EFB.pdf

What years are reported in the EFB?

Each division or program reports the latest data they have available. Data are reported using California (State) Fiscal Years or calendar years if years are noted singularly. If Federal Fiscal years are used, this is noted on the table as FFY.

What is the current production schedule for the EFB?

The EFB is scheduled to be produced approximately the fifth month of the calendar year.

Who maintains final production approval?

Caltrans Division of Public Affairs

Who is in charge of compilation and production of the EFB?

Division of Research, Innovation, and System Information:
Mark Samuelson, Acting Chief (916) 654-8877

Contacts:

Paulette Lautaret (916) 657-4726
paulette.lautaret@dot.ca.gov

Jahangir Kashkooli (916) 654-8170
jahangir.kashkooli@dot.ca.gov

Web Resources

Caltrans' Internet Home: External Caltrans site

www.dot.ca.gov

Caltrans' Intranet Home: Internal Caltrans site

onramp.dot.ca.gov

Accounting: CT Travel Guide/Vendor Pmts/EFT/

www.dot.ca.gov/hq/asc/index.htm

Active Transportation Program (ATP)

www.dot.ca.gov/hq/LocalPrograms/atp/

Adopt-A-Hwy Program: Organizations help maintain sections

adopt-a-highway.dot.ca.gov

Advertised Projects: Projects for bid

www.dot.ca.gov/hq/esc/oe/weekly_ads/index.php

Alternative Fuels Locator: US Dept of Energy

www.afdc.energy.gov/locator/stations/

Amtrak California: Timetables/Stations/Routes/Deals

www.amtrak.com/home/

Aviation Planning/Engineering/Permits/Grants

www.dot.ca.gov/hq/planning/aeronaut/

CA Transportation Commission: Hwy/Passenger Rail/Transit

Improvements in CA - www.catc.ca.gov

California Road System (CRS) Maps

www.dot.ca.gov/hq/tsip/hseb/crs_maps/

California Transportation Plan (CTP)

www.dot.ca.gov/hq/tpp/californiatransportationplan2040/index.shtml

Caltrans Construction Contract Standards

www.dot.ca.gov/hq/esc/oe/standards.php

Caltrans Earth Web-based Transportation Database

www.dot.ca.gov/hq/tsip/gis/caltrans_earth/overview.php

Caltrans Improvement Project

<http://www.dot.ca.gov/CIP/>

Caltrans Local Offices

dot.ca.gov/localoffice.htm

Caltrans Performance Measurement System (PeMS)

Traffic data - pems.dot.ca.gov/

Caltrans Projects

www.dot.ca.gov/projects.htm

Caltrans Statewide Press Releases

www.dot.ca.gov/hq/paffairs/news/pressrel/

Contract Awards Services

dot.ca.gov/hq/esc/oe/contract_awards_services.html

Environmental Analysis

www.dot.ca.gov/hq/env

Live Traffic Cameras: State freeway roadside monitoring

video.dot.ca.gov

Local Assistance District Contacts

www.dot.ca.gov/hq/LocalPrograms/dlae.htm

Local Assistance Program Information

www.dot.ca.gov/hq/LocalPrograms/programInformation.htm

MAP-21 (Moving Ahead for Progress in the 21st Century)

Programming - dot.ca.gov/hq/transprog/map21.htm

Nat'l Hwy System - dot.ca.gov/hq/tsip/hseb/map21nhs.html

Mile Marker: A Caltrans Performance Report

dot.ca.gov/ctjournal/MileMarker/index.html

Public Mailing Lists - Send messages to members/subscribe

lists.dot.ca.gov/mailman/listinfo

QuickMap - Real-time Traffic Google Map

quickmap.dot.ca.gov

Standard Environmental Reference (SER)

Environmental document Procedures - www.dot.ca.gov/ser/

State Planning (CA Transp Plan, CA Interregional Blueprint)

www.dot.ca.gov/hq/tpp/offices/osp/index.html

Traffic Census-Traffic Volumes-Monthly Vehicle Miles of Travel

traffic-counts.dot.ca.gov

WorkZone Safety: "Slow for the Cone Zone" travel trips

www.dot.ca.gov/hq/maint/workzone/

Caltrans Improvement Project

www.dot.ca.gov/CIP/

Caltrans District Offices and District Directors

District 1 1656 Union St. Director:
Eureka, CA 95501 Charlie Fielder
(707) 445-6600
[www.dot.ca.gov/dist1/
district1.onramp.dot.ca.gov/](http://www.dot.ca.gov/dist1/district1.onramp.dot.ca.gov/) - internal

District 2 1657 Riverside Dr Acting Director:
Redding, CA 96001 Dave Moore
(530) 225-3426
[www.dot.ca.gov/dist2/
district2.onramp.dot.ca.gov/](http://www.dot.ca.gov/dist2/district2.onramp.dot.ca.gov/) - internal

District 3 703 B St Director:
Marysville, CA 95901 Amarjeet S. Benipal
(530) 741-4211
[www.dot.ca.gov/dist3/
northregion.dot.ca.gov/](http://www.dot.ca.gov/dist3/northregion.dot.ca.gov/) - N Region/Dist 3 internal

District 4 111 Grand Ave Director:
Oakland, CA 94612 Bijan Sartipi
(510) 286-4444
[www.dot.ca.gov/dist4/
d4web.dot.ca.gov/](http://www.dot.ca.gov/dist4/d4web.dot.ca.gov/) - internal

District 5 50 Higuera St Director:
San Luis Obispo, CA 93401 Timothy M. Gubbins
(805) 549-3111
[www.dot.ca.gov/dist05/
wwwd5.dot.ca.gov/](http://www.dot.ca.gov/dist05/wwwd5.dot.ca.gov/) - internal

District 6 1352 W. Olive Ave Director:
Fresno, CA 93728 Sharri Bender Ehler
(559) 488-2409
[www.dot.ca.gov/dist6/
d06web/](http://www.dot.ca.gov/dist6/d06web/) - internal

District 7 100 S. Main St., Ste. 100 Director:
Los Angeles, CA 90012 Carrie Bowen
(213) 897-3656
[www.dot.ca.gov/dist07/
t7www2/cmsms/](http://www.dot.ca.gov/dist07/t7www2/cmsms/) - internal

District 8 464 W. 4th St., 12th Floor Director:
San Bernardino, CA 92401 John Bulinski
(909) 383-4561
[www.dot.ca.gov/dist8/
district8.onramp.dot.ca.gov/](http://www.dot.ca.gov/dist8/district8.onramp.dot.ca.gov/) - internal

District 9 500 South Main St Director:
Bishop, CA 93514 Brent Green
(760) 872-0601
[www.dot.ca.gov/dist9/
d09web/](http://www.dot.ca.gov/dist9/d09web/) - internal

District 10 1976 E. Martin Luther King Jr. Blvd Director:
Stockton, CA 95205 Dennis T. Agar
(209) 948-7543
[www.dot.ca.gov/dist10/
district10.onramp.dot.ca.gov/](http://www.dot.ca.gov/dist10/district10.onramp.dot.ca.gov/) - internal

District 11 4050 Taylor St Director:
San Diego, CA 92110 Laurie Berman
(619) 688-6699
[www.dot.ca.gov/dist11/
onramp/dist11/main.php](http://www.dot.ca.gov/dist11/onramp/dist11/main.php) - internal

District 12 3337 Michelson Dr., Ste. 100 Director:
Irvine, CA 92612 Ryan Chamberlain
(949) 724-2000
[www.dot.ca.gov/dist12/
tcweb.dot.ca.gov/](http://www.dot.ca.gov/dist12/tcweb.dot.ca.gov/) - internal

